

UNITED STATES
DEPARTMENT OF THE INTERIOR
GEOLOGICAL SURVEY

APPLICATION FOR PERMIT TO DRILL, DEEPEN, OR PLUG BACK

1a. TYPE OF WORK

DRILL ☒

DEEPEN ☐

PLUG BACK ☐

b. TYPE OF WELL

OIL WELL ☒

GAS WELL ☐

OTHER

SINGLE ZONE

☒

MULTIPLE ZONE

☐

2. NAME OF OPERATOR

El Ran, Inc.

3. ADDRESS OF OPERATOR

1603 Broadway, Lubbock, Texas 79401

4. LOCATION OF WELL (Report location clearly and in accordance with any State requirements.)

At surface

1650 FSL & 2310 FWL

At proposed prod. zone

Same

14. DISTANCE IN MILES AND DIRECTION FROM NEAREST TOWN OR POST OFFICE*

Approximately 20.8 Miles south of Elida, New Mexico

15. DISTANCE FROM PROPOSED

LOCATION TO NEAREST PROPERTY OR LEASE LINE, FT. (Also to nearest drlg. unit line, if any)

310

16. NO. OF ACRES IN LEASE

280

17. NO. OF ACRES ASSIGNED TO THIS WELL

40

18. DISTANCE FROM PROPOSED LOCATION*

TO NEAREST WELL, DRILLING, COMPLETED, OR APPLIED FOR, ON THIS LEASE, FT.

970

19. PROPOSED DEPTH

4325

20. ROTARY OR CABLE TOOLS

Rotary

21. ELEVATIONS (Show whether DF, RT, GR, etc.)

4492.3 Gr.

27. APPROX. DATE WORK WILL START*

As soon as possible

23.

PROPOSED CASING AND CEMENTING PROGRAM

SIZE OF HOLE	SIZE OF CASING	WEIGHT PER FOOT	SETTING DEPTH	QUANTITY OF CEMENT
12 7/8	8 5/8	24#	1700'	Sufficient to circulate to surface
7 7/8	4 1/2	10.5	4325	175 sacks.

Mud Program - 10# Mud, 35 Viscosity, from 4000# to T.D.

BOP Program: See exhibits, C, D, & E

RECEIVED

APR 19 1979

U. S. GEOLOGICAL SURVEY
HOBBS, NEW MEXICO

IN ABOVE SPACE DESCRIBE PROPOSED PROGRAM: If proposal is to deepen or plug back, give data on present productive zone and proposed new productive zone. If proposal is to drill or deepen directionally, give pertinent data on subsurface locations and measured and true vertical depths. Give blowout preventer program, if any.

24.

SIGNED

Robert R. Ranck

TITLE

Vice-President

DATE

4-10-79

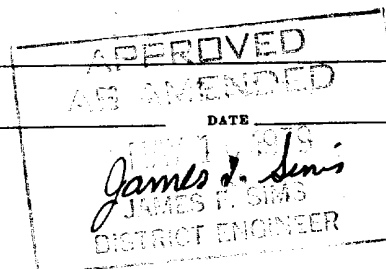
PERMIT NO.

APPROVAL DATE

APPROVED BY

TITLE

CONDITIONS OF APPROVAL, IF ANY:



*See Instructions On Reverse Side

**NEW MEXICO OIL CONSERVATION COMMISSION
WELL LOCATION AND ACREAGE DEDICATION PLAT**

Form No. 1
Supersedes O.C.C. 28
Effective 1-1-65

All distances must be from the outer boundaries of the Section

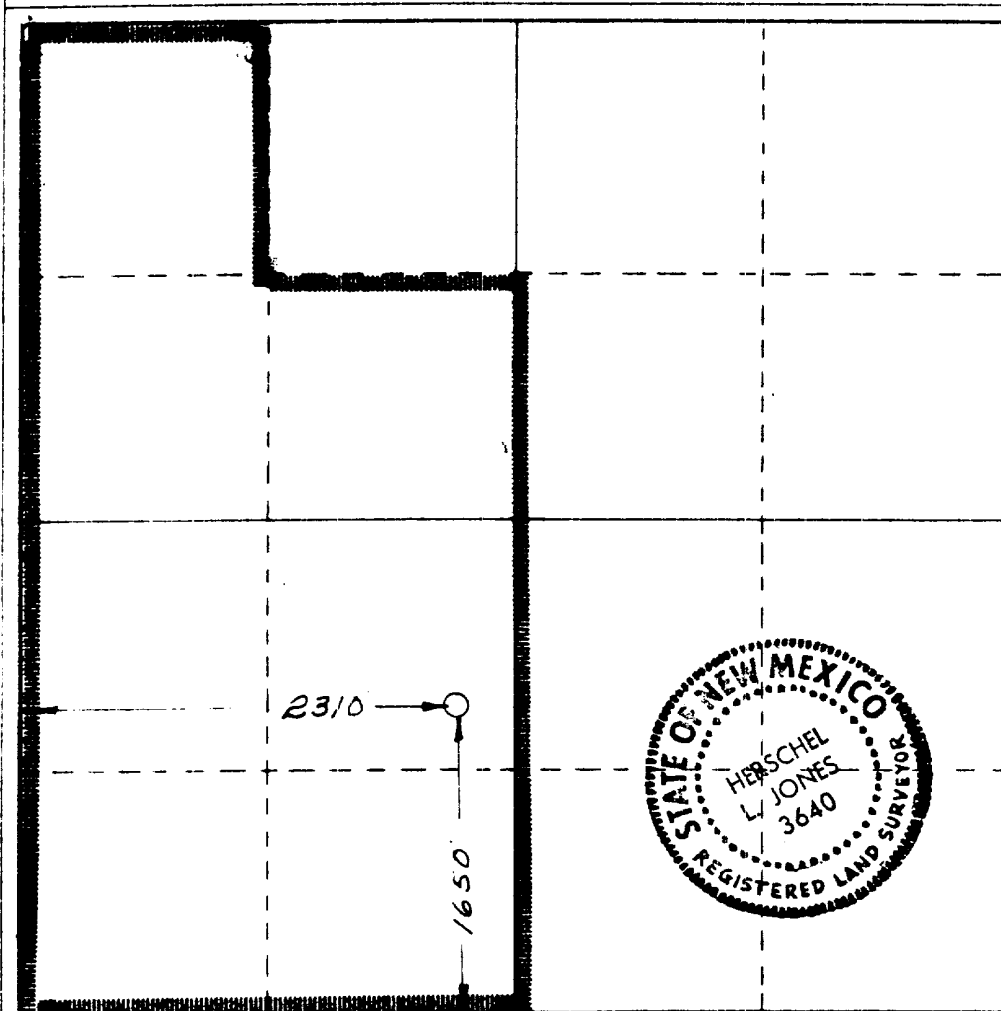
Lessor El Ran Inc.			Lessee U.S.			Well No. 2		
Section "K"	Section 34	Township 7 South	Range 32	County Roosevelt				
Actual Well Location of Wells: 1650 feet from the South line and 2310 feet from the West line								
Ground Level Elev 4492.3	Producing Formation San Andres		Pool Chaveroo (Undesignated)			Dedicated Acreage: 40 Acres		

1. Outline the acreage dedicated to the subject well by colored pencil or hachure marks on the plat below.
2. If more than one lease is dedicated to the well, outline each and identify the ownership thereof (both as to working interest and royalty).
3. If more than one lease of different ownership is dedicated to the well, have the interests of all owners been consolidated by communitization, unitization, force-pooling, etc?

☐ Yes ☐ No If answer is "yes," type of consolidation _____

If answer is "no," list the owners and tract descriptions which have actually been consolidated. (Use reverse side of this form if necessary.) _____

No allowable will be assigned to the well until all interests have been consolidated (by communitization, unitization, forced-pooling, or otherwise) or until a non-standard unit, eliminating such interests, has been approved by the Commission.



CERTIFICATION

I hereby certify that the information contained herein is true and complete to the best of my knowledge and belief

Robert K. Jones

Name
Vice-President
Position
El Ran, Inc.
Company

Date
April 10, 1979

I hereby certify that the well location shown on this plat was plotted from field notes of actual surveys made by me or under my supervision, and that the same is true and correct to the best of my knowledge and belief

Date Surveyed
April 5, 1979

Registered Professional Engineer
and/or Land Surveyor

Herschel L. Jones
Certificate No. **3640**

0 330 660 990 1320 1650 1980 2310 2640 2000 1800 1600 1400 1200 1000 800 0

APPLICATION FOR DRILLING

El Ran, Inc.
U.S. Well No. 2
Section 34-T7S-R32E
Roosevelt County, New Mexico

In conjunction with Form 9-331C, Application for Permit to Drill subject well, El Ran, Inc. submits the following ten items of pertinent information:

1. The geologic surface formation is the Ogallala formation.
2. The estimated tops of geologic markers are as follows:

Yates 2410'
San Andres 3458'

3. The depths at which anticipated water, oil or gas formations are expected to be encountered:
 Water: No data available. Probably from Triassic formation at approximately 500 to 600 feet.
 Oil or Gas: San Andres at approximately 3458 to 4325 feet.
4. Proposed casing program: See Form 9-331C.
5. Pressure control equipment: See Exhibits C, D, and E.
6. Mud program: See Form 9-331C.
7. Auxiliary equipment: See Exhibit D.
8. Testing, logging and coring programs: None.
9. No abnormal temperatures or pressures are anticipated.
10. Anticipated starting date: As soon as possible.
 Anticipated completion of drilling operations: Approximately 7 days after starting date.

MULTI-POINT SURFACE USE AND OPERATION PLAN

El Ran, Inc.
U.S. Well No. 2
1650' FSL and 2310 FWL
Section 34-T7S-R32E
Roosevelt County, New Mexico
(Development Well)

This plan is submitted with Form 9-331C, Application for Permit to Drill, covering the above described well. The purpose of this plan is to describe the location of the proposed well, the proposed construction activities and operations plan, the magnitude of necessary surface disturbance involved, and the procedures to be followed in rehabilitating the surface after completion of the operations, so that a complete appraisal can be made of the environmental effects associated with the operation.

1. EXISTING ROADS.

- A. Exhibit A is a portion of BLM quad-color map No. SE-9, showing the area surrounding the proposed wellsite on a scale of 1/2 inch to a mile. The proposed location is situated at a driving distance of approximately 20.8 miles (excluding the proposed new access road) south of Elida, New Mexico, and the existing roads leading to the wellsite are indicated in red in Exhibit A.
- (1) Proceed south from Elida on Highway 114 for approximately 0.6 miles. At this point, take the right fork onto Highway 440.
 - (2) Continue in a southward direction for an additional 19.8 miles (20.4 miles from Highway 70 in Elida). The road surface will change from blacktop to a dirt surface about 14.5 miles from Elida. You will pass over a number of cattleguards, including five cattleguards on the dirt road. Approximately 0.4 miles after crossing the fifth cattleguard, turn right (west).
 - (3) Approximately 0.1 miles after this turn, you will pass a tank battery and a caliche pit on your left. Approximately 0.1 miles beyond this point, a well (Byron 1Y) is located. Approximately 0.2 miles beyond this well, you will reach the well pad of Byron #2. Approximately 0.3 miles beyond this well you will reach the pad for U.S. #1. Turn north at this point and you will reach the drilling pad for U.S. #2.

2. PLANNED ACCESS ROAD.

- A. The proposed new access road will be constructed in a South to North direction, from the southeastern corner of the drill pad at U.S. #1, to the southeastern corner of the drill pad at the proposed location.
- B. The route of the proposed road passes over a relatively level area and only very minor leveling will be required.
- C. The length of the proposed road will be approximately 800 feet. It will have a driving surface width of 12 feet and the surface will be topped with six inches of compacted caliche. The center of the road will be crowned, with drainage on both sides.

- D. No turnouts will be required, and no fences, cattlequards, or culverts are involved.
- E. The starting point of the new road is clearly marked with surveyor's ribbons, and the route of the road is staked and flagged.
- F. The route is on fee surface owned by the New Mexico State Department of Game and Fish. An application has been submitted to the New Mexico State Department of Game and Fish for use of that department's surface, both as part of the access route and as a drillsite.

3. LOCATION OF EXISTING WELLS.

- A. As indicated in Exhibit B, there has been considerable drilling activity in the area of the proposed well. The nearest producing well is Byron #3, located 1/4 miles east of the proposed well. There is currently a well on this lease 990' south of proposed U.S. Well #2.

4. LOCATION OF EXISTING AND/OR PROPOSED FACILITIES.

- A. There are no production facilities on this lease at the present time.
- B. In the event that the well is productive of oil, a tank battery and heater will be installed on the well pad. Electric power for production is available from an east-west high line about 1200 feet south of the proposed location.

5. LOCATION AND TYPE OF WATER SUPPLY.

- A. It is planned to drill the proposed well with a fresh water system. The water will be obtained from privately owned or commercial sources and will be hauled to the location by truck over the existing and proposed roads described in Paragraphs 1 and 2, above.

6. SOURCE OF CONSTRUCTION MATERIALS.

- A. Caliche required for road and drilling pad surfaces will be obtained from a privately owned pit approximately 2/3 of a mile east of the proposed drillsite. This is the caliche pit referred to, in paragraph 1A (3), above.

7. METHODS OF HANDLING WASTE DISPOSAL.

- A. Drill cuttings will be disposed of, in the reserve pits.
- B. Drilling fluids will be allowed to evaporate in the reserve pits until the pits are dry.
- C. All pits will be fenced with normal fencing material to prevent the entry of livestock into the pits.

- D. Water produced during operations will be collected in tanks until hauled to an approved disposal system, or a separate disposal application will be submitted to the USGS for approval.
- E. Oil produced during operations will be stored in tanks until sold.
- F. Current laws and regulations pertaining to the disposal of human waste will be complied with.
- G. Trash, waste paper, garbage and junk will be buried in a separate pit and covered with a minimum of 24 inches of dirt. All waste materials will be contained to prevent scattering by the wind.
- H. All trash and debris will be buried or removed from the wellsite within 90 days after drilling and/or completion operations have been finished.

8. ANCILLARY FACILITIES.

- A. None required.

9. WELLSITE LAYOUT.

- A. Exhibit C shows the relative location and dimensions of the well pad and reserve pits.
- B. The ground surface at the wellsite is comparatively flat, and very little cut or fill will be required to construct either the drilling pad or the reserve pits. The drilling surface will be covered with six inches of compacted caliche.
- C. The pad and pit area has been staked and flagged.

10. PLANS FOR RESTORATION OF THE SURFACE.

- A. After drilling and/or completion operations have been finished, all equipment and other material not needed for further operations will be removed. Pits will be filled and the location cleaned of all trash and junk, so as to leave the wellsite in as aesthetically pleasing a condition as possible.
- B. Any unguarded pits containing fluids will be fenced until they have been filled.
- C. If the proposed well is non-productive, all applicable rehabilitation and/or vegetation requirements of the BLM, the USGS, and the New Mexico State Department of Game and Fish will be complied with, and will be accomplished as expeditiously as possible. All pits will be filled and leveled within 90 days after abandonment.

11. OTHER INFORMATION.

- A. The proposed wellsite is located in an essentially level area. The proposed new access road crosses a generally level area, also, with only minor surface anomalies.
- B. The topsoil at the wellsite consists of moderately soft sand.
- C. Flora and Fauna: The vegetation cover at the proposed location is moderately sparse, consisting of miscellaneous weeds and grass, bear grass yucca, and a few cactus plants. No wildlife was observed, but it is likely that typical semi-arid desert wildlife inhabit the area, which is used for cattle grazing.
- D. There are no ponds, lakes, or flowing streams or rivers in the vicinity of the wellsite.
- E. There are no occupied dwellings within several miles of the wellsite. The nearest windmill is about a half-mile east of the location.
- F. The wellsite is on surface owned by the New Mexico State Department of Game and Fish, with federal ownership of minerals.
- G. There is no evidence of any significant archaeological, historical or cultural sites in the area of the proposed location. An archaeological survey has been conducted by the Agency for Conservation Archaeology, Eastern New Mexico University, Portales, New Mexico, and their report has been distributed to the appropriate government agencies.

12. OPERATOR'S REPRESENTATIVES.

- A. The field representatives of the operator responsible for assuring compliance with the approved surface use plan are:

W. W. Ranck
El Ran, Inc.
1603 Broadway
Lubbock, Texas 79401
Telephone: 806 763-4091

Robert R. Ranck
El Ran, Inc.
1603 Broadway
Lubbock, Texas 79401
Telephone: 806 763-4091

13. CERTIFICATION.

See attachment on next page.

CERTIFICATION

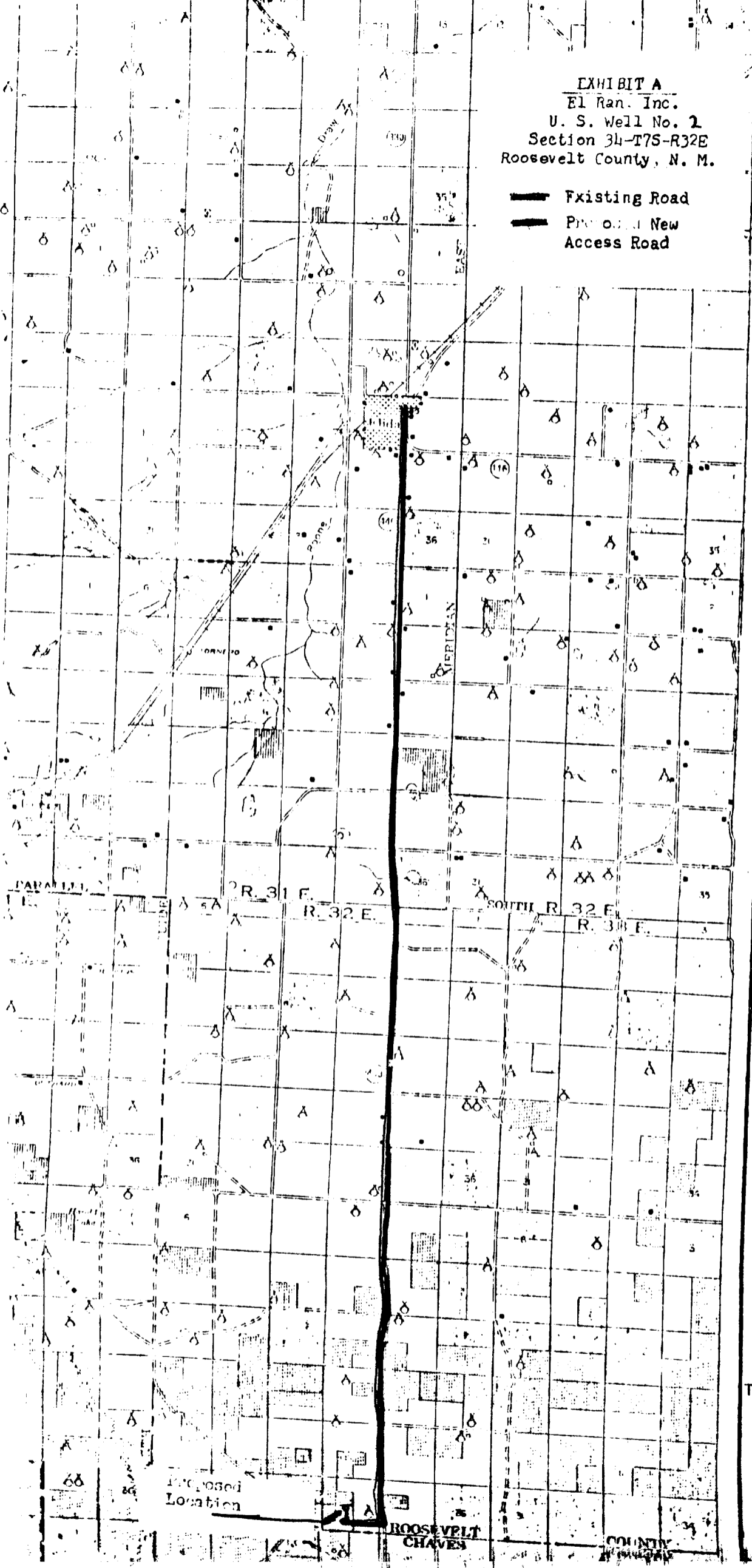
I hereby certify that I, or persons under my direct supervision, have inspected the proposed drillsite and access route; that I am familiar with the conditions which presently exist; that the statements made in this plan are to the best of my knowledge true and correct; and that the work associated with the operations proposed herein will be performed by El Ran, Inc. and its contractors and subcontractors in conformity with this plan and the terms and conditions under which it is approved.

4-11-79
Date

Robert R. Ranck
Robert R. Ranck
Vice-President of El Ran, Inc.

EXHIBIT A
 El Ran. Inc.
 U. S. Well No. 2
 Section 34-T7S-R32E
 Roosevelt County, N. M.

— Existing Road
 — Proposed New Access Road



T. 3 S.

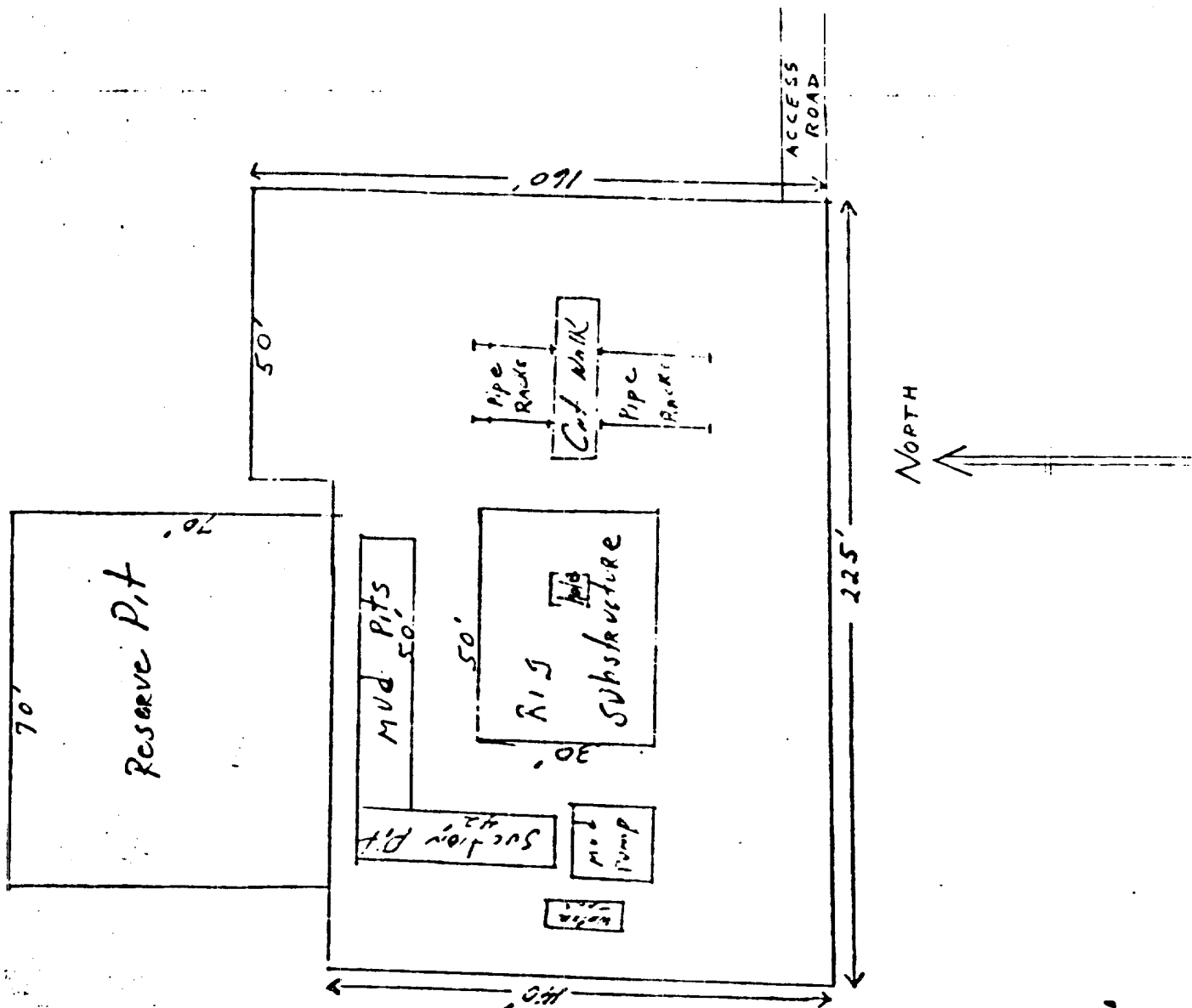
T. 4 S.

T. 5 S.

T. 6 S.

T. 7 S.

EXHIBIT C
 El Ran, Inc.
 U.S. Well No. 2
 1650' FSL and 2310' FWL
 Roosevelt County, New Mexico



This rig is equipped with a Shaffer LWS
 Series 900 Double 90P Hydraulic operated.
 With blanks, 4", 4½" and side connections.

All equipment should be at least 3,000 psi WP or higher unless otherwise specified.

- . Bell nipple.
- . Hydril bag type preventer
- . Ram type pressure operated blowout preventer with blind rams.
- . Flanged spool with one 3-inch and one 2-inch (minimum) outlet.
- . 2-inch (minimum) flanged plug or gate valve.
- . 2-inch by 2-inch by 2-inch (minimum) flanged tee.
- . 3-inch gate valve.
- . Ram type pressure operated blowout preventer with pipe rams.
- . Flanged type casing head with one side outlet.
- . 2-inch threaded (or flanged) plug or gate valve.
- . Flanged on 5000# WP, threaded on 3000# WP or less.
- . 3-inch flanged spacer spool.
- . 3-inch by 2-inch by 2-inch by 2-inch flanged cross.
- . 2-inch flanged plug or gate valve.
- . 2-inch flanged adjustable choke.
- . 2-inch threaded flange.
- . 2-inch XXH nipple.
- . 2-inch forged steel 90° Ell.
- . Cameron (or equal.) threaded pressure gage.
- . Threaded flange.
- . 2-inch flanged tee.
- . 2-inch flanged plug or gate valve.
- . 2 1/2-inch pipe, 300' to pit, anchored.
- . 2 1/2-inch SE valve.
- . 2 1/2-inch line to steel pit or separator.

NOTES:

- . Items 3, 4 and 8 may be replaced with double ram type preventer with side outlets between the rams.
- . The two valves next to the stack on the fill and kill line to be closed unless drill string is being pulled.
- . Kill line is for emergency use only. This connection shall not be used for filling.
- . Replacement pipe rams and blind rams shall be on location at all times.
- . Only type U, LSW and QHC ram type preventers with secondary seals are acceptable for 5000 psi WP and higher BOP stacks.
- . Type E ram-type BOP's with factory modified side outlets may be used on 3000 psi or lower WP BOP stacks.

EXHIBIT D

El Ran, Inc.

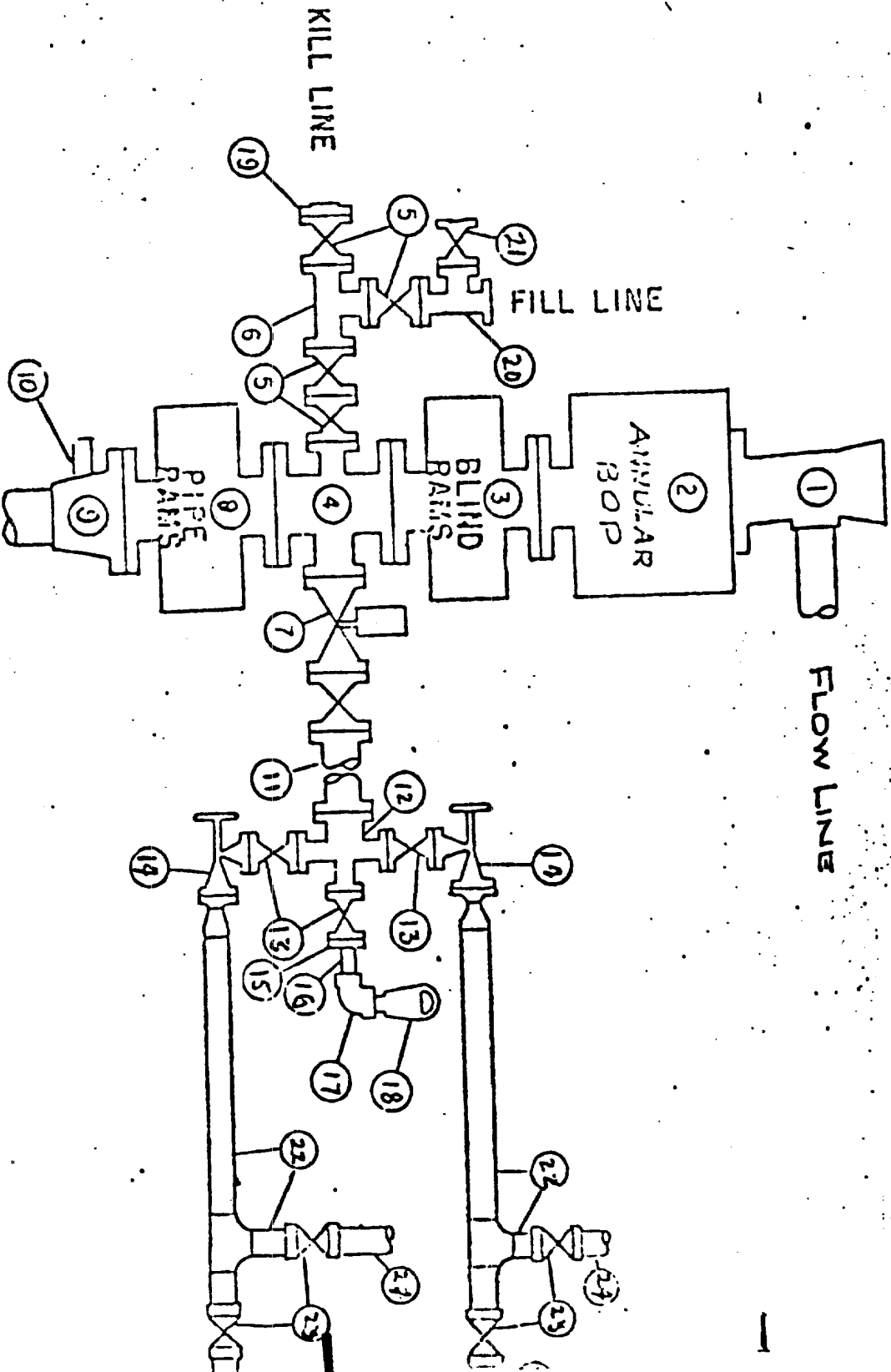
U.S. Well No. 2

Section 34-T7S-R32E

Roosevelt County, New Mexico

WEK DRILLING CO., INC. - R19 3 **BLOWOUT PREVENTER SPECIFICATION**

EXHIBIT E
 F1 Ran, Inc.
 U.S. Well No. 2
 Section 34-T7S-R32E
 Roosevelt County, New Mexico



10/12/74