

30-041-20588

STATE OF NEW MEXICO  
ENERGY AND MINERALS DEPARTMENT

CONSERVATION DIVISION  
P. O. BOX 2088  
SANTA FE, NEW MEXICO 87501

Form C-101  
Revised 10-1-78

|                        |  |
|------------------------|--|
| NO. OF COPIES RECEIVED |  |
| DISTRIBUTION           |  |
| SANTA FE               |  |
| FILE                   |  |
| U.S.G.S.               |  |
| LAND OFFICE            |  |
| OPERATOR               |  |

5A. Indicate Type of Lease  
STATE ☐ FEDERAL ☒  
5. State Oil & Gas Lease No.

APPLICATION FOR PERMIT TO DRILL, DEEPEN, OR PLUG BACK

1a. Type of Work  
b. Type of Well  
OIL WELL ☒ GAS WELL ☐ OTHER ☐  
DRILL ☒ DEEPEN ☐ PLUG BACK ☐  
SINGLE ZONE ☐ MULTIPLE ZONE ☐

7. Unit Agreement Name

2. Name of Operator  
HARPER OIL CO.

8. Form or Lease Name  
KRAUSE

3. Address of Operator  
2651 PARKWAY PLAZA SUITE "F" ODESSA, TX 79761

9. Well No.  
1

4. Location of Well  
UNIT LETTER B-1 LOCATED 660 FEET FROM THE East LINE

10. Field and Pool or Wildcat  
UNDESIGNATED

AND 1980 FEET FROM THE South LINE OF SEC. 15 TWP. 8S RGE. 34E NMPM

12. County  
Roosevelt

|  |   |                                    |   |                              |
|--|---|------------------------------------|---|------------------------------|
| 11. Elevations (Show whether DT, RT, etc.) | 21A. Kind & Status Plug. Bond<br>50,000 | 19. Proposed Depth<br>9400         | 19A. Formation<br>PENNSYLVANIAN             | 20. Rotary or C.T.<br>ROTARY |
|  |   | 21B. Drilling Contractor<br>WARTON | 22. Approx. Date Work will start<br>4-25-81 |                              |

PROPOSED CASING AND CEMENT PROGRAM

| SIZE OF HOLE | SIZE OF CASING | WEIGHT PER FOOT | SETTING DEPTH | SACKS OF CEMENT | EST. TOP |
|--------------|----------------|-----------------|---------------|-----------------|----------|
| 17 1/2       | 13 3/8         | 52-54#          | 350           | 375 SKS         | SURFACE  |
| 12 1/4       | 8 5/8          | 24-28#          | 3900          | 2100 SKS        | SURFACE  |
| 7 7/8        | 5 1/2          | 17#             | 9400          | 475 SKS         | 9400     |

The following BOP equipment will be used

- 1. 5000# WP Double Ram preventer
- 2. 3000# WP Annular Preventer
- 3. 4" x 2" - 500# WP Choke Manifold
- 4. Koomey accumulator and valves w/remote stand.

APPROVAL VALID FOR 180 DAYS  
PERMIT EXPIRES 9/23/81  
WELL DRILLING UNDERWAY

IN ABOVE SPACE DESCRIBE PROPOSED PROGRAM; IF PROPOSAL IS TO DEEPEN OR PLUG BACK, GIVE DATA ON PRESENT PRODUCTIVE ZONE AND PROPOSED NEW PRODUCTIVE ZONE. GIVE BLOWOUT PREVENTER PROGRAM, IF ANY.

I hereby certify that the information above is true and complete to the best of my knowledge and belief.

Signed Chyle C. Henry Title Drilling Manager Date 3/23/81

(This space for State Use)

APPROVED BY [Signature] TITLE MANAGER OF DISTRICT DATE 1981

CONDITIONS OF APPROVAL, IF ANY

**NEW MEXICO OIL CONSERVATION COMMISSION  
WELL LOCATION AND ACREAGE DEDICATION PLAT**

Form C-102  
Supersedes C-128  
Effective 1-1-65

All distances must be from the outer boundaries of the Section.

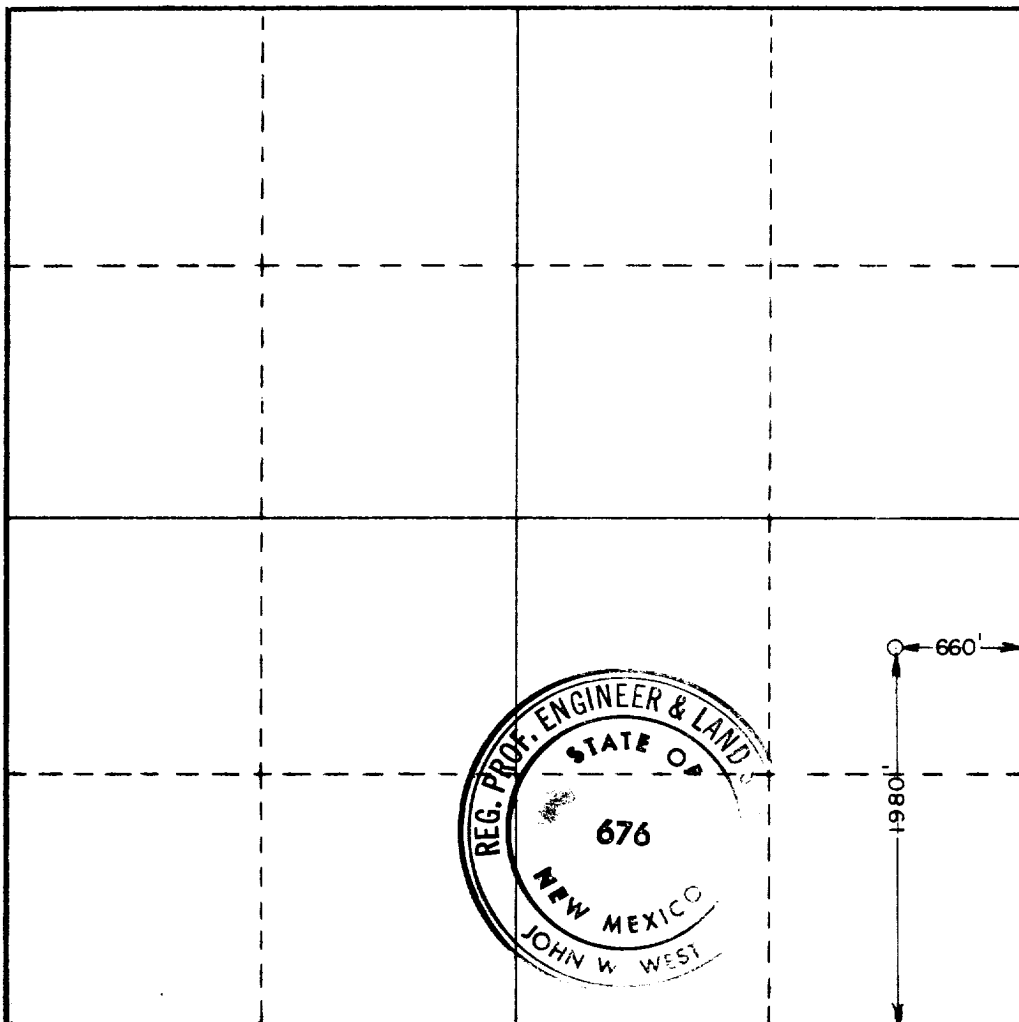
|   |                      |                            |                             |                                       |                      |
|---|----------------------|----------------------------|-----------------------------|---------------------------------------|----------------------|
| Operator<br><b>Harper Oil Company</b>   |                      |                            | Lease<br><b>Krause</b>      |                                       | Well No.<br><b>1</b> |
| Unit Letter<br><b>I</b>   | Section<br><b>15</b> | Township<br><b>8 South</b> | Range<br><b>34 East</b>     | County<br><b>Roosevelt</b>            |                      |
| Actual Footage Location of Well:<br><b>1980</b> feet from the <b>South</b> line and <b>660</b> feet from the <b>East</b> line |                      |                            |                             |                                       |                      |
| Ground Level Elev.<br><b>4269.7</b>   | Producing Formation  |                            | Pool<br><b>UNDESIGNATED</b> | Dedicated Acreage:<br><b>40</b> Acres |                      |

1. Outline the acreage dedicated to the subject well by colored pencil or hachure marks on the plat below.
2. If more than one lease is dedicated to the well, outline each and identify the ownership thereof (both as to working interest and royalty).
3. If more than one lease of different ownership is dedicated to the well, have the interests of all owners been consolidated by communitization, unitization, force-pooling, etc?

☐ Yes    ☐ No    If answer is "yes," type of consolidation \_\_\_\_\_

If answer is "no," list the owners and tract descriptions which have actually been consolidated. (Use reverse side of this form if necessary.) \_\_\_\_\_

No allowable will be assigned to the well until all interests have been consolidated (by communitization, unitization, forced-pooling, or otherwise) or until a non-standard unit, eliminating such interests, has been approved by the Commission.



**CERTIFICATION**

I hereby certify that the information contained herein is true and complete to the best of my knowledge and belief.

Name Charles R. Klevary  
 Position Harper Oil Co. Operation Mgr.  
 Company 3-23-81  
 Date

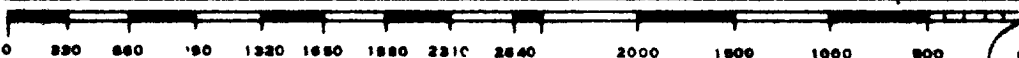
I hereby certify that the well location shown on this plat was plotted from field notes of actual surveys made by me or under my supervision, and that the same is true and correct to the best of my knowledge and belief.

Date Surveyed  
**3-18-81**

Registered Professional Engineer and/or Land Surveyor

John W. West

Certificate No. **JOHN W. WEST 676**  
**PATRICK A. HANCOCK 6888**  
**RONALD J. EIDSON 3239**



SECRETED

522 23 1537

SECRETED

FILE