

Phone
(806) 637-3678

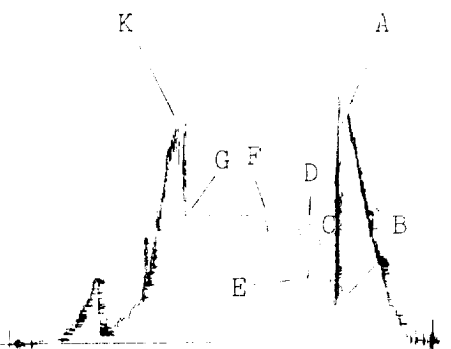
Harvill's Drill Stem Testing

P.O. Box 725
Brownfield, Texas 79316

Contractor	Norton Drlg.	Surface Choke	1/8"	Mud Type	Salt/Gel/Starch
Rig No.	5	Bottom Choke	5/8"	Weight	10.2
Spot	330' FSL & 1980' FWL	Hole Size	7 7/8"	Viscosity	47
Sec.	17	Rat Hole Size	--	Water Loss	12.0
Twp.	7 S	DP Size & Weight	4 1/2" 16.60	Filter Cake	2/32
Rng.	34 E	Wt. Pipe	--	Resistivity	-- @ -- °F
Field	Wildcat	I.D. of DC	2 1/2"		155,000 Ppm. NaCl
County	Roosevelt	Length of DC	675'	Bottom	
State	New Mexico	Total Depth	4216'	Hole Temp.	109° F
Elevation	4330' KB	Type of Test	Conventional		

Opened Tool @ 18:02 hrs.
Flow No. 1 15 13* min.
Shut-in No. 1 30 28* min.
Flow No. 2 60 60* min.
Shut-in No. 2 120 125* min.
Flow No. 3 None Taken min.
Shut-in No. 3 " " min.
*Corrected

Recorder Type Kuster AK-1
No. 13545 Cap. 8100 psi
Depth 4208 feet
Inside Outside X



Initial Hydrostatic	A	2325
Final Hydrostatic	K	2297
Initial Flow	B	398
Final Initial Flow	C	521
Initial Shut-in	D	1249
Second Initial Flow	E	678
Second Final Flow	F	1332
Second Shut-in	G	1352
Third Initial Flow	H	--
Third Final Flow	I	--
Third Shut-in	J	--

Pipe Recovery

390' Total fluid = 2.38 bbl.
90' Drilling fluid = 0.55 bbl.
300' Highly gas cut oil & mud = 1.83 bbl.
Top sample - 160,000 ppm. NaCl.

Co. Rep. Malvin Teague
Tester Eugene Harvill

Surface blow:

1st flow:

Tool opened with a fair blow 11" underwater and remained through flow period.

2nd flow:

Tool opened with a weak blow 3" underwater and remained through flow period.

Remarks:

Tool slid 10 feet at the beginning of the test. The character of the flow pressure curves indicate the probability of plugging occurring during the final flow period.

Operator NRM Petroleum Corp.
Address 600 W. Illinois, Suite 1000
Midland, Texas 79701
Well Name & No. Archer #1
Formation San Andres
Test Interval 4156' - 4216'
DST No. 1
Ticket No. 53
Date 11/9/82