

NEW MEXICO OIL CONSERVATION COMMISSION
WELL LOCATION AND ACREAGE DEDICATION PLAT

Form C-102
Supersedes C-128
Effective 1-1-65

All distances must be from the outer boundaries of the Section

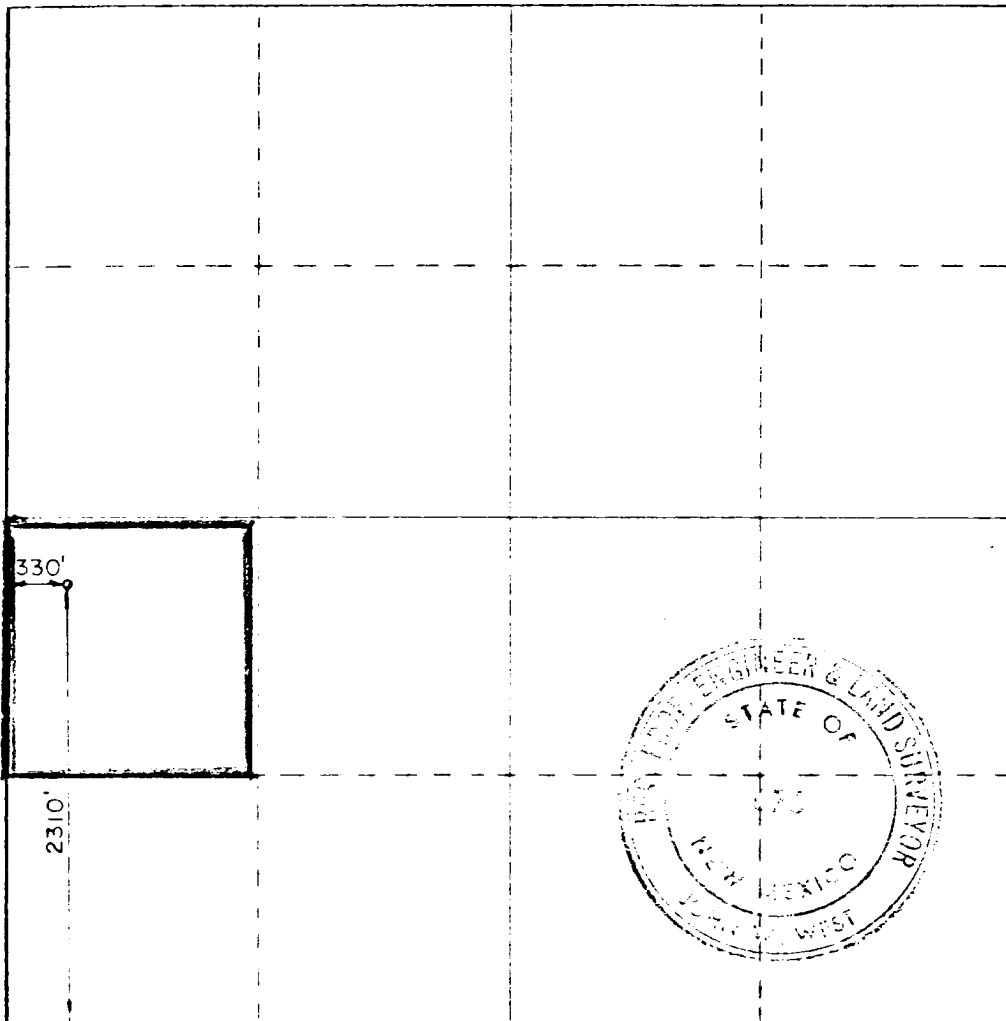
LE MAY ENERGY CORP			CELSIUS		Well No. 1
Section	Range	Township	Range	County	
L	10	8 S	36 E	ROOSEVELT	
A 1/4 Sec. 10, T8S, R36E, Co. Roosevelt					
2310'		feet from the SOUTH line and		330' feet from the WEST line	
Ground Level Elev.	Producing Formation		Well	Estimated Acreage	
4096.4	SAN ANTONIO		WILDCAT	40 Acres	

1. Outline the acreage dedicated to the subject well by colored pencil or hatchure marks on the plat below.
2. If more than one lease is dedicated to the well, outline each and identify the ownership thereof (both as to working interest and royalty).
3. If more than one lease of different ownership is dedicated to the well, have the interests of all owners been consolidated by communitization, unitization, force-pooling, etc?

☐ Yes ☐ No If answer is "yes," type of consolidation _____

If answer is "no," list the owners and tract descriptions which have actually been consolidated. (Use reverse side of this form if necessary.) _____

No allowable will be assigned to the well until all interests have been consolidated (by communitization, unitization, forced-pooling, or otherwise) or until a non-standard unit, eliminating such interests, has been approved by the Commission.



CERTIFICATION

I hereby certify that the information contained herein is true and complete to the best of my knowledge and belief.

William J. Lema
Name: _____
President

Position: _____
LE MAY ENERGY CORP.

Company: _____
Date: 9/2/82

Date: _____

I hereby certify that the well location shown on this plat was plotted from field notes of actual surveys made by me or under my supervision, and that the same is true and correct to the best of my knowledge and belief.

Date Surveyed: _____
AUGUST 18, 1982

Registered Professional Engineer and or Land Surveyor

John M. West
Certificate No. JOHN M. WEST 876
PATRICK A. ROMERO 6668
Ronald J. Eidson 3239

0 330 660 990 1320 1650 1980 2310 2640 2970 3300 3630 3960 4290 4620 4950 5280 5610 5940 6270 6600