



NEW MEXICO ENERGY, MINERALS and NATURAL RESOURCES DEPARTMENT

GARY E. JOHNSON
Governor
Jennifer A. Salisbury
Cabinet Secretary

Lori Wrotenbery
Director
Oil Conservation Division

September 14, 2000

Saga Petroleum LLC
415 W Wall, Suite 1900
Midland, TX 79701

RE: Intents to Plug & Abandon Wells

Gentlemen:

Oil Conservation Division request that you correct the information for each of the wells listed and put this information on the State form C-103. Please see the attached pages and the highlighted information that needs correcting.

Todd Lower SA Unit	#2-B, 31-07s-36e	API #30-041-20032
Todd Lower SA Unit	#8-H, 31-07s-36e	API #30-041-20273
Todd Lower SA Unit	#10-J, 31-07s-36e	API #30-041-20065
Todd Lower SA Unit	#15-O, 30-07s-36e	API #30-041-20682
Todd Lower SA Unit	#5-E, 31-07s-36e	API #30-041-10145
Todd Lower SA Unit	#9-I, 21-07s-36e	API #30-041-20078
Todd Lower SA Unit	#15-O, 19-07s-36e	API #30-041-20034
Todd Lower SA Unit	#3-C, 31-07s-36e	API #30-041-10097
Todd Lower SA Unit	#10-J, 30-07s-36e	API #30-041-10671
Todd Lower SA Unit	#7-G, 31-07s-36e	API #30-041-20326
Todd Lower SA Unit	#11-K, 31-07s-36e	API #30-041-20123
Todd Lower SA Unit	#2-B, 30-07s-36e	API #30-041-20006
Todd Lower SA Unit	#1-A, 31-07s-36e	API #30-041-20047

The Commission must be notified 24 hours prior to the beginning of plugging operations on all State and Fee wells for the C-103 to be approved.

If you have any questions on this matter, please call District I (505) 393-6161 for Gary Wink (ext.114) or Donna Pitzer (ext.115).

Yours truly,

OIL CONSERVATION DIVISION

Gary Wink
District I, Field Rep II

GW:dp

Cc: well file

Oil Conservation Division * 1625 French Drive * Hobbs, New Mexico 88240
Phone: (505) 393-6161 * Fax (505) 393-0720 * <http://www.emnrd.state.nm.us>

Job separation sheet

OPERATOR'S COPY

Form 3160-5
(June 1990)

UNITED STATES DEPARTMENT OF THE INTERIOR BUREAU OF LAND MANAGEMENT

FORM APPROVED
Budget Bureau No. 1004-0135
Expires: March 31, 1993

SUNDRY NOTICES AND REPORTS ON WELLS

Do not use this form for proposals to drill or to deepen or reentry to a different reservoir.
Use "APPLICATION FOR PERMIT-" for such proposals

SUBMIT IN TRIPLICATE

1. Type of Well

☐ Oil Well ☐ Gas Well ☒ Other WIW

2. Name of Operator

Saga Petroleum

3. Address and Telephone No.

415 W. Wall, Suite 1900, Midland, TX. 79701

4. Location of Well (Footage, Sec., T., R., M., or Survey Description)

1980 FEL, 660 FSL Sec. 30, T 7S, R 36E

5. Lease Designation and Serial No.

6. If Indian, Allottee or Tribe Name

7. If Unit or CA, Agreement Designation

Todd Lower S A Unit Sec. 31

8. Well Name and No.

Todd 3015 #15

9. API Well No.

30-041-20682

10. Field and Pool, or Exploratory Area

Todd Lower San Andres

11. County or Parish, State

Roosevelt

12. CHECK APPROPRIATE BOX(s) TO INDICATE NATURE OF NOTICE, REPORT, OR OTHER DATA

TYPE OF SUBMISSION

- ☒ Notice of Intent
☐ Subsequent Report
☐ Final Abandonment Notice

TYPE OF ACTION

- ☒ Abandonment
☐ Recompletion
☐ Plugging Back
☐ Casing Repair
☐ Altering Casing
☐ Other

- ☐ Change of Plans
☐ New Construction
☐ Non-Routine Fracturing
☐ Water Shut-Off
☐ Conversion to Injection
☐ Dispose Water

(Note: Report results of multiple completion on Well Completion or Recompletion Report and Log form.)

13. Describe Proposed or Completed Operations (Clearly state all pertinent details, and give pertinent dates, including estimated date of starting any proposed work. If well is directionally drilled, give subsurface locations and measured and true vertical depths for all markers and zones pertinent to this work.)*

1. Set CIBP @ 4200. Dump 20' cement on top. (perfs 4250 to 4290) TAG
2. 100 ft. plug @ 2035 - 1935.
3. Spot 100 ft. plug @ 8 5/8 shoe (50 in 50 out) Bottom of shoe @ 331'. Tag
4. Surface plug install dry hoe marker.

14. I hereby certify that the foregoing is true and correct

Signed

[Signature]

Title Agent

Date 08/16/00

(This space for Federal or State office use)

Approved by

Conditions of approval, if any:

Title

Date

Title 18 U.S.C. Section 1001, makes it a crime for any person knowingly and willfully to make to any department or agency of the United States any false, fictitious or fraudulent statements or representations as to any matter within its jurisdiction.

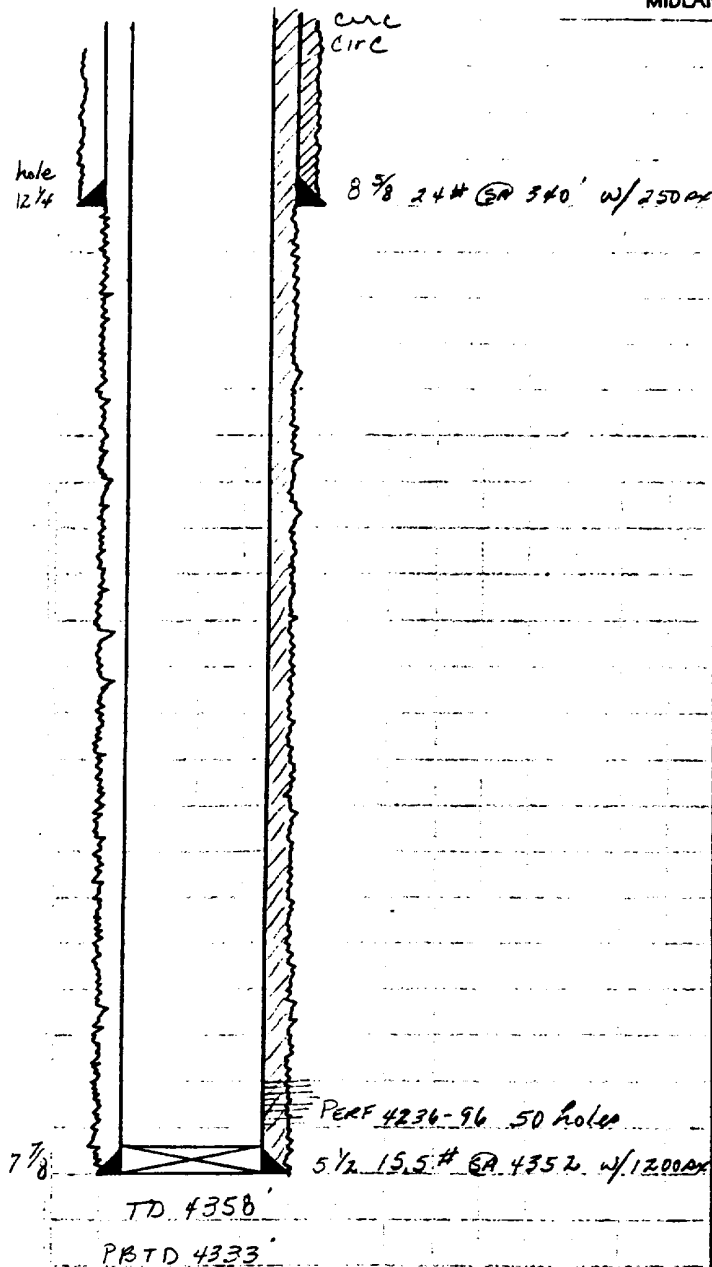
*See Instruction on Reverse Side

RECEIVED
AUG 31 2000
BLM
ROSWELL, NM

LEASE & WELL NO. TODD 30/5
FIELD TODD Lower San Andres

PLAINS PETROLEUM
415 W. Wall, Suite 2110
MIDLAND, TEXAS 79701

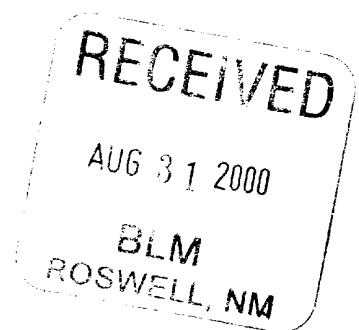
1980 FEL, 660 FSL SEC 30
LOCATION T7S R36E Roosevelt Co
ELEV. KB GL 414 BY SPD DATE 2/24/90



Well History

- 10-17-84 convert to WIW
- 9-19-87 convert back to Producer TEST 12-87
0B0X549BW
- 5-17-88 convert back to WIW
- 9-7-88 TA - pulled all equipment

Completion: 12-29-83 Perfs 4236-96 50 holes
ACID FRAC w/10,000 gal 28% HCl &
12,000 # sand.
IP 23B0X60 BWX30MCFD



RECEIVED

AUG 31 2000

BLM
ROSWELL, NM