

OIL CONSERVATION DIVISION

P. O. BOX 2084

SANTA FE, NEW MEXICO 87501

Form C-102
Revised 10-1-78STATE OF NEW MEXICO
ENERGY AND MINERALS DEPARTMENT

All distances must be from the outer boundaries of the Section.

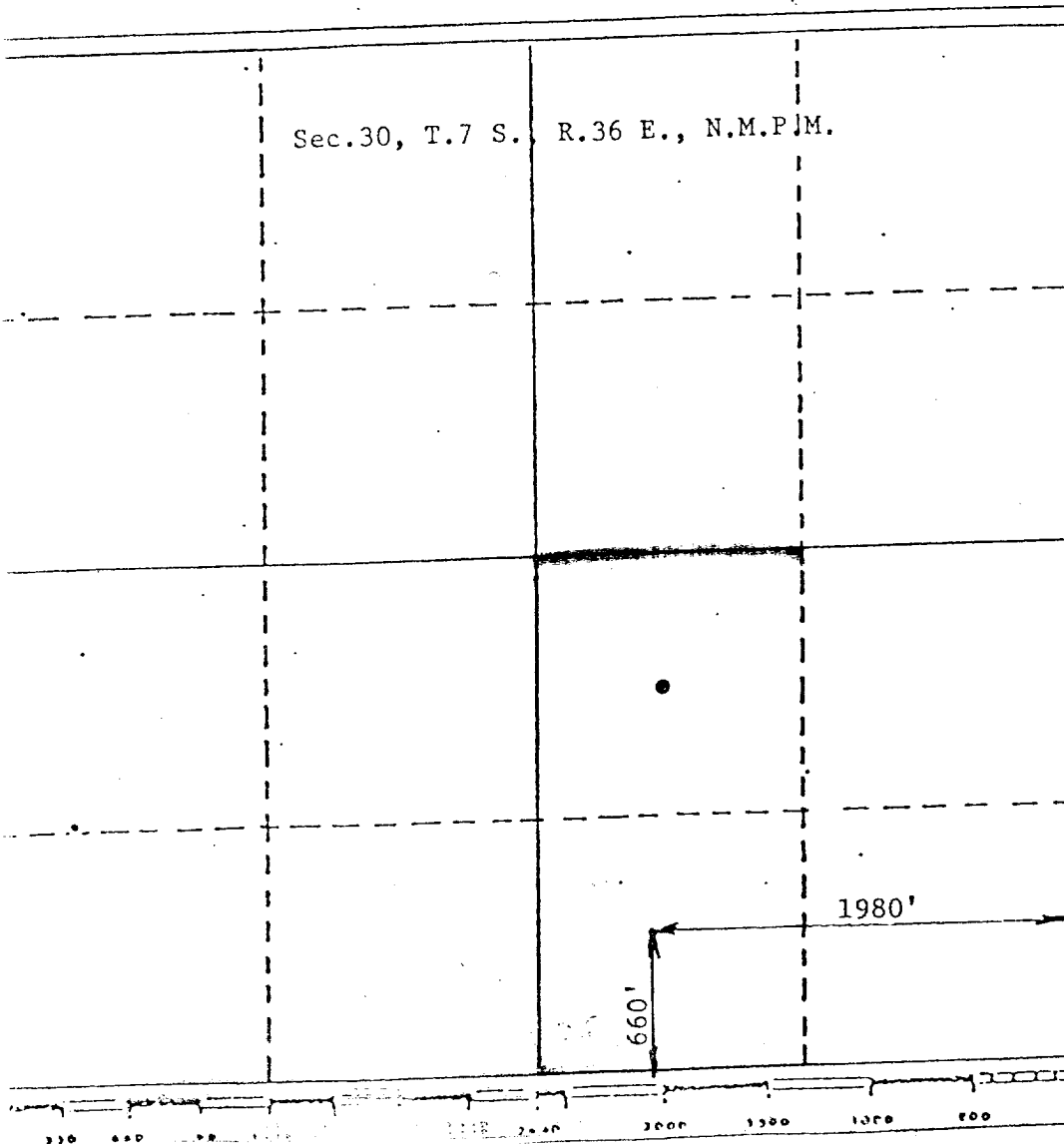
Operator Murphy Operating Corp.		Lease TLSAU 30		Well No. 15
Section 0	Section 30	Township 7 South	Range 36 East	County Roosevelt
Nearest Postage Location of Well: 1980 feet from the East line and 660 feet from the South line				
Land Level Elev. 4144	Producing Formation Slaughter	Pool Todd Lower San Andres	Dedicated Acreage: 80 Acres	

1. Outline the acreage dedicated to the subject well by colored pencil or hatchure marks on the plat below.
2. If more than one lease is dedicated to the well, outline each and identify the ownership thereof (both as to working interest and royalty).
3. If more than one lease of different ownership is dedicated to the well, have the interests of all owners been consolidated by communitization, unitization, force-pooling, etc?

☐ Yes ☐ No If answer is "yes," type of consolidation _____

If answer is "no," list the owners and tract descriptions which have actually been consolidated. (Use reverse side of this form if necessary.) _____

No allowable will be assigned to the well until all interests have been consolidated (by communitization, unitization, forced-pooling, or otherwise) or until a non-standard unit, eliminating such interests, has been approved by the Division.



CERTIFICATION

I hereby certify that the information contained herein is true and complete to the best of my knowledge and belief.

Name

James A. Knauf

Position

Agent

Company

MURPHY OPERATING CORPORATION

Date

August 23, 1983

I hereby certify that the well location shown on this plat was plotted from field notes of actual surveys made by me or under my supervision, and that the same is true and correct to the best of my knowledge and belief.

Date Subscribed

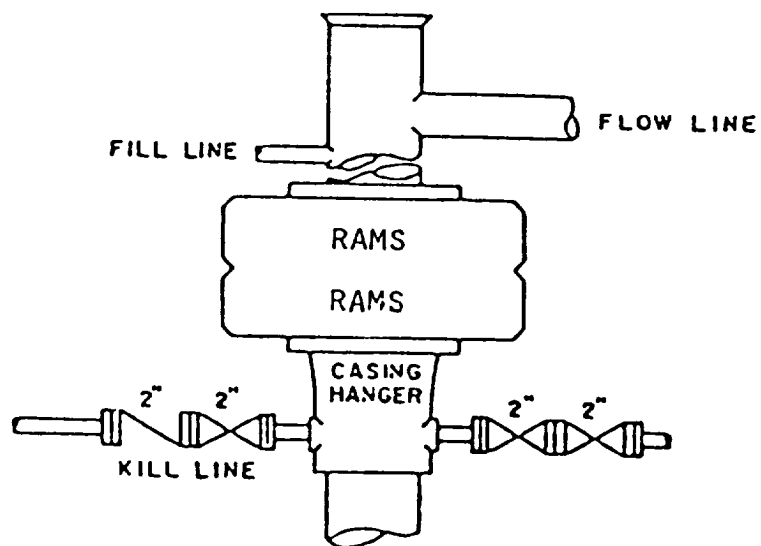
August 9, 1983

His/Her/Its Professional Engineer and/or Land Surveyor

John D. Jaques, P.E. & L.S.

Certificate No.

6290



BLOWOUT PREVENTER SKETCH

Murphy Operating Corporation
Well #15 TLSAU 30
660' FSL & 1980' FEL Sec. 30-7S-36E