

01106

CONSERVATION DIVISION

P. O. BOX 2088

Form C-102
Revised 10-1-79

STATE OF NEW MEXICO
ENERGY AND MINERALS DEPARTMENT

SANTA FE, NEW MEXICO 87501

All distances must be from the outer boundaries of the Section.

Operator Murphy Operating Corp.		Lease TLSAU 30		Well No. 9
Unit Letter I	Section 30	Township 7 South	Range 36 East	County Roosevelt
Actual Footage Location of Well:				
1980	feet from the	South	line and	660
			feet from the	East
				line
Ground Level Elev. 4144	Producing Formation Slaughter		Pool Todd Lower San Andres	Dedicated Acres 80

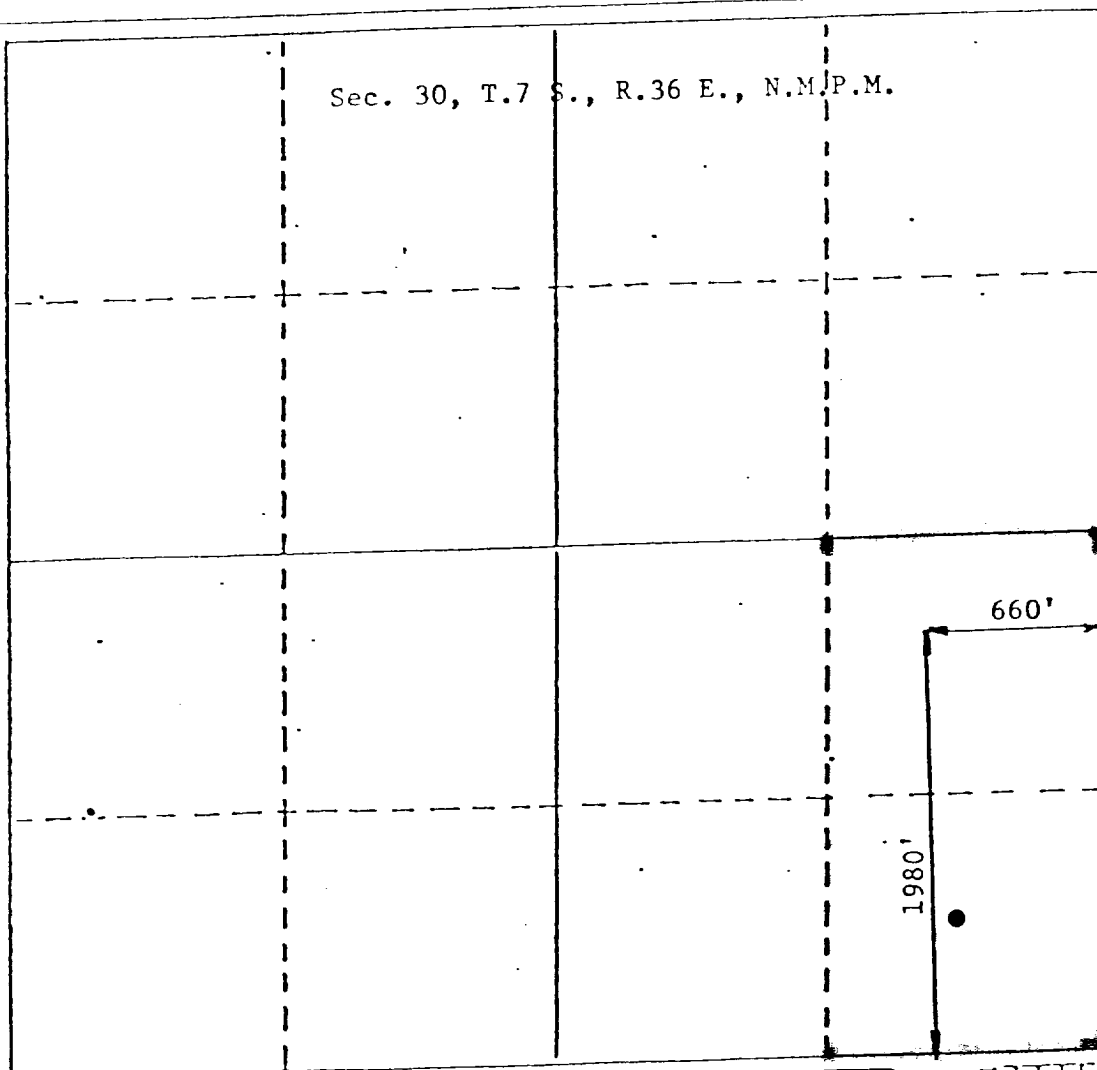
- Outline the acreage dedicated to the subject well by colored pencil or hatchure marks on the plat below.
- If more than one lease is dedicated to the well, outline each and identify the ownership thereof (both as to working interest and royalty).
- If more than one lease of different ownership is dedicated to the well, have the interests of all owners been consolidated by communitization, unitization, force-pooling, etc?

☐ Yes ☐ No If answer is "yes," type of consolidation _____

If answer is "no," list the owners and tract descriptions which have actually been consolidated. (Use reverse side of this form if necessary.) _____

No allowable will be assigned to the well until all interests have been consolidated (by communitization, unitization, forced-pooling, or otherwise) or until a non-standard unit, eliminating such interests, has been approved by the Division.

Sec. 30, T.7 S., R.36 E., N.M.P.M.



CERTIFICATION

I hereby certify that the information contained herein is true and complete to the best of my knowledge and belief.

James A. Knauf
Name

James A. Knauf

Position
Agent

Company
MURPHY OPERATING CORP.

Date
August 23, 1983

I hereby certify that the well location shown on this plat was plotted from field notes of actual surveys made by me or under my supervision, and that the same is true and correct to the best of my knowledge and belief.

JOHN D. JAQUESS
NEW MEXICO
August 9, 1983
Professional Engineer
and Surveyor
John D. Jaquess, P.E. & L.S.
Certificate No. 6290