

STATE OF NEW MEXICO
ENERGY AND MINERALS DEPARTMENT

OIL CONSERVATION DIVISION

P. O. BOX 2088

SANTA FE, NEW MEXICO 87501

Form C-101
Revised 10-1-78

NO. OF COPIES RECEIVED	
DISTRIBUTION	
SANTA FE	
FILE	
U.S.G.S.	
LAND OFFICE	
OPERATOR	

APPLICATION FOR PERMIT TO DRILL, DEEPEN, OR PLUG BACK

Type of Work

Type of Well DRILL ☒ DEEPEN ☐ PLUG BACK ☐
OIL WELL ☒ GAS WELL ☐ OTHER ☐ SINGLE ZONE ☐ MULTIPLE ZONE ☐

Name of Operator

Yates Petroleum Corporation

Address of Operator

207 South 4th Street Artesia, New Mexico 88210

Location of Well

UNIT C. 11 E LOCATED 1980 FEET FROM THE North LINE

660 FEET FROM THE West LINE OF SEC. 11 TWP. 7S RGE. 33E NMPM

5A. Indicate Type of Lease
STATE ☐ FEE ☒

5. State Oil & Gas Lease No.

7. Unit Agreement Name

8. Farm or Lease Name

Tucker "ABI"

9. Well No.

2

10. Field and Pool, or Wildcat

Chaveroo North

UNDESIGNATED

12. County

Roosevelt

19. Proposed Depth

8500

19A. Formation

Bough "B"

20. Rotary or C.T.

Rotary

21A. Kind & Volume Prop. Bond

4373.2 GL

Blanket

21B. Drilling Contractor

Undes.

22. Approx. Date Work will start

ASAP

PROPOSED CASING AND CEMENT PROGRAM

SIZE OF HOLE	SIZE OF CASING	WEIGHT PER FOOT	SETTING DEPTH	SACKS OF CEMENT	EST. TOP
17-1/2"	13-3/8"	54#+50#J-55	375'	375 SX	circ.
11"	8-5/8"	24#+32#J-55	3450'	1100 SX	circ.
7-7/8"	5-1/2"	17+15.50# + N80+J-55	TD	As warranted	

We propose to drill and test the Bough "B" and intermediate formations. Approximately 375' of surface casing will be set and cement circulated to shut off gravel and caving. If commercial, production casing will be run and cemented with adequate cover, perforated and stimulated as needed for production.

MUD PROGRAM: FW gel/LCM surface to 375', FW to 3450', SW gel/starch to TD.

BOP PROGRAM: BOP's will be installed at the offset and tested daily.

Permit Expires 6 Months From Approval
Date Unless Drilling Underway.

BOVE SPACE DESCRIBE PROPOSED PROGRAM; IF PROPOSAL IS TO DEEPEN OR PLUG BACK, GIVE DATA ON PRESENT PRODUCTIVE ZONE AND PROPOSED NEW PRODUCTIVE ZONE. GIVE BLOWOUT PREVENTER PROGRAM, IF ANY.

by certify that the information above is true and complete to the best of my knowledge and belief.

ed Jerry Sexton Title Regulatory Agent Date 2/27/85

(This space for State Use)

ORIGINAL SIGNED BY JERRY SEXTON

ROVED BY DISTRICT 1 SUPERVISOR TITLE DATE MAR - 1 1985

DITIONS OF APPROVAL, IF ANY:

RECEIVED

FEB 28 1985

O.C.O.
HOBBS OFFICE

**NEW MEXICO OIL CONSERVATION COMMISSION
WELL LOCATION AND ACREAGE DEDICATION PLAT**

Form C-102
Supersedes C-128
Effective 1-1-65

All distances must be from the outer boundaries of the Section.

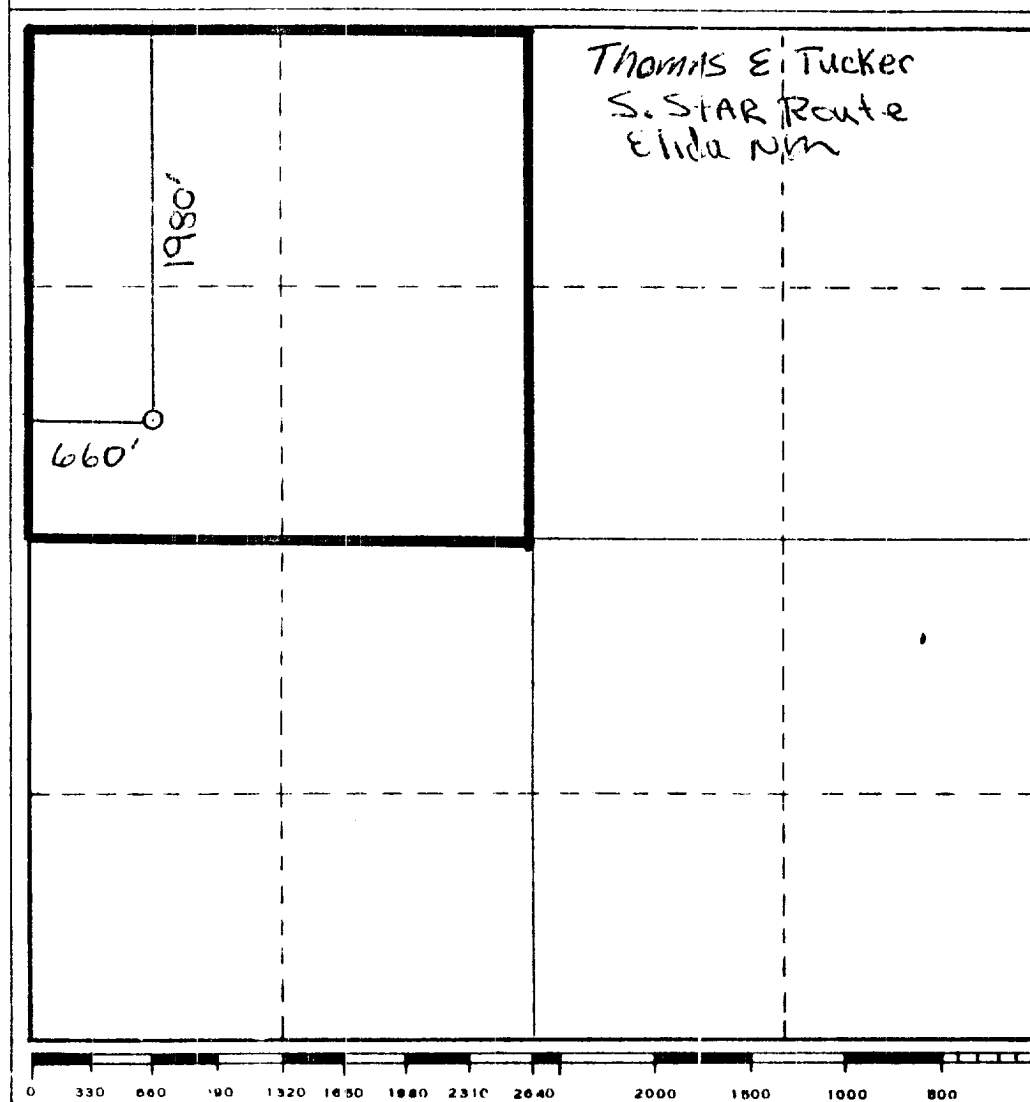
Operator Yates Petroleum Corporation			Lease Tucker "ABI"		Well No. 2
Unit Letter E	Section 11	Township 7S	Range 33E	County Roosevelt	
Actual Footage Location of Well: 1980 feet from the North line and 650 feet from the West line					
Ground Level Elev. 4373.2 GL	Dedicated Formation Bough B	Pool CHAUEROO North	Dedicated Acreage: 160 Acres		

1. Outline the acreage dedicated to the subject well by colored pencil or hatchure marks on the plat below.
2. If more than one lease is dedicated to the well, outline each and identify the ownership thereof (both as to working interest and royalty).
3. If more than one lease of different ownership is dedicated to the well, have the interests of all owners been consolidated by communitization, unitization, force-pooling, etc?

☐ Yes ☒ No If answer is "yes," type of consolidation _____

If answer is "no," list the owners and tract descriptions which have actually been consolidated. (Use reverse side of this form if necessary.) _____

No allowable will be assigned to the well until all interests have been consolidated (by communitization, unitization, forced-pooling, or otherwise) or until a non-standard unit, eliminating such interests, has been approved by the Commission.



CERTIFICATION

I hereby certify that the information contained herein is true and complete to the best of my knowledge and belief.

Cy Cowan
Name

Cy Cowan

Position
Regulatory Agent

Company
Yates Petroleum Corp.

Date
2-27-85

I hereby certify that the well location shown on this plat was plotted from field notes of actual surveys made by me or under my supervision, and that the same is true and correct to the best of my knowledge and belief.

Date Surveyed

Registered Professional Engineer
and/or Land Surveyor

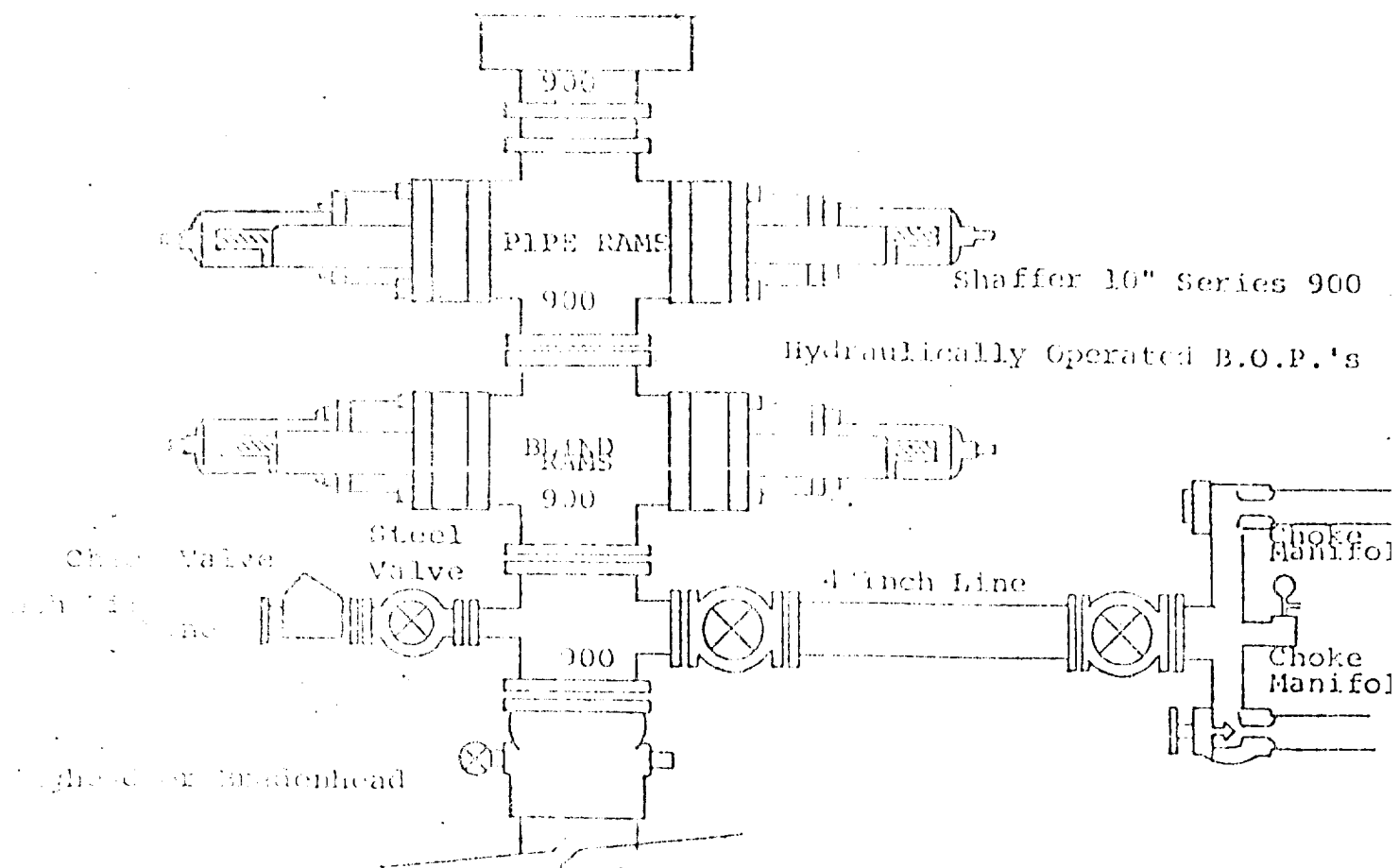
Herschel Jones
Certificate No.

3640

RECEIVED

FEB 28 1985

022
HOBBS OFFICE



WELLHEAD ASSEMBLY MINIMUM BLOWOUT PREVENTER REQUIREMENTS

All preventers to be hydraulically operated with secondary manual control installed prior to drilling out from under casing.

Choke outlet to be a minimum of 4" diameter.

Kill line to be of all steel construction of 2" minimum diameter.

All connections from operating manifolds to preventers to be all steel. Hole or tube a minimum of one inch in diameter.

The available closing pressure shall be at least 15% in excess of that required with sufficient volume to operate the B.O.P.'s.

All connections to and from preventer to have a pressure rating equivalent to that of the B.O.P.'s.

Inside blowout preventer to be available on rig floor.

Operating controls located a safe distance from the rig floor.

Hole must be kept filled on trips below intermediate casing. Operator not responsible for blowouts resulting from not keeping hole full.

B.P. float must be installed and used below zone of first gas intrusion.

RECEIVED

FEB 28 1985

O.C.D.
HOBBY OFFICE

11/11/84