

AMENDED REPORT (January 21, 1988)  
OIL CONSERVATION DIVISION

STATE OF NEW MEXICO  
ENERGY AND MINERALS DEPARTMENT

P. O. BOX 2088  
SANTA FE, NEW MEXICO 87501

Form C-102  
Revised 10-1-78

All distances must be from the outer boundaries of the Section.

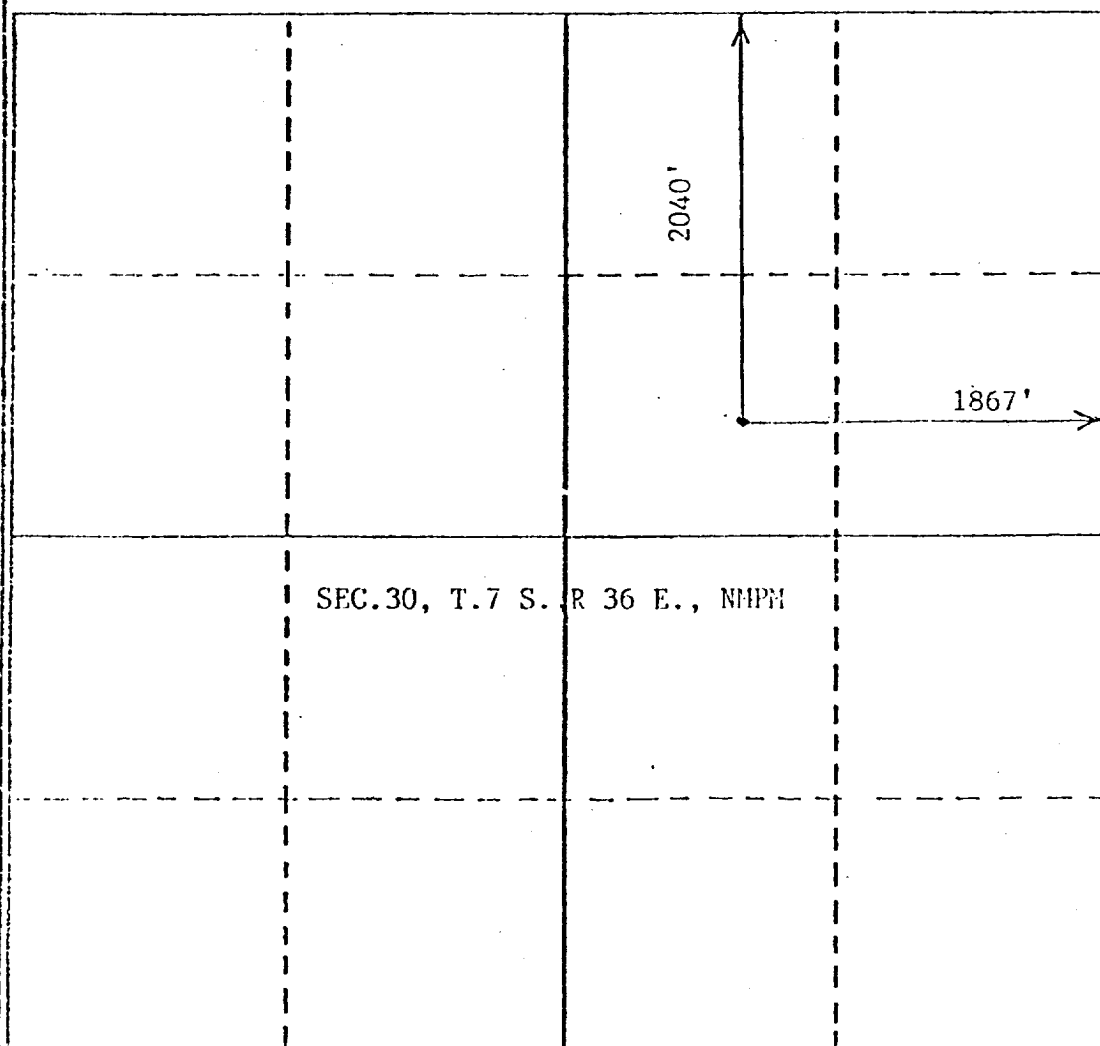
Operator <b>MURPHY OPERATING</b>		Lease <b>TODD LOWER SAN ANDRES UNIT</b>		Well No. <b>Sec 30</b> <del>30-7</del>
Unit Letter (S) <b>G</b>	Section <b>30</b>	Township <b>7 SOUTH</b>	Range <b>36 EAST</b>	County <b>ROOSEVELT</b>
Actual Footage Location of Well:				
2040 feet from the NORTH line and		1867 feet from the EAST line		
Ground Level Elev. <b>4154</b>	Producing Formation <b>SAN ANDRES P-2</b>	Pool <b>TODD LOWER SAN ANDRES</b>	Dedicated Acreage <b>80</b>	Acres

1. Outline the acreage dedicated to the subject well by colored pencil or hatchure marks on the plat below.
2. If more than one lease is dedicated to the well, outline each and identify the ownership thereof (both as to working interest and royalty).
3. If more than one lease of different ownership is dedicated to the well, have the interests of all owners been consolidated by communitization, unitization, force-pooling, etc?

☐ Yes ☐ No If answer is "yes," type of consolidation \_\_\_\_\_

If answer is "no," list the owners and tract descriptions which have actually been consolidated. (Use reverse side of this form if necessary.) \_\_\_\_\_

No allowable will be assigned to the well until all interests have been consolidated (by communitization, unitization, forced-pooling, or otherwise) or until a non-standard unit, eliminating such interests, has been approved by the Division.



CERTIFICATION

I hereby certify that the information contained herein is true and complete to the best of my knowledge and belief.

*Matthew B. Murphy*

Name  
**Matthew B. Murphy**  
Position  
**Production Agent**  
Company  
**Murphy Operating Corporation**

Date  
**1/25/88**

I hereby certify that the well location shown on this plat was plotted from notes of actual surveys made by me under my supervision, and that the same is true and correct to the best knowledge and belief.

**JOHN D. JACQUES**  
Date Surveyed  
**JANUARY 25, 1988**  
Registered Professional Engineer  
No. 10000  
**JOHN D. JACQUES**  
Certification No. **19-8290**

RECEIVED

JAN 28 1988

DELO  
HOBBS OFFICE