

UNITED STATES
DEPARTMENT OF THE INTERIOR
BUREAU OF LAND MANAGEMENT

SUBMIT IN DUPLICATE

N. M. OIL CONS. COMMISSION
P. O. BOX 1980
HOBBS, NEW MEXICO 88240

Form approved.
Budget Bureau No. 1004-0137
Expires August 31, 1985

5. LEASE DESIGNATION AND SERIAL NO.

NM-12852

6. IF INDIAN, ALLOTTEE OR TRIBE NAME

7. UNIT AGREEMENT NAME

8. FARM OR LEASE NAME

Federal "27" A

9. WELL NO.

1

10. FIELD AND POOL, OR WILDCAT

North Bluit

(Siluro-Devonian)

11. SEC. T. R., M., OR BLOCK AND SURVEY OR AREA

Sec 27, T 7-S, R 37-E

12. COUNTY OR PARISH

Roosevelt

13. STATE

NM

1a. TYPE OF WELL: OIL WELL ☒ GAS WELL ☐ DRY ☐ Other

b. TYPE OF COMPLETION: NEW WELL ☒ WORK OVER ☐ DEEP-EN ☐ PLUG BACK ☐ DIFF. RESVR. ☐ Other

2. NAME OF OPERATOR

H. L. Brown, Jr.

3. ADDRESS OF OPERATOR

P. O. Box 2237, Midland, Texas 79702

4. LOCATION OF WELL (Report location clearly and in accordance with any State requirements)*

At surface Unit C, 660' FNL & 1980' FWL, Sec 27, T 7-S, R 37-E

At top prod. interval reported below Same as above

At total depth Same as above

14. PERMIT NO.

DATE ISSUED

6-9-88

15. DATE SPUDDED

7-7-88

16. DATE T.D. REACHED

8-1-88

17. DATE COMPL. (Ready to prod.)

9-21-88

18. ELEVATIONS (DF, RKB, RT, GR, ETC.)*

4074.6 KB

19. ELEV. CASINGHEAD

4058.4 GR

20. TOTAL DEPTH, MD & TVD

9200'

21. PLUG, BACK T.D., MD & TVD

9087'

22. IF MULTIPLE COMPL., HOW MANY*

23. INTERVALS DRILLED BY

ROTARY TOOLS

X

CABLE TOOLS

24. PRODUCING INTERVAL(S), OF THIS COMPLETION—TOP, BOTTOM, NAME (MD AND TVD)*

8904.5 to 8950 - North Bluit (Siluro-Devonian)

25. WAS DIRECTIONAL SURVEY MADE

No

26. TYPE ELECTRIC AND OTHER LOGS RUN

DNL/DLL CNL/Density/Caliper GR/N/CCL

27. WAS WELL CORED

No

28. CASING RECORD (Report all strings set in well)

CASING SIZE	WEIGHT, LB./FT.	DEPTH SET (MD)	HOLE SIZE	CEMENTING RECORD	AMOUNT PULLED
13 3/8	48	519	17 1/2	500 sx class "C"	115 sx to surface
8 5/8	32	3810	12 1/4 & 11	1500 sx 35/65 Poz/"C"	
				300 sx class "C"	390 sx to surface
5 1/2	17	9198	7 7/8	700 sx 35/65 Poz/"H"	
				430 sx class "H"	TOC 5475'

29. LINER RECORD

SIZE	TOP (MD)	BOTTOM (MD)	SACKS CEMENT*	SCREEN (MD)	SIZE	DEPTH SET (MD)	PACKER SET (MD)
					2 3/8	8979'	None

31. PERFORATION RECORD (Interval, size and number)

8909, 8916, 8922-8930, 8933, 8934, 8942, 8947-8950 w/ 1 JSPF 18 holes
8904.5, 8909, 8912, 8916, 8921-8934, 8939, 8942-8944 w/ 4 SPF 88 holes

32. ACID, SHOT, FRACTURE, CEMENT SQUEEZE, ETC.

DEPTH INTERVAL (MD)	AMOUNT AND KIND OF MATERIAL USED
8909-8950	3,500 gal 15% NeFe
8904.5-8950	10,000 gal 15% NeFe
" " "	140,000 SCF N2

33. PRODUCTION

DATE FIRST PRODUCTION		PRODUCTION METHOD (Flowing, gas lift, pumping—size and type of pump)					WELL STATUS (Producing or shut-in)	
8-14-88		Pumping 2" X 1 1/4" X 24' RHBC					Producing	
DATE OF TEST	HOURS TESTED	CHOKE SIZE	PROD'N. FOR TEST PERIOD	OIL—BBL.	GAS—MCF.	WATER—BBL.	GAS-OIL RATIO	
9-21-88	24		→	68	218	9 load water	3205	
FLOW. TUBING PRESS.	CASING PRESSURE	CALCULATED 24-HOUR RATE	OIL—BBL.	GAS—MCF.	WATER—BBL.	OIL GRAVITY-API (CORR.)		
	35	→	68	218	9	45		

34. DISPOSITION OF GAS (Sold, used for fuel, vented, etc.)

TEST WITNESSED BY

To be transported by Transwestern Pipeline

35. LIST OF ATTACHMENTS

C-102, C-104, Certified Inclination, Written request for confidentiality

36. I hereby certify that the foregoing and attached information is complete and correct as determined from all available records

SIGNED

TITLE

Production Engineer

DATE

9-22-88

*(See Instructions and Spaces for Additional Data on BLM MANAGEMENT BUREAU OF LAND MANAGEMENT)

37. SUMMARY OF POROUS ZONES: (Show all important zones of porosity and contents thereof; cored intervals; and all drill-stem, tests, including depth interval tested, cushion used, time tool open, flowing and shut-in pressures, and recoveries):

FORMATION	TOP	BOTTOM	DESCRIPTION, CONTENTS, ETC.	GEOLOGIC MARKERS		
				NAME	MEAS. DEPTH	TRUE VERT. DEPTH
				Yates	2542	+1533
				San Andres	3655	+ 420
				Alonetta	5008	- 933
				Abo	7003	-2928
				Wolfcamp	7963	-3888
				Sil-Devonian	8723	-4648
				Aranite Wash	9127	-5052
				Aranite	9146	-5071

RECEIVED
 DEC 1 1989
 OGD
 HOBBS OFFICE

CONFIDENTIAL

NEW MEXICO OIL CONSERVATION COMMISSION
WELL LOCATION AND ACREAGE DEDICATION PLAT

Form C-102
Supersedes C-128
Effective 1-1-65

All distances must be from the outer boundaries of the Section.

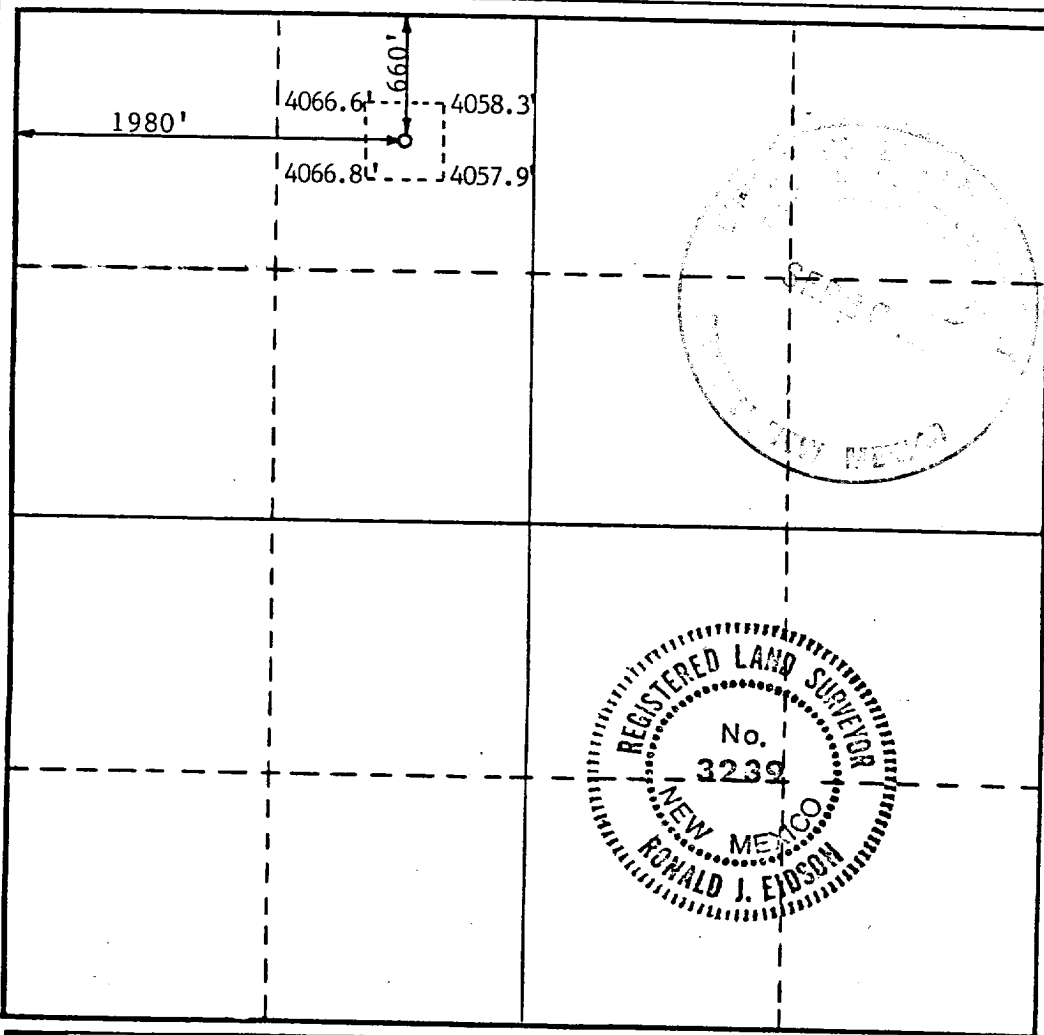
Operator H.L. BROWN JR.			Lease FEDERAL 27A		Well No. 1
Unit Letter C	Section 27	Township 7 SOUTH	Range 37 EAST	County ROOSEVELT	
Actual Footage Location of Well:					
660 feet from the NORTH		line and 1980		feet from the WEST	
Ground Level Elev. 4058.4'	Producing Formation Siluro-Devonian	Pool North Bluit		Dedicated Acreage: 80 Acres	

1. Outline the acreage dedicated to the subject well by colored pencil or hachure marks on the plat below.
2. If more than one lease is dedicated to the well, outline each and identify the ownership thereof (both as to working interest and royalty).
3. If more than one lease of different ownership is dedicated to the well, have the interests of all owners been consolidated by communitization, unitization, force-pooling, etc?

☐ Yes ☒ No If answer is "yes," type of consolidation _____

If answer is "no," list the owners and tract descriptions which have actually been consolidated. (Use reverse side of this form if necessary.) _____

No allowable will be assigned to the well until all interests have been consolidated (by communitization, unitization, forced-pooling, or otherwise) or until a non-standard unit, eliminating such interests, has been approved by the Commission.



CERTIFICATION

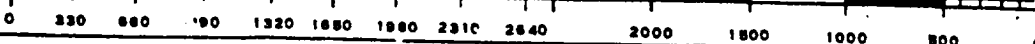
I hereby certify that the information contained herein is true and complete to the best of my knowledge and belief.

Name J. M. Beique
Position Production Engineer
Company H. L. Brown, Jr.
Date 9-22-88

I hereby certify that the well location shown on this plat was plotted from field notes of actual surveys made by me or under my supervision, and that the same is true and correct to the best of my knowledge and belief.

Date Surveyed APRIL 20, 1988
Registered Professional Engineer and/or Land Surveyor

Ronald J. Eidson
Certificate No. JOHN W. WEST, 676
RONALD J. EIDSON, 3239



N. M. OIL CONS. COMMISSION
P. O. BOX 1980
HOBBS, NEW MEXICO 88240

H. L. BROWN, JR.
POST OFFICE BOX 2237
MIDLAND, TEXAS 79702-2237

September 22, 1988

Bureau of Land Management
Post Office Box 1857
Roswell, New Mexico 88201

State of New Mexico
Oil Conservation Division
Post Office Box 1980
Hobbs, New Mexico 88240-1980

Re: Request for Confidentiality
Federal "27" A Well No. 1
Roosevelt County, New Mexico

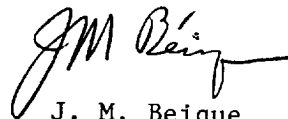
Gentlemen:

By copy of this letter, H. L. Brown, Jr., as operator, is requesting that all completion data, logs, etc., be kept confidential for a period of no less than one (1) year or until further notice from the operator.

If further information is necessary to comply with this request, please do not hesitate to contact the undersigned.

Very truly yours,

H. L. BROWN, JR.



J. M. Beique
Production Engineer

JMB/ds

cc: file