

STATE OF NEW MEXICO
ENERGY AND MINERALS DEPARTMENT

CONSERVATION DIVISION
P. O. BOX 2088
SANTA FE, NEW MEXICO 87501

30-041-20837
Form C-101
Revised 10-1-78

| | |
|------------------------|--|
| NO. OF COPIES RECEIVED | |
| DISTRIBUTION | |
| SANTA FE | |
| FILE | |
| U.S.G.S. | |
| LAND OFFICE | |
| OPERATOR | |

5A. Indicate Type of Lease
STATE ☐ FEE ☒

5. State Oil & Gas Lease No.

APPLICATION FOR PERMIT TO DRILL, DEEPEN, OR PLUG BACK

1a. Type of Work

b. Type of Well DRILL ☒ DEEPEN ☐ PLUG BACK ☐
OIL WELL ☒ GAS WELL ☐ OTHER ☐ SINGLE ZONE ☒ MULTIPLE ZONE ☐

2. Name of Operator

Williams Oil Company

3. Address of Operator

Box 3012 Midland, Texas 79702

4. Location of Well

UNIT LETTER J LOCATED 1980 FEET FROM THE South LINE

AND 2310 FEET FROM THE East LINE OF SEC. 5 TWP. 7S RGE. 34E NMPM

7. Unit Agreement Name

8. Farm or Lease Name

Brown

9. Well No.

#1

10. Field and Pool, or Wildcat

Chaveroo Northeast

12. County

Roosevelt

19. Proposed Depth

4400

19A. Formation

San Andres

20. Rotary or C.T.

Rotary

21. Elevations (show whether DF, RT, etc.)

4331 GL

21A. Kind & Status Plug. Bond

Single Well Cash

21B. Drilling Contractor

Sitton

22. Approx. Date Work will start

Sept. 15, 1988

PROPOSED CASING AND CEMENT PROGRAM

| SIZE OF HOLE | SIZE OF CASING | WEIGHT PER FOOT | SETTING DEPTH | SACKS OF CEMENT | EST. TOP |
|--------------|----------------|-----------------|---------------|-----------------|----------|
| 12 1/4 | 8 5/8 | 24 | 450 | 285 | Surface |
| 7 7/8 | 4 1/2 | 10.5 | 4400 | 1095 | Surface |

Proposed Program: Drill new well to test the San Andres formation at - 4100'. Run two 60' cores, open hole log and run 4 1/2" production casing if well appears commercial.

IN ABOVE SPACE DESCRIBE PROPOSED PROGRAM: IF PROPOSAL IS TO DEEPEN OR PLUG BACK, GIVE DATA ON PRESENT PRODUCTIVE ZONE AND PROPOSED NEW PRODUCTIVE ZONE. GIVE BLOWOUT PREVENTER PROGRAM, IF ANY.

I hereby certify that the information above is true and complete to the best of my knowledge and belief.

Signed PO Williams Title President Date 8-30-88

(This space for State Use)

APPROVED BY ORIGINAL SIGNED BY JERRY SEXTON

CONDITIONS OF APPROVAL DISTRICT 1 SUPERVISOR

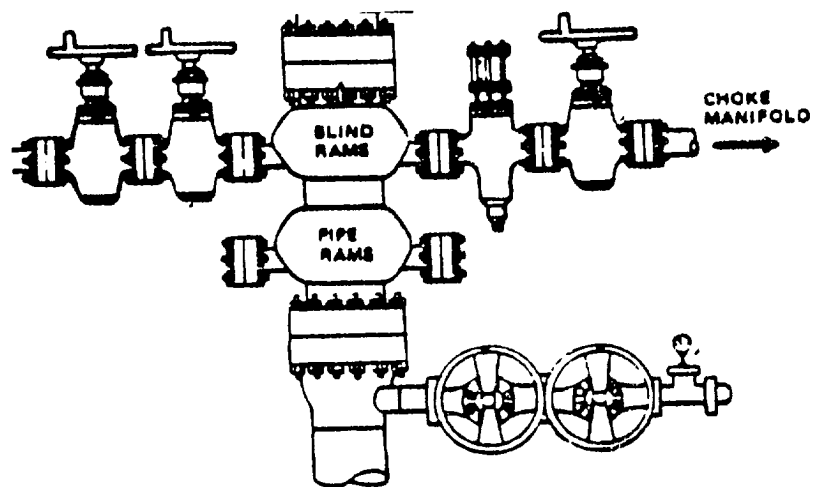
TITLE

DATE

Permit Expires 6 Months From Approval
Date Unless Drilling Underway.



DOUBLE RAM BLOW OUT PREVENTER



WILLIAMS OIL COMPANY
BROWN #1
ROOSEVELT CO, NM

Rio Williams
9-6-88



NEW MEXICO OIL CONSERVATION COMMISSION
WELL LOCATION AND ACREAGE DEDICATION PLAT

Form C-102
Supersedes C-128
Effective 1-1-85

All distances must be from the outer boundaries of the Section

| | | | | | |
|--|-----------------------------------|---------------------|-----------------------------|--------------------------------|---------------|
| Operator Williams Oil Company | | | Lease Brown | | Well No. 1 |
| Tract Letter J | Section 5 | Township 7 South | Range 34 East | County Roosevelt | |
| Actual Footage Location of Well: 1980 feet from the South line and 2310 feet from the East line | | | | | |
| Ground Level Elev. 4330.7 | Producing Formation SAN ANDRES | | Pool CHAUVERON NORTHEAST | Dedicated Acreage: 40 Acres | |

1. Outline the acreage dedicated to the subject well by colored pencil or hatchure marks on the plat below.
2. If more than one lease is dedicated to the well, outline each and identify the ownership thereof (both as to working interest and royalty).
3. If more than one lease of different ownership is dedicated to the well, have the interests of all owners been consolidated by communitization, unitization, force-pooling, etc?

☐ Yes ☐ No If answer is "yes," type of consolidation N/A

If answer is "no," list the owners and tract descriptions which have actually been consolidated. (Use reverse side of this form if necessary.)

No allowable will be assigned to the well until all interests have been consolidated (by communitization, unitization, forced-pooling, or otherwise) or until a non-standard unit, eliminating such interests, has been approved by the Commission.



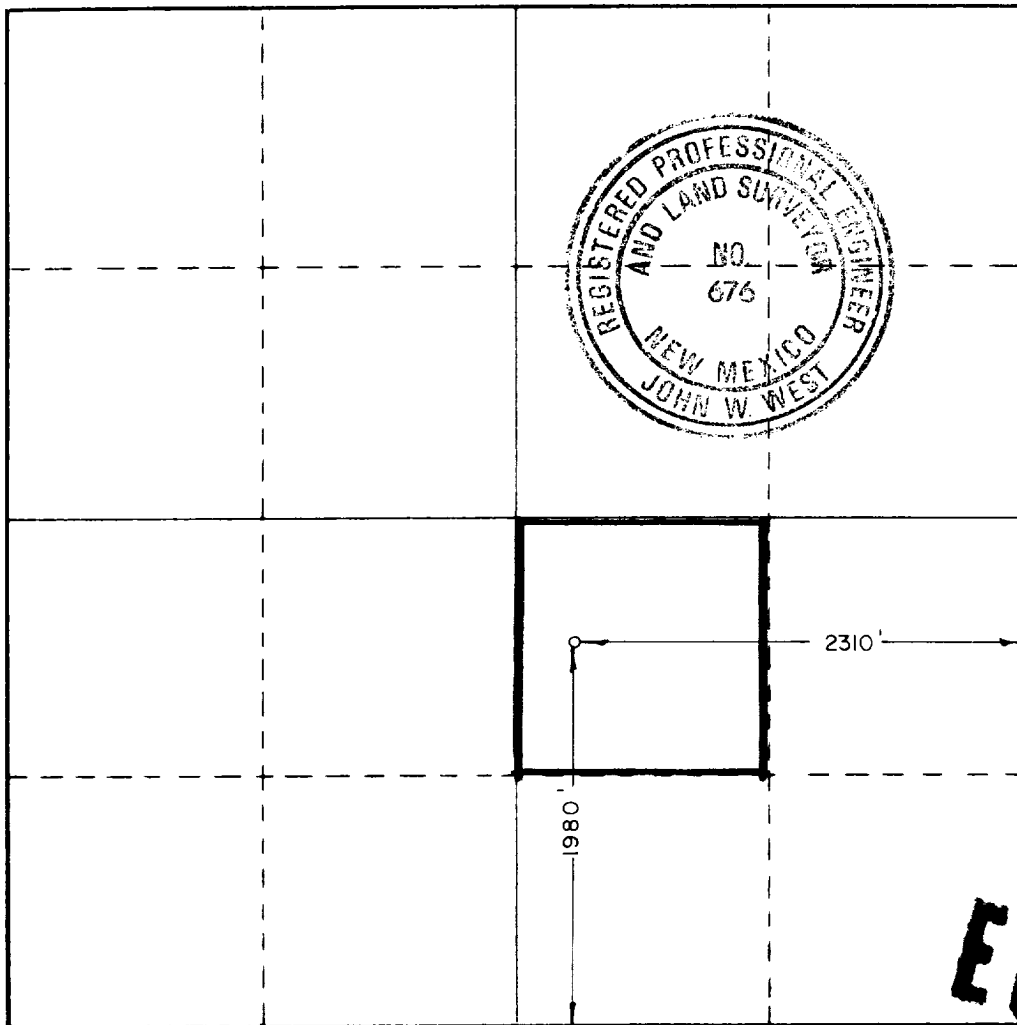
CERTIFICATION

I hereby certify that the information contained herein is true and complete to the best of my knowledge and belief.

Name R.O. Williams
Position PRESIDENT
Company WILLIAMS OIL COMPANY
Date 8-30-88

I hereby certify that the well location shown on this plat was plotted from field notes of actual surveys made by me or under my supervision, and that the same is true and correct to the best of my knowledge and belief.

Date Surveyed
August 26, 1988
Registered Professional Engineer and/or Land Surveyor
[Signature]
Certificate No. JOHN W. WEST, 676
RONALD J. EIDSON, 3239



96560

Recd 11-29-88

173

RECEIVED

AUG 31 1988

OCD
HOBBS OFFICE