

OIL CONSERVATION DIVISION

P.O. Box 2088

Santa Fe, New Mexico 87504-2088

DISTRICT I
P.O. Box 1980, Hobbs, NM 88240

DISTRICT II
P.O. Drawer DD, Artesia, NM 88210

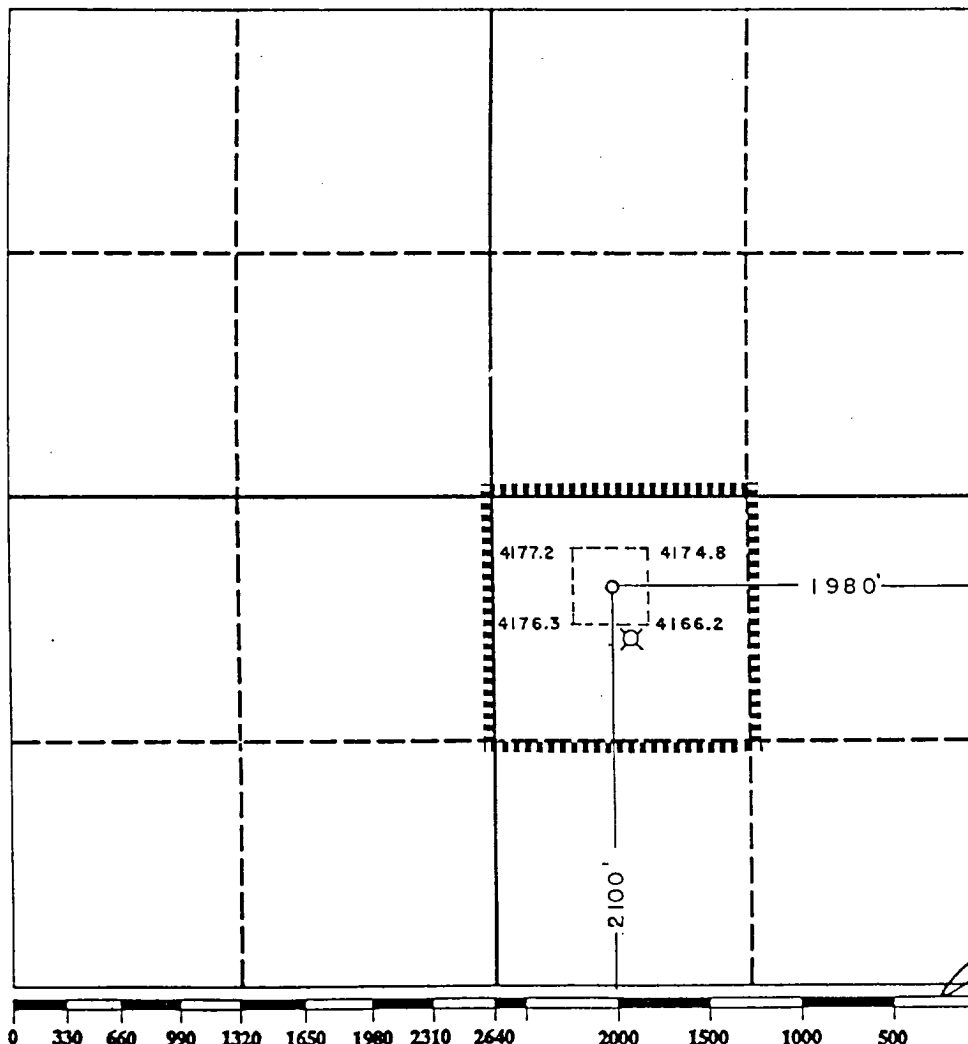
DISTRICT III
1000 Rio Brazos Rd., Aztec, NM 87410

WELL LOCATION AND ACREAGE DEDICATION PLAT

All Distances must be from the outer boundaries of the section

Operator PETROLEUM PRODUCTION MANAGEMENT, INC.		Lease WILL 693 Ltd.		Well No. 5	
Unit Letter J	Section 34	Township 8 SOUTH	Range 35 EAST NMPM	County ROOSEVELT	
Actual Footage Location of Well:					
2100 feet from the SOUTH line and		1980 feet from the EAST line			
Ground level Elev. 4173.8	Producing Formation San Andres		Pool Wildcat		Dedicated Acreage: 40 Acres

1. Outline the acreage dedicated to the subject well by colored pencil or hatchure marks on the plat below.
2. If more than one lease is dedicated to the well, outline each and identify the ownership thereof (both as to working interest and royalty).
- SINGLE LEASE
3. If more than one lease of different ownership is dedicated to the well, have the interest of all owners been consolidated by communitization, unitization, force-pooling, etc.?
- ☐ Yes ☐ No If answer is "yes" type of consolidation _____
- If answer is "no" list the owners and tract descriptions which have actually been consolidated. (Use reverse side of this form if necessary.) _____
- No allowable will be assigned to the well until all interests have been consolidated (by communitization, unitization, forced-pooling, or otherwise) or until a non-standard unit, eliminating such interest, has been approved by the Division.



OPERATOR CERTIFICATION

I hereby certify that the information contained herein is true and complete to the best of my knowledge and belief.

Signature _____

Printed Name _____

JERRY W. LONG

Position

Permit Agent

Company

PETROLEUM PROD. MGT., INC.

Date _____

December 28, 1990

SURVEYOR CERTIFICATION

I hereby certify that the well location shown on this plat was plotted from field notes of actual surveys made by me or under my supervision, and that the same are true and correct to the best of my knowledge and belief.

Date Surveyed _____

NEW MEXICO
JUN 14 1990

Signature & Seal of V
Professional Surveyor

Certificate No. JOHN W. WEST, 676

RONALD J. EIDSON. 3239