

District I  
1625 N. French Dr., Hobbs, NM 88240  
District II  
1301 W. Grand Avenue, Artesia, NM 88210  
District III  
1000 Rio Brazos Road, Aztec, NM 87410  
District IV  
1220 S. St. Francis Dr., Santa Fe, NM 87505

State of New Mexico  
Energy Minerals and Natural Resources

Form C-101  
Revised March 17, 1999

Oil Conservation Division  
1220 South St. Francis Dr.  
Santa Fe, NM 87505

Submit to appropriate District Office  
State Lease - 6 Copies  
Fee Lease - 5 Copies

☐ AMENDED REPORT

APPLICATION FOR PERMIT TO DRILL, RE-ENTER, DEEPEN, PLUGBACK, OR ADD A ZONE

<sup>1</sup> Operator Name and Address LAYTON ENTERPRISES, INC. 3103 79th St. LUBBOCK, TEXAS 79423		<sup>2</sup> OGRID Number 013178
<sup>3</sup> Property Code 005787	<sup>4</sup> Property Name FOX B STATE	<sup>5</sup> API Number 30-0-11-11-11-11 <sup>6</sup> Well No. 3

<sup>7</sup> Surface Location

UL or lot no.	Section	Township	Range	Lot Idn	Feet from the	North/South line	Feet from the	East/West line	County
I	36	8S	36E		1980	SOUTH	510	EAST	ROOSEVELT

<sup>8</sup> Proposed Bottom Hole Location If Different From Surface

UL or lot no.	Section	Township	Range	Lot Idn	Feet from the	North/South line	Feet from the	East/West line	County

<sup>9</sup> Proposed Pool 1

ALLISON PENN

<sup>10</sup> Proposed Pool 2

<sup>11</sup> Work Type Code N	<sup>12</sup> Well Type Code O	<sup>13</sup> Cable/Rotary R	<sup>14</sup> Lease Type Code S	<sup>15</sup> Ground Level Elevation 4044
<sup>16</sup> Multiple NO	<sup>17</sup> Proposed Depth 9900	<sup>18</sup> Formation PENN	<sup>19</sup> Contractor TBA	<sup>20</sup> Spud Date ASAP

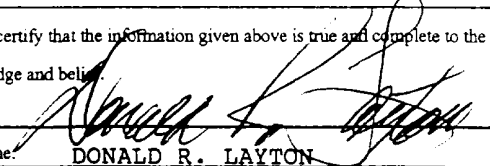
<sup>21</sup> Proposed Casing and Cement Program

Hole Size	Casing Size	Casing weight/foot	Setting Depth	Sacks of Cement	Estimated TOC
24	20	62	40	REDI-MIX	TO SURFACE
17½	13 3/8	48	350	400	SURFACE
12½	8 5/8	32	4150	1800	SURFACE
7 7/8	5½	20	9900	1800	3000

<sup>22</sup> Describe the proposed program. If this application is to DEEPEN or PLUG BACK, give the data on the present productive zone and proposed new productive zone.  
Describe the blowout prevention program, if any. Use additional sheets if necessary.

INTEND TO DRILL TO 9900' TO TEST BOUGH "C" (PENN) ZONE. BLOWOUT PREVENTOR  
PROGRAM WILL INCLUDE DOUBLE RAM 3000 PSI PREVENTORS. MUD PROGRAM WILL  
EMPLOY 9.5 - 10# MUD.

Permit Expires 1 Year From Approval  
Date Unless Drilling Underway

<sup>23</sup> I hereby certify that the information given above is true and complete to the best of my knowledge and belief.		OIL CONSERVATION DIVISION	
Signature: 		Approved by: ORIGINAL SIGNED BY PAUL F. KAUTZ	
Printed name: DONALD R. LAYTON		Title: PETROLEUM ENGINEER	
Title: PRESIDENT		Approval Date: JUN 1 1 2002	Expiration Date:
Date: 6/5/2002	Phone: 806/745-4638	Conditions of Approval: Attached <input type="checkbox"/>	

J  
C  
A

mfp

DISTRICT I  
1625 N. French Dr., Hobbs, NM 88240

DISTRICT II  
811 South First, Artesia, NM 88210

DISTRICT III  
1000 Rio Brazos Rd., Aztec, NM 87410

DISTRICT IV  
2040 South Pacheco, Santa Fe, NM 87505

State of New Mexico  
Energy, Minerals and Natural Resources Department

Form C-102  
Revised March 17, 1999

Submit to Appropriate District Office

State Lease - 4 Copies

Fee Lease - 3 Copies

OIL CONSERVATION DIVISION

2040 South Pacheco  
Santa Fe, New Mexico 87504-2088

☐ AMENDED REPORT

WELL LOCATION AND ACREAGE DEDICATION PLAT

API Number <b>30-041-20-14</b>	Pool Code <b>01149</b>	Pool Name <b>ALLISON PENN</b>
Property Code <b>005787</b>	Property Name <b>FOX "B" STATE</b>	Well Number <b>3</b>
OGRID No. <b>013178</b>	Operator Name <b>LAYTON ENTERPRISES, INC.</b>	Elevation <b>4044'</b>

Surface Location

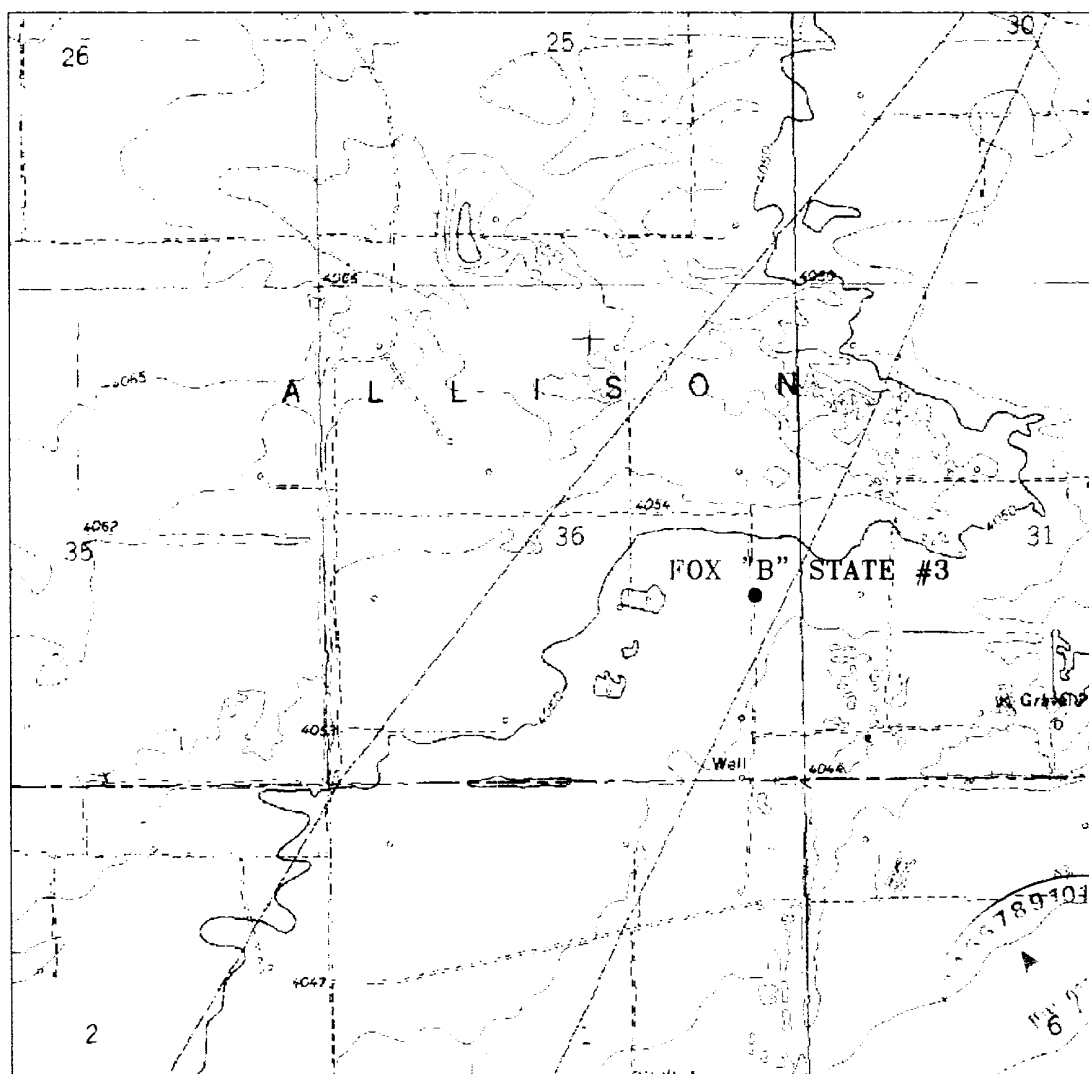
UL or lot No. <b>1</b>	Section <b>36</b>	Township <b>8 S</b>	Range <b>36 E</b>	Lot Idn	Feet from the <b>1980</b>	North/South line <b>SOUTH</b>	Feet from the <b>510</b>	East/West line <b>EAST</b>	County <b>ROOSEVELT</b>
---------------------------	----------------------	------------------------	----------------------	---------	------------------------------	----------------------------------	-----------------------------	-------------------------------	----------------------------

Bottom Hole Location If Different From Surface

UL or lot No.	Section	Township	Range	Lot Idn	Feet from the	North/South line	Feet from the	East/West line	County
Dedicated Acres <b>80</b>	Joint or Infill	Consolidation Code	Order No.						

NO ALLOWABLE WILL BE ASSIGNED TO THIS COMPLETION UNTIL ALL INTERESTS HAVE BEEN CONSOLIDATED  
OR A NON-STANDARD UNIT HAS BEEN APPROVED BY THE DIVISION

	<b>OPERATOR CERTIFICATION</b>  I hereby certify the information contained herein is true and complete to the best of my knowledge and belief.   Signature <b>DONALD R. LAYTON</b> Printed Name <b>PRESIDENT</b> Title <b>6/5/2002</b> Date	
	<b>SURVEYOR CERTIFICATION</b>  I hereby certify that the well location shown on this plat was plotted from field notes of actual surveys made by me or under my supervision and that the same is true and correct to the best of my belief.  <b>MAY 4, 2002</b> Date Surveyed  Signature & Seal of Professional Surveyor <b>W.O. No. 2539</b> Certificate No. Gary L. Jones 7977 <b>BASIN SURVEYS</b>	



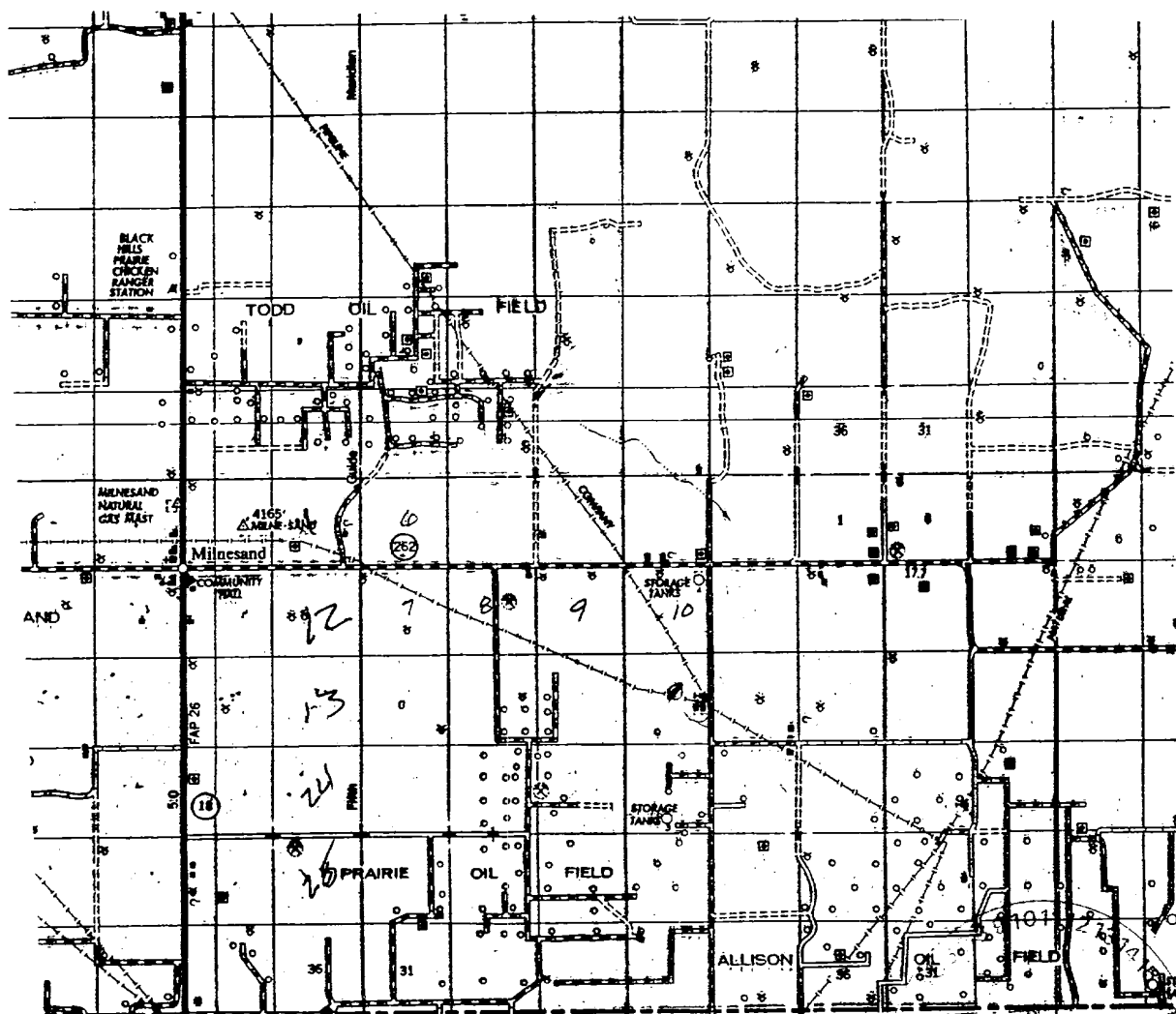
### FOX "B" STATE #3

Located at 1980' E and 5' N of  
 Section 36, Town 36 S, Range 31 E, 1st  
 N.M.P.M. Roosevelt County, New Mexico

**basin**  
**surveys**  
 focused on experience  
 for 40 years

701.664.1785  
 100 N. West County  
 Hobbs, New Mexico 88240  
 505.393-7216 - Office  
 505.392-3174 - Fax  
 basin@basinsurveys.com

**LAYTON**  
**ENTERPRISES,**  
**INC.**



FOX "B" STATE #3  
 Located at 1980' FSL and 510' FEL  
 Section 36, Township 8 South, Range 36 East,  
 N.M.P.M., Roosevelt County, New Mexico.

**basin**  
**surveys**  
 focused on excellence  
 in the oilfield

P.O. Box 1786  
 1120 N. West County Rd.  
 Hobbs, New Mexico 88241  
 (505) 393-7316 - Office  
 (505) 392-3074 - Fax  
 basinsurveys.com

W.O. Number: 2539AA - KJG CD#5

Survey Date: 06-03-2002

Scale: 1" = 2 MILES

Date: 06-04-2002

**LAYTON**  
**ENTERPRISES,**  
**INC.**