

UNITED STATES
DEPARTMENT OF THE INTERIOR
GEOLOGICAL SURVEY(Other instruc
reverse side)

APPLICATION FOR PERMIT TO DRILL, DEEPEN, OR PLUG BACK

1a. TYPE OF WORK

DRILL ☐ RE-ENTERDEEPEN ☐PLUG BACK ☐

b. TYPE OF WELL

OIL
WELL ☒GAS
WELL ☐OTHER ☐SINGLE
ZONE ☒MULTIPLE
ZONE ☐

2. NAME OF OPERATOR

Petroleum Development Corporation

3. ADDRESS OF OPERATOR

9720-B Candelaria, NE, Albuquerque, New Mexico 87117

4. LOCATION OF WELL (Report location clearly and in accordance with any State requirements.)

At surface

660' FSL, 330' FWL, Sec. 27, 12S-30E

At proposed prod. zone

Same

14. DISTANCE IN MILES AND DIRECTION FROM NEAREST TOWN OR POST OFFICE*

16 miles southwest from Caprock, New Mexico

15. DISTANCE FROM PROPOSED*

LOCATION TO NEAREST

PROPERTY OR LEASE LINE, FT.

(Also to nearest drig. unit line, if any)

18. DISTANCE FROM PROPOSED LOCATION*

TO NEAREST WELL, DRILLING, COMPLETED,

OR APPLIED FOR, ON THIS LEASE, FT.

Dry hole

1620' east

16. NO. OF ACRES IN LEASE

320

19. PROPOSED DEPTH

10,000' PBD

17. NO. OF ACRES ASSIGNED
TO THIS WELL

40

20. ROTARY OR CABLE TOOLS

Rotary

21. ELEVATIONS (Show whether DF, RT, GR, etc.)

3921 GL

22. APPROX. DATE WORK WILL START*

August 10, 1977

5. LEASE DESIGNATION AND SERIAL NO.

NM 3286

6. IF INDIAN, ALLOTTEE OR TRIBE NAME

7. UNIT AGREEMENT NAME

8. FARM OR LEASE NAME

Hudson-Federal

9. WELL NO.

1

10. FIELD AND POOL, OR WILDCAT

Wildcat

11. SEC., T., R., M., OR B.L.

AND SURVEY OR AREA

Sec. 27, T12S, R30E

NMMPM

12. COUNTY OR PARISH

Chaves

13. STATE

New Mexico

23. PROPOSED CASING AND CEMENTING PROGRAM

SIZE OF HOLE	SIZE OF CASING	WEIGHT PER FOOT	SETTING DEPTH	QUANTITY OF CEMENT
17 1/2	13 3/8	48#	512	500 sx (already set)
12 1/2	9 5/8	36#	2916	1400 sx (already set)
7 7/8	5 1/2	17#, 15.5#	9900'	300 sx

Re-entry of old hole as follows (formerly Sohio - Monterey Federal #1):
Proposed Procedure:

1. Repair location, build cellar, install wellhead.
2. Move in and rig up, install BOP. Run 7 7/8" bit, drill out cement plugs; do not drill plug at 10,119'. Run maximum of 1000' drill pipe at each stop to condition hole. Pre-mixed pit mud will be brine and salt gel with 3-5% oil. Treat with sodium bicarbonate for cement contamination.
3. Run GR-CNL-Density log 10,119'-7400'. Run GR-CNL 7400'-surface (record Density 3500-3000'). Run dual laterolog over intervals of interest only.
4. DST interval 9734-9790 with straddle packers, using anchor, jars, safety joint, dual packers and equalizer pipe.
5. Condition hole, run 5 1/2" (or 4 1/2") casing, cement to protect zones indicated to be productive. Move off rotary rig.
6. WOC. Complete by perforating with casing guns; acidize or treat as need is indicated.

IN ABOVE SPACE DESCRIBE PROPOSED PROGRAM: If proposal is to deepen or plug back, give data on present productive zone and proposed new productive zone. If proposal is to drill or deepen directionally, give pertinent data on subsurface locations and measured and true vertical depths. Give blowout preventer program, if any.

24.

SIGNED

Charles W. Sanders

TITLE

Vice President

DATE

August 4, 1977

(This space for Federal or State office use)

PERMIT NO.

APPROVAL DATE

APPROVED BY

CONDITIONS OF APPROVAL, IF ANY:

TITLE

DATE

APPROVED

AUG 15 1977

R. L. BEEKMAN

ACTING DISTRICT ENGINEER

*See Instructions On Reverse Side

7-17-77
100-100000-100000
100-100000-100000
100-100000-100000
100-100000-100000

RECEIVED

AUG 18 1977

OIL CONSERVATION COMM.
HOBBS, N. M.

NEW MEXICO OIL CONSERVATION COMMISSION
WELL LOCATION AND ACREAGE DEDICATION PLAT

Form C-102
 Supersedes C-128
 Effective 1-1-65

All distances must be from the outer boundaries of the Section.

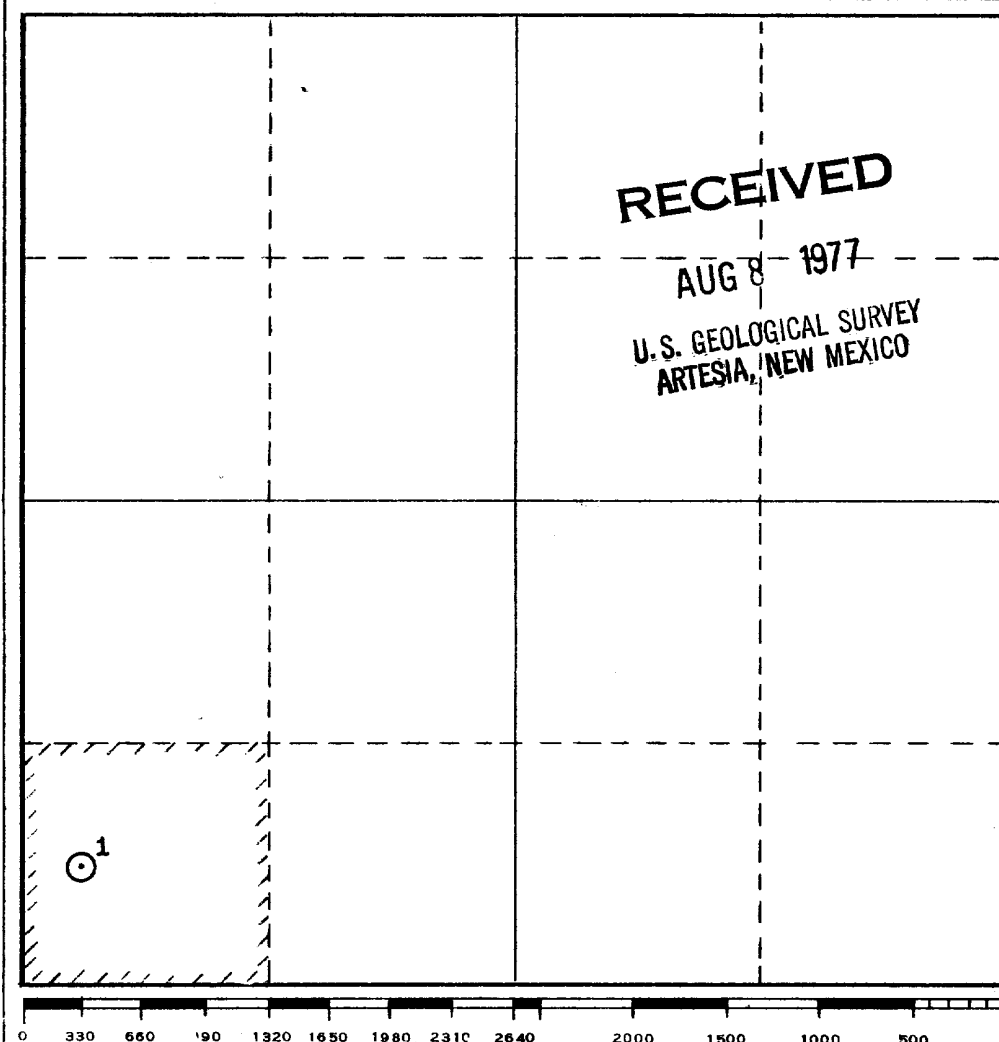
Operator Petroleum Development Corporation			Lease Hudson-Federal		Well No. 1
Unit Letter M	Section 27	Township 12S	Range 30E	County Chaves	
Actual Footage Location of Well: 660 feet from the South line and 330 feet from the West line					
Ground Level Elev. 3921	Producing Formation Mississippian		Pool Wildcat		Dedicated Acreage: 40 Acres

1. Outline the acreage dedicated to the subject well by colored pencil or hachure marks on the plat below.
2. If more than one lease is dedicated to the well, outline each and identify the ownership thereof (both as to working interest and royalty).
3. If more than one lease of different ownership is dedicated to the well, have the interests of all owners been consolidated by communitization, unitization, force-pooling, etc?

☐ Yes ☐ No If answer is "yes," type of consolidation _____

If answer is "no," list the owners and tract descriptions which have actually been consolidated. (Use reverse side of this form if necessary.) _____

No allowable will be assigned to the well until all interests have been consolidated (by communitization, unitization, forced-pooling, or otherwise) or until a non-standard unit, eliminating such interests, has been approved by the Commission.



CERTIFICATION

I hereby certify that the information contained herein is true and complete to the best of my knowledge and belief.

Charles W. Sanders
 Name

Charles W. Sanders

Position
Vice President

Company
Petroleum Development Corp.

Date
August 4, 1977

I hereby certify that the well location shown on this plat was plotted from field notes of actual surveys made by me or under my supervision, and that the same is true and correct to the best of my knowledge and belief.

See original Plat dated April 28, 1959.

Drawn Surveyed
 Well originally:

~~Registered Professional Engineer and Licensed Surveyor~~

**Sohio Petroleum Co.
 Monterey - Federal #1**

Certificate No.

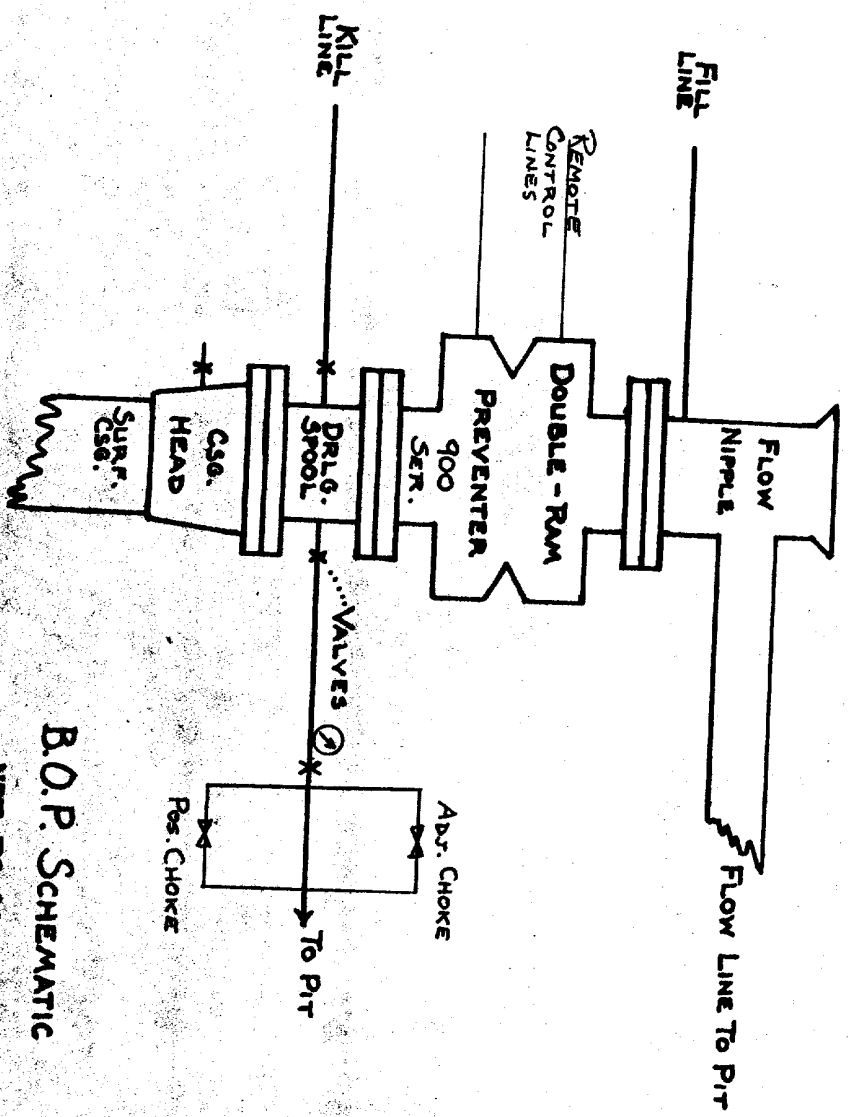
RECEIVED

AUG 16 1977

OIL CONSERVATION COMM.
HOBBS, N. M.

PETROLEUM DEVELOPMENT CORP.

HUDSON-FEDERAL #1
27-12S-30E
Chaves County, New Mexico



B.O.P. SCHEMATIC
NOT TO SCALE

1. The first part of the document is a list of names and addresses, which are arranged in a columnar fashion. The names are written in a cursive script, and the addresses are written in a more formal, printed style. The list is headed by the word "List" in a large, bold font.

2. The second part of the document is a list of names and addresses, which are arranged in a columnar fashion. The names are written in a cursive script, and the addresses are written in a more formal, printed style. The list is headed by the word "List" in a large, bold font.

3. The third part of the document is a list of names and addresses, which are arranged in a columnar fashion. The names are written in a cursive script, and the addresses are written in a more formal, printed style. The list is headed by the word "List" in a large, bold font.

4. The fourth part of the document is a list of names and addresses, which are arranged in a columnar fashion. The names are written in a cursive script, and the addresses are written in a more formal, printed style. The list is headed by the word "List" in a large, bold font.