

UNITED STATES
DEPARTMENT OF THE INTERIOR
GEOLOGICAL SURVEY

APPLICATION FOR PERMIT TO DRILL, DEEPEN, OR PLUG BACK

1a. TYPE OF WORK

DRILL ☒DEEPEN ☐PLUG BACK ☐

b. TYPE OF WELL

OIL
WELL ☒GAS
WELL ☐OTHER ☐SINGLE
ZONE ☐MULTIPLE
ZONE ☐

2. NAME OF OPERATOR

McCLELLAN OIL CORPORATION

3. ADDRESS OF OPERATOR

P. O. Box 848, Roswell, New Mexico 88201

4. LOCATION OF WELL (Report location clearly and in accordance with any State requirements.)*

At surface

1980' FSL & 1650' FEL

At proposed prod. zone

14. DISTANCE IN MILES AND DIRECTION FROM NEAREST TOWN OR POST OFFICE*

20 MILES NORTH OF LOCO HILLS

15. DISTANCE FROM PROPOSED*

LOCATION TO NEAREST
PROPERTY OR LEASE LINE, FT.
(Also to nearest drlg. unit line, if any)18. DISTANCE FROM PROPOSED LOCATION*
TO NEAREST WELL, DRILLING, COMPLETED,
OR APPLIED FOR, ON THIS LEASE, FT.

16. NO. OF ACRES IN LEASE

248 ARTESIA, OFFICE

17. NO. OF ACRES ASSIGNED
TO THIS WELL

40

19. PROPOSED DEPTH

2200'

20. ROTARY OR CABLE TOOLS

CABLE TOOLS

21. ELEVATIONS (Show whether DF, RT, GR, etc.)

SEE LOCATION PLAT

22. APPROX. DATE WORK WILL START*

MARCH 25, 1974

23.

PROPOSED CASING AND CEMENTING PROGRAM

| SIZE OF HOLE | SIZE OF CASING | WEIGHT PER FOOT | SETTING DEPTH | QUANTITY OF CEMENT |
|--------------|----------------|-----------------|---------------|--------------------|
| 14" | 10-3/4" | 28# | 30' | 20sx (CIRC) |
| *12" | 8-5/8" | 20# | 350' | 100sx |
| 8" | 4-1/2" | 11 1/2# | 2200' | 100sx |

WILL DRILL TO 2200' TO TEST QUEEN SAND. IF PRODUCTION IS INDICATED,
WILL RUN 4 1/2" CASING AND ATTEMPT COMPLETION.

*CASING WILL BE RUN IF WATER IS ENCOUNTERED.

RECEIVED

MAR 18 1974

U. S. GEOLOGICAL SURVEY
ARTESIA, NEW MEXICO

IN ABOVE SPACE DESCRIBE PROPOSED PROGRAM: If proposal is to deepen or plug back, give data on present productive zone and proposed new productive zone. If proposal is to drill or deepen directionally, give pertinent data on subsurface locations and measured and true vertical depths. Give blowout preventer program, if any.

24.

SIGNED

James J. McClellan

TITLE

OPERATOR

DATE

3/15/74

(This space for Federal or State office use)

PERMIT NO.

APPROVAL DATE

APPROVED
CONDITIONS OF APPROVAL, IF ANY:

L. L. BEEKING

TITLE

DATE

THIS APPROVAL IS RESCINDED IF OPERATIONS
ARE NOT COMMENCED WITHIN 3 MONTHS.
EXPIRES JUN 25 1974
See Instructions On Reverse Side

**NEW MEXICO OIL CONSERVATION COMMISSION
WELL LOCATION AND ACREAGE DEDICATION PLAT**

Form C-102
Supersedes C-128
Effective 1-1-65

All distances must be from the outer boundaries of the Section

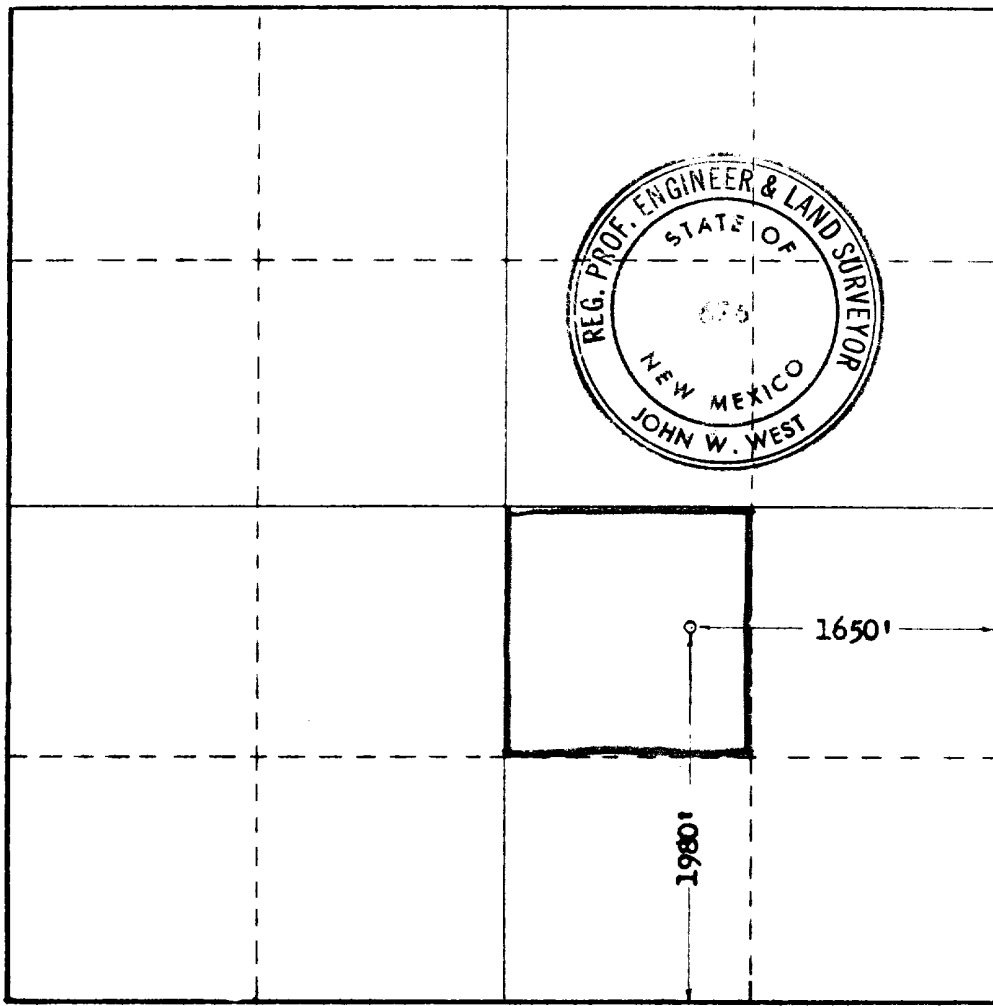
| | | | | | |
|--------------------------------------------------------------------------------------------------------------------------------|-------------------------------------------|-----------------------------|--------------------------------|-------------------------|----------------------|
| Operator McCLELLAN OIL CORPORATION | | | Lease Hope-Federal | | Well No. 2 |
| Unit Letter J | Section 17 | Township 15 South | Range 30 East | County Chaves | |
| Actual Footage Location of Well: 1980 feet from the south line and 1650 feet from the east line | | | | | |
| Ground Level Elev. | Producing Formation Tator Queen | Pool Wildcat | Dedicated Acreage 40 | | |

1. Outline the acreage dedicated to the subject well by colored pencil or hatchure marks on the plat below.
2. If more than one lease is dedicated to the well, outline each and identify the ownership thereof (both as to working interest and royalty).
3. If more than one lease of different ownership is dedicated to the well, have the interests of all owners been consolidated by communitization, unitization, force-pooling, etc?

☐ Yes ☐ No If answer is "yes," type of consolidation _____

If answer is "no," list the owners and tract descriptions which have actually been consolidated (Use reverse side of this form if necessary.) _____

No allowable will be assigned to the well until all interests have been consolidated (by communitization, unitization, forced-pooling, or otherwise) or until a non-standard unit, eliminating such interests, has been approved by the Commission.



CERTIFICATION

I hereby certify that the information contained herein is true and complete to the best of my knowledge and belief

Name John W. West
Agent

Company
McClellan Oil Corp.

Date
Mar 15, 1974

RECEIVED
MAR 18 1974
U.S. GEOLOGICAL SURVEY
ARTESIA, NEW MEXICO

Date Surveyed
Mar. 15, 1974

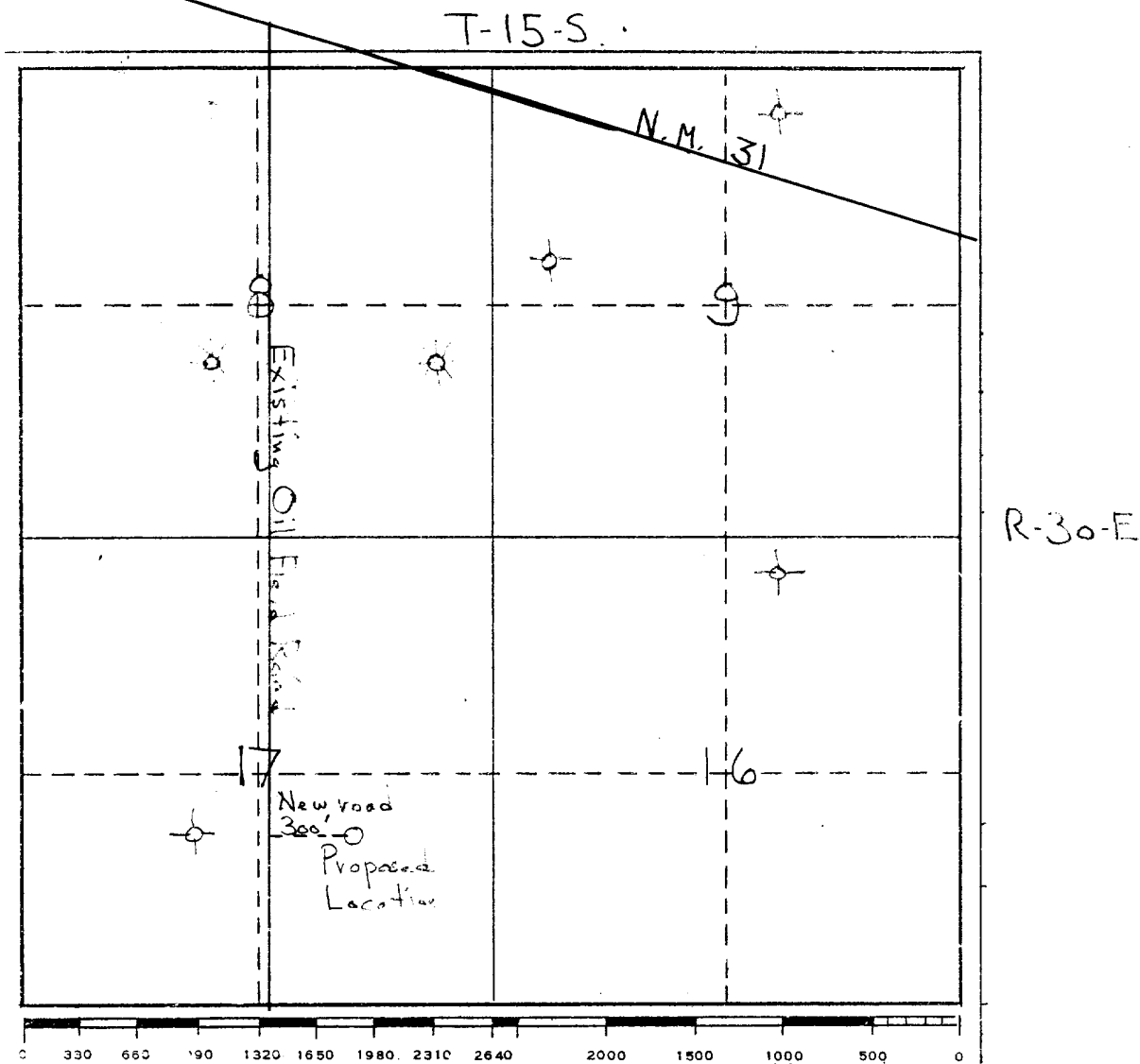
Registered Professional Engineer
and/or Land Surveyor

John W. West
Certificate No. **676**

JMC

M. J. LELLAN OIL CORPORATION
Box 848
ROSWELL, NEW MEXICO 88201

HOPE FEDERAL NO. 2



PROPOSE TO USE EXISTING ROADS, OILFIELD AND RANCH, AND TO CONSTRUCT APPROXIMATELY 300' OF NEW ROAD TO LOCATION. NO WATER EXISTS IN THIS AREA AND WILL HAVE TO BE TRUCKED IN TO LOCATION. COMBUSTIBLE MATERIAL WILL BE BURNED, NONCOMBUSTIBLE MATERIAL WILL BE BURIED WITH PIT FILLING.

AFTER COMPLETION OR ABANDONMENT, THE PIT WILL BE FILLED, THE LOCATION CLEANED, AND THE AREA RESTORED, AS MUCH AS POSSIBLE, TO ITS ORIGINAL STATE.

RECEIVED

MAR 18 1974

U. S. GEOLOGICAL SURVEY
ARTESIA, NEW MEXICO

