

OIL CONSERVATION DIVISION

STATE OF NEW MEXICO
ENERGY AND MINERALS DEPARTMENTP. O. BOX 2038
SANTA FE, NEW MEXICO 87501Form C-102
Revised 10-1-78

All distances must be from the outer boundaries of the Section.

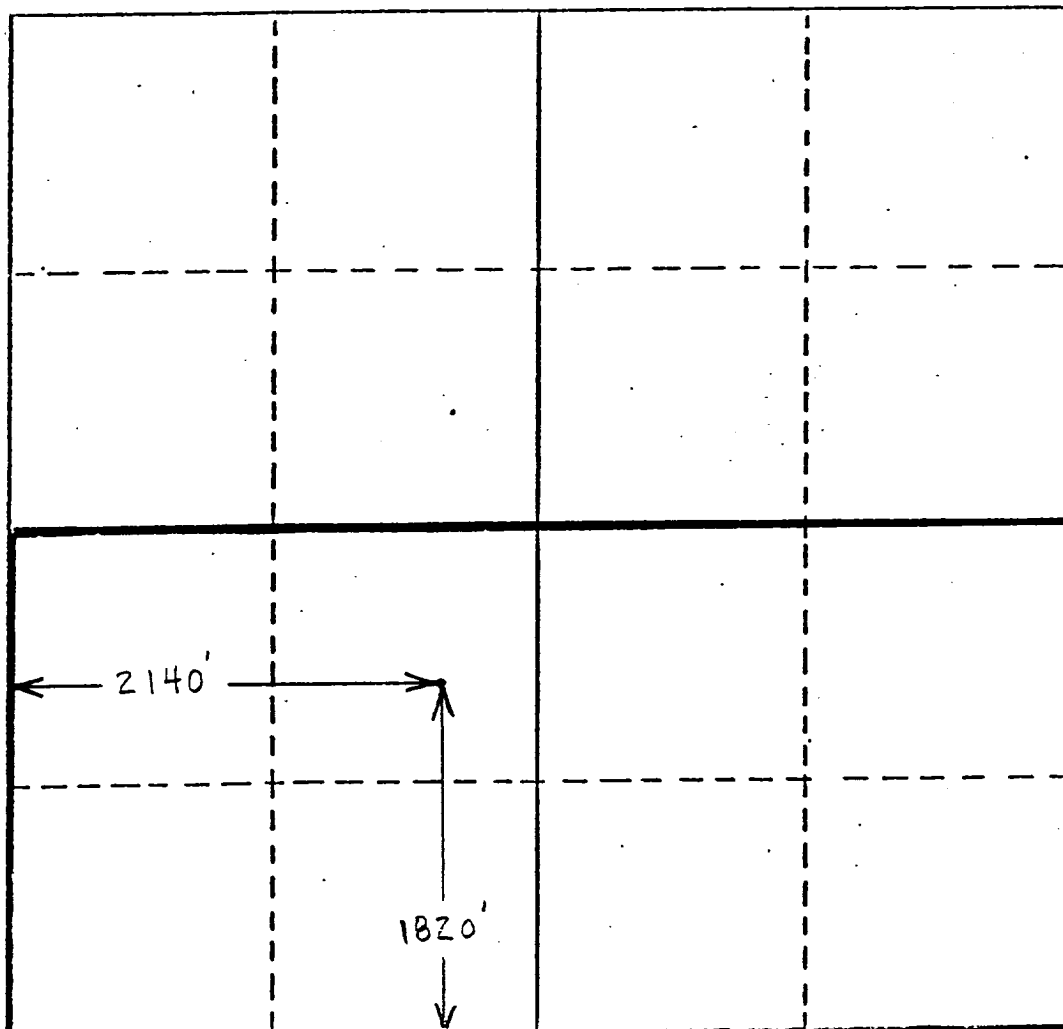
| | | | | | |
|--|--------------------------------------|-------------------------------|-----------------------------|-------------------------|--|
| Operator TEXACO Inc. | | Lease Peery Federal | | Well No. 3 | |
| Unit Letter K | Section 29 | Township 15-S | Range 30-E | County Chaves | |
| Actual Footage Location of Well: 1820 feet from the South line and 2140 feet from the West line | | | | | |
| Ground Level Elev. 3953' DF | Producing Formation Morrow | | Pool Undesignated | | Dedicated Acreage: 320 Acres |

1. Outline the acreage dedicated to the subject well by colored pencil or hachure marks on the plat below.
2. If more than one lease is dedicated to the well, outline each and identify the ownership thereof (both as to working interest and royalty).
3. If more than one lease of different ownership is dedicated to the well, have the interests of all owners been consolidated by communitization, unitization, force-pooling, etc?

☐ Yes ☐ No If answer is "yes," type of consolidation _____

If answer is "no," list the owners and tract descriptions which have actually been consolidated. (Use reverse side of this form if necessary.) _____

No allowable will be assigned to the well until all interests have been consolidated (by communitization, unitization, forced-pooling, or otherwise) or until a non-standard unit, eliminating such interests, has been approved by the Division.



CERTIFICATION

I hereby certify that the information contained herein is true and complete to the best of my knowledge and belief.

W. B. Cade

Name

W. B. Cade

Position

Dist. Operations Manager

Company

Texaco Inc.

Date

August 8, 1985

I hereby certify that the well location shown on this plat was plotted from field notes of actual surveys made by me or under my supervision, and that the same is true and correct to the best of my knowledge and belief.

Date Surveyed

Registered Professional Engineer
and/or Land Surveyor

Certificate No.

