

Santa Fe, New Mexico

WELL RECORD

Mail to District Office, Oil Conservation Commission, to which Form C-101 was sent not later than twenty days after completion of well. Follow instructions in Rules and Regulations of the Commission. Submit in QUINTUPLICATE. If State Land submit 6 Copies

AREA 640 ACRES
LOCATE WELL CORRECTLY

Texas Pacific Coal & Oil Company
(Company or Operator)

New Mexico State "N" A/c 1
(Lease)

Well No. 2, in SE ¼ of NE ¼, of Sec. 4, T. 15-S, R. 31-E, NMPM.
Underground Pool. Chaves County.

Well is 1650 feet from North line and 990 feet from East line
of Section 4. If State Land the Oil and Gas Lease No. is N.M. 54-366

Drilling Commenced.....**August 19**....., 19..**55**... Drilling was Completed.....**September 11**....., 19..**55**

Name of Drilling Contractor..... **Cactus Drilling Company**

Address..... Hobbs, New Mexico

Elevation above sea level at Top of Tubing Head.....4424..... The information given is to be kept confidential until
....., 19.....

No. 1, from.....to.....

No. 2, from.....to.....

No. 3, from.....to.....

No. 4, from.....to.....

No. 5, from.....to.....

No. 6, from.....to.....

Include data on rate of water inflow and elevation to which water rose in hole.

No. 1, from.....to.....feet.

No. 2, from.....to.....feet.

No. 3, from.....to.....feet.

No. 4, from.....to.....feet.

SIZE	WEIGHT PER FOOT	NEW OR USED	AMOUNT	KIND OF SHOE	CUT AND PULLED FROM	PERFORATIONS	PURPOSE
13 3/8	40#	New	297	Baker			
8 5/8	24#	New	1362	Baker			

MUDGING AND CEMENTING RECORD						
SIZE OF HOLE	SIZE OF CASING	WHERE SET	NO. BAGS OF CEMENT	METHOD USED	MUD GRAVITY	AMOUNT OF MUD USED
17"	13 3/8	297	100			
11 1/2"	8 5/8	1362				

(Record the Process used, No. of Qts. or Gals. used, interval treated or shot.)

Result of Production Stimulation

Depth Cleaned Out.

RECORD OF DRILL-STEM AND SPECIAL TESTS

If drill-stem or other special tests or deviation surveys were made, submit report on separate sheet and attach hereto

TOOLS USED

Rotary tools were used from 0 feet to 1362 feet, and from feet to feet.
Cable tools were used from 1362 feet to 3206 feet, and from feet to feet.

PRODUCTION

Put to Producing, 19.

OIL WELL: The production during the first 24 hours was barrels of liquid of which % was oil; % was emulsion; % water; and % was sediment. A.P.I. Gravity.

GAS WELL: The production during the first 24 hours was M.C.F. plus barrels of liquid Hydrocarbon. Shut in Pressure lbs.

Length of Time Shut in

PLEASE INDICATE BELOW FORMATION TOPS (IN CONFORMANCE WITH GEOGRAPHICAL SECTION OF STATE):

Southeastern New Mexico		Northwestern New Mexico	
T. Anhy. 1354	T. Devonian	T. Ojo Alamo	
T. Salt 1480	T. Silurian	T. Kirtland-Fruitland	
B. Salt 2197	T. Montoya	T. Farmington	
T. Yates 2347	T. Simpson	T. Pictured Cliffs	
T. 7 Rivers 2480	T. McKee	T. Menefee	
T. Queen 3142	T. Ellenburger	T. Point Lookout	
T. Grayburg	T. Gr. Wash	T. Mancos	
T. San Andres	T. Granite	T. Dakota	
T. Glorieta	T.	T. Morrison	
T. Drinkard	T.	T. Penn	
T. Tubbs	T.	T.	
T. Abo	T.	T.	
T. Penn	T.	T.	
T. Miss	T.	T.	

FORMATION RECORD

From	To	Thickness in Feet	Formation	From	To	Thickness in Feet	Formation
0	282	282	Caliche & Sand				
282	1360	1078	Red Sand & Shale				
1360	1410	50	Anhydrite				
1410	1430	20	Shale				
1430	1445	15	Anhydrite & Shale				
1445	1465	20	Red Shale				
1465	1480	15	Anhydrite				
1480	2190	1710	Salt				
2190	2230	30	Broken Anhydrite				
2230	2260	30	Shale				
2260	2400	140	Anhydrite & Salt				
2400	2430	30	Shale				
2430	2650	120	Anhydrite				
2650	2930	280	Anhydrite & Shale				
2930	3148	218	Anhydrite				
3148	3180	32	Sand, Anhydrite & Shale				
3180	3206	26	Sand & Anhydrite TD				

ATTACH SEPARATE SHEET IF ADDITIONAL SPACE IS NEEDED

I hereby swear or affirm that the information given herewith is a complete and correct record of the well and all work done on it so far as can be determined from available records.

October 26, 1955 (Date)
Company or Operator Texas Pacific Coal & Oil Company Address P. O. Box 1688, Hobbes, New Mexico
Name Position or Title District Engineer

DUPLICATE

NEW MEXICO OIL CONSERVATION COMMISSION
Santa Fe, New Mexico

MISCELLANEOUS NOTICES

Submit this notice in TRIPLICATE to the District Office, Oil Conservation Commission, before the work specified is to begin. A copy will be returned to the sender on which will be given the approval, with any modifications considered advisable, or the rejection by the Commission or agent, of the plan submitted. The plan as approved should be followed, and work should not begin until approval is obtained. See additional instructions in the Rules and Regulations of the Commission.

Indicate Nature of Notice by Checking Below

NOTICE OF INTENTION TO CHANGE PLANS		NOTICE OF INTENTION TO TEMPORARILY ABANDON WELL		NOTICE OF INTENTION TO DRILL DEEPER	
NOTICE OF INTENTION TO PLUG WELL	X	NOTICE OF INTENTION TO PLUG BACK		NOTICE OF INTENTION TO SET LINER	
NOTICE OF INTENTION TO SQUEEZE		NOTICE OF INTENTION TO ACIDIZE		NOTICE OF INTENTION TO SHOOT (Nitro)	
NOTICE OF INTENTION TO GUN PERFORATE		NOTICE OF INTENTION (OTHER)		NOTICE OF INTENTION (OTHER)	

OIL CONSERVATION COMMISSION
SANTA FE, NEW MEXICO

Hobbs, New Mexico October 12, 1955
(Place) (Date)

Gentlemen:

Following is a Notice of Intention to do certain work as described below at the New Mexico State "M"

Texas Pacific Coal and Oil Company Well No. 2 in H (Unit)
(Company or Operator)
SE 1/4 NE 1/4 of Sec. 4, T. 15-S, R. 31-E, NMPM, Undesignated Pool
(40-acre Subdivision)
Chaves County.

FULL DETAILS OF PROPOSED PLAN OF WORK
(FOLLOW INSTRUCTIONS IN THE RULES AND REGULATIONS)

Spot 30 sxs cement plug 3206'-3076' (130')
Load hole with mud up to 325'.
Spot 20 sxs cement plug at bottom of 13 3/8"
esng. 325-275' (50')
Spot 10 sx cement plug with 4" x 6' pipe
marker at surface. Clean location.

Approved Except as follows: 18-24

THE COMMISSION MUST BE NOTIFIED 24
HOURS PRIOR TO THE BEGINNING OF
PLUGGING OPERATIONS FOR THE C-103
TO BE APPROVED.

Approved
OIL CONSERVATION COMMISSION

By

Title

Texas Pacific Coal & Oil Company
Company of Operator

By

Position District Field Foreman
Send Communications regarding well to:

Name Texas Pacific Coal & Oil Company

Address P. O. Box 1688, Hobbs, New Mexico

NEW MEXICO OIL CONSERVATION COMMISSION

MISCELLANEOUS REPORTS ON WELLS

(Submit to appropriate District Office as per Commission Rule 1106)

COMPANY Texas Pacific Coal & Oil Company P. O. Box 1688 Hobbs, New Mexico
(Address)LEASE State "N" WELL NO. 2 UNIT H S 4 T 15-S R 31-EDATE WORK PERFORMED September 21, 1955 POOL UndesignatedThis is a Report of: (Check appropriate block) ☒ Results of Test of Casing Shut-off☐ Beginning Drilling Operations☐ Remedial Work☐ Plugging☐ Other _____

Detailed account of work done, nature and quantity of materials used and results obtained.

Well was spudded September 19, 1955 to a T.D. of 305'.
There was 297' of 13 3/8"-48#-seamless H-40 casing
run and set at 305' with 300 sacks of a regular type
cement. Plug was pumped down at 5:30 a.m., September
20, 1955. The casing was tested with 1000# for 30
minutes before and after drilling the plug.

FILL IN BELOW FOR REMEDIAL WORK REPORTS ONLY

Original Well Data:

DF Elev. _____ TD _____ PBD _____ Prod. Int. _____ Compl Date _____

Tbng. Dia _____ Tbng Depth _____ Oil String Dia _____ Oil String Depth _____

Perf Interval (s) _____

Open Hole Interval _____ Producing Formation (s) _____

RESULTS OF WORKOVER:

BEFORE

AFTER

Date of Test

Oil Production, bbls. per day

Gas Production, Mcf per day

Water Production, bbls. per day

Gas-Oil Ratio, cu. ft. per bbl.

Gas Well Potential, Mcf per day

Witnessed by _____

(Company)

OIL CONSERVATION COMMISSION

I hereby certify that the information given
above is true and complete to the best of
my knowledge.

Name

Name

Title

Position

Date

Company

Engineer DistrictDistrict Field ForemanTexas Pacific Coal & Oil Company

NEW MEXICO OIL CONSERVATION COMMISSION
Santa Fe, New Mexico

NOTICE OF INTENTION TO DRILL OR RECOMPLETE

Notice must be given to the District Office of the Oil Conservation Commission and approved before drilling or recompletion begins. If changes in the proposed plan are considered advisable, a copy of this notice showing such changes will be returned to the sender. Submit this notice in QUINTUPPLICATE. One copy will be returned following approval. See additional instructions in Rules and Regulations of the Commission.

Fort Worth 1, Texas

September 12, 1955

(Place)

(Date)

OIL CONSERVATION COMMISSION
SANTA FE, NEW MEXICO

Gentlemen:

You are hereby notified that it is our intention to commence the (Drilling) ~~Recompletion~~ of a well to be known as
TEXAS PACIFIC COAL AND OIL COMPANY

(Company or Operator)

State of New Mexico

(Lease)

Well No. **2**, in **SW** The well is

(Unit)

located **1650** feet from the **North** line and **990** feet from the **East** line of Section **4**, T. **15-S**, R. **31-E**, NMPM.

(GIVE LOCATION FROM SECTION LINE)

~~Undesignated~~

Pool,

Chaves

County

If State Land the Oil and Gas Lease is No. **NM - 54 - 366**

If patented land the owner is

Address

We propose to drill well with drilling equipment as follows: **Rotary Tools to 1200'**
and Cable Tools to Total Depth

The status of plugging bond is **Required Bond on File**

Drilling Contractor **Cactus Drilling Company**

We intend to complete this well in the **Queen** formation at an approximate depth of **3,200'** feet.

CASING PROGRAM

We propose to use the following strings of Casing and to cement them as indicated:

Size of Hole	Size of Casing	Weight per Foot	New or Second Hand	Depth	Sacks Cement
17"	13-3/8"	48#	New	300'	Circulated
13"	8-5/8"	32#	"	1400'	To Be Pulled
8-3/4"	5-1/2"	14#	"	3200'	150

If changes in the above plans become advisable we will notify you immediately.

ADDITIONAL INFORMATION (If recompletion give full details of proposed plan of work.)

SEP 14 1955

Approved....., 19.....
Except as follows:

OIL CONSERVATION COMMISSION

By.....

Title **Engineer District I**

Sincerely yours,

TEXAS PACIFIC COAL AND OIL COMPANY
(Company or Operator)

By.....

Position **Manager of Production**

Send Communications regarding well to

Name **J. R. Teague**

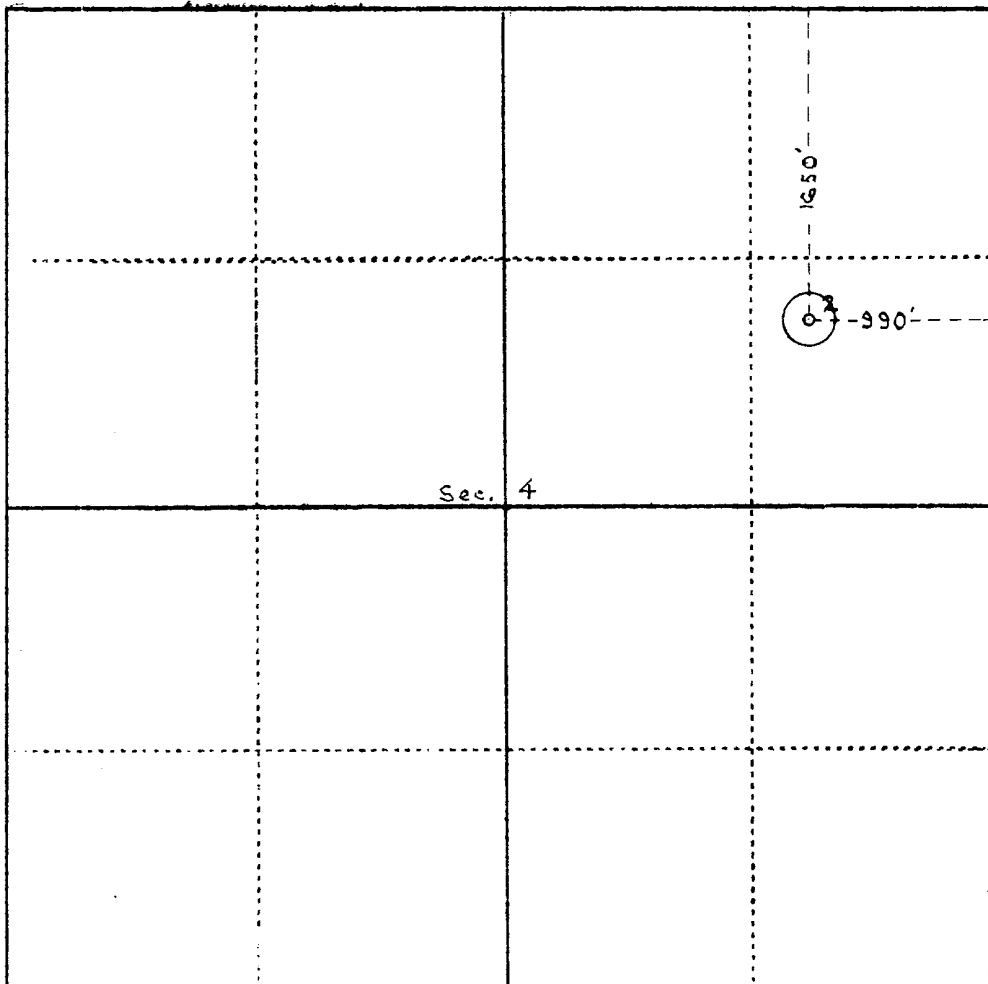
Address **P. O. Box 2110**

Fort Worth 1, Texas

TEX PACIFIC COAL AND OIL COMPANY

Section No. 4 Township No. 15-S Range No. 31-E
State NEW MEXICO County CHAVES
RECORDED OFFICE 000
SEP 13 AM 11:19

Scale: 1 inch equals 1,000 feet



Lessor State of New Mexico "M" Lease No. NM-54-366