

NEW MEXICO OIL CONSERVATION COMMISSION
Santa Fe, New Mexico

NOTICE OF INTENTION TO DRILL OR RECOMPLETE

Notice must be given to the District Office of the Oil Conservation Commission and approval obtained before drilling or recompletion begins. If changes in the proposed plan are considered advisable, a copy of this notice showing such changes will be returned to the sender. Submit this notice in QUINTUPLICATE. One copy will be returned following approval. See additional instructions in Rules and Regulations of the Commission.

Fort Worth 1, Texas

(Place)

February 24, 1955

(Date)

OIL CONSERVATION COMMISSION
SANTA FE, NEW MEXICO

Gentlemen:

You are hereby notified that it is our intention to commence the (Drilling) (~~Recompletion~~) of a well to be known as

TEXAS PACIFIC COAL AND OIL COMPANY

(Company or Operator)

State of New Mexico "T^m Ac. 2

(Lease)

Well No. 1

in

1/4

(Unit)

The well is

located 1980' feet from the South line and 660' feet from the

West

line of Section 20

T. 15-S

R. 31-E

NMPM.

(GIVE LOCATION FROM SECTION LINE)

Driskoy Queen

Pool,

Chaves

County

If State Land the Oil and Gas Lease is No. 301

If patented land the owner is

Address

We propose to drill well with drilling equipment as follows: Rotary Tools to 1200'

and Cable Tools to Total Depth

The status of plugging bond is Required Bond on File

Drilling Contractor Cactus Drilling Company

We intend to complete this well in the Queen

formation at an approximate depth of 3,200' feet.

CASING PROGRAM

We propose to use the following strings of Casing and to cement them as indicated:

Size of Hole	Size of Casing	Weight per Foot	New or Second Hand	Depth	Sacks Cement
17"	13-3/8"	48#	New	300'	Circulated
13"	8-5/8"	32#	"	1200'	To Be Pulled
8-3/4"	5-1/2"	14#	"	3200'	150

If changes in the above plans become advisable we will notify you immediately.

ADDITIONAL INFORMATION (If recompletion give full details of proposed plan of work.)

Approved _____, 19_____
Except as follows:

OIL CONSERVATION COMMISSION

By *A. G. Stanley*

Title _____

Sincerely yours,

TEXAS PACIFIC COAL AND OIL COMPANY

(Company or Operator)

By *J. R. Teague*

Position Manager of Production

Send Communications regarding well to

Name J. R. Teague

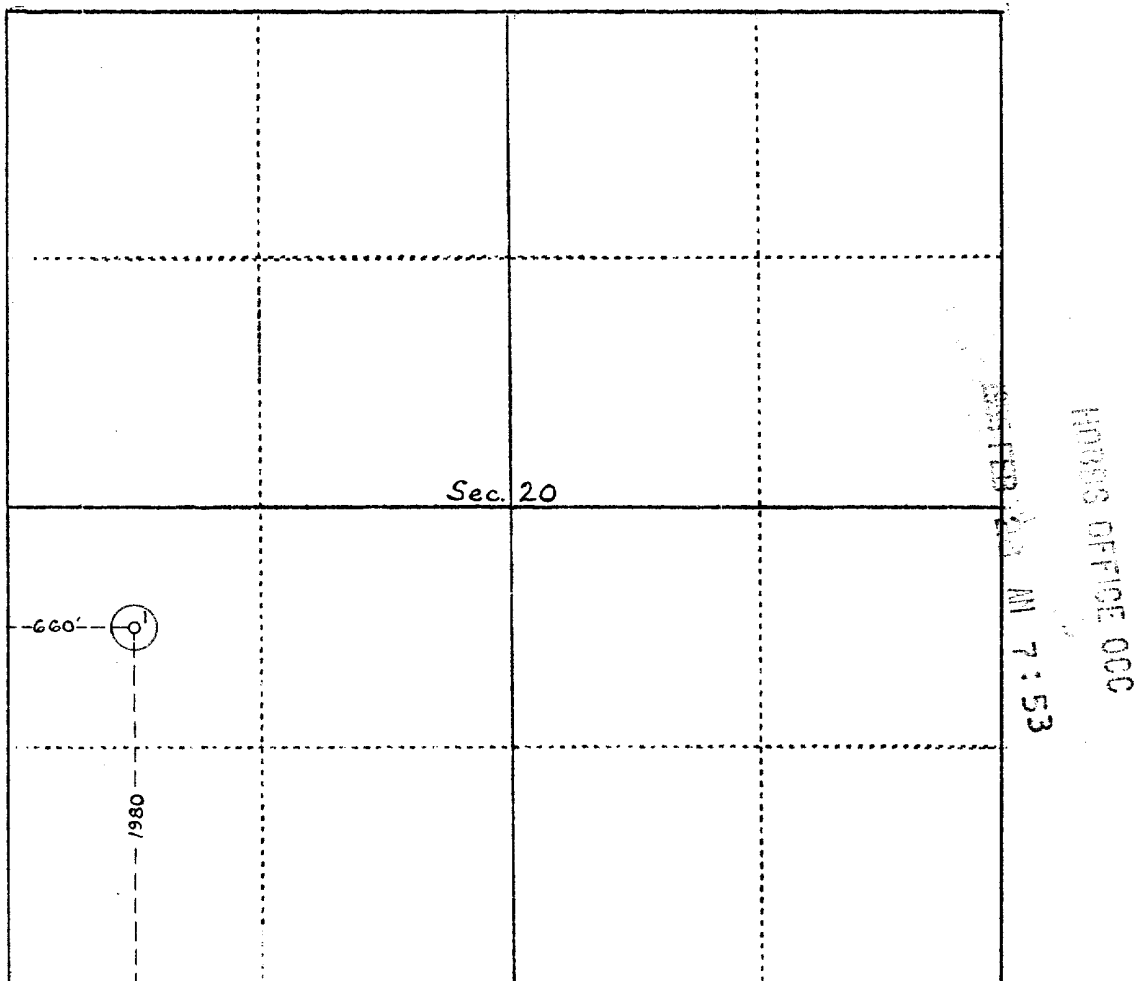
Address P. O. Box 2110, Fort Worth 1, Texas

TEXAS PACIFIC COAL AND OIL COMPANY

Section No. 20 Township No. 15-S Range No. 31-E

State NEW MEXICO County CHAVES

Scale: 1 inch equals 1,000 feet



Lessor STATE OF NEW MEXICO I, Acct.-2 Lease No. MM-301

