

NEW MEXICO OIL CONSERVATION COMMISSION

Santa Fe, New Mexico

NOTICE OF INTENTION TO DRILL

RECEIVED
JUL 16 1947
HOSES OFFICE

Notice must be given to the Oil Conservation Commission or its proper agent and approved before drilling begins. If changes in the proposed plan are considered advisable, a copy of this notice showing such changes will be returned to the sender. Submit this notice in triplicate. One copy will be returned following approval. See additional instructions in Rules and Regulations of the Commission.

Artesia, N.M.

July 1, 1947

OIL CONSERVATION COMMISSION,
Santa Fe, New Mexico,

Gentlemen:

You are hereby notified that it is our intention to commence the drilling of a well to be known as

A.K. Polis, Jr.

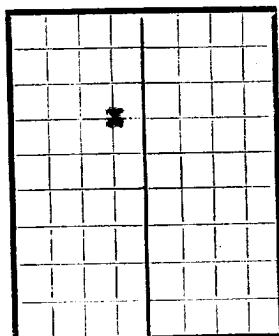
State A

Well No. 1 in Santa Fe

Company or Operator

Lease

of Sec. 12, T. 13 S., R. 31 E., N. M., P. M., Caprock Field, Chaves County.



AREA 640 ACRES

LOCATE WELL CORRECTLY

approximately 3025. Cable tools to Total depth

The status of a bond for this well in conformance with Rule 39 of the General Rules and Regulations of the Commission is as follows: \$10,000 Blanket Bond accompanying this form.

We propose to use the following strings of casing and to land or cement them as indicated:

Size of Hole	Size of Casing	Weight Per Foot	New or Second Hand	Depth	Landed or Cemented	Sacks Cement
10 3/4	9 5/8	29 #	S.H.	250	Cemented	100
8 5/8	7"	17 #	S.H.	3025	Cemented	600

If changes in the above plan become advisable we will notify you before cementing or landing casing. We estimate that the first productive oil or gas sand should occur at a depth of about 3034 feet.

Additional information:

JUL 15 1947

Approved _____, 19____

except as follows:

Sincerely yours,

A.K. Polis, Jr.

Company or Operator

By W.U. Paul W.U. Paul

Position Agent

Send communications regarding well to

Name W.U. Paul

Address 601, West Quay
Artesia, New Mexico

OIL CONSERVATION COMMISSION,

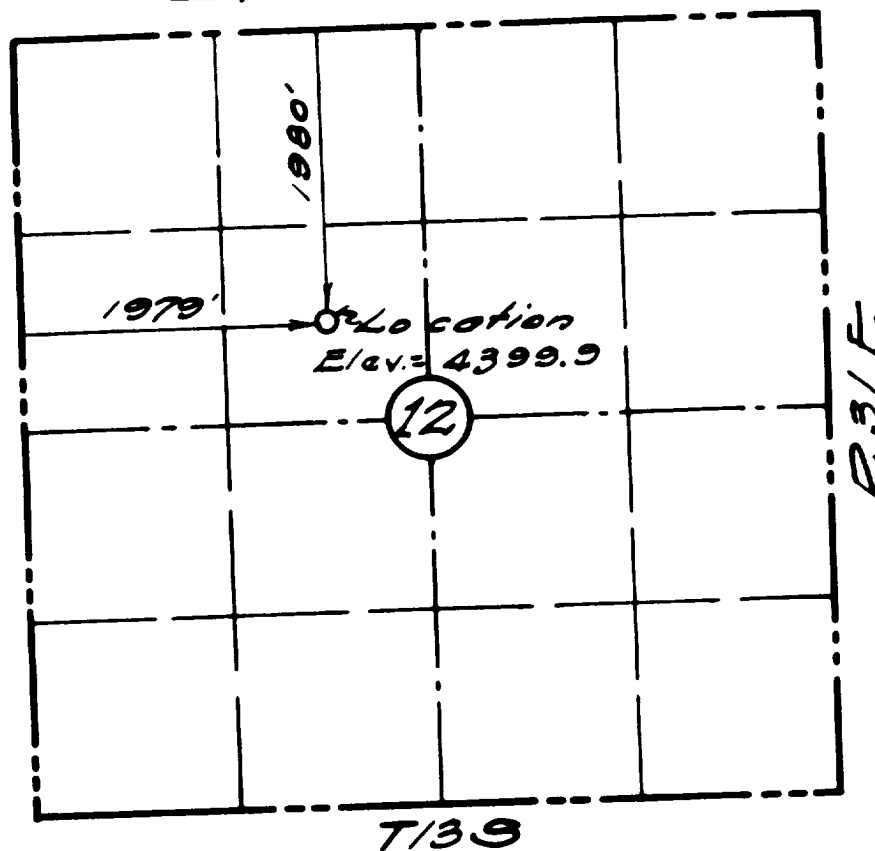
By

Title

LOCATION
FOR
A.K. POLLS

STATE A-1

1980 Ft. From North
1979 Ft. From West



CERTIFICATE

I, Clarence E. Fischbeck, Registered Professional Engineer of the State of New Mexico, hereby certify that I made the Location as plotted and that said plot is a true & correct representation of the field notes of the actual survey made by me on the ground and is true & correct to the best of my knowledge & belief.

Clarence E. Fischbeck
Consulting Engineer.