

NEW MEXICO OIL CONSERVATION COMMISSION  
Santa Fe, New Mexico

## NOTICE OF INTENTION TO DRILL OR RECOMPLETE

Notice must be given to the District Office of the Oil Conservation Commission and approval obtained before drilling or recompletion begins. If changes in the proposed plan are considered advisable, a copy of this notice showing such changes will be returned to the sender. Submit this notice in **QUINTUPLICATE**. One copy will be returned following approval. See additional instructions in Rules and Regulations of the Commission.

DALLAS, TEXAS  
(Place)APRIL 4, 1955  
(Date)OIL CONSERVATION COMMISSION  
SANTA FE, NEW MEXICO

Gentlemen:

You are hereby notified that it is our intention to commence the (Drilling) (~~XXXXXXXX~~) of a well to be known as

LANDA OIL COMPANY

(Company or Operator)

STATE

(Lease)

Well No. 1-22

(Unit)

located 1980 feet from the EAST line and 660 feet from the

SOUTH

Line of Section 22, T. 13 S, R. 31 E, NMPM.

(GIVE LOCATION FROM SECTION LINE) ~~DRICKET~~ Pool, CHAVES County

E 4191

If State Land the Oil and Gas Lease is No.

If patented land the owner is

Address

We propose to drill well with drilling equipment as follows:

ROTARY

The status of plugging bond is POSTED

Drilling Contractor CAMDEN DRILLING CO.  
FORT WORTH, TEXAS

We intend to complete this well in the QUEEN formation at an approximate depth of 3100 feet.

## CASING PROGRAM

We propose to use the following strings of Casing and to cement them as indicated:

Size of Hole	Size of Casing	Weight per Foot	New or Second Hand	Depth	Sacks Cement
12 1/8	8 5/8	24	NEW	300	150
7 7/8	5 1/2	15.5	NEW	3100	100

If changes in the above plans become advisable we will notify you immediately.

ADDITIONAL INFORMATION (If recompletion give full details of proposed plan of work.)

Approved....., 19.....  
Except as follows:By *S. G. Stanley* OIL CONSERVATION COMMISSION

Title

Sincerely yours,

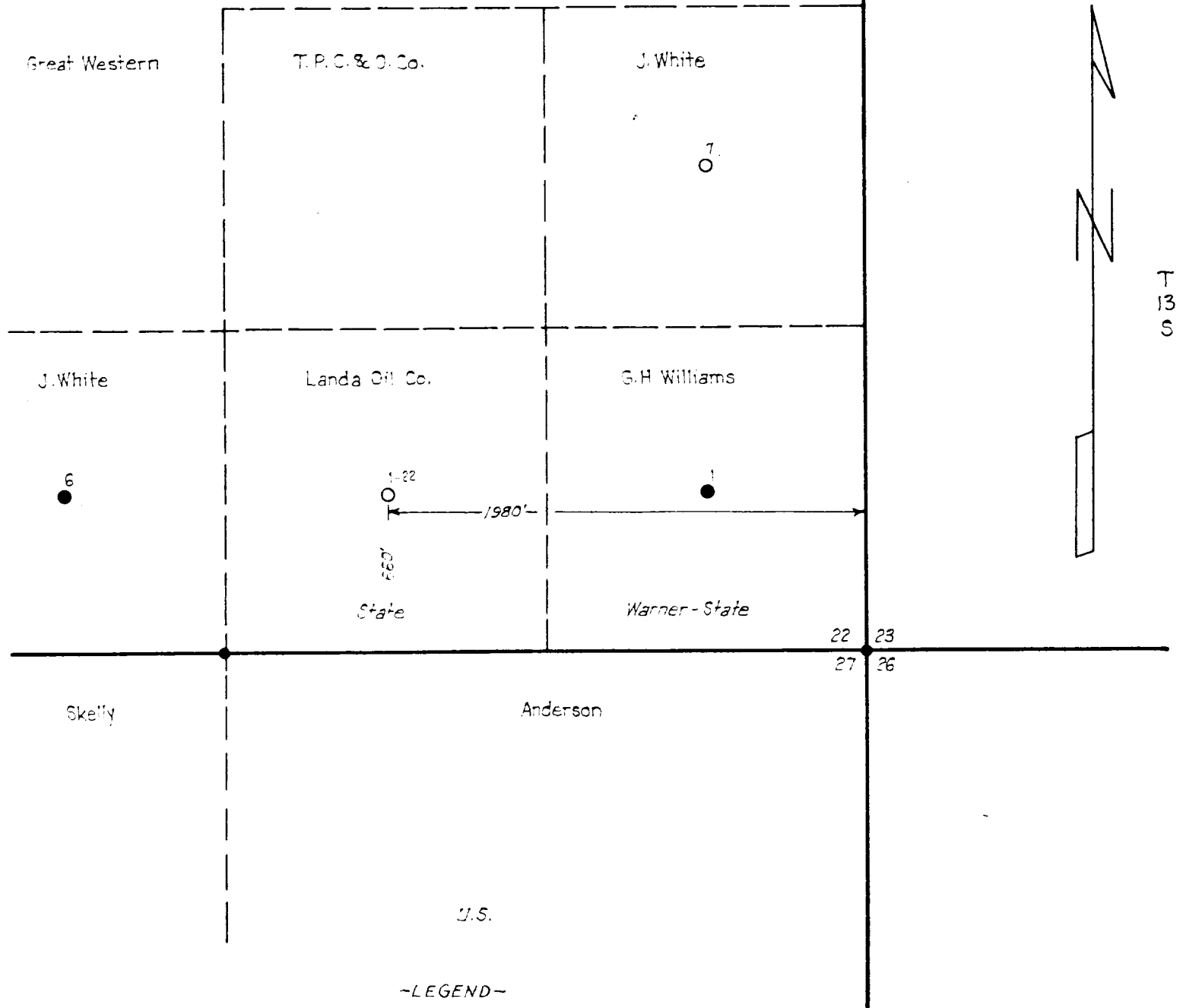
LANDA OIL COMPANY  
(Company or Operator)By *Robert J. Pool*

Position ENGINEER

Send Communications regarding well to

Name LANDA OIL COMPANY  
Address 5738 N. CENTRAL EXPRESSWAY  
DALLAS, TEXAS

R 31 E



~LEGEND~

● U S General Land Office Corners

I, Clifford D. Cool, certify that this survey was made by me on the ground and that this plat is true and correct.  
March 28, 1955.

*Clifford D. Cool*  
\_\_\_\_\_  
Licensed State Land Surveyor  
Midland County, Texas.

COOL & STILLEY

LOCATION PLAT  
LANDA OIL COMPANY  
STATE, LSE.  
SW. 40 AC. OF SE 1/4, SEC. 22  
T13S-R31E  
CHAVES COUNTY, N.M.  
Scale: 1" = 600'