

Form C-110
Revised 7/1/55

CERTIFICATE OF COMPLIANCE AND AUTHORIZATION
TO TRANSPORT OIL AND NATURAL GAS

South Caprock
Queen Unit
Tract 54

Well No. 9-28 Unit Letter I S 28 T 14-S R 31-E Pool Caprock Queen

Captures Que en

If well produces oil or condensate, give location of tanks: Unit 0 S 22 T 14 R 31-2

Authorized Transporter of Oil or Condensate **Texas-New Mexico Pipe Line Company**

Authorized Transporter of Gas None

If Gas is not being sold, give reasons and also explain its present disposition:
No market - gas being flared.

Change in Transporter of (Check One): Oil () Dry Gas () C'head () Condensate ()

Remarks: _____ (Give explanation below)

Change effective: DEC 1 1960

Executed this the day of NOV 29 1960 19

By V. J. Manner

Approved 19

Title	Unit Superintendent
-------	---------------------

~~OIL CONSERVATION COMMISSION~~

Company Union Oil Company of California

By ~~_____~~

Address **205 East Washington**

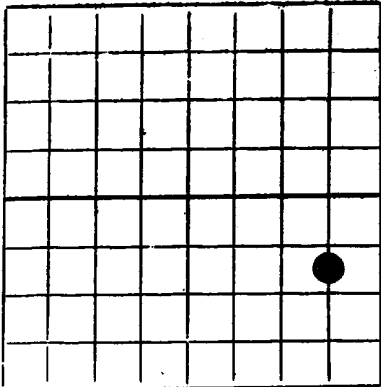
Title ~~SECRET~~ ~~CONFIDENTIAL~~

Lovington, New Mexico

NEW MEXICO OIL CONSERVATION COMMISSION
Santa Fe, New Mexico

WELL RECORD

Mail to District Office, Oil Conservation Commission, to which Form C-101 was sent not later than twenty days after completion of well. Follow instructions in Rules and Regulations of the Commission. Submit in QUINTUPLICATE. If State Land submit 6 Copies



AREA 640 ACRES
LOCATE WELL CORRECTLY

Union Oil Company of California
(Company or Operator)

H. A. Lindley
(Lease)

Well No. 4-28, in NE 1/4 of NE 1/4, of Sec. 28, T. 14-S, R. 31-E, NMPM.

Caprock Queen Pool, Chaves County.

Well is 1670 feet from South line and 660 feet from East line of Section 28. If State Land the Oil and Gas Lease No. is -

Drilling Commenced June 3, 1957. Drilling was Completed June 8, 1957

Name of Drilling Contractor Lawless Drilling Company

Address Box 3182, Odessa, Texas

Elevation above sea level at Top of Tubing Head 4316'. The information given is to be kept confidential until - , 19--

OIL SANDS OR ZONES

No. 1, from 3013' to 3016' No. 4, from - to -

No. 2, from - to - No. 5, from - to -

No. 3, from - to - No. 6, from - to -

IMPORTANT WATER SANDS

Include data on rate of water inflow and elevation to which water rose in hole.

No. 1, from H to - feet.

No. 2, from 0 to - feet.

No. 3, from H to - feet.

No. 4, from - to - feet.

CASING RECORD

SIZE	WEIGHT PER FOOT	NEW OR USED	AMOUNT	KIND OF SHOE	CUT AND PULLED FROM	PERFORATIONS	PURPOSE
8-5/8"	24#	New	184.73'	Guide shoe	-	-	Surface casing
5-1/2"	14# & 15.5#	New	3024.90'	Guide shoe	-	3013 - 3016	Production casing
2" EUE	4.7#	New	2977.30'	-	-	-	Tag. string

MUDDING AND CEMENTING RECORD

SIZE OF HOLE	SIZE OF CASING	WHERE SET	NO. SACKS OF CEMENT	METHOD USED	MUD GRAVITY	AMOUNT OF MUD USED
11"	8-5/8"	199.75'	125 v/4# gal	P & P	-	-
7-7/8"	5-1/2"	3037.00'	175 v/4# gal	P & P	-	-
			& 175 cu.ft. Slurry-cement			

RECORD OF PRODUCTION AND STIMULATION

(Record the Process used, No. of Qts. or Gals. used, interval treated or shot.)

Perforated 5-1/2" casing 3013-3016' with 15 holes. Treated perfs. with 60 barrels of oil at 1-1/4 barrels per minute at 2800#.

Result of Production Stimulation. Shooked well clean after treating. Ran pump and rods. Started pumping for test. Pumped 14.0 barrels oil in 24 hours plus 46.0 barrels water.

Depth Cleaned Out

CORD OF DRILL-STEM AND SPECIAL T

If drill-stem or other special tests or deviation surveys were made, submit report on separate sheet and attach hereto

TOOLS USED

Rotary tools were used from Zero feet to 3038 feet, and from - feet to - feet.
Cable tools were used from - feet to - feet, and from - feet to - feet.

PRODUCTION

Put to Producing July 18, 19 57

OIL WELL: The production during the first 24 hours was 69.0 barrels of liquid of which 23.3 % was
was oil; - % was emulsion; 76.7 % water; and - % was sediment. A.P.I.
Gravity 35.0°

GAS WELL: The production during the first 24 hours was - M.C.F. plus - barrels of
liquid Hydrocarbon. Shut in Pressure - lbs.
Length of Time Shut in -

PLEASE INDICATE BELOW FORMATION TOPS (IN CONFORMANCE WITH GEOGRAPHICAL SECTION OF STATE):

Southeastern New Mexico

Northwestern New Mexico

T. Anhy.	<u>1290</u>	T. Devonian		T. Ojo Alamo	
T. Salt.	<u>1352</u>	T. Silurian		T. Kirtland-Fruitland	
B. Salt.	<u>2062</u>	T. Montoya		T. Farmington	
T. Yates	<u>2225</u>	T. Simpson		T. Pictured Cliffs	
T. 7 Rivers	<u>2360</u>	T. McKee		T. Menefee	
T. Queen	<u>3013</u>	T. Ellenburger		T. Point Lookout	
T. Grayburg		T. Gr. Wash		T. Mancos	
T. San Andres		T. Granite		T. Dakota	
T. Glorieta		T.		T. Morrison	
T. Drinkard		T.		T. Penn	
T. Tubbs		T.		T.	
T. Abo		T.		T.	
T. Penn		T.		T.	
T. Miss		T.		T.	

FORMATION RECORD

From	To	Thickness in Feet	Formation	From	To	Thickness in Feet	Formation
0	146	146	Sand and caliche				
146	1290	1104	Red beds				
1290	1352	102	Anhydrite				
1352	2062	710	Salt and anhydrite				
2062	2225	163	Anhydrite				
2225	2360	135	Sand and anhydrite				
2360	2995	635	Anhydrite				
2995	3038	43	Sand and anhydrite				

ATTACH SEPARATE SHEET IF ADDITIONAL SPACE IS NEEDED

I hereby swear or affirm that the information given herewith is a complete and correct record of the well and all work done on it so far as can be determined from available records.

July 22, 1957 (Date)
Company or Operator Union Oil Company of California Address 619 W. Texas Ave., Midland, Texas
Name R. W. Garrison Jr. Position or Title Drilling Supt.