

**NEW MEXICO OIL CONSERVATION COMMISSION
WELL LOCATION AND ACREAGE DEDICATION PLAT**

Form C-102
Supersedes C-128
Effective 1-1-65

All distances must be from the outer boundaries of the Section.

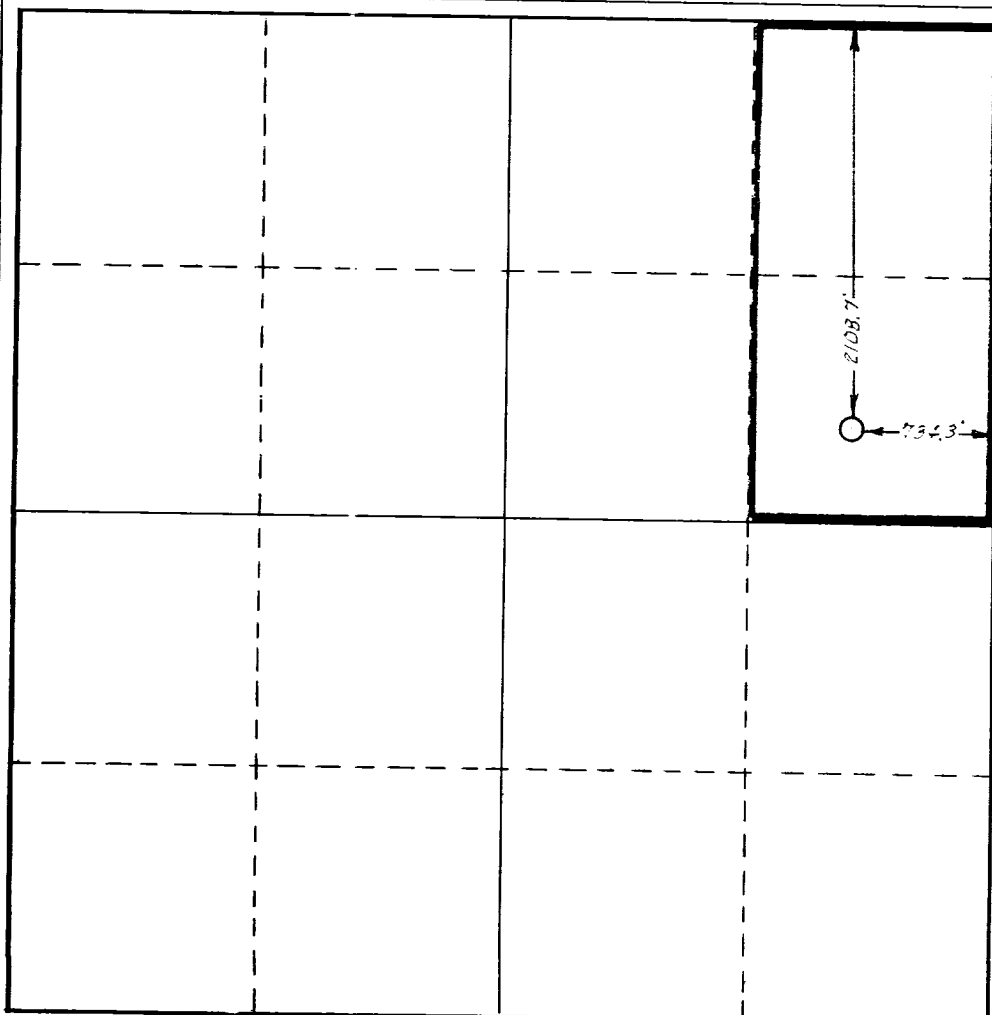
Operator Shell Oil Company			Lease James-Federal		Well No. 2
Unit Letter H	Section 24	Township 8S	Range 32E	County Chaves	
Actual Footage Location of Well: 2108.7 feet from the north line and 734.3 feet from the east line					
Ground Level Elev. 4423'	Producing Formation Pennsylvanian		Pool Tobac-Pennsylvanian		Dedicated Acreage: 80 Acres

1. Outline the acreage dedicated to the subject well by colored pencil or hachure marks on the plat below.
2. If more than one lease is dedicated to the well, outline each and identify the ownership thereof (both as to working interest and royalty).
3. If more than one lease of different ownership is dedicated to the well, have the interests of all owners been consolidated by communitization, unitization, force-pooling, etc?

☐ Yes ☐ No If answer is "yes," type of consolidation _____

If answer is "no," list the owners and tract descriptions which have actually been consolidated. (Use reverse side of this form if necessary.) _____

No allowable will be assigned to the well until all interests have been consolidated (by communitization, unitization, forced-pooling, or otherwise) or until a non-standard unit, eliminating such interests, has been approved by the Commission.



CERTIFICATION

I hereby certify that the information contained herein is true and complete to the best of my knowledge and belief.

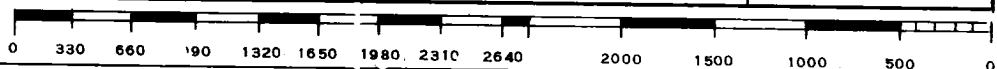
Name	Original Signed By
C. R. Coffey	C. R. Coffey
Position	
Acting District	
Exploitation Engineer	
Company	
Shell Oil Company	
Date	
May 19, 1965	

I hereby certify that the well location shown on this plat was plotted from field notes of actual surveys made by me or under my supervision, and that the same is true and correct to the best of my knowledge and belief.

Date Surveyed

Registered Professional Engineer
and/or Land Surveyor

Certificate No.



COUNTY		CHAVES		FIELD Tobac-Pennsylvanian		STATE NM	
OPR		SHELL OIL COMPANY				MAP	
		2 James-Federal					
		Sec. 24, T-8-S, R-32-E				CO-ORD	
		2109' fr N Line & 734' fr E Line of Sec.					
		Spd 3-24-65					
		Cmp 5-15-65				CLASS	
				FORMATION		DATUM	
CSG & SX - TUBING		LOG:		Yates 2340			
				SA 3543			
11 3/4" 413' 350				Glor 4936			
8 5/8" 3574' 300				Tubb 6418			
5 1/2" 9114' 300				Abo 7269			
				Wolfc 8382			
LOGS EL GR RA IND HC A				Bo "C" 8954			
				TD 9114', PBD 8989'			

IP Bough "C" Perfs 8958-74' Pmpd 116 BOPD + 20 BW. Pot. Based on 24 hr test, gravity 45.9, GOR 548.

Distribution limited and publication prohibited by subscribers' agreement.
Reproduction rights reserved by Williams & Lee Scouting Service, Inc.

CONT. Moran Drlg. Co.		PROP DEPTH 9050'		TYPE	
DATE					

	F.R. 3-25-65
	PD 9050' - Pennsylvanian
	Contractor - Moran Drlg. Co.
3-29-65	Drlg. 3375' anhy & gyp.
4-5-65	Drlg. 6141'.
4-12-65	Drlg. 8102' lm.
4-19-65	TD 9110', running logs.
4-26-65	TD 9114', PBD 8989', swbg.
	Perf 8958-74' W/4 SPF
	Ac. 2500 gals.
	Swbd 75 BO in 13 hrs.
5-3-65	TD 9114', PBD 8989', conditioning hole.
	Pmpd 130 BO in 13 hrs.
	Casing collapsed
	Pulled 5300' of 5 1/2" casing.
5-10-65	TD 9114', PBD 8989', tstg on pump.
	Pmpd 30 BLO + 70 Bbls MC Wtr in 15 hrs.
5-17-65	TD 9114', PBD 8989', COMPLETED.