

NEW MEXICO OIL CONSERVATION COMMISSION
Santa Fe, New Mexico

Form C-101
Revised (12/1/55)

NOTICE OF INTENTION TO DRILL

SEP 30 7 28 AM '63

Notice must be given to the District Office of the Oil Conservation Commission and approval obtained before drilling or recompletion begins. If changes in the proposed plan are considered advisable, a copy of this notice showing such changes will be returned to the sender. Submit this notice in QUINTUPLICATE. One copy will be returned following approval. See additional instructions in Rules and Regulations of the Commission. If State Land submitted, Copies Attach Form C-128 in triplicate to first 3 copies of form C-101

Midland, Texas

(Place)

September 26, 1963

(Date)

OIL CONSERVATION COMMISSION
SANTA FE, NEW MEXICO

Gentlemen:

You are hereby notified that it is our intention to commence the Drilling of a well to be known as
Union Oil Company of California

(Company or Operator)

South Caprock Queen Unit, Tract 40

(Lease)

Well No. **6-29**, in **F** (Unit) The well is

located **1980** feet from the **North** line and **1610** feet from the

West line of Section **29**, T. **15-S**, R. **31-E**, NMPM.

(GIVE LOCATION FROM SECTION LINE) **Caprock Queen** Pool, **Chaves** County

If State Land the Oil and Gas Lease is No. **E-5819**

If patented land the owner is

Address

We propose to drill well with drilling equipment as follows: **Rotary rig**

The status of plugging bond is **J. S. Ward & Son**

Artesia, New Mexico

Drilling Contractor **Unknown at present**

We intend to complete this well in the **Queen Sand** formation at an approximate depth of **3210** feet.

CASING PROGRAM

We propose to use the following strings of Casing and to cement them as indicated:

Size of Hole	Size of Casing	Weight per Foot	New or Second Hand	Depth	Sacks Cement
11"	8-5/8"	24#	New	320'	300 *
7-7/8"	4-1/2"	9.5#	New	3210'	200 -

If changes in the above plans become advisable we will notify you immediately.

ADDITIONAL INFORMATION (If recompletion give full details of proposed plan of work.)

* Surface casing cement to circulate to surface.

Casing and cement will cover all commercial horizons.

Approved **OCT 8 1963**, 19.....
Except as follows:

Sincerely yours,

Union Oil Company of California

(Company or Operator)

By **C. J. Dutton**

Position **Production Clerk**

Send Communications regarding well to

Name **Union Oil Company of California**

Address **619 West Texas Avenue, Midland, Texas**

OIL CONSERVATION COMMISSION

PRORATION MANAGER

NEW MEXICO OIL CONSERVATION COMMISSION
WELL LOCATION AND ACREAGE DEDICATION PLAT

FORM C-128
Revised 3/1/57

SEE INSTRUCTIONS FOR COMPLETING THIS FORM ON THE REVERSE SIDE

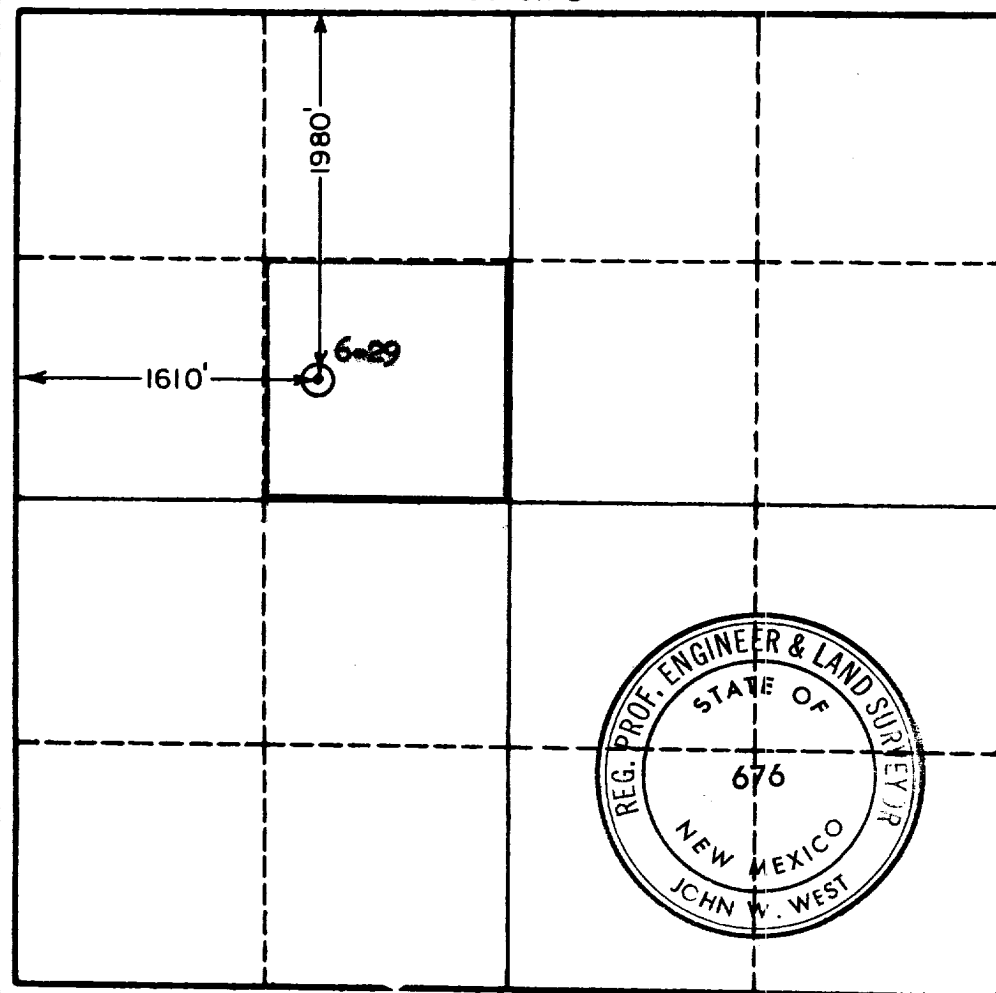
SECTION A

Operator UNION OIL CO. OF CALIFORNIA		Lease TRACT 40 SOUTH CAPROCK QUEEN UNIT		Well No. 6-29
Unit Letter F	Section 29	Township 15 SOUTH	Range 31 EAST	County CHAVES
Actual Footage Location of Well: 1980 feet from the NORTH line and 1610 feet from the WEST line				
Ground Level Elev. 4429.05	Producing Formation Queen Sand		Pool Caprock Queen	Dedicated Acreage: 40 Acres

1. Is the Operator the only owner in the dedicated acreage outlined on the plat below? YES _____ NO X . ("Owner" means the person who has the right to drill into and to produce from any pool and to appropriate the production either for himself or for himself and another. (65-3-29 (e) NMSA 1935 Comp.)
2. If the answer to question one is "no," have the interests of all the owners been consolidated by communization agreement or otherwise? YES X NO _____. If answer is "yes," Type of Consolidation Unitized Operation
3. If the answer to question two is "no," list all the owners and their respective interests below:

Owner	Land Description

SECTION B



CERTIFICATION

I hereby certify that the information in SECTION A above is true and complete to the best of my knowledge and belief.

Name <u>C. H. Dizon</u>
Position Production Clerk
Company Union Oil Co. of California
Date September 26, 1963

I hereby certify that the well location shown on the plat in SECTION B was plotted from field notes of actual surveys made by me or under my supervision, and that the same is true and correct to the best of my knowledge and belief.

Date Surveyed 5-15-63
Registered Professional Engineer and/or Land Surveyor, JOHN W. WEST
<u>John W. West</u>
Certificate No. N.M. - P.E. & L.S. NO. 676

0 330 660 990 1320 1650 1980 2310 2640 2000 1600 1200 800 400 0