

NEW I. CO OIL CONSERVATION COMMISSION
WELL LOCATION AND ACREAGE DEDICATION PLAT O.C.C.

Form C-102
Supersedes C-128
Effective 1-1-65

All distances must be from the outer boundaries of the Section.

Operator <i>The Atlantic Refining Co.</i> Atlantic Richfield Company			Lease MAY 11 12 57 PM '66		Well No. 3
Unit Letter C	Section 3	Township 8-S	Range 33-E	County Chaves	
Actual Footage Location of Well: 410 feet from the North line and 3300 feet from the East line					
Ground Level Elev.	Producing Formation San Andres		Pool Chaveroo	Dedicated Acreage: 40.18 Acres	

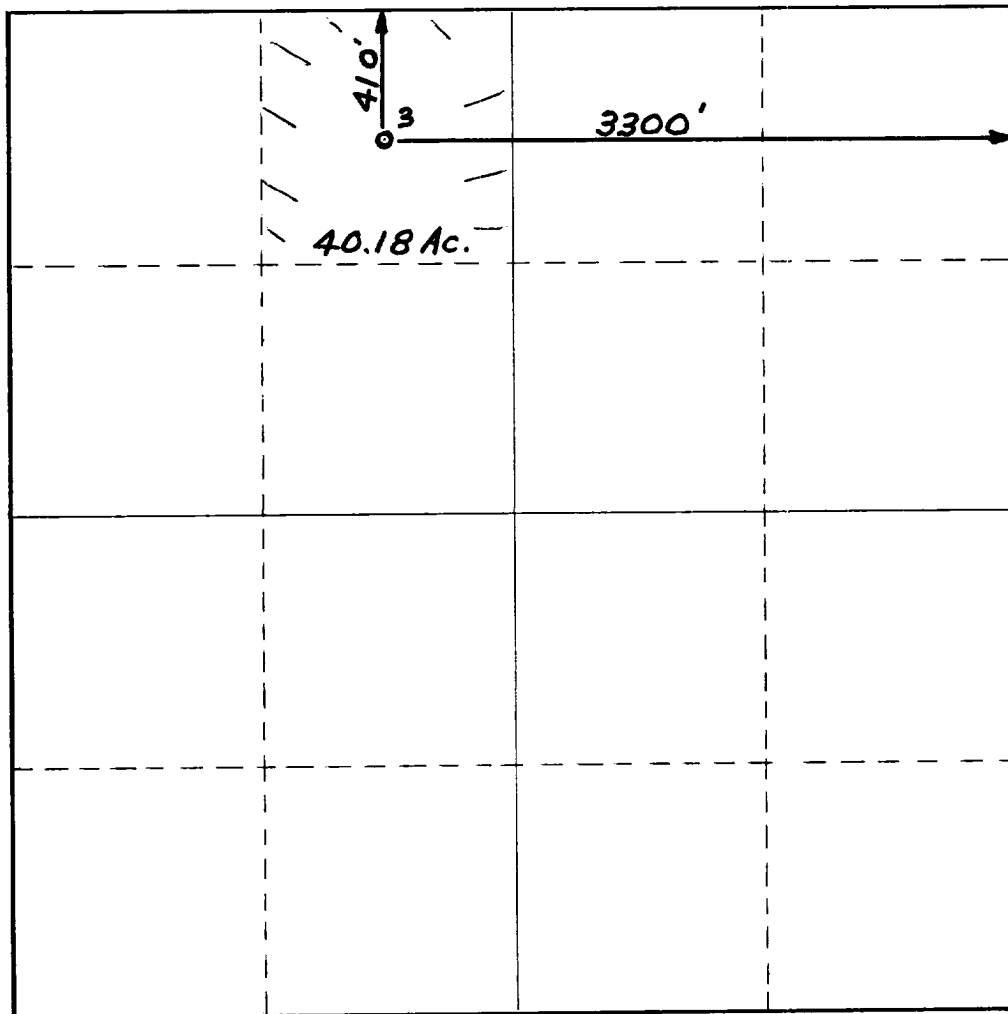
1. Outline the acreage dedicated to the subject well by colored pencil or hachure marks on the plat below.
2. If more than one lease is dedicated to the well, outline each and identify the ownership thereof (both as to working interest and royalty).
3. If more than one lease of different ownership is dedicated to the well, have the interests of all owners been consolidated by communitization, unitization, force-pooling, etc?

☐ Yes ☐ No If answer is "yes," type of consolidation _____

If answer is "no," list the owners and tract descriptions which have actually been consolidated. (Use reverse side of this form if necessary.) _____

No allowable will be assigned to the well until all interests have been consolidated (by communitization, unitization, forced-pooling, or otherwise) or until a non-standard unit, eliminating such interests, has been approved by the Commission.

R-33-E



CERTIFICATION

I hereby certify that the information contained herein is true and complete to the best of my knowledge and belief.

A. D. Kloxin

Name

A. D. Kloxin

Position

Dist. Drlg. & Prod. Supt.

The Atlantic Refining Co.
Atlantic Richfield Company

Date

May 10, 1966

I hereby certify that the well location shown on this plat was plotted from field notes of actual surveys made by me or under my supervision, and that the same is true and correct to the best of my knowledge and belief.

Date Surveyed

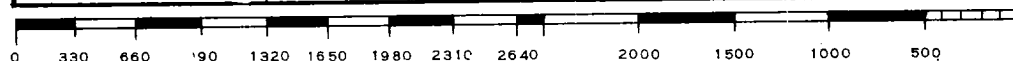
April 14-1966

Registered Professional Engineer and/or Land Surveyor

George S. Anderson

Certificate No.

648



T
8
S