

NEW MEXICO OIL CONSERVATION COMMISSION
WELL LOCATION AND ACREAGE DEDICATION PLAT

Form C-102
Supersedes C-128
Effective 1-1-65

All distances must be from the outer boundaries of the well. **NO. 885 OFFICE O. C. C.**

Operator UNION TEXAS PETROLEUM CORP.		Lease BAXTER FEDERAL		Well No. 4
Unit Letter H	Section 8	Township 8 SOUTH	Range 30 EAST	County CHAVES
Actual Location of Well: 1980 feet from the NORTH line and 660 feet from the EAST line				
Ground Level Elev. 4110 (est)	Producing Formation San Andres	Pool Cato (San Andres)	Dedicated Acreage: 40 Acres	

1. Outline the acreage dedicated to the subject well by colored pencil or hachure marks on the plat below.
2. If more than one lease is dedicated to the well, outline each and identify the ownership thereof (both as to working interest and royalty).
3. If more than one lease of different ownership is dedicated to the well, have the interests of all owners been consolidated by communitization, unitization, force-pooling, etc?

☐ Yes ☐ No If answer is "yes," type of consolidation _____

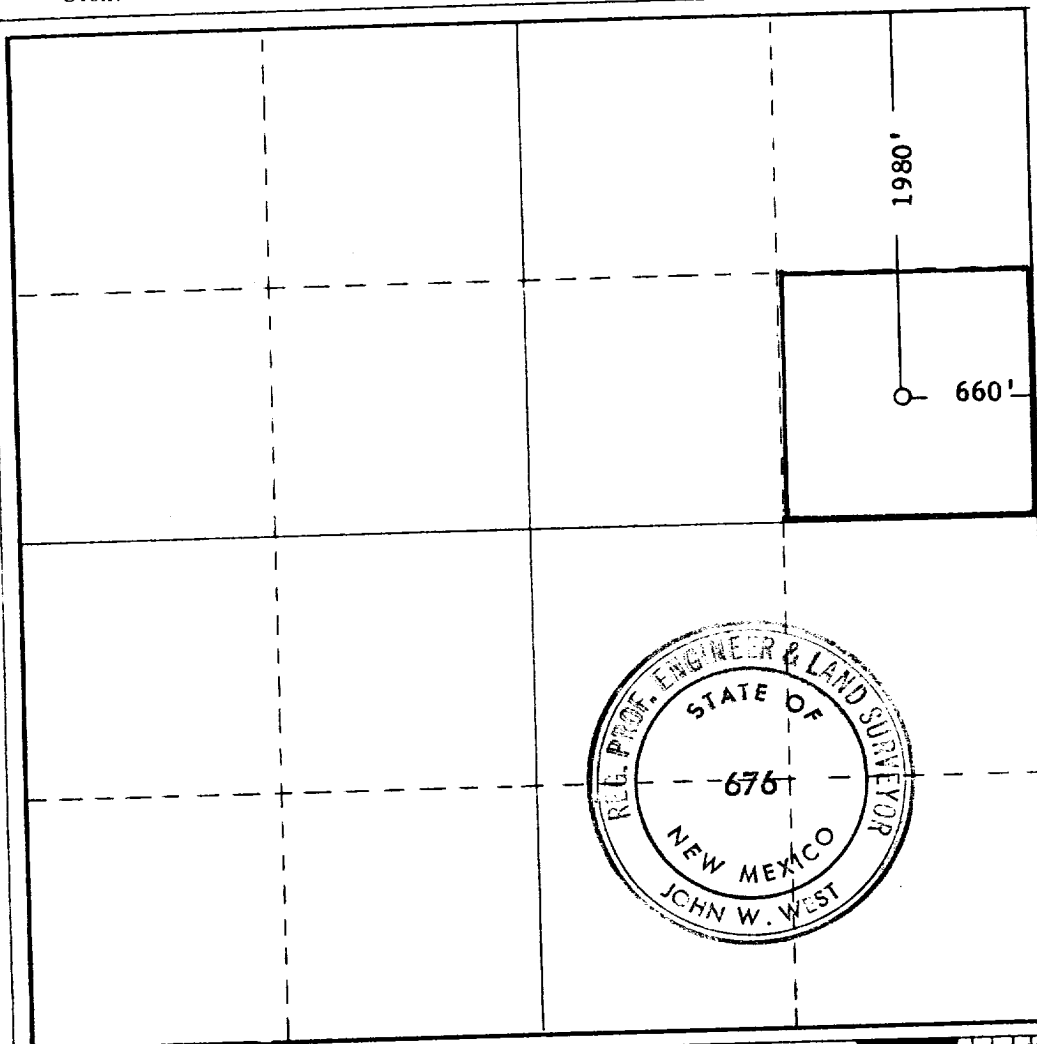
If answer is "no," list the owners and tract descriptions which have actually been consolidated (Use reverse side of this form if necessary.) _____

No allowable will be assigned to the well until all interests have been consolidated (by communitization, unitization, forced-pooling, or otherwise) or until a non-standard unit, eliminating such interests, has been approved by the Commission.

RECEIVED

MAY 18 1967

**U. S. GEOLOGICAL SURVEY
ROSWELL, NEW MEXICO**



CERTIFICATION

I hereby certify that the information contained herein is true and complete to the best of my knowledge and belief.

Name: L. E. Stuart
Position: Asst. Dist. Supt. - Drlg.
Company: Union Texas Petroleum Corp.
Date: May 16, 1967

I hereby certify that the well location shown on this plat was plotted from field notes of actual surveys made by me or under my supervision, and that the same is true and correct to the best of my knowledge and belief.

Date Surveyed: MAY 16, 1967
Registered Professional Engineer and/or Land Surveyor

John W. West
Certificate No. **676**

