

**NEW MEXICO OIL CONSERVATION COMMISSION
WELL LOCATION AND ACREAGE DEDICATION PLAT**

All distances must be from the outer boundaries of the Section.

Form C-102
Supersedes C-128
Effective 1-1-65
HOBBS OFFICE O. C. C.

JUN 21 11:28 AM '67

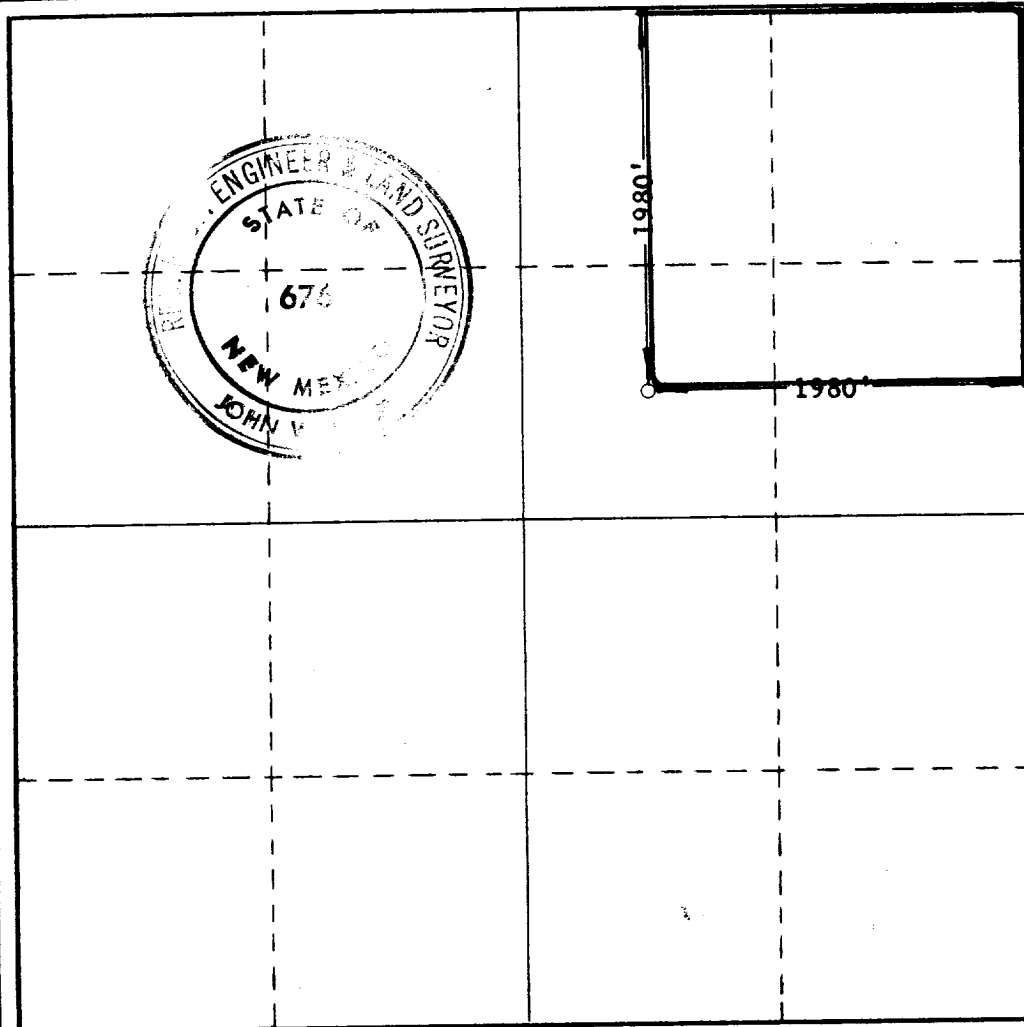
Operator UNION TEXAS PETROLEUM			Lease BAXTER FEDERAL		
Unit Letter G	Section 8	Township 8 SOUTH	Range 30 EAST	County CHAVES	
Actual Footage Location of Well:					
1980 feet from the NORTH line and		1980 feet from the EAST line			
Ground Level Elev. 4110 (L. Est.)	Producing Formation San Andres	Pool Cato	Dedicated Acreage: 40 Acres		

1. Outline the acreage dedicated to the subject well by colored pencil or hachure marks on the plat below.
2. If more than one lease is dedicated to the well, outline each and identify the ownership thereof (both as to working interest and royalty).
3. If more than one lease of different ownership is dedicated to the well, have the interests of all owners been consolidated by communitization, unitization, force-pooling, etc?

☐ Yes ☐ No If answer is "yes," type of consolidation _____

If answer is "no," list the owners and tract descriptions which have actually been consolidated. (Use reverse side of this form if necessary.) _____

No allowable will be assigned to the well until all interests have been consolidated (by communitization, unitization, forced-pooling, or otherwise) or until a non-standard unit, eliminating such interests, has been approved by the Commission.



CERTIFICATION

I hereby certify that the information contained herein is true and complete to the best of my knowledge and belief.

Name _____
Position **Office Supervisor**

Company **Union Texas Pet. Corp.**

Date **June 16, 1967**

I hereby certify that the well location shown on this plat was plotted from field notes of actual surveys made by me or under my supervision, and that the same is true and correct to the best of my knowledge and belief.

Date Surveyed **6/13/67**

Registered Professional Engineer and/or Land Surveyor

John W. West
Certificate No. **676**

0 330 660 990 1320 1650 1980 2310 2640 2000 1500 1000 500 0

113