

**NEW MEXICO OIL CONSERVATION COMMISSION
WELL LOCATION AND ACREAGE DEDICATION PLAT**

Form C-102
Supplement C-128
Effective 1-1-65
OFFICE OF THE
JUL 18 11 50 AM '67

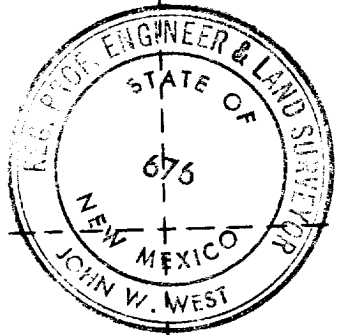
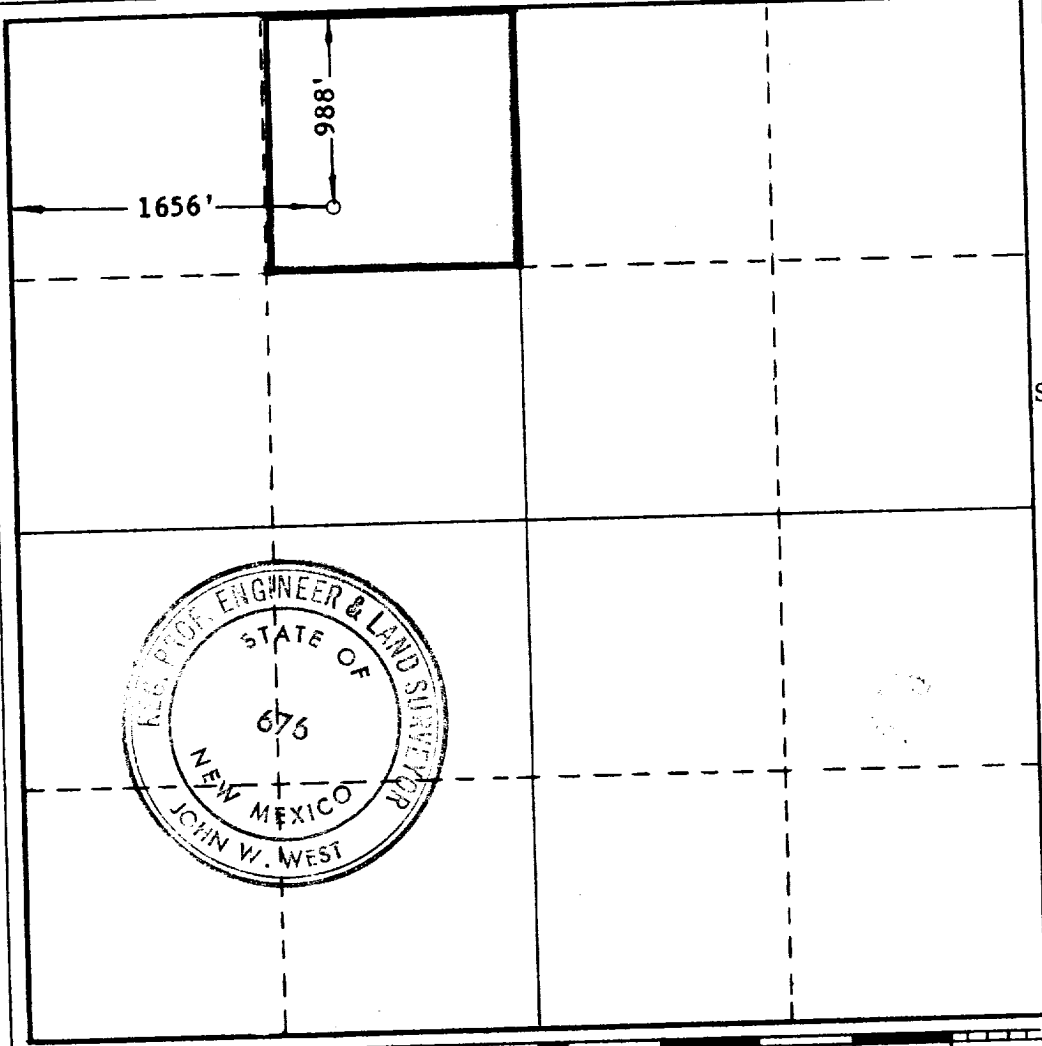
All distances must be from the outer boundaries of the Section.

Operator SOUTHWEST PRODUCTION CORPORATION			Lease COLL FEDERAL		Well No. 2
Unit Letter C	Section 13	Township 8 SOUTH	Range 30 EAST	County CHAVES	
Actual Footage Location of Well: 988 feet from the NORTH line and 1656 feet from the WEST line					
Ground Level Elev. 4165'	Producing Formation SAN ANDRES		Pool CATO	Dedicated Acreage: 40 Acres	

- Outline the acreage dedicated to the subject well by colored pencil or hachure marks on the plat below.
- If more than one lease is dedicated to the well, outline each and identify the ownership thereof (both as to working interest and royalty).
- If more than one lease of different ownership is dedicated to the well, have the interests of all owners been consolidated by communitization, unitization, force-pooling, etc?

Yes No If answer is "yes," type of consolidation _____

If answer is "no," list the owners and tract descriptions which have actually been consolidated. (Use reverse side of this form if necessary.) _____
 No allowable will be assigned to the well until all interests have been consolidated (by communitization, unitization, forced-pooling, or otherwise) or until a non-standard unit, eliminating such interests, has been approved by the Commission.



CERTIFICATION

I hereby certify that the information contained herein is true and complete to the best of my knowledge and belief.

Name *John W. West*
 Position
MANAGER

Company
SOUTHWEST PRODUCTION CORPORATION

Date
JULY 14, 1967

I hereby certify that the well location shown on this plat was plotted from field notes of actual surveys made by me or under my supervision, and that the same is true and correct to the best of my knowledge and belief.

Date Surveyed
6/9/67

Registered Professional Engineer and/or Land Surveyor
John W. West

Certificate No. **676**

