

NMOC - ARTESIA  
NMOC - MOJAVE  
BLM - SANTA FEUNITED STATES  
DEPARTMENT OF THE INTERIOR  
GEOLOGICAL SURVEY

## APPLICATION FOR PERMIT TO DRILL, DEEPEN, OR PLUG BACK

## 1. TYPE OF WORK

DRILL ☒DEEPEN ☐PLUG BACK ☐

## 2. TYPE OF WELL

OIL  
WELL ☒GAS  
WELL ☐OTHER ☐SINGLE  
ZONE ☒MULTIPLE  
ZONE ☐

## 3. NAME OF OPERATOR

PAN AMERICAN PETROLEUM CORPORATION

## 4. ADDRESS OF OPERATOR

BOX 68, HOBBS, N. M. 88240

## 5. LOCATION OF WELL (Report location clearly and in accordance with any State requirements.)\*

At surface

660' FSL x 660' FWL Sec. 13 (UNIT M, SW 1/4 SW 1/4)

At proposed prod. zone

## 6. DISTANCE IN MILES AND DIRECTION FROM NEAREST TOWN OR POST OFFICE\*

## 7. DISTANCE FROM PROPOSED\*

LOCATION TO NEAREST  
PROPERTY OR LEASE LINE, FT.  
(Also to nearest drlg. unit line, if any)

## 8. DISTANCE FROM PROPOSED LOCATION\*

TO NEAREST WELL, DRILLING, COMPLETED,  
OR APPLIED FOR, ON THIS LEASE, FT.

## 9. NO. OF ACRES IN LEASE

## 10. PROPOSED DEPTH

11. NO. OF ACRES ASSIGNED  
TO THIS WELL

## 12. ROTARY OR CABLE TOOLS

## 13. ELEVATIONS (Show whether DF, RT, GR, etc.)

## 14. APPROX. DATE WORK WILL START\*

## 15.

## PROPOSED CASING AND CEMENTING PROGRAM

SIZE OF HOLE	SIZE OF CASING	WEIGHT PER FOOT	SETTING DEPTH	QUANTITY OF CEMENT
17 1/2"	13 3/8"	48#	450'	Circulate
12 1/4-11"	9 5/8"	24-32#	4950'	BASE of Salt
7 7/8"	4 1/2"	95-11#	10500'	600' above uppermost pay.

after drilling well, logs will be run and evaluations made, perforating and as stimulating as necessary in attempting commercial production.

IN ABOVE SPACE DESCRIBE PROPOSED PROGRAM: If proposal is to deepen or plug back, give data on present productive zone and proposed new productive zone. If proposal is to drill or deepen directionally, give pertinent data on subsurface locations and measured and true vertical depths. Give blowout preventer program, if any.

## 24.

SIGNED

TITLE

AREA SUPERINTENDENT

DATE

10-9-67

(This space for Federal or State office use)

PERMIT NO.

APPROVAL DATE

APPROVED BY

TITLE

APPROVED

CONDITIONS OF APPROVAL, IF ANY:

0-4- USGS-ROS  
1- NSW  
1- SUSP  
1- RRY

\*See Instructions On Reverse Side

OCT 12 1967

J. W. Sutherland  
DISTRICT ENGINEER

NEW MEXICO OIL CONSERVATION COMMISSION  
WELL LOCATION AND ACREAGE DEDICATION PLAT

Form C-122  
Supersedes C-128  
Effective 1-1-65

All distances must be from the outer boundaries of the Section.

NM-025519

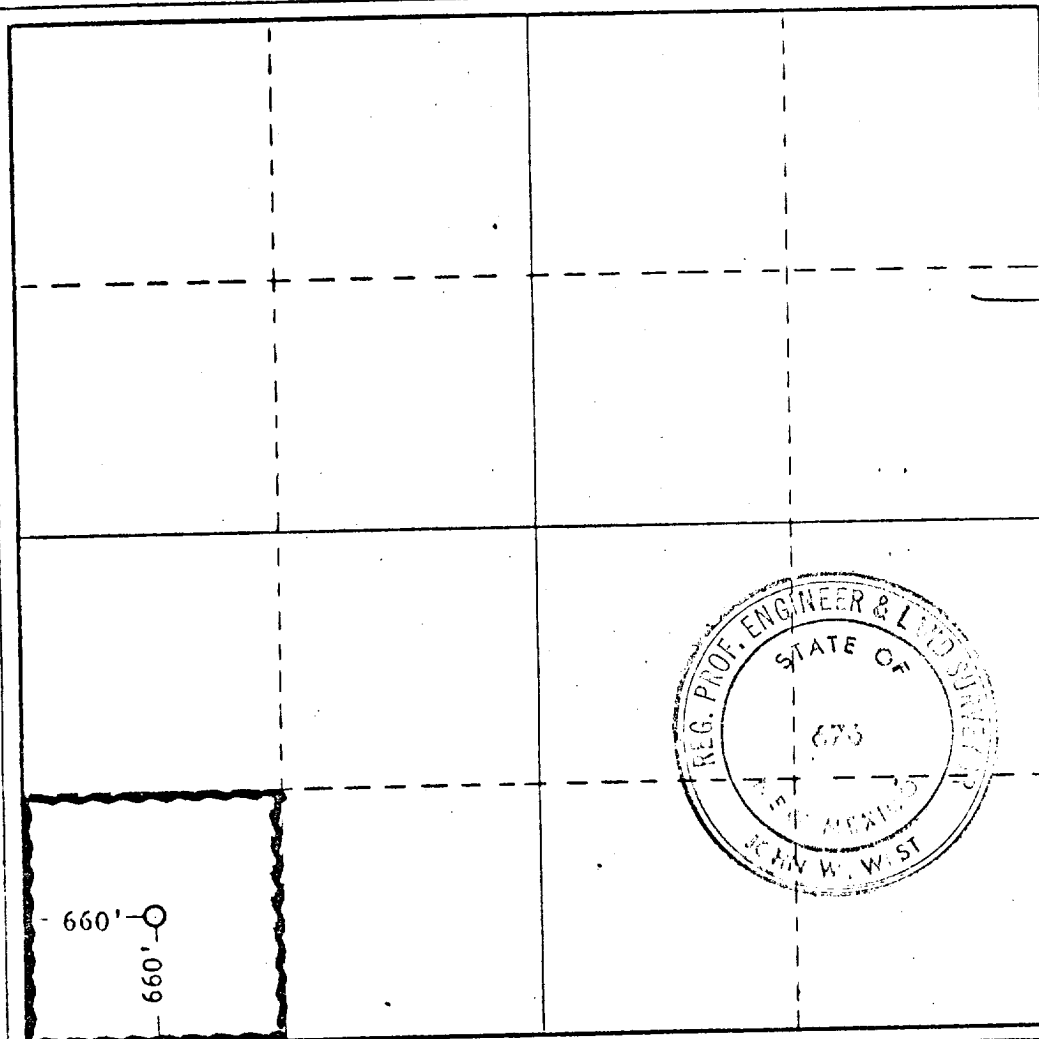
Operator <b>PAN AMERICAN PETROLEUM CORP.</b>		Lease <b>WHITE, FEDERAL</b>		Well No. <b>1</b>
Section <b>M</b>	Section <b>13</b>	Township <b>9 SOUTH</b>	Range <b>30 EAST</b>	County <b>CHAVES</b>
Actual Footage Location of Well: <b>660</b> feet from the <b>SOUTH</b> line and <b>660</b> feet from the <b>WEST</b> line				
Ground Level Elev.	Producing Formation <b>MORROW</b>	Pool <b>WILDCAT</b>	Dedicated Acreage: <b>40</b> Acres	

1. Outline the acreage dedicated to the subject well by colored pencil or hatchure marks on the plat below.
2. If more than one lease is dedicated to the well, outline each and identify the ownership thereof (both as to working interest and royalty).
3. If more than one lease of different ownership is dedicated to the well, have the interests of all owners been consolidated by communitization, unitization, force-pooling, etc?

☐ Yes ☐ No If answer is "yes," type of consolidation \_\_\_\_\_

If answer is "no," list the owners and tract descriptions which have actually been consolidated. (Use reverse side of this form if necessary.) \_\_\_\_\_

No allowable will be assigned to the well until all interests have been consolidated (by communitization, unitization, forced-pooling, or otherwise) or until a non-standard unit, eliminating such interests, has been approved by the Commission.



CERTIFICATION

I hereby certify that the information contained herein is true and complete to the best of my knowledge and belief.

Name \_\_\_\_\_

Position  
**AREA SUPERINTENDENT**

Company  
**PAN AMERICAN PETROLEUM CORPORATION**

Date \_\_\_\_\_

I hereby certify that the well location shown on this plat was plotted from field notes of actual surveys made by me or under my supervision, and that the same is true and correct to the best of my knowledge and belief.

Date Surveyed  
**OCTOBER 6, 1967**

Registered Professional Engineer and/or Land Surveyor

*John W. West*  
Certificate No. **676**

