

NM0003 - ARIZONA

NM0003 - NEW MEXICO

BLM - 8-10-68

UNITED STATES  
DEPARTMENT OF THE INTERIOR  
GEOLOGICAL SURVEY

## APPLICATION FOR PERMIT TO DRILL, DEEPEN, OR PLUG BACK

## 1a. TYPE OF WORK

DRILL ☒DEEPEN ☐PLUG BACK ☐

## b. TYPE OF WELL

OIL  
WELL ☒GAS  
WELL ☐

OTHER

SINGLE  
ZONE ☒MULTIPLE  
ZONE ☐

## 2. NAME OF OPERATOR

Sinclair Oil &amp; Gas Company

## 3. ADDRESS OF OPERATOR

P. O. Box 1920, Hobbs, New Mexico 88240

## 4. LOCATION OF WELL (Report location clearly and in accordance with any State requirements.)\*

At surface

990 feet fr the North line and 1650 feet fr the East line

At proposed prod. zone

as above

## 14. DISTANCE IN MILES AND DIRECTION FROM NEAREST TOWN OR POST OFFICE\*

## 19. DISTANCE FROM PROPOSED\*

LOCATION TO NEAREST  
PROPERTY OR LEASE LINE, FT.  
(Also to nearest drlg. unit line, if any)

## 18. DISTANCE FROM PROPOSED LOCATION\*

TO NEAREST WELL, DRILLING, COMPLETED,  
OR APPLIED FOR, ON THIS LEASE, FT.

## 16. NO. OF ACRES IN LEASE

1840

## 19. PROPOSED DEPTH

3600'

17. NO. OF ACRES ASSIGNED  
TO THIS WELL

40

## 20. ROTARY OR CABLE TOOLS

Rotary

## 21. ELEVATIONS (Show whether DF, RT, GR, etc.)

## 22. APPROX. DATE WORK WILL START\*

When approved

## 23.

## PROPOSED CASING AND CEMENTING PROGRAM

SIZE OF HOLE	SIZE OF CASING	WEIGHT PER FOOT	SETTING DEPTH	QUANTITY OF CEMENT
12-1/4"	8-5/8"OD	20#	300'	200 sacks
7-7/8"	4-1/2"OD	9.5#	3600'	300 sacks

This permit to drill submitted to change well location.

This permit to drill cancels Application For Permit To Drill approved by Mr.

J. W. Sutherland, District Engineer, USGS, Roswell New Mexico on December 8, 1967.

Approval received O.K. to spud on 3-31-68 by phone conversation from Mr. R. E. Shook, USGS, Roswell, New Mexico to D. L. Shackelford, Production Clerk, Sinclair Oil &amp; Gas Co. Hobbs, N.M.

IN ABOVE SPACE DESCRIBE PROPOSED PROGRAM: If proposal is to deepen or plug back, give data on present productive zone and proposed new productive zone. If proposal is to drill or deepen directionally, give pertinent data on subsurface locations and measured and true vertical depths. Give blowout preventer program if any.

24.

SIGNED

TITLE Superintendent

DATE 3-29-68

(This space for Federal or State office use)

PERMIT NO.

APPROVAL DATE

APPROVED BY

TITLE

DATE

APPROVED

APR 1 1968

APR 2 1968

J. W. SUTHERLAND  
DISTRICT ENGINEER

\*See Instructions On Reverse Side

USGS, Roswell, cc: Regional Office, cc: file

U.S. GEOLOGICAL SURVEY  
ROSWELL, NEW MEXICO

NEW MEXICO OIL CONSERVATION COMMISSION  
WELL LOCATION AND ACREAGE DEDICATION PLAT

Form C-102  
Supersedes C-128  
Effective 1-1-65

All distances must be from the outer boundaries of the Section.

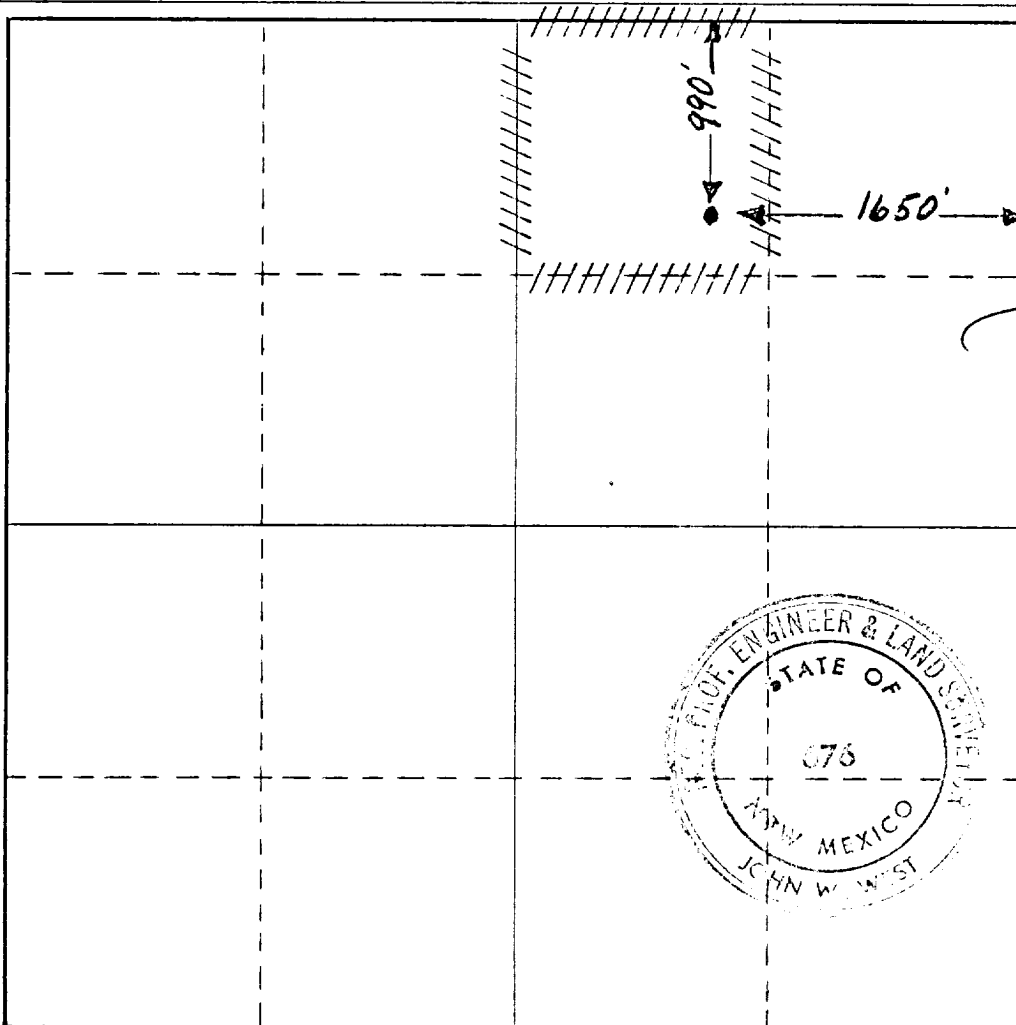
Operator <b>Sinclair Oil &amp; Gas Company</b>		Lease <b>Winkler-Federal</b>		Well No. <b>13</b>
Unit Letter <b>E</b>	Section <b>29</b>	Township <b>8 South</b>	Range <b>30 East</b>	County <b>Chaves</b>
Actual Footage Location of Well: <b>990</b> feet from the <b>North</b> line and <b>1650</b> feet from the <b>East</b> line				
Ground Level E.lev.	Producing Formation <b>San Andres</b>	Pool <b>Cato</b>	Dedicated Acreage: <b>40</b> Acres	

1. Outline the acreage dedicated to the subject well by colored pencil or hachure marks on the plat below.
2. If more than one lease is dedicated to the well, outline each and identify the ownership thereof (both as to working interest and royalty).
3. If more than one lease of different ownership is dedicated to the well, have the interests of all owners been consolidated by communitization, unitization, force-pooling, etc?

☐ Yes ☐ No If answer is "yes," type of consolidation \_\_\_\_\_

If answer is "no," list the owners and tract descriptions which have actually been consolidated. (Use reverse side of this form if necessary.) \_\_\_\_\_

No allowable will be assigned to the well until all interests have been consolidated (by communitization, unitization, forced-pooling, or otherwise) or until a non-standard unit, eliminating such interests, has been approved by the Commission.



CERTIFICATION

I hereby certify that the information contained herein is true and complete to the best of my knowledge and belief.

Name *Lee Burn*

Position  
**Superintendent**

Company  
**Sinclair Oil & Gas Company**

Date  
**March 29, 1968**

I hereby certify that the well location shown on this plat was plotted from field notes of actual surveys made by me or under my supervision, and that the same is true and correct to the best of my knowledge and belief.

Date Surveyed  
**March 28, 1968**

Registered Professional Engineer and/or Land Surveyor

*John W. West*

Certificate No. **676**

330 660 990 1320 1650 1980 2310 2640 2000 1500 1000 500 0