

**NEW MEXICO OIL CONSERVATION COMMISSION
WELL LOCATION AND ACREAGE DEDICATION PLAT**

Form C-102
Supersedes C-128
Effective 1-1-65

HOBBS OFFICE O. C. C.
All distances must be from the outer boundaries of the Section.

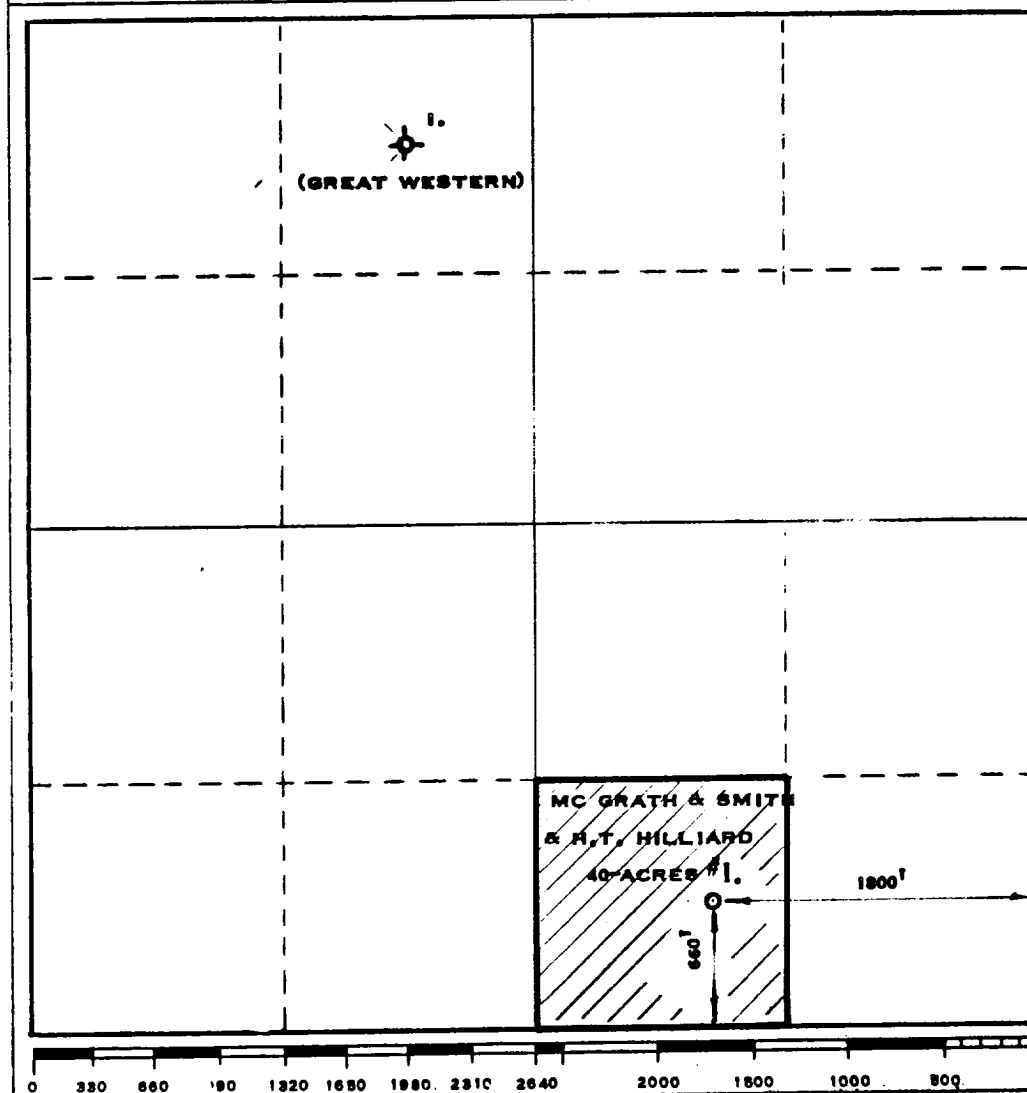
Operator McGRATH & SMITH, INC.			Lease 21 9 STATE 56U		Well No. 1
Unit Letter "O"	Section 36	Township 8-S	Range 32-E	County CHAVEZ	
Actual Footage Location of Well: <div style="display: flex; justify-content: space-between;"> 660 feet from the SOUTH line and 1800 feet from the EAST line </div>					
Ground Level Elev. 4405	Producing Formation PENNSYLVANIAN	Pool BAR - U - PENN		Dedicated Acreage: 40 Acres	

1. Outline the acreage dedicated to the subject well by colored pencil or hachure marks on the plat below.
2. If more than one lease is dedicated to the well, outline each and identify the ownership thereof (both as to working interest and royalty).
3. If more than one lease of different ownership is dedicated to the well, have the interests of all owners been consolidated by communitization, unitization, force-pooling, etc?

☐ Yes ☐ No If answer is "yes," type of consolidation _____

If answer is "no," list the owners and tract descriptions which have actually been consolidated. (Use reverse side of this form if necessary.) _____

No allowable will be assigned to the well until all interests have been consolidated (by communitization, unitization, forced-pooling, or otherwise) or until a non-standard unit, eliminating such interests, has been approved by the Commission.



CERTIFICATION

I hereby certify that the information contained herein is true and complete to the best of my knowledge and belief.

Name _____
Position Engineer
Company McGrath & Smith, Inc
Date April 18, 1969

I hereby certify that the well location shown on this plat was plotted from field notes of actual surveys made by me or under my supervision, and that the same is true and correct to the best of my knowledge and belief.

Date Surveyed APRIL 17, 1969
Registered Professional Engineer and/or Land Surveyor
Max A. Schumann
MAX A. SCHUMANN 1510
Certificate No. 1510

173