

UNITED STATES
DEPARTMENT OF THE INTERIOR
GEOLOGICAL SURVEY

APPLICATION FOR PERMIT TO DRILL, DEEPEN, OR PLUG BACK

1a. TYPE OF WORK

DRILL ☒DEEPEN ☐PLUG BACK ☐

b. TYPE OF WELL

OIL
WELL ☒GAS
WELL ☐

OTHER

SINGLE
ZONE ☒MULTIPLE
ZONE ☐

2. NAME OF OPERATOR

PAN AMERICAN PETROLEUM CORPORATION

3. ADDRESS OF OPERATOR

BOX 68, HOBBS, N. M. 88240

4. LOCATION OF WELL (Report location clearly and in accordance with any State requirements.)*

At surface

330' FNL x 990' FEL Sec. 23 (A, NE 1/4 NE 1/4)
At proposed prod. zone

14. DISTANCE IN MILES AND DIRECTION FROM NEAREST TOWN OR POST OFFICE*

15. DISTANCE FROM PROPOSED*

LOCATION TO NEAREST
PROPERTY OR LEASE LINE, FT.
(Also to nearest drlg. unit line, if any)18. DISTANCE FROM PROPOSED LOCATION*
TO NEAREST WELL, DRILLING, COMPLETED,
OR APPLIED FOR, ON THIS LEASE, FT.

16. NO. OF ACRES IN LEASE

19. PROPOSED DEPTH

3700'

17. NO. OF ACRES ASSIGNED
TO THIS WELL

40

20. ROTARY OR CABLE TOOLS

ROTARY

21. ELEVATIONS (Show whether DF, RT, GR, etc.)

22. APPROX. DATE WORK WILL START*

5-28-69

23.

PROPOSED CASING AND CEMENTING PROGRAM

SIZE OF HOLE	SIZE OF CASING	WEIGHT PER FOOT	SETTING DEPTH	QUANTITY OF CEMENT
12 1/4 - 11"	8 5/8"	24 #	300'	Circ.
7 7/8"	4 1/2"	9.5 #	3700'	Full to 600' above Pay.

After drilling well, logs will be run and
evaluations made, perforating and/or stimulating
as necessary in attempting commercial production.

RECEIVED

MAY 19 1969

O. C. C.

ARTERIA OFFICE

IN ABOVE SPACE DESCRIBE PROPOSED PROGRAM: If proposal is to deepen or plug back, give data on present productive zone and proposed new productive zone. If proposal is to drill or deepen directionally, give pertinent data on subsurface locations and measured and true vertical depths. Give blowout preventer program, if any.

24.

SIGNED

TITLE

DATE MAY 14 1969

(This space for Federal or State office use)

PERMIT NO.

APPROVAL DATE

APPROVED BY

CONDITIONS OF APPROVAL, IF ANY

TITLE

DATE

2-4-USGS-ART
1-NSW
1-SUSP
1-RRY

APPROVED
MAY 13 1969
R. L. BECKMA

THIS APPROVAL IS RESCINDED IF OPERATIONS
ARE NOT COMMENCED WITHIN 3 MONTHS.
EXPIRES MAY 16 1969

*See Instructions On Reverse Side

NEW MEXICO OIL CONSERVATION COMMISSION
WELL LOCATION AND ACREAGE DEDICATION PLAT

Form C-102
Supersedes C-128
Effective 1-1-65

All distances must be from the outer boundaries of the section

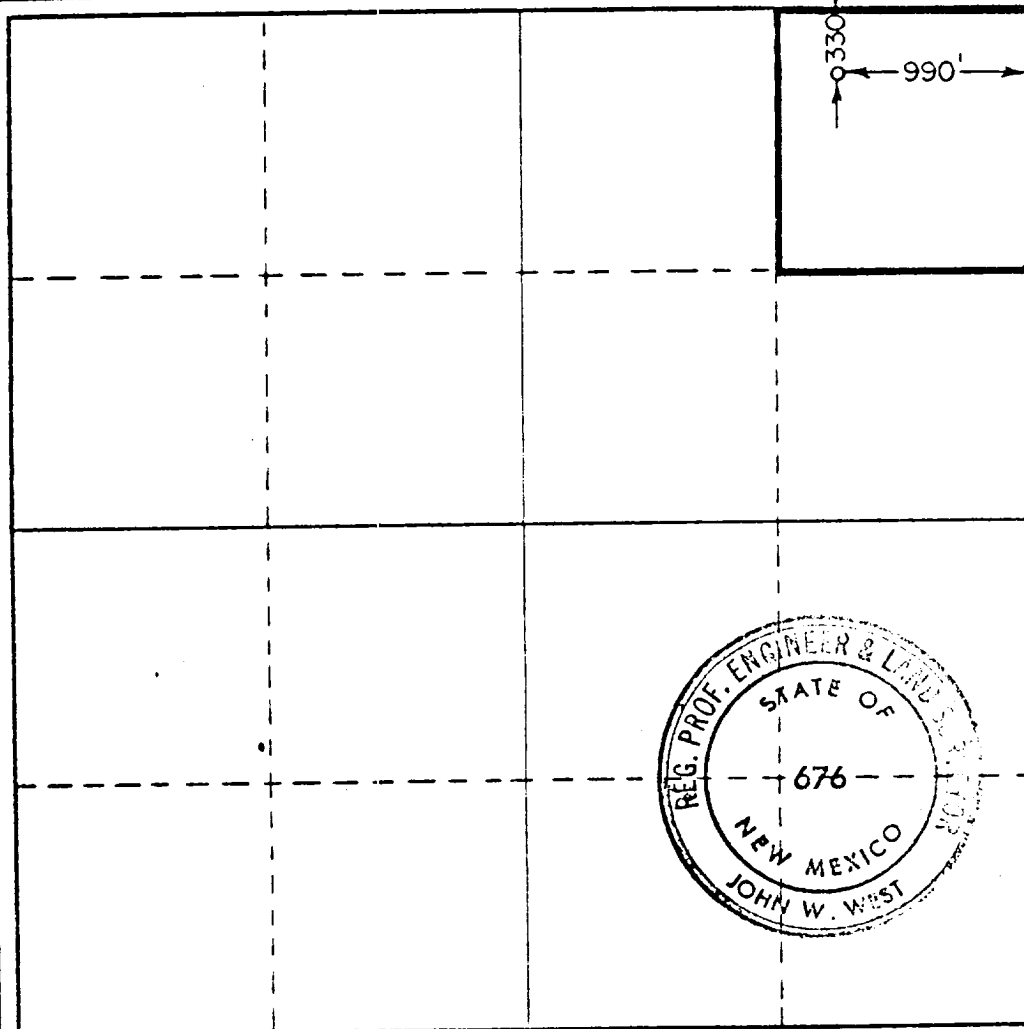
Operator PAN AMERICAN PETROLEUM CORP.		Lease CATO 33 FEDERAL		Well No. 3
Unit Letter A	Section 23	Township 8 SOUTH	Range 30 EAST	County CHAVES
Actual Well Location of Well: 330 feet from the NORTH line and 990 feet from the EAST line				
Ground Level Elev.	Producing Formation SAN ANDRES	Pool CATO San Andres	Dedicated Acreage: 40 Acres	

1. Outline the acreage dedicated to the subject well by colored pencil or hatchure marks on the plat below.
2. If more than one lease is dedicated to the well, outline each and identify the ownership thereof (both as to working interest and royalty).
3. If more than one lease of different ownership is dedicated to the well, have the interests of all owners been consolidated by communitization, unitization, force-pooling, etc?

☐ Yes ☐ No If answer is "yes," type of consolidation _____

If answer is "no," list the owners and tract descriptions which have actually been consolidated. (Use reverse side of this form if necessary.) _____

No allowable will be assigned to the well until all interests have been consolidated (by communitization, unitization, forced-pooling, or otherwise) or until a non-standard unit, eliminating such interests, has been approved by the Commission.



CERTIFICATION

I hereby certify that the information contained herein is true and complete to the best of my knowledge and belief.

Name
John W. West
Position
AREA FOREMAN
Company
PAN AMERICAN PETROLEUM CORPORATION

Date
MAY 14 1969

I hereby certify that the well location shown on this plat was plotted from field notes of actual surveys made by me or under my supervision, and that the same is true and correct to the best of my knowledge and belief.

Date Surveyed
MAY 8, 1969

Registered Professional Engineer and/or Land Surveyor

John W. West
Certificate No. **676**

0 200 400 600 800 1000 1200 1400 1600 1800 2000 2200 2400 2600 2800 3000