

UNITED STATES  
DEPARTMENT OF THE INTERIOR  
GEOLOGICAL SURVEY

## APPLICATION FOR PERMIT TO DRILL, DEEPEN, OR PLUG BACK

## 1a. TYPE OF WORK

DRILL ☒DEEPEN ☐PLUG BACK ☐

## b. TYPE OF WELL

OIL  
WELL ☒GAS  
WELL ☐

OTHER

SINGLE  
ZONE ☒MULTIPLE  
ZONE ☐

## 2. NAME OF OPERATOR

Adobe Oil Company

## 3. ADDRESS OF OPERATOR

601 Wilkinson-Foster Bldg., Midland, Texas 79701

## 4. LOCATION OF WELL (Report location clearly and in accordance with any State requirements.)\*

At surface 1930' FS&amp;EL of Section 6, T-9-S, R-30-E, Chaves County,

N. M.  
At proposed prod. zone

San Andres

## 14. DISTANCE IN MILES AND DIRECTION FROM NEAREST TOWN OR POST OFFICE\*

42 miles W NW of Tatum

## 10. DISTANCE FROM PROPOSED\*

LOCATION TO NEAREST  
PROPERTY OR LEASE LINE, FT.  
(Also to nearest drlg. unit line, if any) 660'

## 16. NO. OF ACRES IN LEASE

80

17. NO. OF ACRES ASSIGNED  
TO THIS WELL

40

18. DISTANCE FROM PROPOSED LOCATION\*  
TO NEAREST WELL, DRILLING, COMPLETED,  
OR APPLIED FOR, ON THIS LEASE, FT.

none

## 19. PROPOSED DEPTH

3350'

## 20. ROTARY OR CABLE TOOLS

rotary

## 21. ELEVATIONS (Show whether DF, RT, GR, etc.)

4079.1 GL

## 22. APPROX. DATE WORK WILL START\*

9/23/69

## 23.

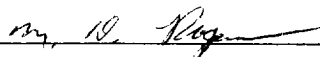
## PROPOSED CASING AND CEMENTING PROGRAM

SIZE OF HOLE	SIZE OF CASING	WEIGHT PER FOOT	SETTING DEPTH	QUANTITY OF CEMENT
11"	8-5/8"	20#	300'	225 sms to circulate
7-7/8"	4-1/2"	9.5#	3350'	150 sms - top 2500'

IN ABOVE SPACE DESCRIBE PROPOSED PROGRAM: If proposal is to deepen or plug back, give data on present productive zone and proposed new productive zone. If proposal is to drill or deepen directionally, give pertinent data on subsurface locations and measured and true vertical depths. Give blowout preventer program, if any.

## 24.

SIGNED



TITLE Vice President

DATE 9/17/69

(This space for Federal or State office use)

PERMIT NO.

APPROVAL DATE

APPROVED BY

CONDITIONS OF APPROVAL, IF ANY:

SEP 19 1969

R. L. BEEKMA

ACTING DISTRICT

TITLE IS RECORDED IF OPERATIONS  
ARE NOT COMMENCED WITHIN 3 MONTHS.THIS APPROVAL  
EXPIRES DEC 19 1969

DATE

\*See Instructions On Reverse Side

RECORDED  
SEP 10 1969

**NEW MEXICO OIL CONSERVATION COMMISSION  
WELL LOCATION AND ACREAGE DEDICATION PLAT**

Form C-122  
Supersedes C-128  
Effective 1-1-65

All distances must be from the outer boundaries of the Section

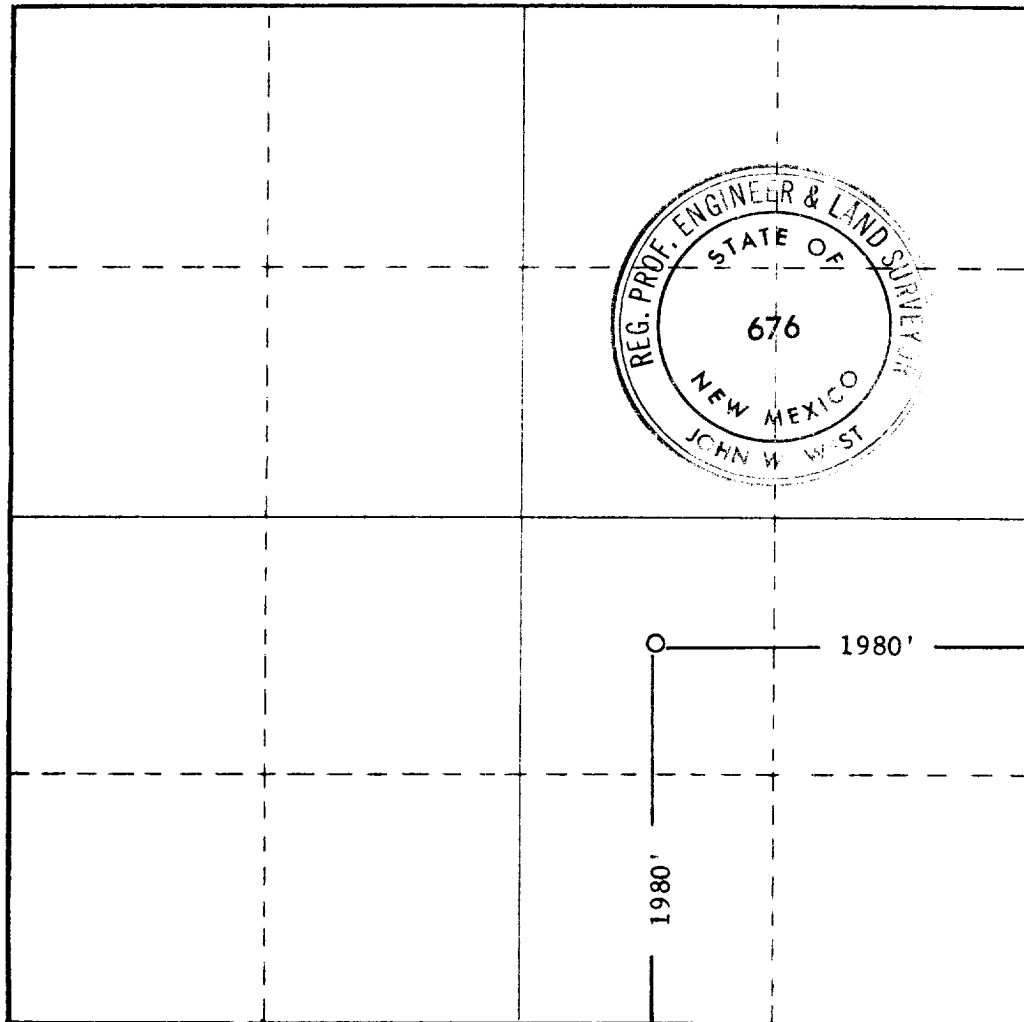
Operator <b>ADOBE OIL COMPANY</b>			Lease <b>FEDERAL PETTERSON</b>		Well No. <b>1</b>
Unit Letter <b>J</b>	Section <b>6</b>	Township <b>9 SOUTH</b>	Range <b>30 EAST</b>	County <b>CHAVES</b>	
Actual Footage Location of Well: <div style="display: flex; justify-content: space-between;"> <span><b>1980</b> feet from the <b>SOUTH</b> line and <b>1980</b> feet from the <b>EAST</b> line</span> </div>					
Ground Level Elev. <b>4079.1</b>	Producing Formation <b>San Andres</b>	Pool <b>Cato</b>		Dedicated Acreage: <b>40</b> Acres	

1. Outline the acreage dedicated to the subject well by colored pencil or hachure marks on the plat below.
2. If more than one lease is dedicated to the well, outline each and identify the ownership thereof (both as to working interest and royalty).
3. If more than one lease of different ownership is dedicated to the well, have the interests of all owners been consolidated by communitization, unitization, force-pooling, etc?

☐ Yes    ☐ No    If answer is "yes," type of consolidation \_\_\_\_\_

If answer is "no," list the owners and tract descriptions which have actually been consolidated. (Use reverse side of this form if necessary.) \_\_\_\_\_

No allowable will be assigned to the well until all interests have been consolidated (by communitization, unitization, forced-pooling, or otherwise) or until a non-standard unit, eliminating such interests, has been approved by the Commission.



**CERTIFICATION**

I hereby certify that the information contained herein is true and complete to the best of my knowledge and belief.

*M. D. Rogers*

Name

**Vice President**

Position

**Adobe Oil Company**

Company

**September 16, 1969**

Date

**RECEIVED**  
**SEP 18 1969**

I hereby certify that the well location shown on this plat is plotted from field notes of actual surveys made by me or under my supervision, and that the same is true and correct to the best of my knowledge and belief.

Date Surveyed

**9-12-1969**

Registered Professional Engineer and/or Land Surveyor

*John W. West*

Certificate No.

**676**

