

UNITED STATES
DEPARTMENT OF THE INTERIOR

GEOLOGICAL SURVEY

APPLICATION FOR PERMIT TO DRILL, DEEPEN, OR PLUG BACK

1a. TYPE OF WORK

DRILL ☒DEEPEN ☐PLUG BACK ☐

b. TYPE OF WELL

OIL
WELL ☒GAS
WELL ☐OTHER ☐SINGLE
ZONE ☒MULTIPLE
ZONE ☐

2. NAME OF OPERATOR

McGrath & Smith, Inc.

3. ADDRESS OF OPERATOR

418 Building of the Southwest, Midland, Texas 79701

4. LOCATION OF WELL (Report location clearly and in accordance with any State requirements.)*

At surface

660 FSL and 1980 FEL

At proposed prod. zone

Same

14. DISTANCE IN MILES AND DIRECTION FROM NEAREST TOWN OR POST OFFICE*

22 miles North of Maljamar

15. DISTANCE FROM PROPOSED*

LOCATION TO NEAREST
PROPERTY OR LEASE LINE, FT.
(Also to nearest drlg. unit line, if any)18. DISTANCE FROM PROPOSED LOCATION*
TO NEAREST WELL, DRILLING, COMPLETED,
OR APPLIED FOR, ON THIS LEASE, FT.

First well

16. NO. OF ACRES IN LEASE

40

19. PROPOSED DEPTH

2900

17. NO. OF ACRES ASSIGNED
TO THIS WELL

40

20. ROTARY OR CABLE TOOLS

Rotary

21. ELEVATIONS (Show whether DF, RT, GR, etc.)

GL 3924

22. APPROX. DATE WORK WILL START*

7-25-70

23.

PROPOSED CASING AND CEMENTING PROGRAM

SIZE OF HOLE	SIZE OF CASING	WEIGHT PER FOOT	SETTING DEPTH	QUANTITY OF CEMENT
12 1/4"	8 5/8	20	350'	150 sx.
7 7/8"	4 1/2	9.5	2900'	150 sx.

KB elevation not available yet.

BOP will be in operation from 350' to TD.

RECEIVED

JUL 16 1970

RECEIVED

JUL 15 1970

U. S. GEOLOGICAL SURVEY
ARTESIA, NEW MEXICO

ARTESIA, NEW MEXICO

IN ABOVE SPACE DESCRIBE PROPOSED PROGRAM: If proposal is to deepen or plug back, give data on present productive zone and proposed new productive zone. If proposal is to drill or deepen directionally, give pertinent data on subsurface locations and measured and true vertical depths. Give blowout preventer program, if any.

24.

SIGNED

R. L. Beekma

TITLE

Sup't.

DATE

7-14-70

(This space for Federal or State office use)

PERMIT NO.

APPROVAL DATE

DATE

APPROVED
JUL 1 1970
R. L. BEEKMA
ACTING DISTRICT SUPERVISORTHIS APPROVAL IS RESCINDED IF OPERATIONS
ARE NOT COMMENCED WITHIN 3 MONTHS.
OCT 15 1970

NEW MEXICO OIL CONSERVATION COMMISSION
WELL LOCATION AND ACREAGE DEDICATION PLAN

Form C-102
Supersedes C-128
Effective 1-1-65

All distances must be from the outer boundaries of the Section.

Operator McGRATH & SMITH, INC.		Lease CHORNEY-FEDERAL		Well No. I
Unit Letter "O"	Section 15	Township 13-S	Range 30-E	County CHAVES
Actual Footage Location of Well: 660 feet from the SOUTH line and 1980 feet from the EAST line				
Ground Level Elev. 3924	Producing Formation SAN ANDRES	Pool WILDCAT	Dedicated Acreage: 40 Acres	

1. Outline the acreage dedicated to the subject well by colored pencil or hachure marks on the plat below.
2. If more than one lease is dedicated to the well, outline each and identify the ownership thereof (both as to working interest and royalty).
3. If more than one lease of different ownership is dedicated to the well, have the interests of all owners been consolidated by communitization, unitization, force-pooling, etc?

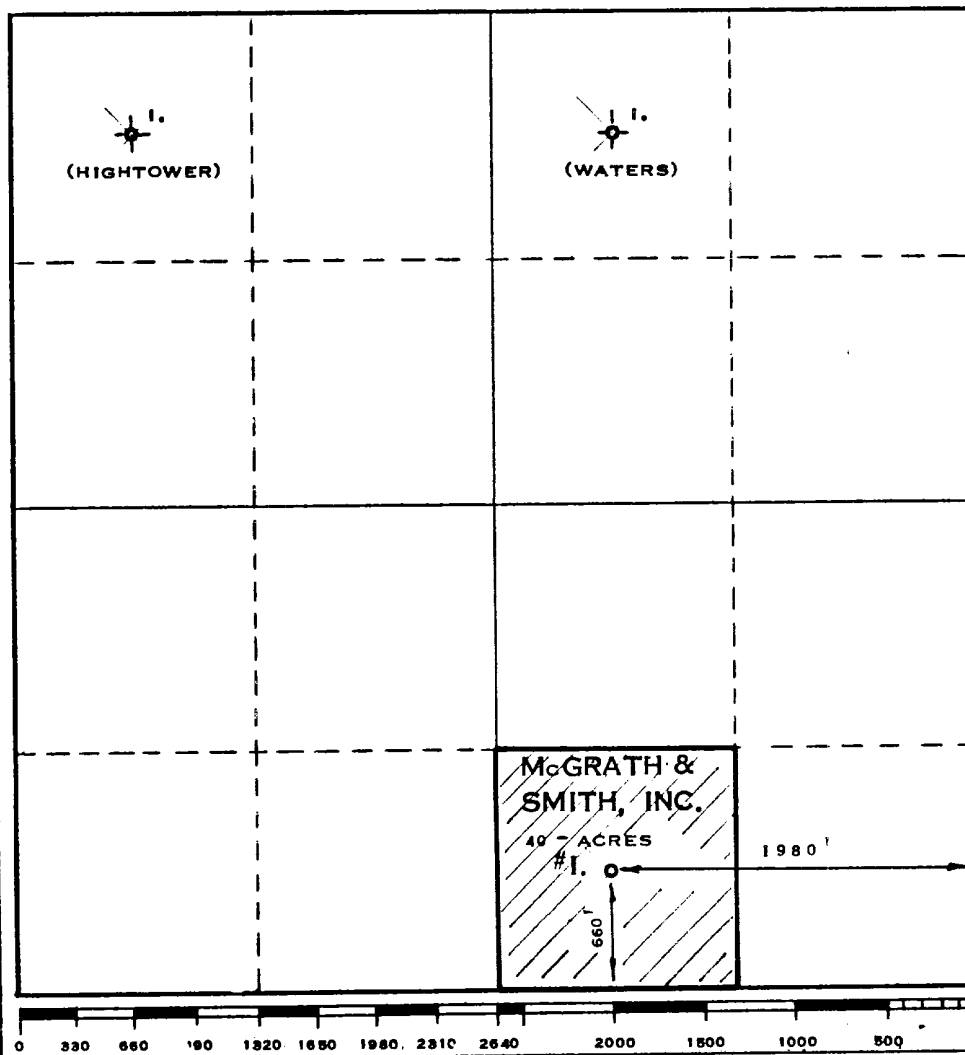
☐ Yes ☐ No If answer is "yes," type of consolidation _____

If answer is "no," list the owners and tract descriptions which have actually been consolidated. (Use reverse side of this form if necessary.) _____

No allowable will be assigned to the well until all interests have been consolidated (by communitization, unitization, forced-pooling, or otherwise) or until a non-standard unit, eliminating such interests, has been approved by the Commission.

RECEIVED

JUL 16 1970



CERTIFICATION

I hereby certify that the information contained herein is true and complete to the best of my knowledge and belief.

Name
J. B. Taylor
Position
SUPV
Company
McGRATH & SMITH, INC.

Date
JULY 14, 1970

I hereby certify that the well location shown on this plat was plotted from field notes of actual surveys made by me or under my supervision and that the same is true and correct to the best of my knowledge and belief.

Date Surveyed
JULY 13, 1970

Registered Professional Engineer and Land Surveyor
Max A. Schumann
MAX A. SCHUMANN

Certificate No.

1510

