

UNITED STATES
DEPARTMENT OF THE INTERIOR
GEOLOGICAL SURVEY

APPLICATION FOR PERMIT TO DRILL, DEEPEN, OR PLUG BACK

1a. TYPE OF WORK

DRILL ☒

DEEPEN ☐

PLUG BACK ☐

b. TYPE OF WELL

OIL
WELL ☒

GAS
WELL ☐

OTHER

SINGLE
ZONE ☐

MULTIPLE
ZONE ☐

2. NAME OF OPERATOR

McGrath & Smith, Inc.

3. ADDRESS OF OPERATOR

418 Bldg. of the Southwest, Midland, Texas 79701

4. LOCATION OF WELL (Report location clearly and in accordance with any State requirements.)*

At surface

1980' FNL and 1980' FEL

At proposed prod. zone

Same

14. DISTANCE IN MILES AND DIRECTION FROM NEAREST TOWN OR POST OFFICE*

28 miles North of Maljamar.

15. DISTANCE FROM PROPOSED*

LOCATION TO NEAREST
PROPERTY OR LEASE LINE, FT.
(Also to nearest drlg. unit line, if any)

16. NO. OF ACRES IN LEASE

40

17. NO. OF ACRES ASSIGNED
TO THIS WELL

40

18. DISTANCE FROM PROPOSED LOCATION*
TO NEAREST WELL, DRILLING, COMPLETED,
OR APPLIED FOR, ON THIS LEASE, FT.

19. PROPOSED DEPTH

2850

20. ROTARY OR CABLE TOOLS

Rotary

21. ELEVATIONS (Show whether DF, RT, GR, etc.)

GL 3986

22. APPROX. DATE WORK WILL START*

8-1-70

23.

PROPOSED CASING AND CEMENTING PROGRAM

SIZE OF HOLE	SIZE OF CASING	WEIGHT PER FOOT	SETTING DEPTH	QUANTITY OF CEMENT
12 1/4	8 5/8	20	350	150 sx.
7 7/8	4 1/2	9.5	2850	150 sx.

KB elevation not available yet.

RECEIVED

JUL 22 1970

D. C. C.
ARTESIA, N.M.

RECEIVED

JUL 21 1970

U.S. GEOLOGICAL SURVEY
ARTESIA, N.M.

IN ABOVE SPACE DESCRIBE PROPOSED PROGRAM: If proposal is to deepen or plug back, give data on present productive zone and proposed new productive zone. If proposal is to drill or deepen directionally, give pertinent data on subsurface locations and measured and true vertical depths. Give blowout preventer program, if any.

24.

SIGNED

J. B. Taylor

TITLE

Sup't.

DATE

7-20-70

(This space for Federal or State office use)

PERMIT NO.

APPROVALS

THIS APPROVAL IS RESCINDED IF OPERATIONS
ARE NOT COMMENCED WITHIN 3 MONTHS.
EXPIRES OCT 21 1970

DATE

*See Instructions On Reverse Side

APPROVED

JUL 21 1970

R. L. BEEKMA

ACTING DISTRICT MANAGER

RECEIVED

JUL 24 1970

ONE COPY OF THE REPORT
HAS BEEN RECEIVED

N MICO OIL CONSERVATION COMMISS
WELL LOCATION AND ACREAGE DEDICATION PLAT

Form C-102
Supersedes C-128
Effective 1-1-65

All distances must be from the outer boundaries of the Section.

Operator McGRATH & SMITH, INC.		Lease SAUER - FEDERAL		Well No. I
Unit Letter "G"	Section 23	Township 12-S	Range 30-E	County CHAVES
Actual Footage Location of Well: <div style="display: flex; justify-content: space-between;"> 1980 feet from the NORTH line and 1980 feet from the EAST line </div>				
Ground Level Elev. 3986	Producing Formation SAN ANDRES	Pool WILDCAT	Dedicated Acreage: 40 Acres	

- Outline the acreage dedicated to the subject well by colored pencil or hachure marks on the plat below.
- If more than one lease is dedicated to the well, outline each and identify the ownership thereof (both as to working interest and royalty).
- If more than one lease of different ownership is dedicated to the well, have the interests of all owners been consolidated by communitization, unitization, force-pooling, etc?

☐ Yes ☐ No If answer is "yes," type of consolidation _____

RECEIVED

If answer is "no," list the owners and tract descriptions which have actually been consolidated. (Use reverse side of this form if necessary.)

No allowable will be assigned to the well until all interests have been consolidated (by communitization, unitization, forced-pooling, or otherwise) or until a non-standard unit, eliminating such interests, has been approved by the Commission.

CERTIFICATION

I hereby certify that the information contained herein is true and complete to the best of my knowledge and belief.

Name

Position

Company

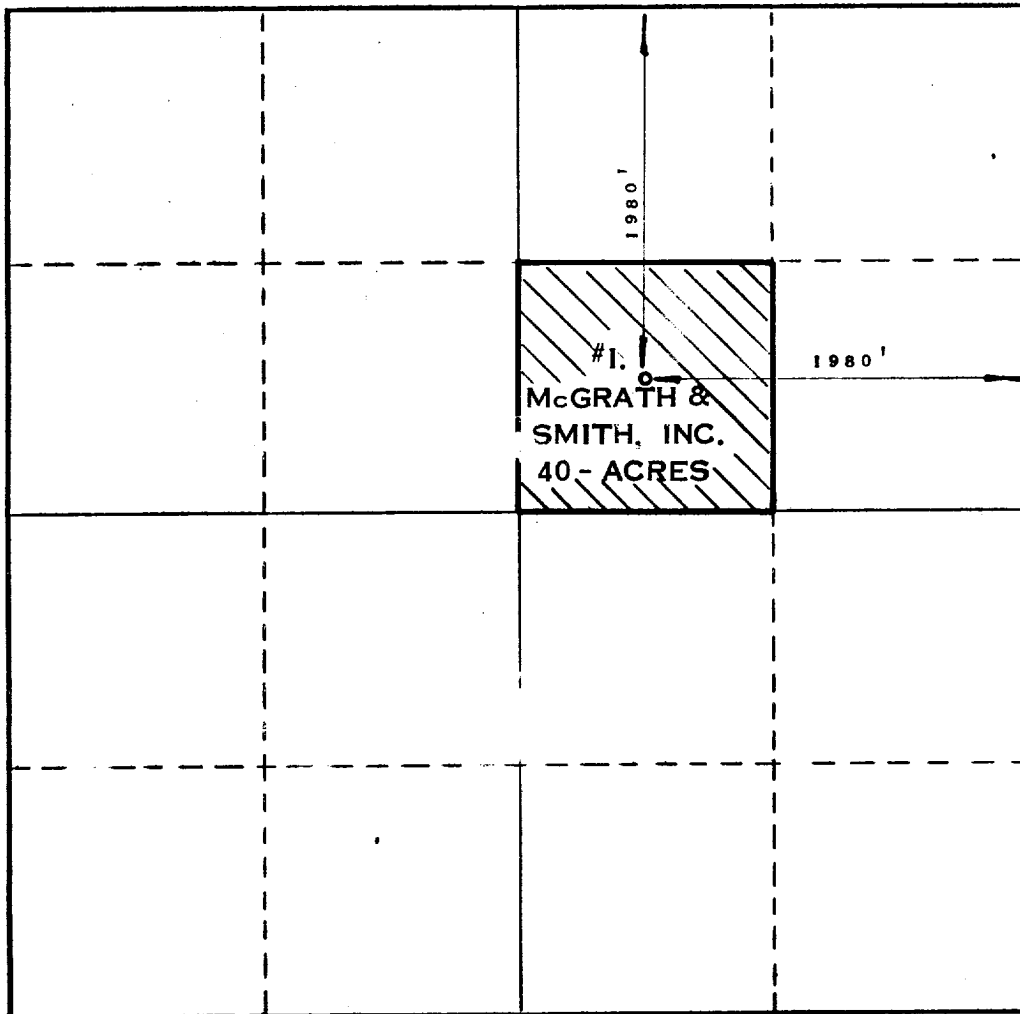
Date

I hereby certify that the well location shown on this plat is correct in the field notes and surveys made by me or under my supervision, and that the same is true and correct to the best of my knowledge and belief.

Date Surveyed

Registered Professional Engineer and Land Surveyor

Certificate No.



0 330 660 990 1320 1650 1980 2310 2640 2000 1500 1000 500 0

1510

NEW MEXICO

RECEIVED

JUL 24 1970

OIL & GAS DIVISION
RECEIVED

1.