

**NEW MEXICO OIL CONSERVATION COMMISSION
WELL LOCATION AND ACREAGE DEDICATION PLAT**

Form C-102
Supersedes C-128
Effective 1-1-65

All distances must be from the outer boundaries of the Section.

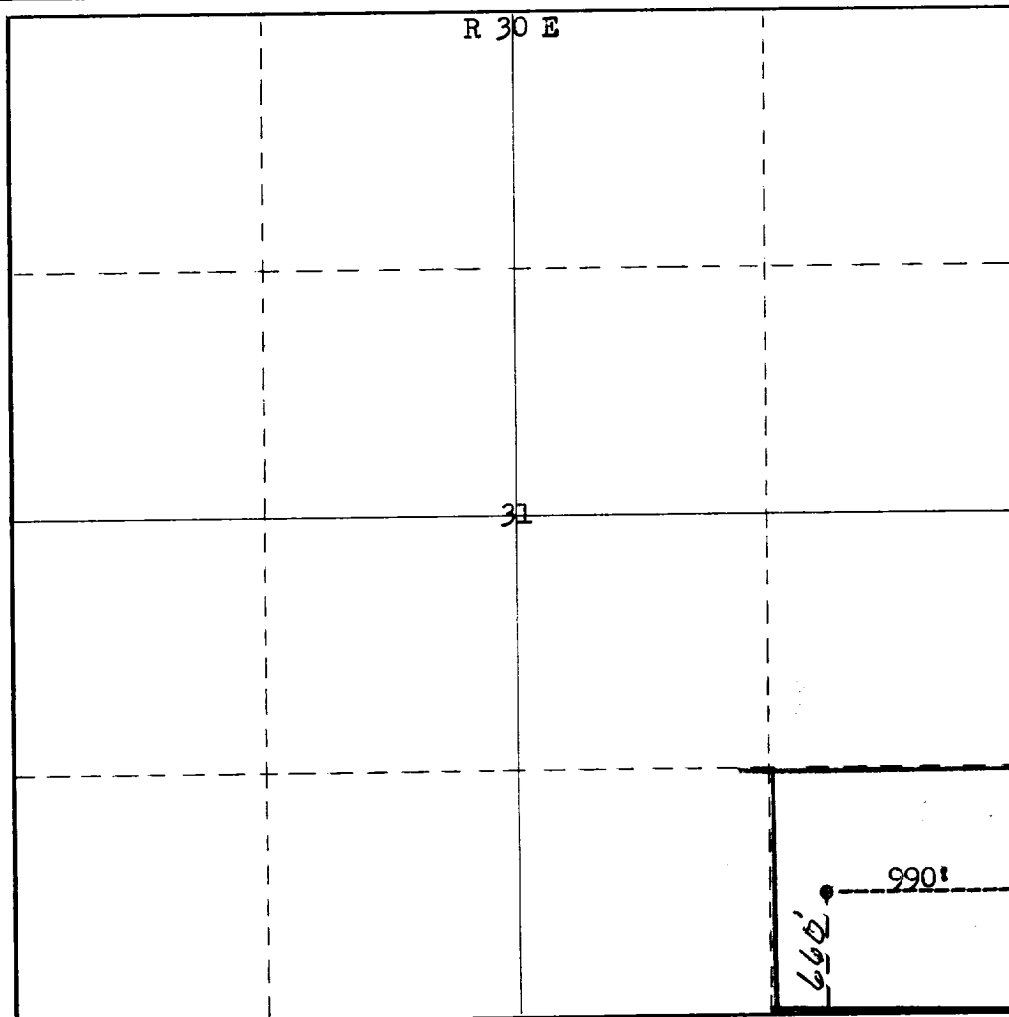
Operator Wolfson Oil Company			Lease Amerada East B Federal		Well No. 1
Unit Letter P	Section 31	Township 14 S	Range 30 E	County Chaves	
Actual Footage Location of Well: 660' feet from the South line and 990' feet from the East line					
Ground Level Elev. 3889	Producing Formation Queen		Pool Double L		Dedicated Acreage: 40 Acres

1. Outline the acreage dedicated to the subject well by colored pencil or hachure marks on the plat below.
2. If more than one lease is dedicated to the well, outline each and identify the ownership thereof (both as to working interest and royalty).
3. If more than one lease of different ownership is dedicated to the well, have the interests of all owners been consolidated by communitization, unitization, force-pooling, etc?

☐ Yes ☐ No If answer is "yes," type of consolidation _____

If answer is "no," list the owners and tract descriptions which have actually been consolidated. (Use reverse side of this form if necessary.) _____

No allowable will be assigned to the well until all interests have been consolidated (by communitization, unitization, forced-pooling, or otherwise) or until a non-standard unit, eliminating such interests, has been approved by the Commission.



CERTIFICATION

I hereby certify that the information contained herein is true and complete to the best of my knowledge and belief.

H.G. Freedman

Name

H.G. Freedman

Position

Prod. Engr.

Company

Wolfson Oil Co.

Date

7-29-71

I hereby certify that the well location shown on this plat was obtained from field notes of actual surveys made by me or under my supervision and that the same is true and correct to the best of my knowledge and belief.

Date Surveyed

July 12th 1971

Registered Professional Engineer
and/or Land Surveyor

James H. Brown

Certificate No.

542

T
14
S

RECEIVED

JUL 1 1971

OIL CONSERVATION COMM.
WASH. D. C.

RECEIVED

JUL 16 1971

O. C. C.
OFFICE