

UNITED STATES
DEPARTMENT OF THE INTERIOR
GEOLOGICAL SURVEY

APPLICATION FOR PERMIT TO DRILL, DEEPEN, OR PLUG BACK

1a. TYPE OF WORK

DRILL ☒ AmendedDEEPEN ☐PLUG BACK ☐

b. TYPE OF WELL

OIL WELL ☒GAS WELL ☐OTHER ☐SINGLE ZONE ☐MULTIPLE ZONE ☐

2. NAME OF OPERATOR

Continental Oil Company

3. ADDRESS OF OPERATOR

Box 460

Hobbs, New Mexico

4. LOCATION OF WELL (Report location clearly and in accordance with any State requirements.)

At surface

940' FSL and 2310' FEL of Sec 28

At proposed prod. zone

Same

14. DISTANCE IN MILES AND DIRECTION FROM NEAREST TOWN OR POST OFFICE*

15. DISTANCE FROM PROPOSED*

LOCATION TO NEAREST

PROPERTY OR LEASE LINE, FT.

(Also to nearest drlg. unit line, if any)

18. DISTANCE FROM PROPOSED LOCATION*

TO NEAREST WELL, DRILLING, COMPLETED,

OR APPLIED FOR, ON THIS LEASE, FT.

21. ELEVATIONS (Show whether DF, RT, GR, etc.)

3908.6' on

16. NO. OF ACRES IN LEASE

1120

19. PROPOSED DEPTH

2170'

17. NO. OF ACRES ASSIGNED TO THIS WELL

40

20. ROTARY OR CABLE TOOLS

rotary

22. APPROX. DATE WORK WILL START*

12-20-71

23.

PROPOSED CASING AND CEMENTING PROGRAM

SIZE OF HOLE	SIZE OF CASING	WEIGHT PER FOOT	SETTING DEPTH	QUANTITY OF CEMENT
12 1/4"	8 5/8"	20#	500'	Circ
7 7/8"	4 1/2"	7.5#	2170'	200 SKS

It is proposed to drill a straight hole to 2170' and complete as a Vest Ranch Queen producer.

Note: This permit to drill replaces the one approved on 12-6-71 due to location change.

IN ABOVE SPACE DESCRIBE PROPOSED PROGRAM: If proposal is to deepen or plug back, give data on present productive zone and proposed new productive zone. If proposal is to drill or deepen directionally, give pertinent data on subsurface locations and measured and true vertical depths. Give blowout preventer program, if any.

24.

SIGNED

[Signature]

TITLE

Admin Supervisor

DATE

12-20-71

(This space for Federal or State office use)

APPROVED

PERMIT NO.

1014 1971

APPROVED

H. L. BEEKMANN

ACTING DISTRICT ENGINEER

THIS APPROVAL IS RESCINDED IF OPERATIONS ARE NOT COMMENCED WITHIN 3 MONTHS.

EXPIRES MAR 14 1972

DATE

USGS-Artesia (5) File *See Instructions On Reverse Side

NEW MEXICO OIL CONSERVATION COMMISSION
WELL LOCATION AND ACREAGE DEDICATION PL.

Form C-102
Supersedes C-128
Effective 1-1-65

All distances must be from the outer boundaries of the Section.

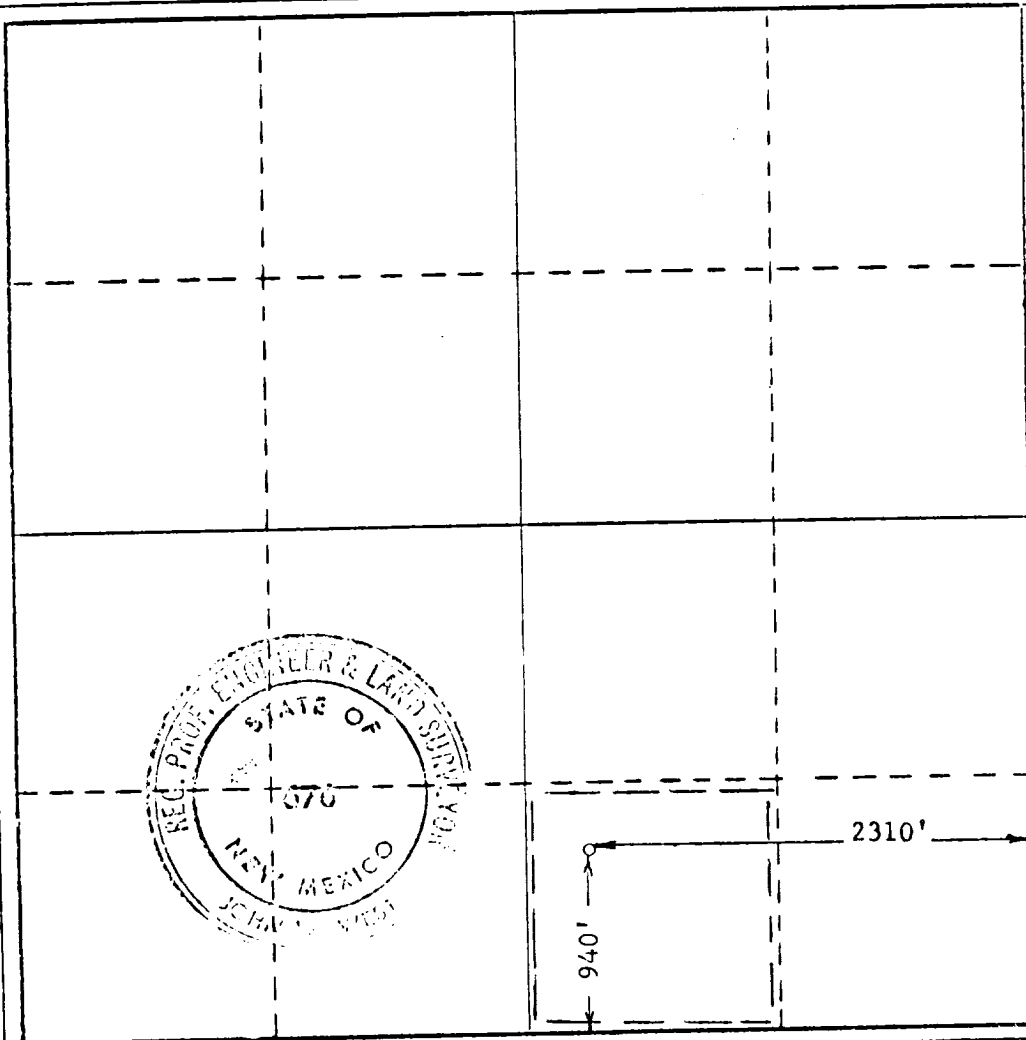
Operator CONTINENTAL OIL CO.			Lease W. R. MEANS		Well No. 3
Unit Letter O	Section 28	Township 14 SOUTH	Range 30 EAST	County CHAVES	
Actual Footage Location of Well: <div style="display: flex; justify-content: space-between;"> 940 feet from the SOUTH line and 2310 feet from the EAST line </div>					
Ground Level Elev. 3908.6	Producing Formation Queen	Pool Vest Ranch Queen	Dedicated Acreage: 40		

1. Outline the acreage dedicated to the subject well by colored pencil or hatchure marks on the plat below.
2. If more than one lease is dedicated to the well, outline each and identify the ownership thereof (both as to working interest and royalty).
3. If more than one lease of different ownership is dedicated to the well, have the interests of all owners been consolidated by communitization, unitization, force-pooling, etc?

☐ Yes ☐ No If answer is "yes," type of consolidation _____

If answer is "no," list the owners and tract descriptions which have actually been consolidated. (Use reverse side of this form if necessary.) _____

No allowable will be assigned to the well until all interests have been consolidated (by communitization, unitization, forced-pooling, or otherwise) or until a non-standard unit, eliminating such interests, has been approved by the Commission.



CERTIFICATION

I hereby certify that the information contained herein is true and complete to the best of my knowledge and belief.

Name
[Signature]
Position
Admin Supervisor
Company
Continental Oil Co
Date
December 13, 1971

RECEIVED
I hereby certify that the well location shown on this plat was from field notes of actual surveys made by me or under my supervision, and that the same is true and correct to the best of my knowledge and belief.
DEC 14 1971
ARTES

Date Surveyed
DECEMBER 2, 1971
Registered Professional Engineer
and/or Land Surveyor

[Signature]
Certificate No. **676**