

NEW MEXICO OIL CONSERVATION COMMISSION
WELL LOCATION AND ACREAGE DEDICATION PLAT

Form C-192
Supersedes C-125
Effective 1-1-65

All distances must be from the outer boundaries of the Section

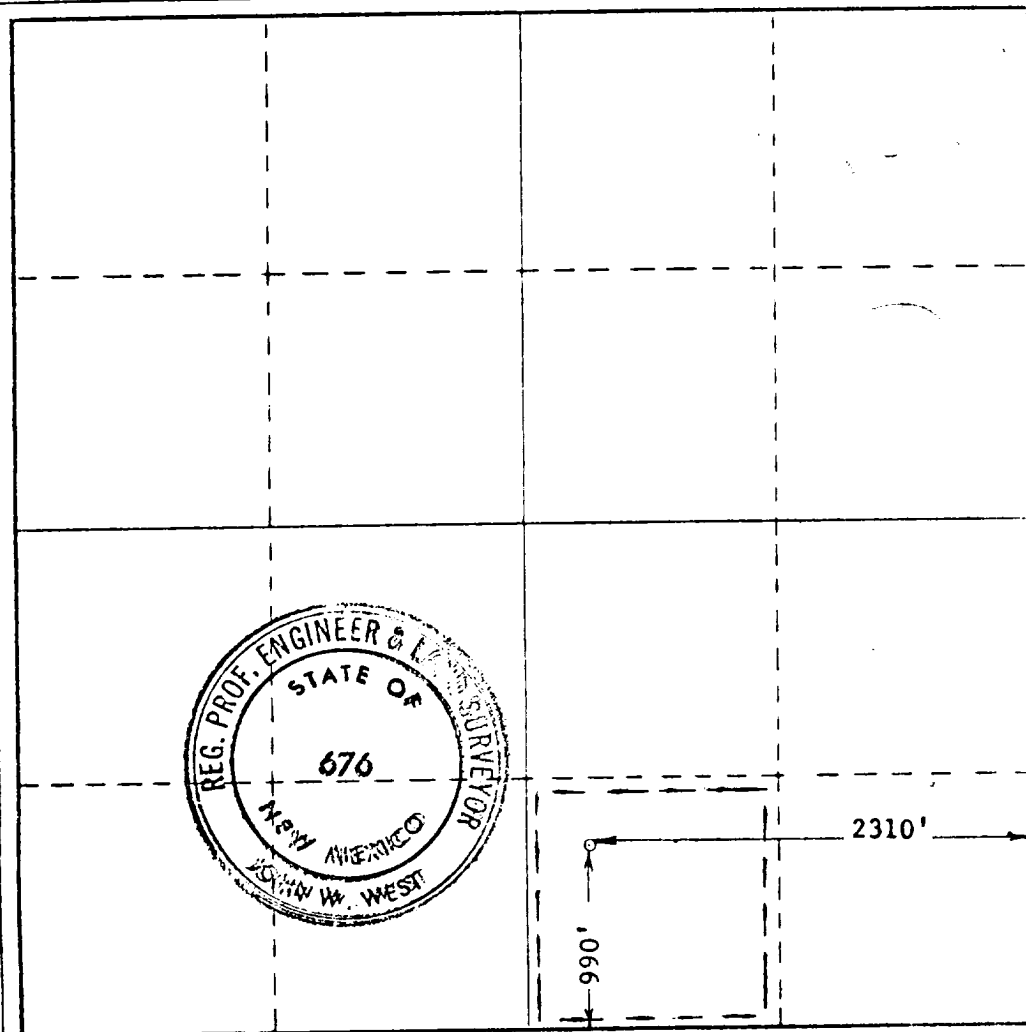
Operator CONTINENTAL OIL CO.		Lease W. R. MEANS		Well No. 3
Unit Letter O	Section 28	Township 14 SOUTH	Range 30 EAST	County CHAVES
Actual Footage Location of Well: 990 feet from the SOUTH line and 2310 feet from the EAST line				
Ground Level Elev. 3908.6	Producing Formation Queen	Pool West Ranch Queen	Dedicated Acreage 40	

1. Outline the acreage dedicated to the subject well by colored pencil or hatchure marks on the plat below.
2. If more than one lease is dedicated to the well, outline each and identify the ownership thereof (both as to working interest and royalty).
3. If more than one lease of different ownership is dedicated to the well, have the interests of all owners been consolidated by communitization, unitization, force-pooling, etc?

☐ Yes ☐ No If answer is "yes," type of consolidation _____

If answer is "no," list the owners and tract descriptions which have actually been consolidated. (Use reverse side of this form if necessary.) _____

No allowable will be assigned to the well until all interests have been consolidated (by communitization, unitization, forced-pooling, or otherwise) or until a non-standard unit, eliminating such interests, has been approved by the Commission.



CERTIFICATION

I hereby certify that the information contained herein is true and complete to the best of my knowledge and belief.

Name *[Signature]*
Position *Admin. Supervisor*
Company *Continental Oil Co*
Date *December 3, 1971*

RECEIVED

I hereby certify that the information shown on this plat is true and complete to the best of my knowledge and belief.
DEC 6 1971
U. S. GEOLOGICAL SURVEY
ARTESIA, NEW MEXICO

Date Surveyed
DECEMBER 2, 1971

Registered Professional Engineer and/or Land Surveyor

[Signature]
Certificate No. **676**

RECEIVED

DEC 7 1971

OIL CONSERVATION CO. AM.
HOBBES

RECEIVED

DEC 7 1971

G. C. S.
ARTESIA, CALIF.