

UNITED STATES
DEPARTMENT OF THE INTERIOR
GEOLOGICAL SURVEY

APPLICATION FOR PERMIT TO DRILL, DEEPEN, OR PLUG BACK

1a. TYPE OF WORK
DRILL ☒ DEEPEN ☐ PLUG BACK ☐

b. TYPE OF WELL
OIL WELL ☒ GAS WELL ☐ OTHER ☐ SINGLE ZONE ☐ MULTIPLE ZONE ☐

2. NAME OF OPERATOR
Continental Oil Company

3. ADDRESS OF OPERATOR
Box 460 Hobbs, New Mexico 88240

4. LOCATION OF WELL (Report location clearly and in accordance with any State requirements.)
At surface
1650' FSL and 2310' FWL of sec 28
At proposed prod. zone
Same

14. DISTANCE IN MILES AND DIRECTION FROM NEAREST TOWN OR POST OFFICE*

10. DISTANCE FROM PROPOSED* LOCATION TO NEAREST PROPERTY OR LEASE LINE, FT. (Also to nearest drlg. unit line, if any)

18. DISTANCE FROM PROPOSED LOCATION* TO NEAREST WELL, DRILLING, COMPLETED, OR APPLIED FOR, ON THIS LEASE, FT.

21. ELEVATIONS (Show whether DF, RT, GR, etc.)
3892.5' gr

23. PROPOSED CASING AND CEMENTING PROGRAM

SIZE OF HOLE	SIZE OF CASING	WEIGHT PER FOOT	SETTING DEPTH	QUANTITY OF CEMENT
12 1/4"	8 5/8"	20 lb	500'	Circ
7 7/8"	4 1/2"	9.5 lb	2170'	200 SKS

5. LEASE DESIGNATION AND SERIAL NO.

NM 0343765(a)

6. IF INDIAN, ALLOTTEE OR TRIBE NAME

7. UNIT AGREEMENT NAME

8. FARM OR LEASE NAME

WR Means

9. WELL NO.

3

10. FIELD AND POOL, OR WILDCAT

Vest Ranch Queen

11. SEC., T., R., M., OR BLK. AND SURVEY OR AREA

Sec 28, T-14S, R-30E

12. COUNTY OR PARISH 13. STATE

Chaves N. Mex

16. NO. OF ACRES IN LEASE

1120

17. NO. OF ACRES ASSIGNED TO THIS WELL

40

22. APPROX. DATE WORK WILL START*

8-30-71

20. ROTARY OR CABLE TOOLS

rotary

It is proposed to drill a straight hole to 2170' and complete as a Vest Ranch Queen producer.

RECEIVED
AUG 27 1971
U. S. GEOLOGICAL SURVEY
ARTESIA, NEW MEXICO

IN ABOVE SPACE DESCRIBE PROPOSED PROGRAM: If proposal is to deepen or plug back, give data on present productive zone and proposed new productive zone. If proposal is to drill or deepen directionally, give pertinent data on subsurface locations and measured and true vertical depths. Give blowout preventer program, if any.

24. SIGNED [Signature] TITLE Admin Supervisor DATE 8-26-71

(This space for Federal or State office use)

APPROVED

PERMIT NO. AUG 27 1971

APPROVED BY [Signature]

CONDITIONS OF APPROVAL, IF ANY:

H. L. BEERMAN

ACTING DISTRICT ENGINEER

THIS APPROVAL IS RESCINDED IF OPERATIONS ARE NOT COMMENCED WITHIN 3 MONTHS DATE
EXPIRES NOV 27 1971

DATE

USGS-Artesia(5) File

*See Instructions On Reverse Side

RECEIVED

AUG 8 1971

OIL CONSERVATION COMM.
HOBBS, N. M.

NEW MEXICO OIL CONSERVATION COMMISSION
WELL LOCATION AND ACREAGE DEDICATION PLAT

Form C-102
Supersedes C-128
Effective 1-1-65

All distances must be from the outer boundaries of the Section

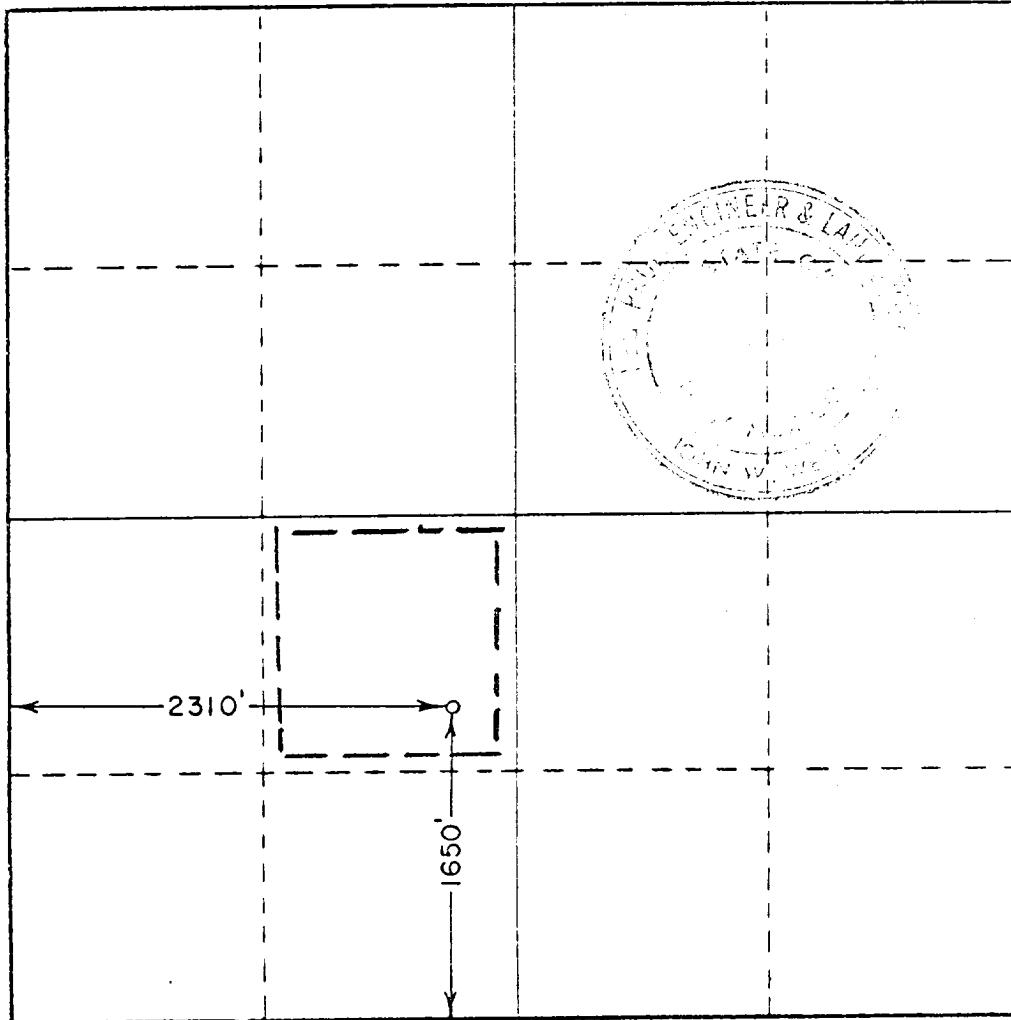
Operator CONTINENTAL OIL COMPANY			Lease W. R. MEANS		Well No. 3
Unit Letter K	Section 28	Township 14 SOUTH	Range 30 EAST	County CHAVES	
Actual Footage Location of Well: 1650 feet from the SOUTH line and 2310 feet from the WEST line					
Ground Level Elev. 3892.5	Producing Formation Queen		Pool Vest Ranch Queen	Dedicated Acreage: 40 Acres	

1. Outline the acreage dedicated to the subject well by colored pencil or hachure marks on the plat below.
2. If more than one lease is dedicated to the well, outline each and identify the ownership thereof (both as to working interest and royalty).
3. If more than one lease of different ownership is dedicated to the well, have the interests of all owners been consolidated by communitization, unitization, force-pooling, etc?

☐ Yes ☐ No If answer is "yes," type of consolidation _____

If answer is "no," list the owners and tract descriptions which have actually been consolidated. (Use reverse side of this form if necessary.) _____

No allowable will be assigned to the well until all interests have been consolidated (by communitization, unitization, forced-pooling, or otherwise) or until a non-standard unit, eliminating such interests, has been approved by the Commission.



CERTIFICATION

I hereby certify that the information contained herein is true and complete to the best of my knowledge and belief.

Signature: *[Signature]*
Position: *Admin. Supervisor*
Company: *Continental Oil Co*
Date: *August 26, 1971*

I hereby certify that the well location shown on this plat was plotted from field notes of actual surveys made by me or under my supervision, and that the same is true and correct to the best of my knowledge and belief.

Date Surveyed

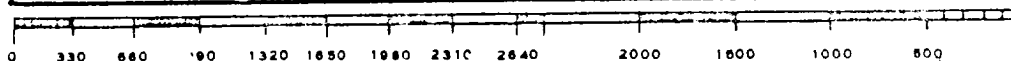
AUGUST 24, 1971

Registered Professional Engineer and/or Land Surveyor

Signature: *John W. West*

Certificate No.

676



RECEIVED

AUG 2 1971

OIL CONSERVATION COMM.
HOBBBS, N. M.

113

RECEIVED

AUG 30 1971

O. C. C.
ARTESIA, OFFICE