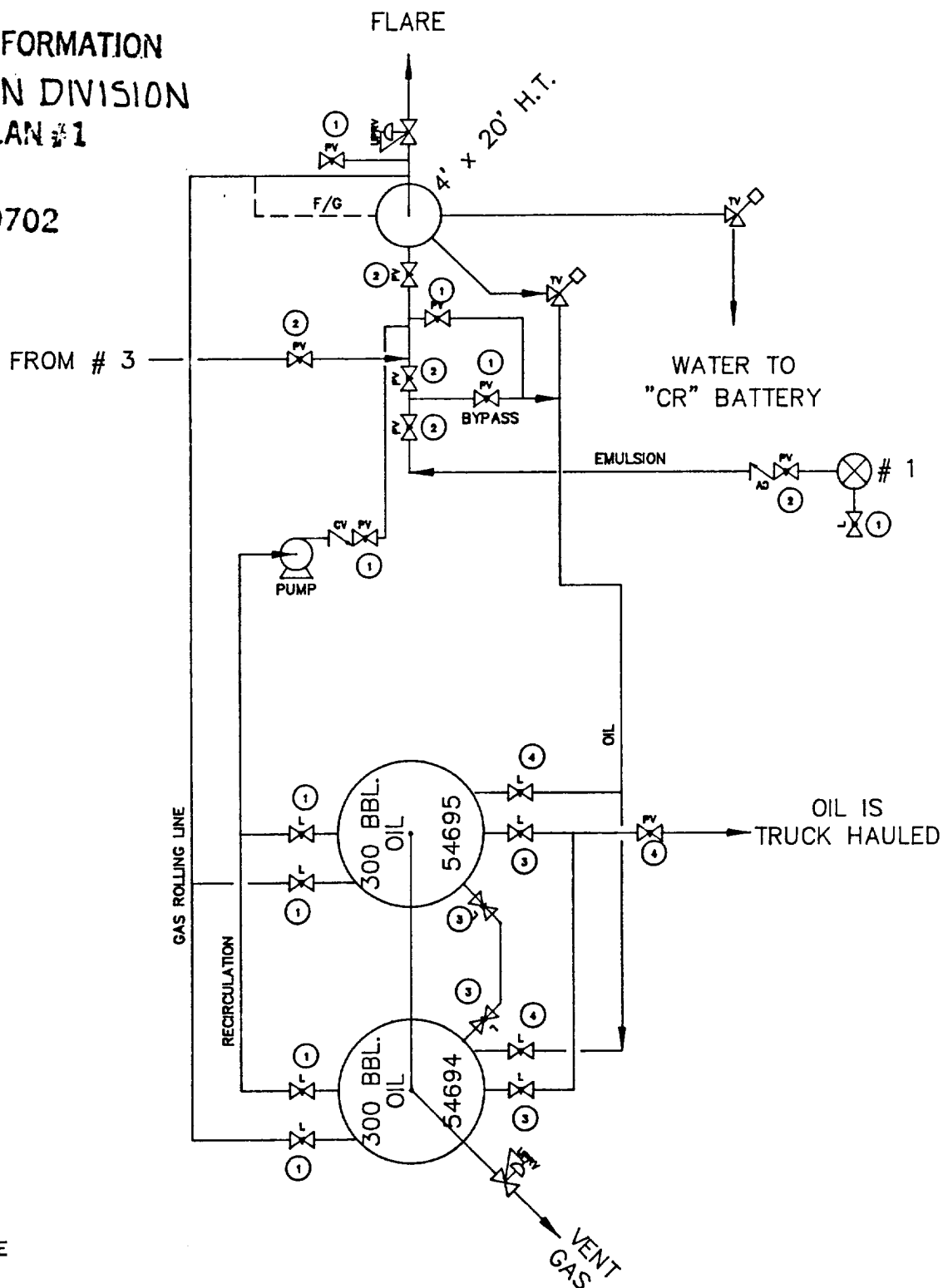


CONFIDENTIAL INFORMATION
 SOUTHWESTERN DIVISION
 SITE SECURITY PLAN #1
 P. O. BOX 3116
 Midland, Texas 79702



VALVE LEGEND

- ⌘ SEALED LOCKED VALVE
- ① NORMALLY CLOSED
- ② NORMALLY OPEN
- ③ OPEN DURING PRODUCTION:
CLOSED DURING RUN
- ④ CLOSED DURING PRODUCTION:
OPEN DURING RUN

NOTES: LSE. NO. NM 055564, 660 FNL & 660 FEL

					PREPARED BY: D.A.C./1-27-87	EXXON EXXON COMPANY USA PRODUCTION DEPARTMENT SOUTHWESTERN DIVISION			ISLER FEDERAL T/B # 1 SEC.31, T9S, R30E MANY GATES FLD. CHAVES CO., N.M.			
					ENGR.							
					ENGR.							
1	D.C.	MOVE LINES & ADD VAL.	3-87		AFE CONTROL	SCALE	REV.	SIZE	DIV.	FIELD	LEASE	DWG
NO.	BY	REVISION	DATE	APP.		NONE	1	A	AC	3342	40383	