

(1-105 1963)

SUBMIT IN THE MANNER\*

(Other instructions on reverse side)

Form 400  
Budget Bureau No. 42 R1426

**UNITED STATES  
DEPARTMENT OF THE INTERIOR  
GEOLOGICAL SURVEY**

**APPLICATION FOR PERMIT TO DRILL, DEEPEN, OR PLUG BACK**

## 1a. TYPE OF WORK

DRILL ☒DEEPEN ☐PLUG BACK ☐

## b. TYPE OF WELL

OIL WELL ☒GAS WELL ☐OTHER ☐SINGLE ZONE ☐MULTIPLE ZONE ☐

## 2. NAME OF OPERATOR

JACK F. GRIMM

## 3. ADDRESS OF OPERATOR

P. O. BOX 35 ABILENE, TEXAS 79604

## 4. LOCATION OF WELL (Report location clearly and in accordance with any State requirements.)\*

At surface 990 from North line and 990 from East line of Section 28  
At proposed prod. zone Queen Sand

## 14. DISTANCE IN MILES AND DIRECTION FROM NEAREST TOWN OR POST OFFICE\*

25 miles east of Hagerman

10. DISTANCE FROM PROPOSED\* LOCATION TO NEAREST PROPERTY OR LEASE LINE, FT. (Also to nearest drlg. unit line, if any)  
990 from East line

16. NO. OF ACRES IN LEASE  
1120/80

17. NO. OF ACRES ASSIGNED TO THIS WELL  
40

18. DISTANCE FROM PROPOSED LOCATION\* TO NEAREST WELL, DRILLING, COMPLETED, OR APPLIED FOR, ON THIS LEASE, FT.  
1,380

19. PROPOSED DEPTH  
2,400'

20. ROTARY OR CABLE TOOLS  
Cable tools

## 21. ELEVATIONS (Show whether DF, RT, GR, etc.)

3,892.1 GR

## 23.

## PROPOSED CASING AND CEMENTING PROGRAM.

| SIZE OF HOLE | SIZE OF CASING | WEIGHT PER FOOT | SETTING DEPTH | QUANTITY OF CEMENT |
|--------------|----------------|-----------------|---------------|--------------------|
| 10 1/4       | 8 5/8          | 24#             | 300           | 300 Sx             |
| 8            | 4 1/2          | 9.5#            | 2,400         | 150 Sx             |

IN ABOVE SPACE DESCRIBE PROPOSED PROGRAM: If proposal is to deepen or plug back, give data on present productive zone and proposed new productive zone. If proposal is to drill or deepen directionally, give pertinent data on subsurface locations and measured and true vertical depths. Give blowout preventer program, if any.

## 24.

SIGNED

TITLE

Operator

DATE 10/4/ 1971

(This space for Federal or State office use)

PERMIT NO.

APPROVAL DATE

APPROVED BY

TITLE

CONDITIONS OF APPROVAL, IF ANY:

\*See Instructions On Reverse Side

**RECEIVED**

OCT - 6 1971

OIL CONSERVATION COMM.  
HOOVER N. H.

**NEW MEXICO OIL CONSERVATION COMMISSION  
WELL LOCATION AND ACREAGE DEDICATION PLAT**

Form C-102  
Supersedes C-128  
Effective 1-1-65

All distances must be from the outer boundaries of the Section.

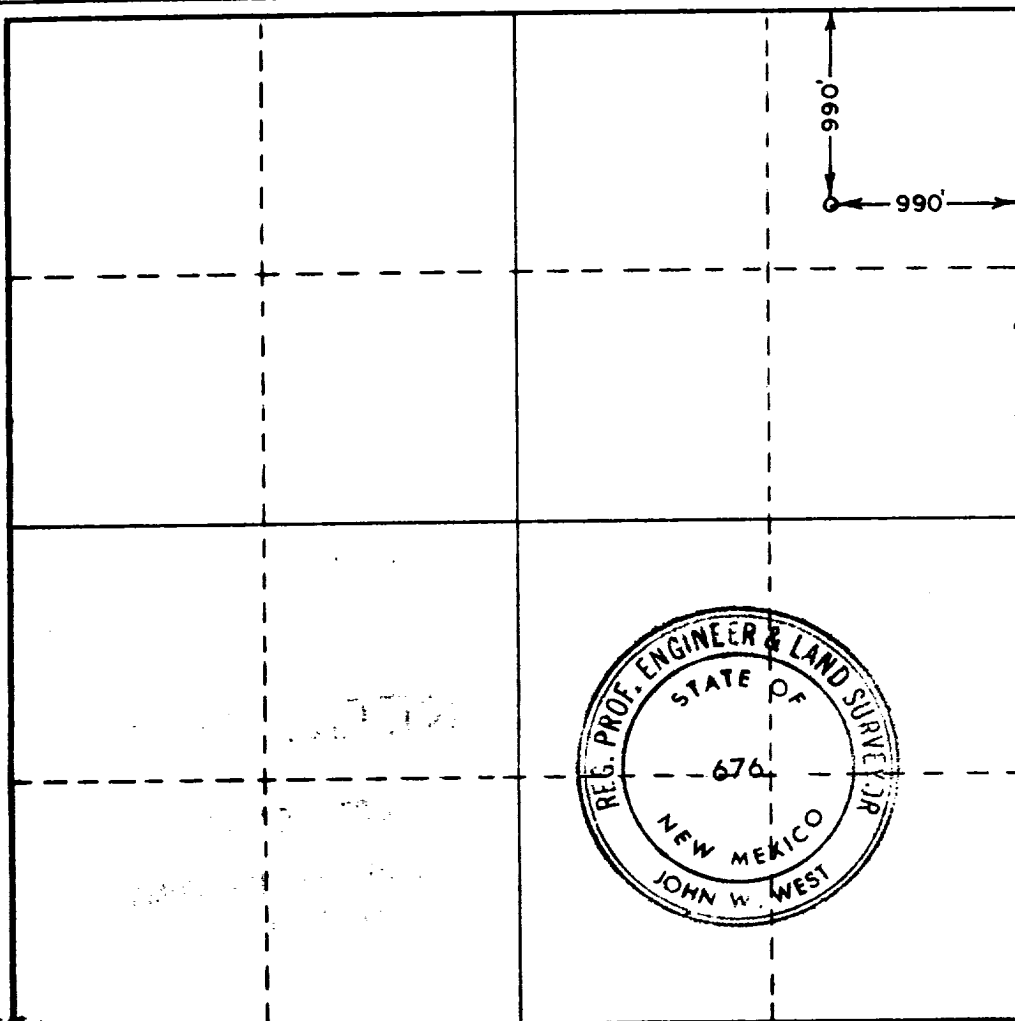
|                                                                                                                                                                                                              |                                          |                                 |                                       |                         |                      |
|--------------------------------------------------------------------------------------------------------------------------------------------------------------------------------------------------------------|------------------------------------------|---------------------------------|---------------------------------------|-------------------------|----------------------|
| Operator<br><b>JACK F. GRIMM</b>                                                                                                                                                                             |                                          |                                 | Lease<br><b>FEDERAL 28</b>            |                         | Well No.<br><b>4</b> |
| Unit Letter<br><b>A</b>                                                                                                                                                                                      | Section<br><b>28</b>                     | Township<br><b>14 SOUTH</b>     | Range<br><b>30 EAST</b>               | County<br><b>CHAVES</b> |                      |
| Actual Footage Location of Well:<br><div style="display: flex; justify-content: space-between;"> <span>990 feet from the <b>NORTH</b> line and</span> <span>990 feet from the <b>EAST</b> line</span> </div> |                                          |                                 |                                       |                         |                      |
| Ground Level Elev.<br><b>3892.1</b>                                                                                                                                                                          | Producing Formation<br><b>Queen Sand</b> | Pool<br><b>Vest Ranch Queen</b> | Dedicated Acreage:<br><b>40</b> Acres |                         |                      |

1. Outline the acreage dedicated to the subject well by colored pencil or hachure marks on the plat below.
2. If more than one lease is dedicated to the well, outline each and identify the ownership thereof (both as to working interest and royalty).
3. If more than one lease of different ownership is dedicated to the well, have the interests of all owners been consolidated by communitization, unitization, force-pooling, etc?

☐ Yes    ☐ No    If answer is "yes," type of consolidation \_\_\_\_\_

If answer is "no," list the owners and tract descriptions which have actually been consolidated. (Use reverse side of this form if necessary.) \_\_\_\_\_

No allowable will be assigned to the well until all interests have been consolidated (by communitization, unitization, forced-pooling, or otherwise) or until a non-standard unit, eliminating such interests, has been approved by the Commission.



**CERTIFICATION**

I hereby certify that the information contained herein is true and complete to the best of my knowledge and belief.

Name **JACK F. GRIMM**

Position **OPERATOR**

Company **JACK F. GRIMM**

Date **October 4, 1971**

I hereby certify that the well location shown on this plat was plotted from field notes of actual surveys made by me or under my supervision, and that the same is true and correct to the best of my knowledge and belief.

Date Surveyed **SEPTEMBER 28, 1971**

Registered Professional Engineer and/or Land Surveyor

*John W. West*  
Certificate No. **676**

**RECEIVED**

**OCT - 61971**

**OIL CONSERVATION COMM.  
HOBBS, N. M.**