

UNITED STATES
DEPARTMENT OF THE INTERIOR
GEOLOGICAL SURVEY

APPLICATION FOR PERMIT TO DRILL, DEEPEN, OR PLUG BACK

1a. TYPE OF WORK

DRILL ☒DEEPEN ☐PLUG BACK ☐

b. TYPE OF WELL

OIL
WELL ☒GAS
WELL ☐OTHER ☐SINGLE
ZONE ☒MULTIPLE
ZONE ☐

2. NAME OF OPERATOR

JACK L. MCCLELLAN

3. ADDRESS OF OPERATOR

P. O. Box 848, ROSWELL, NEW MEXICO 88201

4. LOCATION OF WELL (Report location clearly and in accordance with any State requirements.)*
At surface

At proposed prod. zone

1650' FWL & 2310' FSL

14. DISTANCE IN MILES AND DIRECTION FROM NEAREST TOWN OR POST OFFICE*

20 MILES NORTH OF LOCO HILLS, NEW MEXICO

15. DISTANCE FROM PROPOSED*

LOCATION TO NEAREST
PROPERTY OR LEASE LINE, FT.
(Also to nearest drlg. unit line, if any)

1650'

16. NO. OF ACRES IN LEASE

1408.25

18. DISTANCE FROM PROPOSED LOCATION*
TO NEAREST WELL, DRILLING, COMPLETED,
OR APPLIED FOR, ON THIS LEASE, FT.

1320'

19. PROPOSED DEPTH

2025

17. NO. OF ACRES ASSIGNED
TO THIS WELL

40

20. ROTARY OR CABLE TOOLS

CABLE TOOLS

21. ELEVATIONS (Show whether DF, RT, GR, etc.)

22. APPROX. DATE WORK WILL START*

12/31/71

23.

PROPOSED CASING AND CEMENTING PROGRAM

SIZE OF HOLE	SIZE OF CASING	WEIGHT PER FOOT	SETTING DEPTH	QUANTITY OF CEMENT
10 1/4	8 5/8"	24 #	350'	150sx.
	5 1/2"	15.5 #	2025'	150sx.

WILL DRILL TO APPROXIMATELY 2025' TO TEST THE QUEEN SAND. IF
PRODUCTION IS INDICATED, WILL RUN CASING AND COMPLETE.
CORTEZ DRILLING CO., BOX 848, ROSWELL, NEW MEXICO WILL BE THE
DRILLING CONTRACTOR.

RECEIVED
DEC 30 1971
U. S. GEOLOGICAL SURVEY
ALBUQUERQUE, NEW MEXICO

IN ABOVE SPACE DESCRIBE PROPOSED PROGRAM: If proposal is to deepen or plug back, give data on present productive zone and proposed new productive zone. If proposal is to drill or deepen directionally, give pertinent data on subsurface locations and measured and true vertical depths. Give blowout preventer program, if any.

24.

SIGNED

W. H. Gordon

TITLE

PRODUCTION SUPT.

DATE 12/29/71

(This space for Federal or State office use)

DEC 30 1971

PERMIT NO.

APPROVAL DATE

APPROVED BY

CONDITIONS OF APPROVAL, IF ANY:

John A. Ruff

TITLE

DISTRICT ENGINEER

DATE

DEC 30 1971

RECEIVED

JAN 3 1972

OIL CONSERVATION COMM.
HOBBS, N. M.

RECEIVED

JAN 3 1972

O. C. C.
ESIA, OFFICE

**NEW MEXICO OIL CONSERVATION COMMISSION
WELL LOCATION AND ACREAGE DEDICATION PLAN**

Form C-102
Supersedes C-128
Effective 1-1-65

All distances must be from the outer boundaries of the Section.

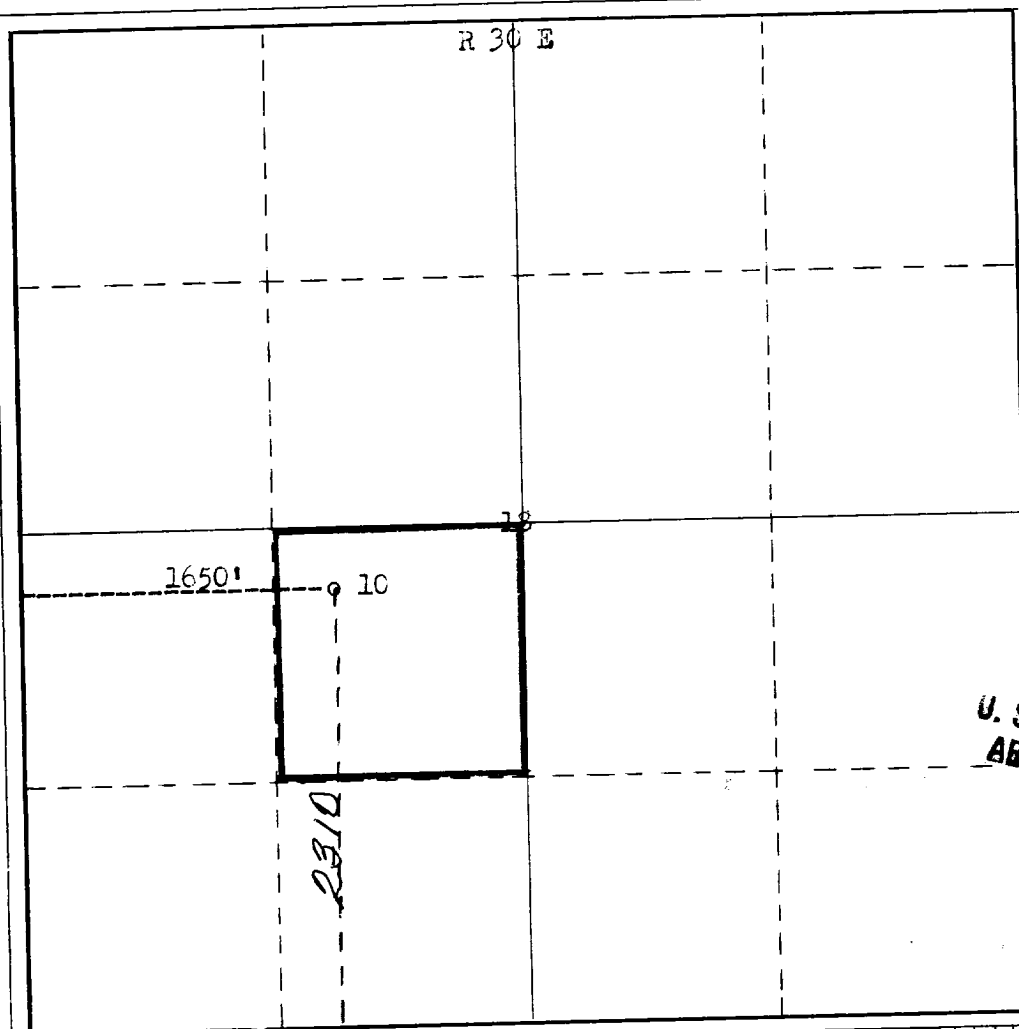
Operator JACK L. McCLELLAN			Lease LISA [REDACTED] "B" Fee		Well No. 10
Unit Letter K	Section 18	Township 15 South	Range 30 East	County Chaves	
Actual Footage Location of Well: 2310 feet from the South line and 1650 feet from the West line					
Ground Level Elev. 3940	Producing Formation Queen Sand	Pool	Dedicated Acreage: 40 Acres		

1. Outline the acreage dedicated to the subject well by colored pencil or hachure marks on the plat below.
2. If more than one lease is dedicated to the well, outline each and identify the ownership thereof (both as to working interest and royalty).
3. If more than one lease of different ownership is dedicated to the well, have the interests of all owners been consolidated by communitization, unitization, force-pooling, etc?

☐ Yes ☐ No If answer is "yes," type of consolidation _____

If answer is "no," list the owners and tract descriptions which have actually been consolidated. (Use reverse side of this form if necessary.) _____

No allowable will be assigned to the well until all interests have been consolidated (by communitization, unitization, forced-pooling, or otherwise) or until a non-standard unit, eliminating such interests, has been approved by the Commission.



CERTIFICATION

I hereby certify that the information contained herein is true and complete to the best of my knowledge and belief.

Name _____
Position _____
Company _____
Date **12-28-71**

I hereby certify that the well location shown on this plan was plotted in the field from actual surveys made by me or under my supervision, and that the same is true and correct to the best of my knowledge and belief.

**REGISTERED LAND SURVEYOR
NO. 542
DEC 28 1971
U.S. GEOLOGICAL SURVEY
ARTESIA, NEW MEXICO
JAMES H. BROWN**

Date Surveyed
December 28th, 1971
Registered Professional Engineer
and/or Land Surveyor

James H. Brown
Certificate No. **542**

RECEIVED

JAN 3 1972

OIL CONSERVATION COMM.
HOBBS, N. M.

RECEIVED

RECEIVED
ARLINGTON