

**NEW MEXICO OIL CONSERVATION COMMISSION
WELL LOCATION AND ACREAGE DEDICATION PLAT**

Form C-102
Supersedes C-128
Effective 1-1-65

All distances must be from the outer boundaries of the Section.

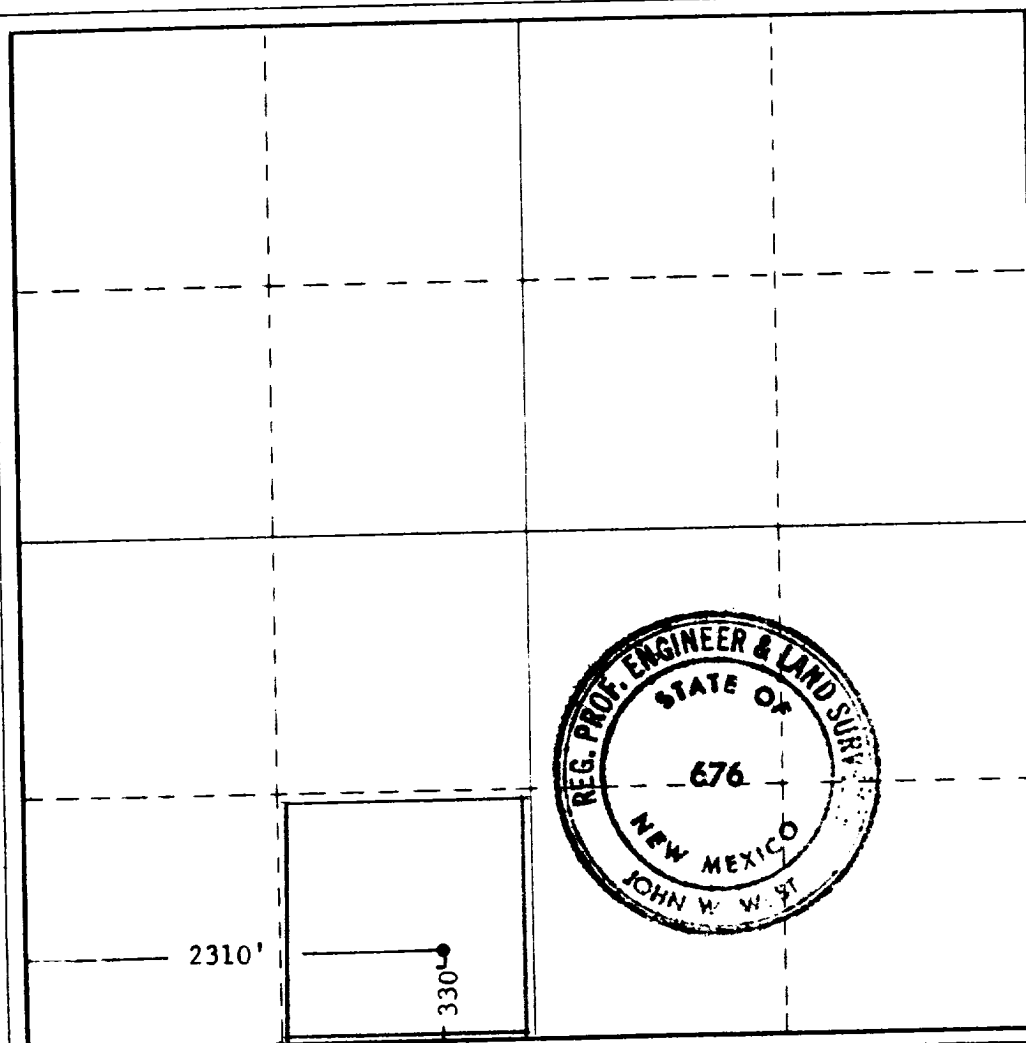
Operator CITIES SERVICE OIL COMPANY			Lease HOLBECK FEDERAL "A" <i>Lease</i>		Well No. 1
Unit Letter N	Section 21	Township 14 SOUTH	Range 30 EAST	County CHAVES	
Actual Footage Location of Well: 330 feet from the SOUTH line and 2310 feet from the WEST line					
Ground Level Elev. 3900 Est.	Producing Formation Queen		Pool Undesign. (Vest Ranch Q.)	Dedicated Acreage: 40	Acres

1. Outline the acreage dedicated to the subject well by colored pencil or hachure marks on the plat below.
2. If more than one lease is dedicated to the well, outline each and identify the ownership thereof (both as to working interest and royalty).
3. If more than one lease of different ownership is dedicated to the well, have the interests of all owners been consolidated by communitization, unitization, force-pooling, etc?

☐ Yes ☐ No If answer is "yes," type of consolidation _____

If answer is "no," list the owners and tract descriptions which have actually been consolidated. (Use reverse side of this form if necessary.) _____

No allowable will be assigned to the well until all interests have been consolidated (by communitization, unitization, forced-pooling, or otherwise) or until a non-standard unit, eliminating such interests, has been approved by the Commission.



CERTIFICATION

I hereby certify that the information contained herein is true and complete to the best of my knowledge and belief.

Name **JOHN W. WEST**
Position **Dist. Admin. Supervisor**
Company **Cities Service Oil Co.**
Date **March 7, 1972**

I hereby certify that the location shown on this plat was plotted from field notes of actual survey made by me or under my supervision, and that the same is true and correct to the best of my knowledge.

RECEIVED
MAR 8 1972
U.S. GEOLOGICAL SURVEY
ARTESIA, NEW MEXICO

Date Surveyed
MARCH 3, 1972
Registered Professional Engineer and/or Land Surveyor

John W. West
Certificate No. **676**

0 320 640 960 1280 1600 1920 2240 2560 2880 3200 3520 3840 4160 4480 4800 5120 5440 5760 6080 6400 6720 7040 7360 7680 8000

COUNTY	CHAVES	FIELD	Vest Ranch	STATE	NM 30-005-20399
OPR	CITIES SERVICE OIL CO.			MAP	
	1 Holbeck "A" Federal				
	Sec 21, T-14-S, R-30-E			CO-ORD	
	330' FSL, 2310' FWL of Sec				
	Spd 6-21-72		CLASS		EL
	Cmp 7-24-72	FORMATION	DATUM	FORMATION	DATUM
CSG & SX - TUBING					
8 5/8" at 440' w/175 sx					
LOGS EL GR RA IND HC A					
	TD 2175'				
PLUGGED & ABANDONED					

Distribution limited and publication prohibited by subscribers' agreement.
Reproduction rights reserved by Williams & Lee Scouting Service, Inc.

CONT.	Cortez	PROP DEPTH	2200'	TYPE	CT
DATE					

F.R. 3-13-72; Opr's Elev. 3900' GL
FD 2200' CT (Queen)
Contractor - Cortez
6-26-72 Drlg. 185' redbed
7-10-72 Drlg. 1540' anhy
7-17-72 TD 2055'; Fshg
7-24-72 TD 2175' anhy; Prep P&A
Show gas @ 2094' est 750 MCFGPD & decreasing
7-31-72 TD 2175'; PLUGGED & ABANDONED
LOG TOPS: Base Salt 1220', Queen 2094'
8-5-72 COMPLETION REPORTED