

UNITED STATES
DEPARTMENT OF THE INTERIOR

AMENDED

GEOLOGICAL SURVEY

APPLICATION FOR PERMIT TO DRILL, DEEPEN, OR PLUG BACK

1a. TYPE OF WORK

DRILL ☒DEEPEN ☐PLUG BACK ☐

b. TYPE OF WELL

OIL
WELL ☒GAS
WELL ☐

OTHER

SINGLE
ZONE ☒MULTIPLE
ZONE ☐

2. NAME OF OPERATOR

JACK L. McCLELLAN

3. ADDRESS OF OPERATOR

P. O. Box 848 - ROSWELL, NEW MEXICO 88201

4. LOCATION OF WELL (Report location clearly and in accordance with any State requirements.)

At surface

660 FSL & 660 FWL

At proposed prod. zone

14. DISTANCE IN MILES AND DIRECTION FROM NEAREST TOWN OR POST OFFICE*

35 MILES EAST OF ROSWELL, NEW MEXICO

15. DISTANCE FROM PROPOSED*

LOCATION TO NEAREST
PROPERTY OR LEASE LINE, FT.
(Also to nearest drlg. unit line, if any)

660'

18. DISTANCE FROM PROPOSED LOCATION*
TO NEAREST WELL, DRILLING, COMPLETED,
OR APPLIED FOR, ON THIS LEASE, FT.

5 MILES

16. NO. OF ACRES IN LEASE

640

19. PROPOSED DEPTH

3800'

17. NO. OF ACRES ASSIGNED
TO THIS WELL

40

20. ROTARY OR CABLE TOOLS

CABLE TOOL & ROTARY

21. ELEVATIONS (Show whether DF, RT, GR, etc.)

4067.2GR

22. APPROX. DATE WORK WILL START*

23.

PROPOSED CASING AND CEMENTING PROGRAM

SIZE OF HOLE	SIZE OF CASING	WEIGHT PER FOOT	SETTING DEPTH	QUANTITY OF CEMENT
11"	8 5/8"	24#	300'	150 sx
7 7/8"	5 1/2"	15 1/2#	3800'	100 sx

PROPOSE TO DRILL TO APPROXIMATELY 3800' TO TEST THE SLAUGHTER ZONE OF THE SAN ANDRES.

PROPOSE TO USE CABLE TOOLS OR WATER WELL SPUDDER TO SET SURFACE CASING AND THEN MOVE IN ROTARY. WILL DRILL WITH SALT WATER FROM SURFACE TO TOP OF PAY AND THEN USE LOW SOLIDS, LOW WATER LOSS SALT GEL MUD. WILL USE DOUBLE BLOWOUT PREVENTERS WITH PIPE AND BLIND RAMS.

IF PRODUCTION IS INDICATED WILL RUN PIPE AND ATTEMPT COMPLETION.

NOTE: PLATS WERE SUBMITTED WITH FIRST APPLICATION SUBMITTED MAY 4, 1972.

IN ABOVE SPACE DESCRIBE PROPOSED PROGRAM: If proposal is to deepen or plug back, give data on present productive zone and proposed new productive zone. If proposal is to drill or deepen directionally, give pertinent data on subsurface locations and measured and true vertical depths. Give blowout preventer program, if any.

24.

SIGNED

W. L. Beekman

TITLE

PRODUCTION
SUPERINTENDENT

DATE

MAY 8, 1972

(This space for Federal or State office use)

PERMIT NO.

APPROVAL DATE

DATE

APPROVED
MAY - 9 1972R. L. BEEKMAN
ACTING DISTRICT ENGINEERTHIS APPROVAL IS RESCINDED
IF OPERATIONS
ARE NOT COMMENCED WITHIN 3 MONTHS.
EXPIRES
AUG - 9 1972

*See Instructions On Reverse Side

RECEIVED

RECEIVED MAY 26 1972

MAY 31 1972

OIL CONSERVATION COMM.
HOBBS, N. M.

**NEW MEXICO OIL CONSERVATION COMMISSION
WELL LOCATION AND ACREAGE DEDICATION PLAT**

Form C-102
Supersedes C-128
Effective 1-1-65

All distances must be from the outer boundaries of the Section.

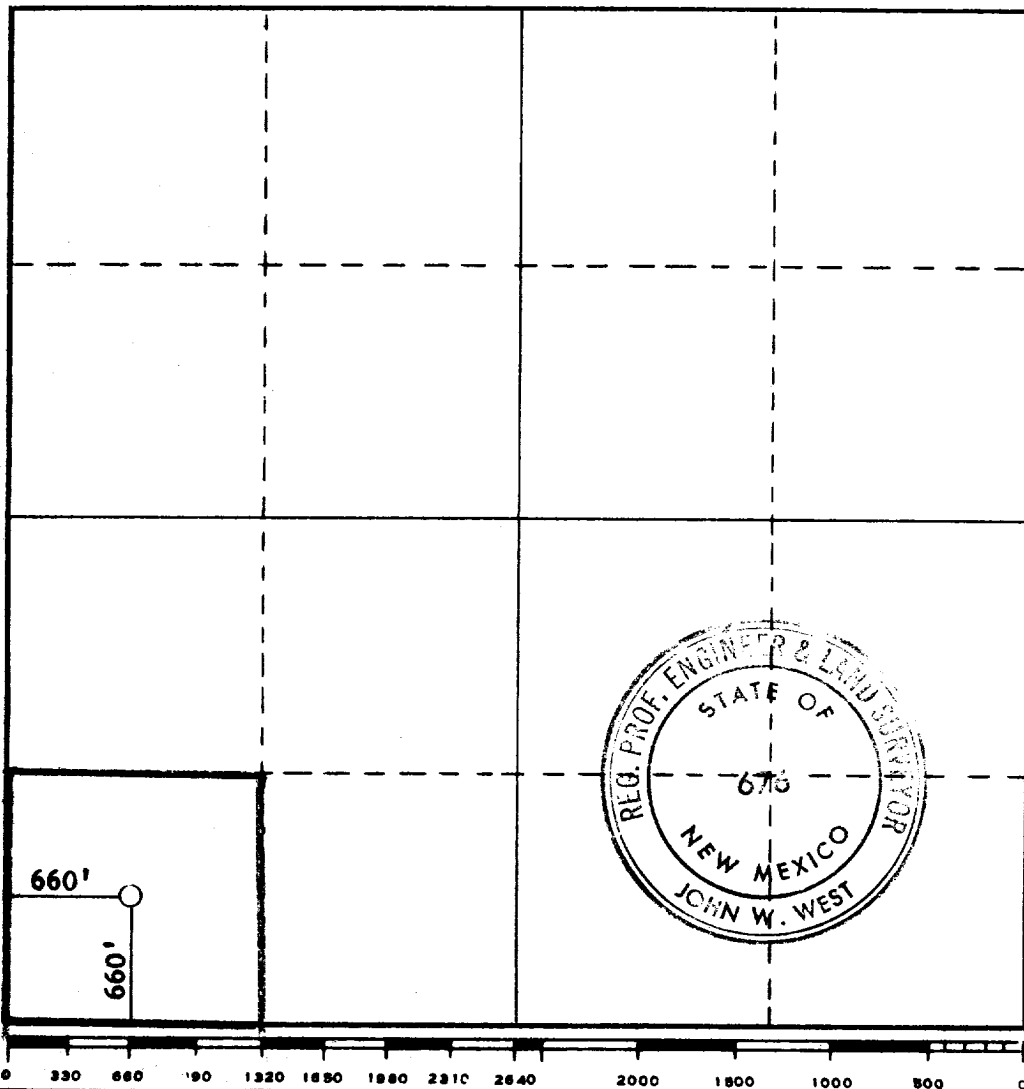
Operator JACK L. McCLELLAN			Lease TOLPAT Section 1 "A" Federal		Well No. 1
Unit Letter M	Section 22	Township 10 SOUTH	Range 30 EAST	County CHAVES	
Actual Footage Location of Well: 660 feet from the SOUTH line and 660 feet from the WEST line					
Ground Level Elev. 4067.2	Producing Formation SAN ANDRES		Pool WILDCAT		Dedicated Acreage: 40 Acres

1. Outline the acreage dedicated to the subject well by colored pencil or hachure marks on the plat below.
2. If more than one lease is dedicated to the well, outline each and identify the ownership thereof (both as to working interest and royalty).
3. If more than one lease of different ownership is dedicated to the well, have the interests of all owners been consolidated by communitization, unitization, force-pooling, etc?

☐ Yes ☐ No If answer is "yes," type of consolidation _____

If answer is "no," list the owners and tract descriptions which have actually been consolidated. (Use reverse side of this form if necessary.) _____

No allowable will be assigned to the well until all interests have been consolidated (by communitization, unitization, forced-pooling, or otherwise) or until a non-standard unit, eliminating such interests, has been approved by the Commission.



CERTIFICATION

I hereby certify that the information contained herein is true and complete to the best of my knowledge and belief.

Name **Jack L. McClellan**

Position
OWNER

Company
JACK L. McCLELLAN

Date
MAY 4, 1972

RECEIVED
MAY 8 1972
STATE GEOLOGICAL SURVEY
ARTESIA, NEW MEXICO

I hereby certify that the well location shown on this plat was plotted from field notes of actual surveys made by me or under my supervision, and that the same is true and correct to the best of my knowledge and belief.

Date Surveyed
APRIL 29, 1972

Registered Professional Engineer and/or Land Surveyor

John W. West
Certificate No. **676**

RECEIVED

RECEIVED MAY 26 1972

MAY 26 1972

OIL CONSERVATION COMM.
HOBBS, N. M.