

UNITED STATES  
DEPARTMENT OF THE INTERIOR  
GEOLOGICAL SURVEY

AMENDED

## APPLICATION FOR PERMIT TO DRILL, DEEPEN, OR PLUG BACK

## 1a. TYPE OF WORK

DRILL ☒DEEPEN ☐PLUG BACK ☐

## b. TYPE OF WELL

OIL  
WELL ☒GAS  
WELL ☐

OTHER

SINGLE  
ZONE ☒MULTIPLE  
ZONE ☐

## 2. NAME OF OPERATOR

JACK L. MCCLELLAN

## 3. ADDRESS OF OPERATOR

P. O. Box 848 - ROSWELL, NEW MEXICO 88201

## 4. LOCATION OF WELL (Report location clearly and in accordance with any State requirements.\*)

At surface

660 FNL &amp; 660 FWL

At proposed prod. zone

## 14. DISTANCE IN MILES AND DIRECTION FROM NEAREST TOWN OR POST OFFICE\*

35 MILES EAST OF ROSWELL, NEW MEXICO

## 15. DISTANCE FROM PROPOSED\*

LOCATION TO NEAREST  
PROPERTY OR LEASE LINE, FT.  
(Also to nearest drlg. unit line, if any)

660'

## 16. NO. OF ACRES IN LEASE

1280

## 17. NO. OF ACRES ASSIGNED

40

## 18. DISTANCE FROM PROPOSED LOCATION\*

TO NEAREST WELL, DRILLING, COMPLETED,  
OR APPLIED FOR, ON THIS LEASE, FT.

5 MILES

## 19. PROPOSED DEPTH

3800'

## 20. ROTARY OR CABLE TOOLS

ROTARY

## 21. ELEVATIONS (Show whether DF, RT, GR, etc.)

4058.7 GR

## 22. APPROX. DATE WORK WILL START\*

## 23. PROPOSED CASING AND CEMENTING PROGRAM

SIZE OF HOLE	SIZE OF CASING	WEIGHT PER FOOT	SETTING DEPTH	QUANTITY OF CEMENT
11"	8 5/8"	20#	300'	150 sx
7 7/8"	5 1/2"	15 1/2#	3800'	100 sx

PROPOSE TO DRILL TO APPROXIMATELY 3800' TO TEST THE SLAUGHTER ZONE OF THE SAN ANDRES.

WILL DRILL WITH FRESH WATER PRIOR TO SETTING SURFACE CASING. WILL DRILL WITH SALT WATER TO TOP OF PAY, THEN USE LOW SOLIDS, LOW WATER LOSS SALT GEL MUD. WILL USE DOUBLE BLOWOUT PREVENTER WITH PIPE AND BLIND RAMS BELOW SURFACE PIPE.

IF PRODUCTION IS INDICATED WILL RUN PIPE AND ATTEMPT COMPLETION.

NOTE: PLATS WERE SUBMITTED WITH FIRST APPLICATION SUBMITTED MAY 4, 1972.

IN ABOVE SPACE DESCRIBE PROPOSED PROGRAM: If proposal is to deepen or plug back, give data on present productive zone and proposed new productive zone. If proposal is to drill or deepen directionally, give pertinent data on subsurface locations and measured and true vertical depths. Give blowout preventer program, if any.

24. SIGNED *W. L. Gordon* TITLE PRODUCTION SUPERINTENDENT

DATE MAY 8, 1972

(This space for Federal or State office use)

PERMIT NO. \_\_\_\_\_ APPROVAL DATE \_\_\_\_\_

APPROVED  
CONDITIONS OF APPROVAL, IF ANY:

DATE \_\_\_\_\_

APPROVED  
MAY - 9 1972  
R. C. BEEKMAN  
ACTING DISTRICT ENGINEERTHIS APPROVAL IS RESCINDED IF OPERATIONS  
ARE NOT COMMENCED WITHIN 3 MONTHS.  
AUG - 9 1972  
\*See Instructions On Reverse Side

RECEIVED

MAY 5 1972

OIL CONSERVATION COMM.  
HOBBS, N. M.

NEW MEXICO OIL CONSERVATION COMMISSION  
WELL LOCATION AND ACREAGE DEDICATION PLAT

Form C-102  
Supersedes C-128  
Effective 1-4-65

All distances must be from the outer boundaries of the Section.

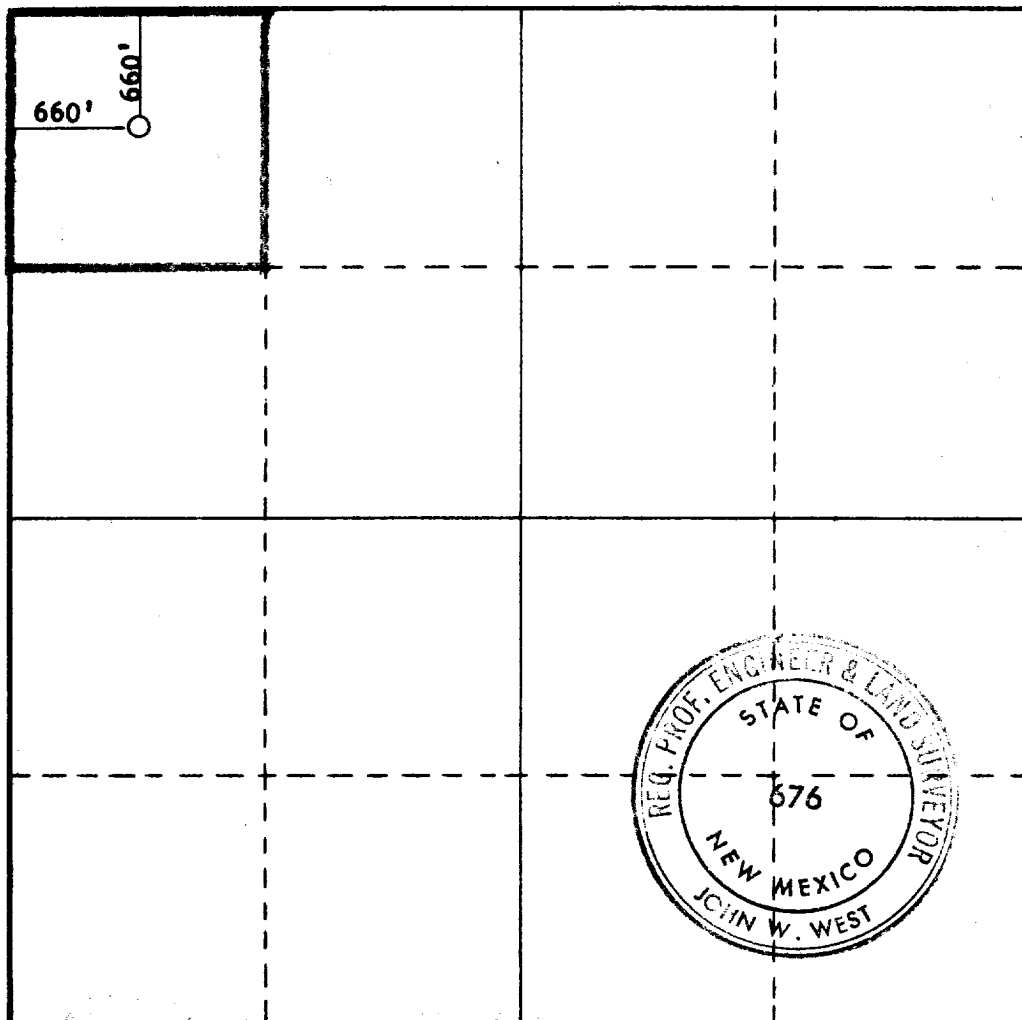
Operator <b>JACK L. McCLELLAN</b>		Lease <b>TOLPAT <del>Federal</del> "B" Federal</b>		Well No. <b>1</b>
Unit Letter <b>D</b>	Section <b>28</b>	Township <b>10 SOUTH</b>	Range <b>30 EAST</b>	County <b>CHAVES</b>
Actual Footage Location of Well:				
<b>660</b> feet from the <b>NORTH</b> line and		<b>660</b> feet from the <b>WEST</b> line		
Ground Level Elev. <b>4058.7'</b>	Producing Formation <b>SAN ANDRES</b>	Pool <b>WILDCAT</b>	Dedicated Acreage <b>40</b> Acres	

1. Outline the acreage dedicated to the subject well by colored pencil or hachure marks on the plat below.
2. If more than one lease is dedicated to the well, outline each and identify the ownership thereof (both as to working interest and royalty).
3. If more than one lease of different ownership is dedicated to the well, have the interests of all owners been consolidated by communitization, unitization, force-pooling, etc?

☐ Yes ☐ No If answer is "yes," type of consolidation \_\_\_\_\_

If answer is "no," list the owners and tract descriptions which have actually been consolidated. (Use reverse side of this form if necessary.) \_\_\_\_\_

No allowable will be assigned to the well until all interests have been consolidated (by communitization, unitization, forced-pooling, or otherwise) or until a non-standard unit, eliminating such interests, has been approved by the Commission.



CERTIFICATION

I hereby certify that the information contained herein is true and complete to the best of my knowledge and belief.

Name  
*Jack L. McClellan*  
Position  
**OWNER**  
Company  
**JACK L. McCLELLAN**

Date  
**MAY 4, 1972**

**RECEIVED**  
I hereby certify that the well location shown on this plat was made from field notes of actual surveys made by me or under my supervision, and that the same is correct to the best of my knowledge and belief.  
**U.S. GEOLOGICAL SURVEY**  
**ARTISTIA NEW MEXICO**

Date Surveyed  
**APRIL 29, 1972**

Registered Professional Engineer and/or Land Surveyor

*John W. West*  
Certificate No.

**676**

0 330 660 990 1320 1650 1980 2310 2640 2970 3300 3630 3960 4290 4620 4950 5280 5610 5940 6270 6600

RECEIVED  
RECEIVED

MAY 8 1972  
OIL CONSERVATION COMM.  
HOBBS, N. M.  
MAY 26 1972  
ART 17 10 11