

UNITED STATES
DEPARTMENT OF THE INTERIOR
GEOLOGICAL SURVEY

30-005-20422

5. LEASE DESIGNATION AND SERIAL NO.
NM-054926-A

6. IF INDIAN, ALLOTTEE OR TRIBE NAME
-

7. UNIT AGREEMENT NAME
-

8. FARM OR LEASE NAME
Jackson

9. WELL NO.
1

10. FIELD AND POOL, OR WILDCAT
Wildcat

11. SEC., T., R., M., OR BLK.
AND SURVEY OR AREA
25, T-12S, R-30E

12. COUNTY OR PARISH
Chaves

13. STATE
N.M.

17. NO. OF ACRES ASSIGNED
TO THIS WELL
40

20. ROTARY OR CABLE TOOLS
Rotary

22. APPROX. DATE WORK WILL START*
December 20, 1972

APPLICATION FOR PERMIT TO DRILL, DEEPEN, OR PLUG BACK

1a. TYPE OF WORK
DRILL ☒ DEEPEN ☐ PLUG BACK ☐

b. TYPE OF WELL
OIL WELL ☐ GAS WELL ☐ OTHER ☐ SINGLE ZONE ☒ MULTIPLE ZONE ☐

2. NAME OF OPERATOR
Read & Stevens, Inc.

3. ADDRESS OF OPERATOR
P. O. Box 2126, Roswell, New Mexico 88201

4. LOCATION OF WELL (Report location clearly and in accordance with any State requirements.)*
At surface
1980' FSL and 660' FEL
At proposed prod. zone **same**

14. DISTANCE IN MILES AND DIRECTION FROM NEAREST TOWN OR POST OFFICE*
13 miles South-Southwest of Caprock, New Mexico

16. NO. OF ACRES IN LEASE
1280

18. DISTANCE FROM PROPOSED LOCATION*
TO NEAREST WELL, DRILLING, COMPLETED,
OR APPLIED FOR, ON THIS LEASE, FT.
-

21. ELEVATIONS (Show whether DF, RT, GR, etc.)

23. PROPOSED CASING AND CEMENTING PROGRAM

SIZE OF HOLE	SIZE OF CASING	WEIGHT PER FOOT	SETTING DEPTH	QUANTITY OF CEMENT
17 1/2"	12 3/4"	34#	350	150 sx.
7 7/8"	4 1/2"	9.5#	2700	200 sx.

IN ABOVE SPACE DESCRIBE PROPOSED PROGRAM: If proposal is to deepen or plug back, give data on present productive zone and proposed new productive zone. If proposal is to drill or deepen directionally, give pertinent data on subsurface locations and measured and true vertical depths. Give blowout preventer program, if any.

24. **Carl Schilling** **Agent** **December 6, 1972**

(This space for Federal or State office use)

PERMIT NO. **DEC 26 1972**

APPROVED BY **James C. Kraft** **DISTRICT ENGINEER** **DEC 26 1972**

CONDITIONS OF APPROVAL, IF ANY:
THIS APPROVAL IS RESCINDED IF OPERATIONS ARE NOT COMMENCED WITHIN 3 MONTHS.
EXPIRES 3-26-73
***See Instructions On Reverse Side**

RECEIVED
DEC-7-1972
U. S. GEOLOGICAL SURVEY
ARTESIA, NEW MEXICO

Instructions

General: This form is designed for submitting proposals to perform certain well operations, as indicated, on all types of lands and leases for appropriate action by either a Federal or a State agency, or both, pursuant to applicable Federal and/or State laws and regulations. Any necessary special instructions concerning the use of this form and the number of copies to be submitted, particularly with regard to local, area, or regional procedures and practices, either are shown below or will be issued by, or may be obtained from, the local Federal and/or State office.

Item 1: If the proposal is to redrill to the same reservoir at a different subsurface location or to a new reservoir, use this form with appropriate notations. Consult applicable State or Federal regulations concerning subsequent work proposals or reports on the well.

Item 4: If there are no applicable State requirements, locations on Federal or Indian land should be described in accordance with Federal requirements. Consult local State or Federal office for specific instructions.

Item 14: Needed only when location of well cannot readily be found by road from the land or lease description. A plat, or plats, separate or on this reverse side, showing the roads to, and the surveyed location of, the well, and any other required information, should be furnished when required by Federal or State agency offices.

Items 15 and 18: If well is to be, or has been directionally drilled, give distances for subsurface location of hole in any present or objective production zone.

Item 22: Consult applicable Federal or State regulations, or appropriate officials, concerning approval of the proposal before operations are started.

RECEIVED

JAN 24 1963

OIL CONSERVATION DIVISION
HOOVER, N. M.

NEW MEXICO OIL CONSERVATION COMMISSION
WELL LOCATION AND ACREAGE DEDICATION PLAT

Form C-102
Supersedes C-128
Effective 1-1-65

All distances must be from the outer boundaries of the Section.

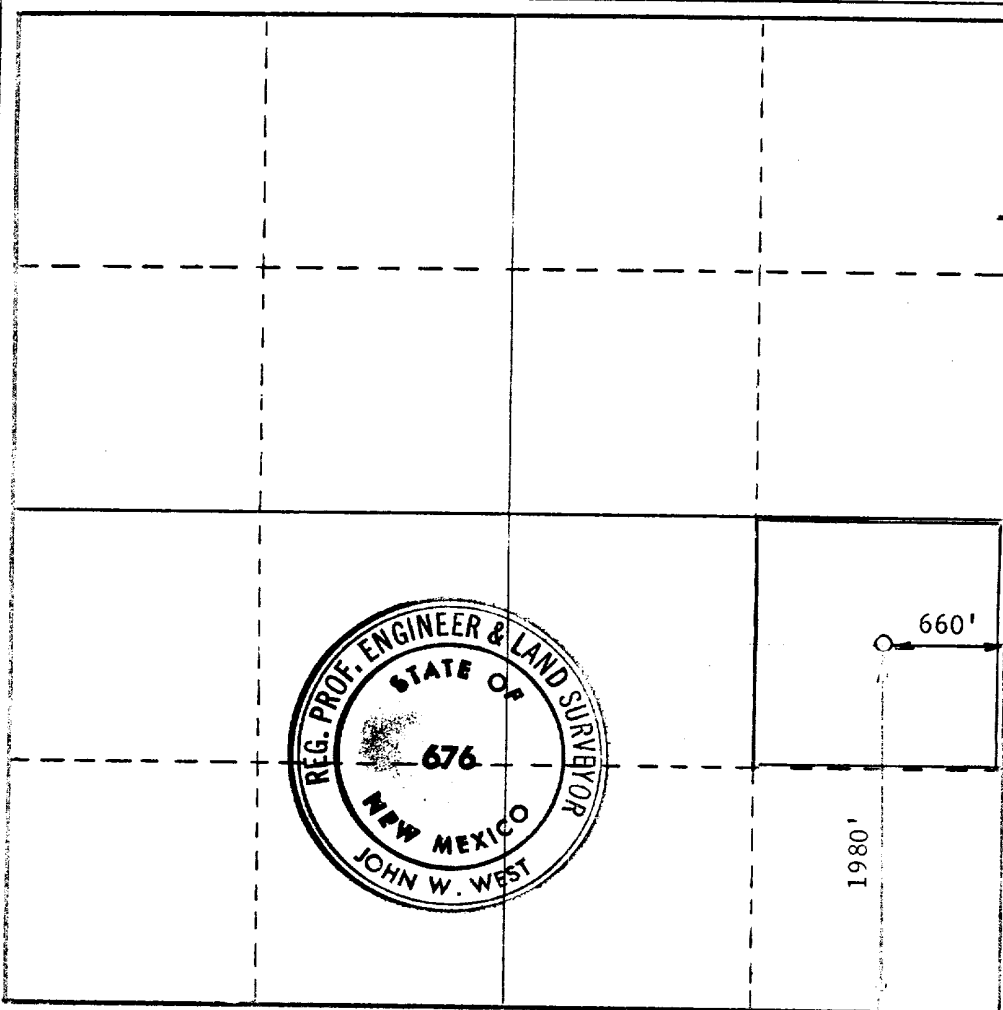
Operator READ & STEVENS, INC.			Lease JACKSON		Well No. 1
Unit Letter I	Section 25	Township 12 SOUTH	Range 30 EAST	County CHAVES	
Actual Footage Location of Well: 1980 feet from the SOUTH line and 660 feet from the EAST line					
Ground Level Elev.	Producing Formation Queen		Pool WILDCAT	Dedicated Acreage: 40 Acres	

1. Outline the acreage dedicated to the subject well by colored pencil or hachure marks on the plat below.
2. If more than one lease is dedicated to the well, outline each and identify the ownership thereof (both as to working interest and royalty).
3. If more than one lease of different ownership is dedicated to the well, have the interests of all owners been consolidated by communitization, unitization, force-pooling, etc?

☐ Yes ☐ No If answer is "yes," type of consolidation _____

If answer is "no," list the owners and tract descriptions which have actually been consolidated. (Use reverse side of this form if necessary.) _____

No allowable will be assigned to the well until all interests have been consolidated (by communitization, unitization, forced-pooling, or otherwise) or until a non-standard unit, eliminating such interests, has been approved by the Commission.



CERTIFICATION

I hereby certify that the information contained herein is true and complete to the best of my knowledge and belief.

Carl A. Schellinger
Name

Carl A. Schellinger

Position

Agent

Company

Read & Stevens, Inc.

Date

December 6, 1972

I hereby certify that the well location shown on this plat was plotted from field notes of actual surveys made by me or under my supervision, and that the same is true and correct to the best of my knowledge and belief.

Date Surveyed

NOVEMBER 25, 1972

Registered Professional Engineer and/or Land Surveyor

John W. West
Certificate No. **676**

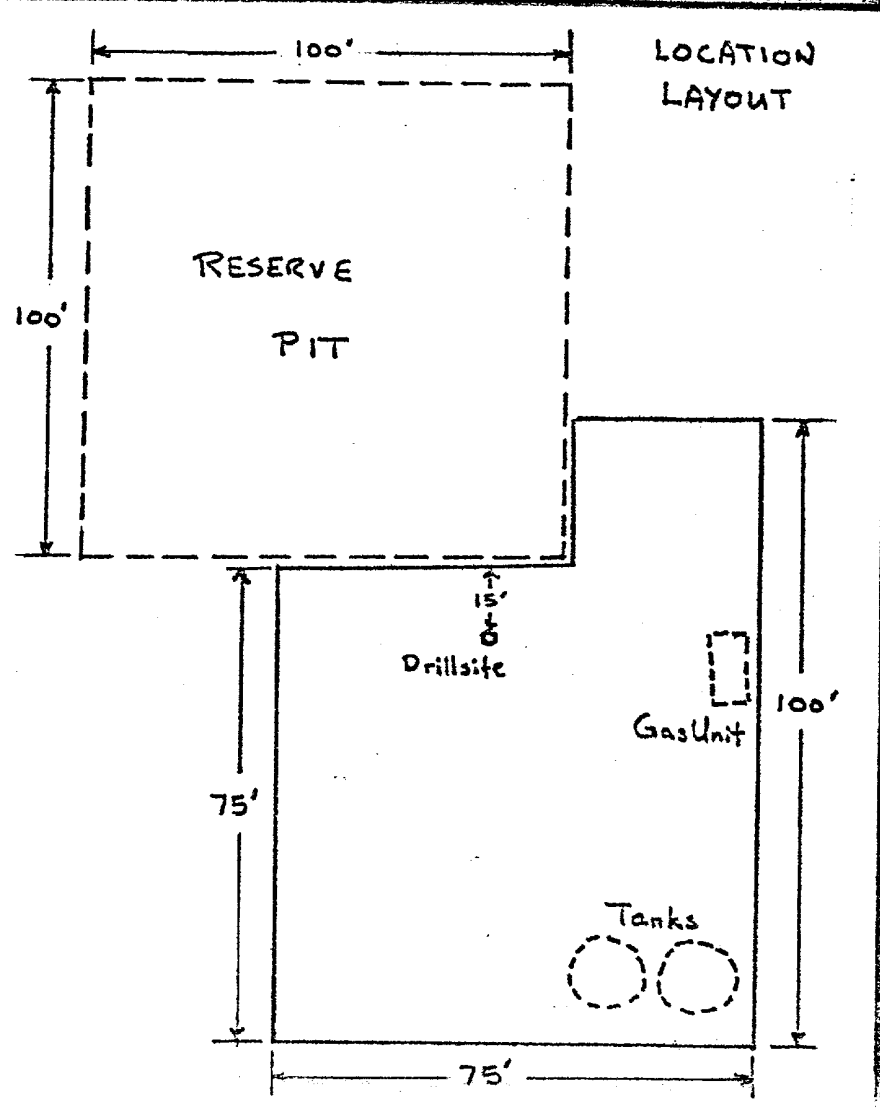
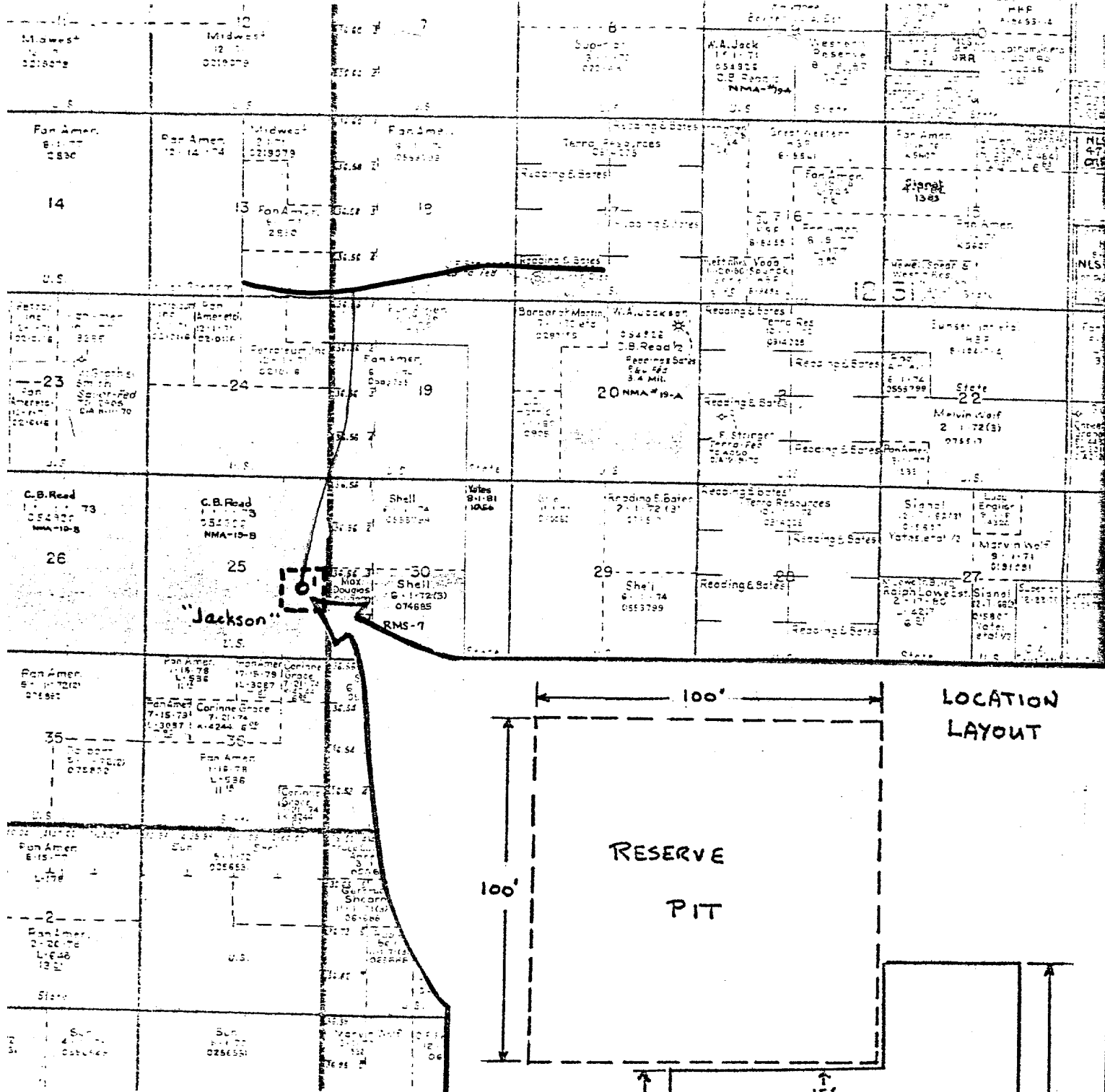
CHECK LIST - PERSUANT TO U.S. GEOLOGICAL
SURVEY INSTRUCTIONS OF APRIL 1, 1972 FOR
SUBMITTAL WITH APPLICATIONS TO DRILL




1. Existing roads. See plat
2. Planned access roads. See plat
3. Location of wells. See plat
4. Lateral roads to wells locations. See plat
5. Location of tank batteries and flowlines. Wellsite
6. Locations and types of water supply. Trucked from Great Western Water Station 8 mi. S.E.
7. Methods for handling waste disposal. None - gas well
8. Location of camps. None
9. Location of airstrips. None
10. Location layout. Noted on plat
11. Plans for restoration of the surface. In accordance with usual practice
12. Other information. None
13. Mud Program. Black water mud - Vis 32-34 wt-FW no filtrate
14. Blowout preventer system. 10", 900 Series, 3000# Test, SS Cameron Double Hydraulic Blowout Preventer.

RECEIVED

JAN 21 1978

U.S. CONSERVATION COMMISSION
HONOLULU, H. I.



-  Proration Unit
-  Existing Roads
-  New Road