

IP (Queen) Perfs 2426-62' CAOF 1170 MCFGPD. GOR dry; Grav
(gas) .894; SIWHP 892#

CONTR	Cactus	OPRS ELEV	4027' DF	PD	2700'	TYPE	RT
-------	--------	-----------	----------	----	-------	------	----

FR 1-1-73
(Queen)
12-29-72 Drlg 2220' anhy
1-8-73 TD 2510'; Prep Perf
DST 2421-60', open 45 mins, GTS in 1 min @
1000 MCFGPD thru 1/2" chk, SFP 165#, inc
to 2200 MCFGPD thru 1/2" chk, SFP 365#, rec 250'
DM, 30 min ISIP 980#, FP 350-560#, 30 min FSIP
980#, HP 1340-1272#
1-15-73 TD 2510'; Prep Perf
1-22-73 TD 2510'; Tstg
Perf 2426-34', 2440-46', 2454-62' w/2 SPF
Flwd est 250 MCFGPD (2426-62')
Acid (2426-62') 500 gals
Flwd 1800 MCFGPD thru 1/2" chk, TP 270#
1-29-73 TD 2510'; SI

CHAVES
READ & STEVENS, INC.

Wildcat
1 Jackson

NM Sec 25, T12S, R30E
Page #2

2-5-73

TD 2510'; WO OCC Pot
CAOF 1170 MCFGPD, SIWHP 892#
TD 2510'; COMPLETE

2-26-73

(Queen) FOUR POINT GAUGES:

Flwd 284 MCFGPD, 9/64" chk, 55 mins, TP 824#
Flwd 401 MCFGPD, 11/64" chk, 35 mins, TP 762#
Flwd 527 MCFGPD, 13/64" chk, 30 mins, TP 702#
Flwd 648 MCFGPD, 15/64" chk, 25 mins, TP 640#
Queen Gas assigned to SE Chaves Queen Gas
Area

3-3-73

LOG TOPS: Rustler 900', Yates 1675', Queen
2368'

COMPLETION REPORTED

**NEW MEXICO OIL CONSERVATION COMMISSION
WELL LOCATION AND ACREAGE DEDICATION PLAT**

Fbr. C-102
Supersedes C-128
Effective 1-1-65

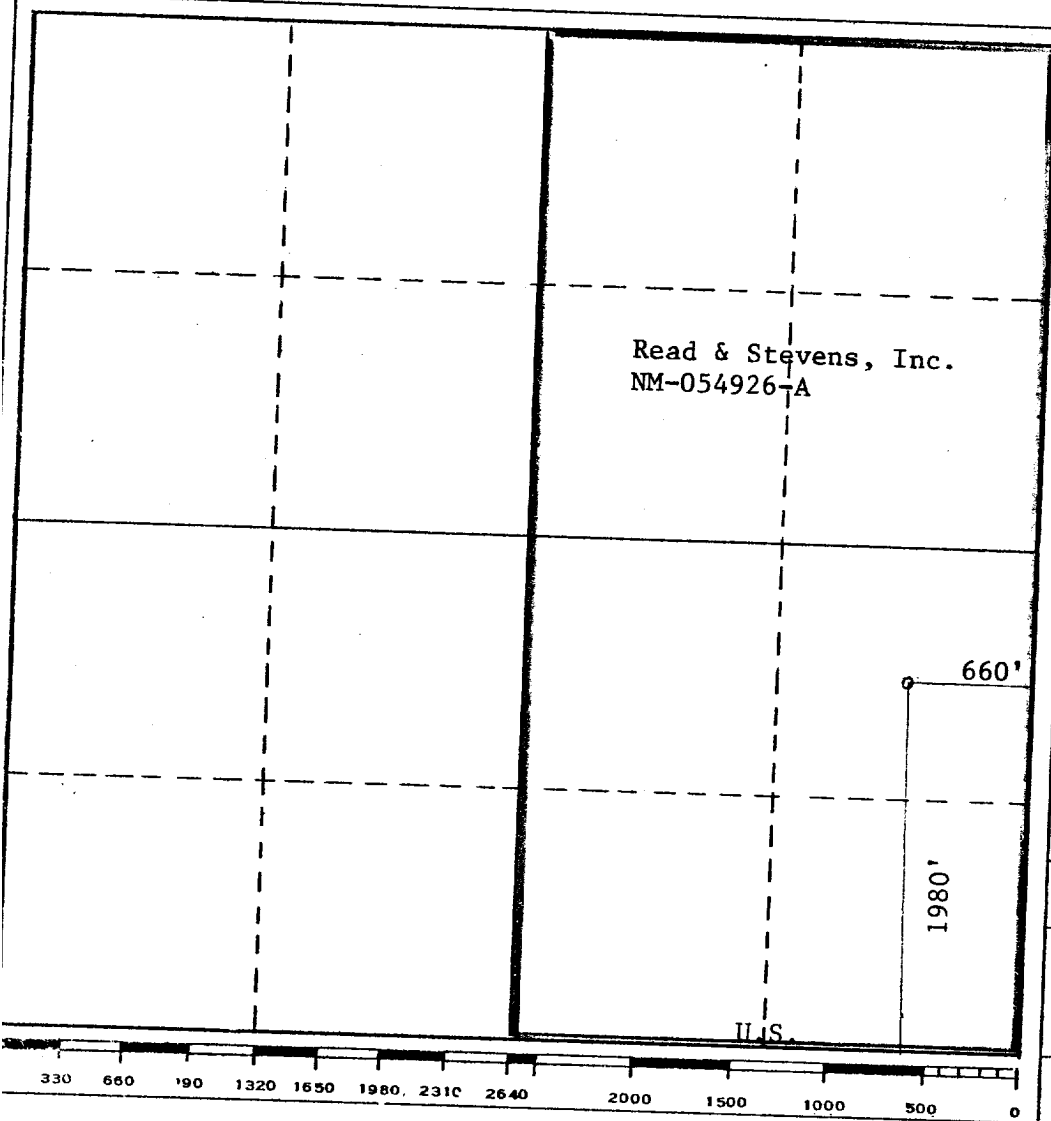
All distances must be from the outer boundaries of the Section.

Operator Read & Stevens, Inc.			Lease Jackson		Well No. 1
Unit Letter I	Section 25	Township 12-South	Range 30-East	County Chaves	
Actual Footage Location of Well: 1980 feet from the South line and 660 feet from the East line					
Ground Level Elev. 4018'	Producing Formation Queen Sand		Pool Southeast Chaves Queen Gas		Dedicated Acreage: 320.00 Acres

1. Outline the acreage dedicated to the subject well by colored pencil or hachure marks on the plat below.
2. If more than one lease is dedicated to the well, outline each and identify the ownership thereof (both as to working interest and royalty).
3. If more than one lease of different ownership is dedicated to the well, have the interests of all owners been consolidated by communitization, unitization, force-pooling, etc?
☐ Yes ☐ No If answer is "yes," type of consolidation _____

If answer is "no," list the owners and tract descriptions which have actually been consolidated. (Use reverse side of this form if necessary.) _____

No allowable will be assigned to the well until all interests have been consolidated (by communitization, unitization, forced-pooling, or otherwise) or until a non-standard unit, eliminating such interests, has been approved by the Commission.



CERTIFICATION	
I hereby certify that the information contained herein is true and complete to the best of my knowledge and belief.	
Name <i>John W. West</i>	Position Agent
Company Read & Stevens, Inc.	
Date September 27, 1977	
I hereby certify that the well location shown on this plat was plotted from field notes of actual surveys made by me or under my supervision, and that the same is true and correct to the best of my knowledge and belief.	
Date Surveyed November 25, 1972	
Registered Professional Engineer and/or Land Surveyor Original signed by John W. West	
Certificate No.	676

RECEIVED

SEP 21 1977

OIL CONSERVATION COMM.
HOBBS, N. M.