

NEW MEXICO OIL CONSERVATION COMMISSION
WELL LOCATION AND ACREAGE DEDICATION PLAT

Form C-102
Supersedes C-128
Effective 1-1-65

All distances must be from the outer boundaries of the Section.

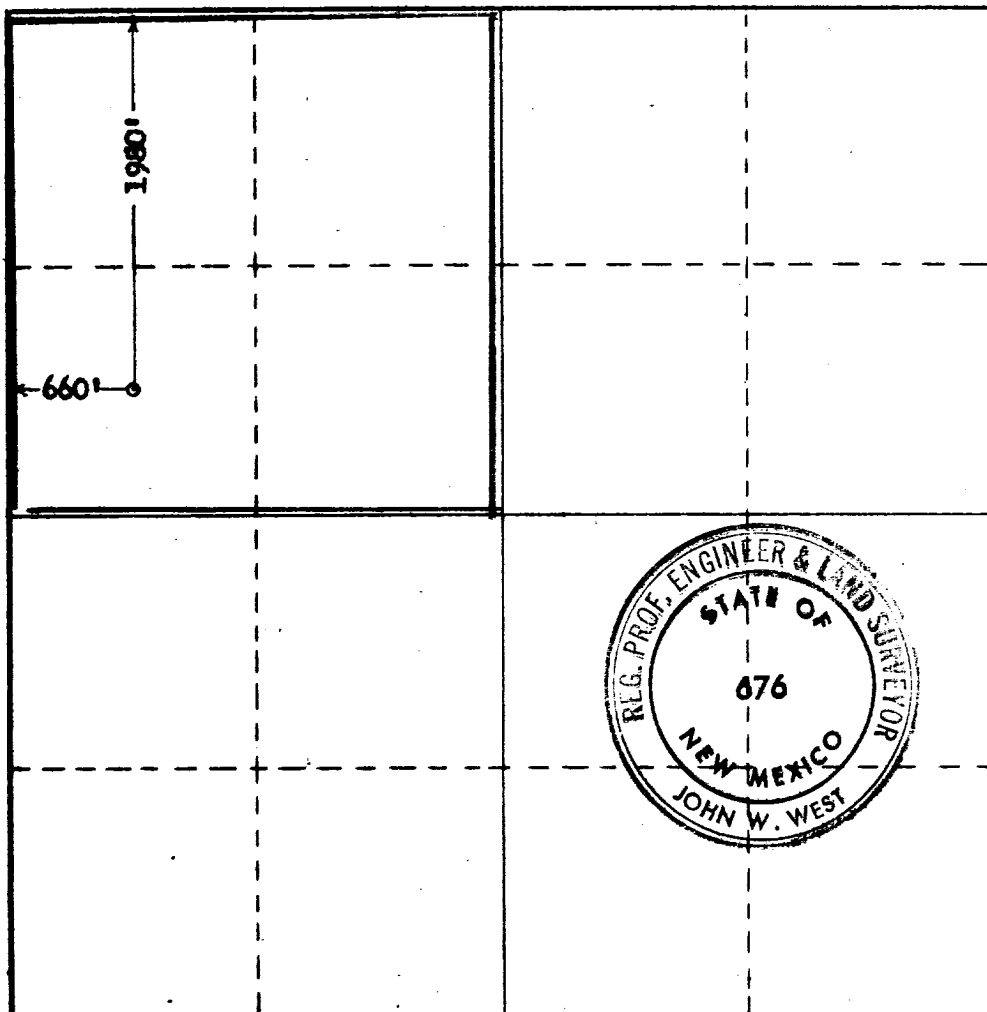
Operator DALPORT OIL COMPANY			Lease Eagle-Federal		Well No. 1
Unit Letter E	Section 30	Township 12 South	Range 31 East	County Chaves	
Actual Footage Location of Well: 1980 feet from the north line and 660 feet from the west line					
Ground Level Elev. 4021	Producing Formation Queen		Pool Undesignated	Dedicated Acreage: 160 Acres	

1. Outline the acreage dedicated to the subject well by colored pencil or hachure marks on the plat below.
2. If more than one lease is dedicated to the well, outline each and identify the ownership thereof (both as to working interest and royalty).
3. If more than one lease of different ownership is dedicated to the well, have the interests of all owners been consolidated by communitization, unitization, force-pooling, etc?

☐ Yes ☐ No If answer is "yes," type of consolidation _____

If answer is "no," list the owners and tract descriptions which have actually been consolidated. (Use reverse side of this form if necessary.) _____

No allowable will be assigned to the well until all interests have been consolidated (by communitization, unitization, forced-pooling, or otherwise) or until a non-standard unit, eliminating such interests, has been approved by the Commission.



CERTIFICATION

I hereby certify that the information contained herein is true and complete to the best of my knowledge and belief.

Name
John W. West
Position
Geologist
Company
Dalport Oil Corp.
Date
February 6, 1973

I hereby certify that the well location shown on this plat was located in the field notes of actual surveys made by me or under my supervision, and that the same is true and correct to the best of my knowledge and belief.
RECEIVED FEB-8-1973
STATE OF NEW MEXICO

Date Surveyed
Feb. 2, 1973
Registered Professional Engineer and/or Land Surveyor

John W. West
Certificate No. **676**

