

UNITED STATES
DEPARTMENT OF THE INTERIOR
GEOLOGICAL SURVEY

APPLICATION FOR PERMIT TO DRILL, DEEPEN, OR PLUG BACK

1a. TYPE OF WORK

DRILL ☒DEEPEN ☐PLUG BACK ☐

b. TYPE OF WELL

OIL
WELL ☐GAS
WELL ☒

OTHER

SINGLE
ZONE ☒MULTIPLE
ZONE ☐

2. NAME OF OPERATOR

McCLELLAN OIL CORPORATION

3. ADDRESS OF OPERATOR

Box 848, ROSWELL, NEW MEXICO 88201

4. LOCATION OF WELL (Report location clearly and in accordance with any State requirements.)*

At surface

At proposed prod. zone

1980 FSL & 660 FEL

14. DISTANCE IN MILES AND DIRECTION FROM NEAREST TOWN OR POST OFFICE*

20 MILES N. LOCO HILLS

15. DISTANCE FROM PROPOSED*

LOCATION TO NEAREST
PROPERTY OR LEASE LINE, FT.
(Also to nearest drlg. unit line, if any)

660'

16. NO. OF ACRES IN LEASE

160

17. NO. OF ACRES ASSIGNED
TO THIS WELL

40

18. DISTANCE FROM PROPOSED LOCATION*
TO NEAREST WELL, DRILLING, COMPLETED,
OR APPLIED FOR, ON THIS LEASE, FT. $\frac{1}{2}$ MILE

19. PROPOSED DEPTH

2300

20. ROTARY OR CABLE TOOLS

CABLE TOOL

21. ELEVATIONS (Show whether DF, RT, GR, etc.)

4012 G. L.

22. APPROX. DATE WORK WILL START*

23.

PROPOSED CASING AND CEMENTING PROGRAM

SIZE OF HOLE	SIZE OF CASING	WEIGHT PER FOOT	SETTING DEPTH	QUANTITY OF CEMENT
10 $\frac{1}{4}$ "	8-5/8	20 LB.	400'	175 SX
8"	4 $\frac{1}{2}$	9.5 LB.	2250'	150 SX

WILL DRILL WITH CABLE TOOL TO TEST QUEEN SAND. IF
PRODUCTION IS INDICATED, WILL ATTEMPT COMPLETION.

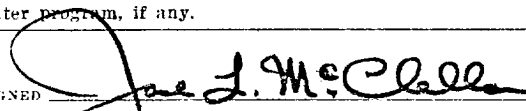
CORTEZ DRILLING COMPANY OF ROSWELL WILL BE THE CONTRACTOR.

RECEIVED
APR 27 1973
U. S. GEOLOGICAL SURVEY
ARTESIA, NEW MEXICO

IN ABOVE SPACE DESCRIBE PROPOSED PROGRAM: If proposal is to deepen or plug back, give data on present productive zone and proposed new productive zone. If proposal is to drill or deepen directionally, give pertinent data on subsurface locations and measured and true vertical depths. Give blowout preventer program, if any.

24.

SIGNED



TITLE

PRESIDENT

DATE

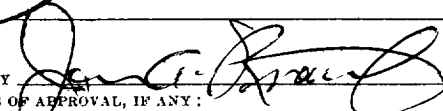
4/26/73

(This space for Federal or State office use)

PERMIT NO.

APPROVAL DATE

APPROVED BY



TITLE

DISTRICT ENGINEER

DATE

MAY 4 1973

CONDITIONS OF APPROVAL, IF ANY:

*See Instructions On Reverse Side

RECEIVED

MAY 7 1973

O. C. C.
ARTESIA, OFFICE

RECEIVED

MAY 7 1973

O. C. C.
ARTESIA, OFFICE

**NEW MEXICO OIL CONSERVATION COMMISSION
WELL LOCATION AND ACREAGE DEDICATION PLAT**

Form C-102
Supersedes C-128
Effective 1-1-65

All distances must be from the outer boundaries of the Section

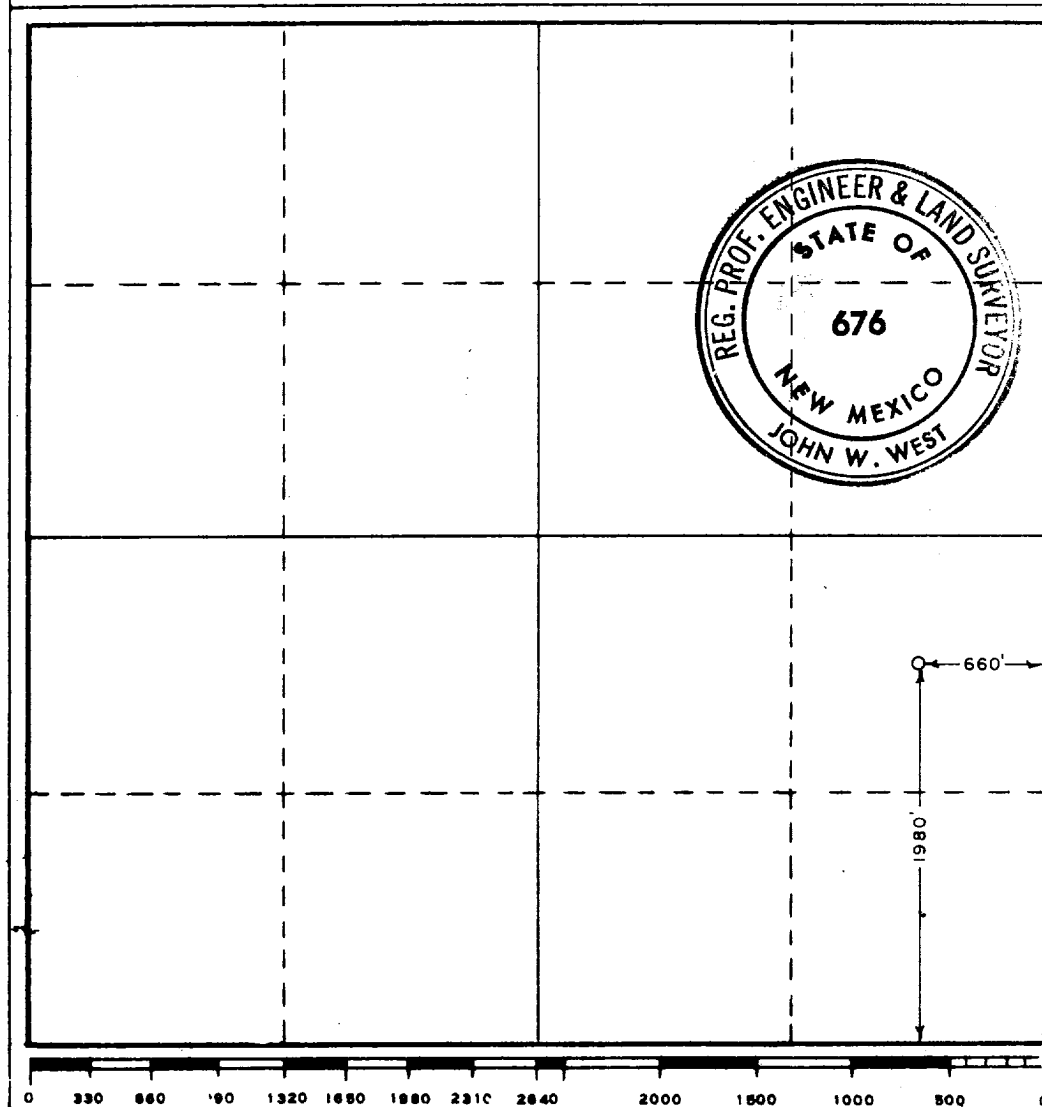
Operator MCCLELLAN OIL CORP.			Lease FEDERAL 8		Well No. 1
Unit Letter 1	Section 8	Township 15 SOUTH	Range 30 EAST	County CHAVES	
Actual Footage Location of Well: 1980 feet from the SOUTH line and 660 feet from the EAST line					
Ground Level Elev. 4012.2	Producing Formation QUEEN SAND		Pool WILDCAT	Dedicated Acreage: 40 Acres	

1. Outline the acreage dedicated to the subject well by colored pencil or hatchure marks on the plat below.
2. If more than one lease is dedicated to the well, outline each and identify the ownership thereof (both as to working interest and royalty).
3. If more than one lease of different ownership is dedicated to the well, have the interests of all owners been consolidated by communitization, unitization, force-pooling, etc?

☐ Yes ☐ No If answer is "yes," type of consolidation _____

If answer is "no," list the owners and tract descriptions which have actually been consolidated. (Use reverse side of this form if necessary.) _____

No allowable will be assigned to the well until all interests have been consolidated (by communitization, unitization, forced-pooling, or otherwise) or until a non-standard unit, eliminating such interests, has been approved by the Commission.



CERTIFICATION

I hereby certify that the information contained herein is true and complete to the best of my knowledge and belief.

Name
JACK L. MCCLELLAN

Position
PRESIDENT

Company
MCCLELLAN OIL CORP.

Date
APRIL 26, 1973

I hereby certify that the well location shown on this plat was plotted from notes of actual survey made by me or under my supervision and to the best of my knowledge and belief is true and correct.

Date Surveyed
APRIL 11, 1973

Registered Professional Engineer and/or Land Surveyor

John W. West

Certificate No. **676**

RECEIVED

APR 11 1973

O. C. C.
ARTCLIA. OFFICE

02-00

10

JMC

M LELLAN OIL CORPORATION
Box 849
ROSWELL, NEW MEXICO 88201

