

**NEW MEXICO OIL CONSERVATION COMMISSION
WELL LOCATION AND ACREAGE DEDICATION PLAT**

Form C-102
Supersedes C-128
Effective 1-1-65

All distances must be from the outer boundaries of the Section

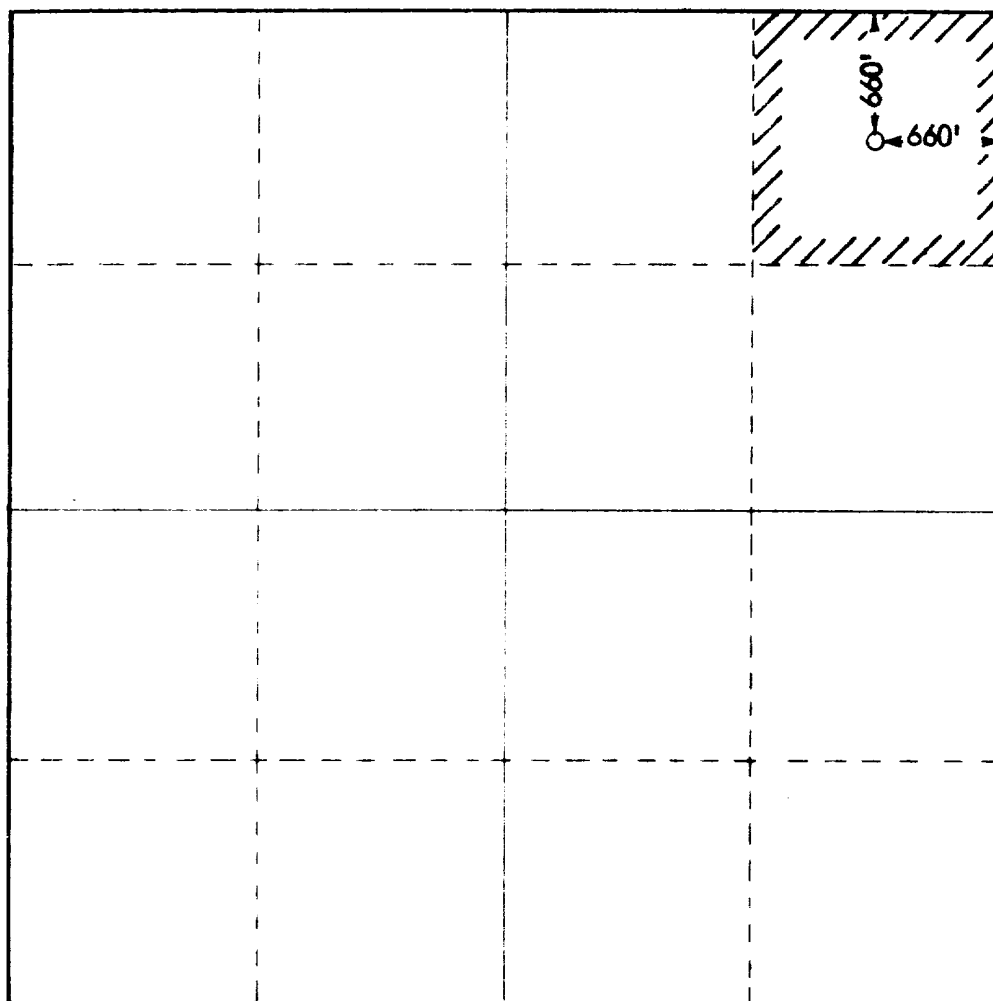
Operator McClellan Oil Corp.			Lease Federal 17		Well No. 1
Unit Letter A	Section 17	Township 15 South	Range 30 East	County Chaves	
Actual Footage Location of Well: 660 feet from the North line and 660 feet from the East line					
Ground Level Elev.	Producing Formation Queen Sand		Pool Wildcat	Dedicated Acreage: 40 Acres	

1. Outline the acreage dedicated to the subject well by colored pencil or hachure marks on the plat below.
2. If more than one lease is dedicated to the well, outline each and identify the ownership thereof (both as to working interest and royalty).
3. If more than one lease of different ownership is dedicated to the well, have the interests of all owners been consolidated by communitization, unitization, force-pooling, etc?

☐ Yes ☐ No If answer is "yes," type of consolidation _____

If answer is "no," list the owners and tract descriptions which have actually been consolidated. (Use reverse side of this form if necessary.) _____

No allowable will be assigned to the well until all interests have been consolidated (by communitization, unitization, forced-pooling, or otherwise) or until a non-standard unit, eliminating such interests, has been approved by the Commission.



CERTIFICATION

I hereby certify that the information contained herein is true and complete to the best of my knowledge and belief

Name John W. West
Position Agent

Company McClellan Oil Corp.

Date Sept. 13, 1974

RECEIVED
I hereby certify that the well location shown on this plat is correct from field notes of actual surveys made by me or under my supervision and that the same are correct to the best of my knowledge.

**U.S. GEOLOGICAL SURVEY
ARTESIA, NEW MEXICO**

Date Survey Sept. 13, 1974
Registered Professional Engineer
No. 676
JOHN W. WEST

0 330 660 990 1320 1650 1980 2310 2640 2000 1500 1000 500

ME

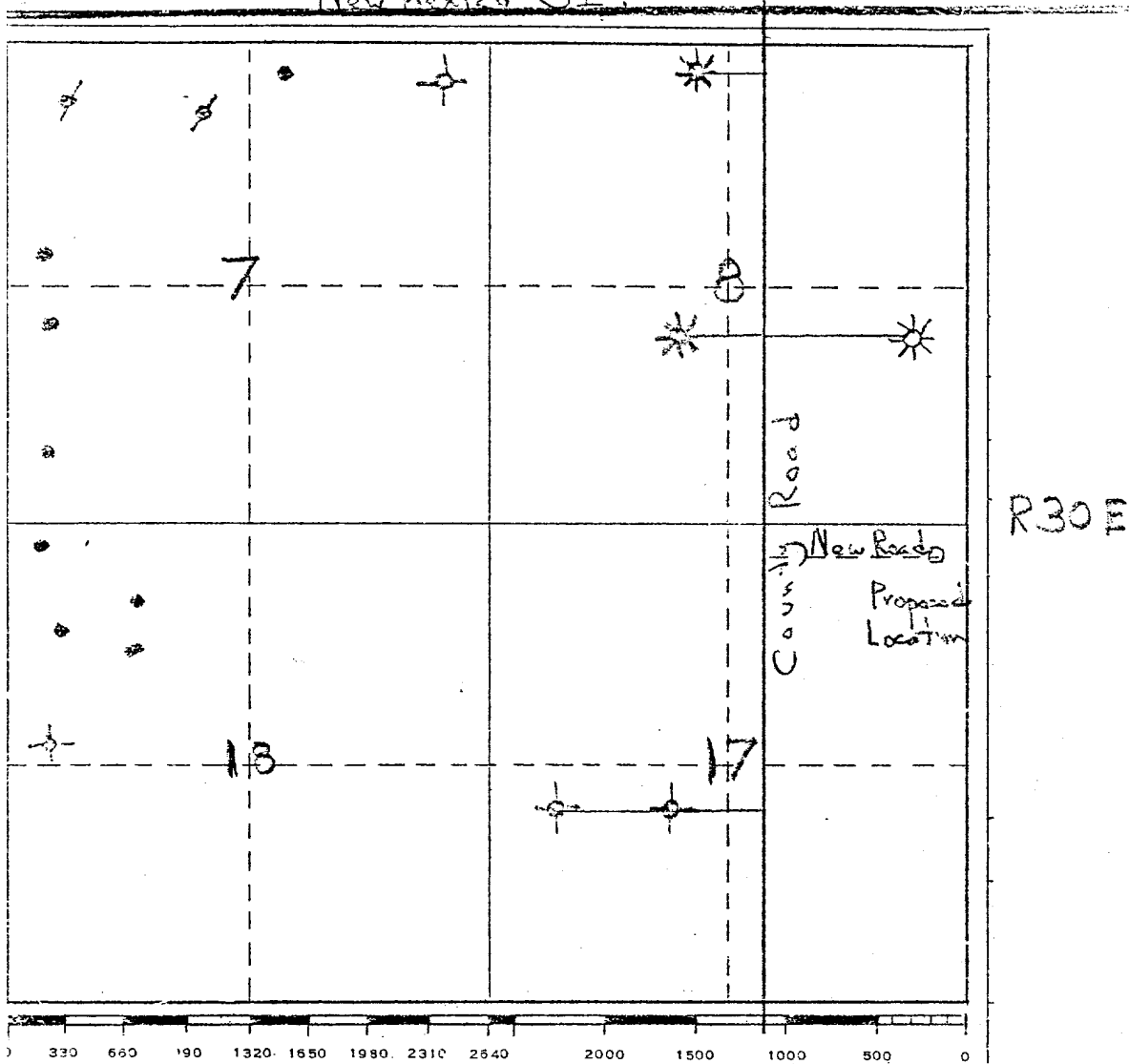
McLELLAN OIL CORPORATION

Box 848

ROSWELL, NEW MEXICO 88201

Federal "17" No. 1

New Mexico 31



T153

Propose to use existing roads, county and oil field, and to construct approximately 750' of new road to the location. No water exists in this area and will have to be trucked in to location. Combustible material will be burned, noncombustible material will be buried with pit filling.

After completion or abandonment, the pit will be filled, the location cleaned, and the area restored, as much as possible, to its original state.

