

UNITED STATES
DEPARTMENT OF THE INTERIOR
GEOLOGICAL SURVEY

30-1-7-2 451
B. LEASE DESIGNATION AND SERIAL NO.

IN-0298474

APPLICATION FOR PERMIT TO DRILL, DEEPEN, OR PLUG BACK

1. TYPE OF WORK
DRILL ☒ DEEPEN ☐ PLUG BACK ☐

2. TYPE OF WELL
OIL WELL ☒ GAS WELL ☐ OTHER ☐ SINGLE ZONE ☒ MULTIPLE ZONE ☐

3. NAME OF OPERATOR
Hanagan Petroleum Corporation

4. ADDRESS OF OPERATOR
P. O. Box 1737, Roswell, New Mexico 88201

5. LOCATION OF WELL (Report location clearly and in accordance with any State requirements.)*
At surface 2010' FNL & 660' FEL
At proposed prod. zone Same

6. IF INDIAN, ALLOTTEE OR TRIBE NAME

7. UNIT AGREEMENT NAME

8. FARM OR LEASE NAME
Link

9. WELL NO.
1

10. FIELD AND POOL, OR WILDCAT
Wildcat

11. SEC., T., R., M., OR BLK. AND SURVEY OR AREA
20-13S-30E

12. COUNTY OR PARISH
Chaves

13. STATE
N.M.

14. DISTANCE IN MILES AND DIRECTION FROM NEAREST TOWN OR POST OFFICE*
24 miles east Hagerman, New Mexico

15. DISTANCE FROM PROPOSED* LOCATION TO NEAREST PROPERTY OR LEASE LINE, FT. (Also to nearest drlg. unit line, if any)
660'

16. NO. OF ACRES IN LEASE
1600

17. NO. OF ACRES ASSIGNED TO THIS WELL
40

18. DISTANCE FROM PROPOSED LOCATION* TO NEAREST WELL, DRILLING, COMPLETED, OR APPLIED FOR, ON THIS LEASE, FT.
SW 1/4 Sec. 28 P&A 2250'

19. PROPOSED DEPTH
2250'

20. ROTARY OR CABLE TOOLS
Cable-Tools

21. ELEVATIONS (Show whether DF, RT, GR, etc.)
3887' GR

22. APPROX. DATE WORK WILL START*
7/15/74

PROPOSED CASING AND CEMENTING PROGRAM

SIZE OF HOLE	SIZE OF CASING	WEIGHT PER FOOT	SETTING DEPTH	QUANTITY OF CEMENT
15-1/2"	12-3/4"	30	350'	Mud-in
10-3/4"	8-5/8"	24 & 32	600'	Cmt. circ. if necessary to run
8"	4-1/2"	9.5	2250	250

Plan drill w/cable tools (Abbott Bros.), start out w/15 1/2" hole to 350', run & mud-in 12-3/4" csg., drill 10-3/4" hole to 600' and if have water in hole, pull 12-3/4" and run 8-5/8" csg. to 600' and circulate cement. If no appreciable water in hole @ 600', reduce to 8" hole and drill total depth.

RECEIVED

JUL 12 1974

U. S. GEOLOGICAL SURVEY
ARTESIA, NEW MEXICO

IN ABOVE SPACE DESCRIBE PROPOSED PROGRAM: If proposal is to deepen or plug back, give data on present productive zone and proposed new productive zone. If proposal is to drill or deepen directionally, give pertinent data on subsurface locations and measured and true vertical depths. Give blowout prevention program, if any.

24. SIGNED Hugh C. Hanagan TITLE Vice President DATE 7/10/74
(This space for Federal or State office use)

PERMIT NO. _____ APPROVAL DATE _____

APPROVED BY [Signature] TITLE _____ DATE _____

CONDITIONS OF APPROVAL, IF ANY:

JUL 10 1974
R. L. BECKWITH
ACTING DISTRICT ENGINEER

THIS APPROVAL IS RESCINDED IF OPERATIONS
ARE NOT COMMENCED WITHIN 3 MONTHS.
EXPIRES OCT 23 1974 See Instructions On Reverse Side

NEW MEXICO OIL CONSERVATION COMMISSION
WELL LOCATION AND ACREAGE DEDICATION PLAT

Form O-100
Supersedes O-128
Effective 1-1-65

All distances must be from the outer boundaries of the Section

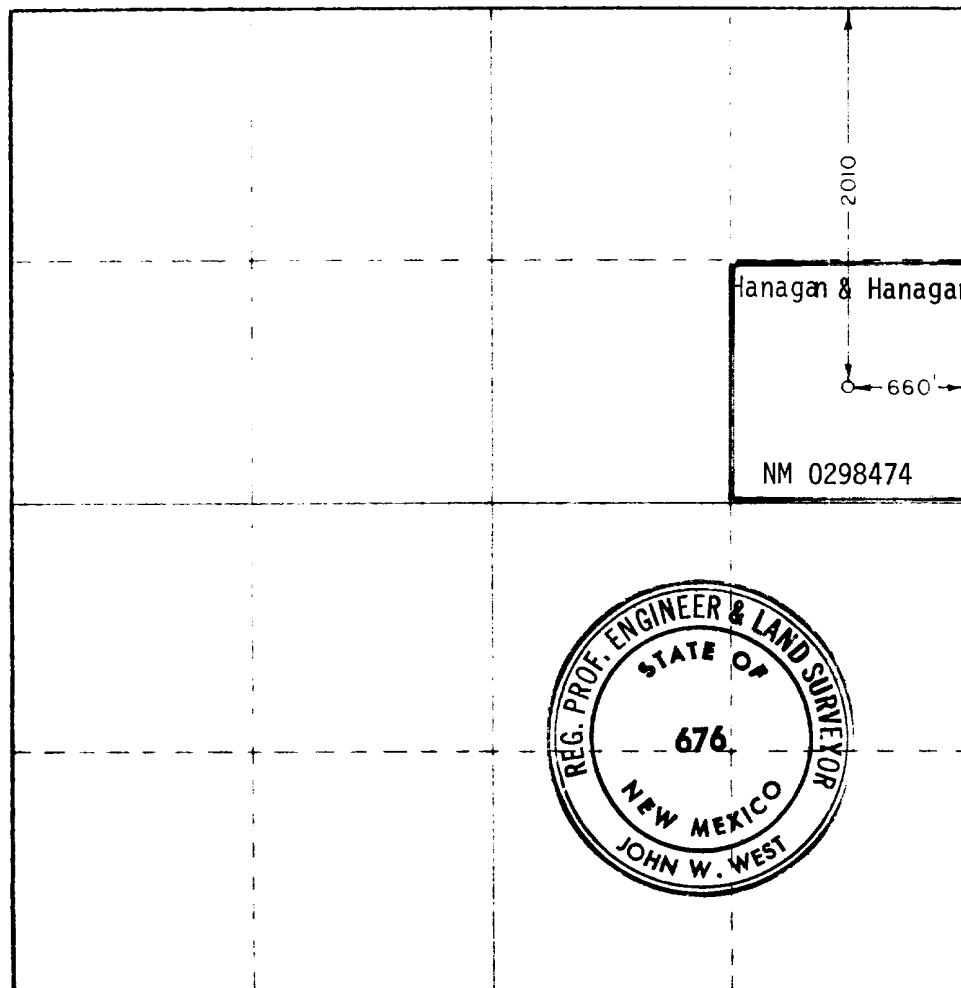
Lessee Hanagan Petroleum Corporation			Link Link		Well No. 1
Tract Letter H	Section 20	Township 13 South	Range 30 East	County Chaves	
Approximate Location of Well					
2010 feet from the North line and		660 feet from the East line			
Ground Level Elev. 3887.5	Producing Formation Queen	Foot Wildcat	Estimated Acreage 40 Acres		

1. Outline the acreage dedicated to the subject well by colored pencil or hatchure marks on the plat below.
2. If more than one lease is dedicated to the well, outline each and identify the ownership thereof (both as to working interest and royalty).
3. If more than one lease of different ownership is dedicated to the well, have the interests of all owners been consolidated by communitization, unitization, force-pooling, etc?

☐ Yes ☐ No If answer is "yes" type of consolidation _____

If answer is "no" list the owners and tract descriptions which have actually been consolidated. (Use reverse side of this form if necessary.) _____

No allowable will be assigned to the well until all interests have been consolidated (by communitization, unitization, force-pooling, or otherwise) or until a non-standard unit, eliminating such interests, has been approved by the Commission.



CERTIFICATION

I hereby certify that the information contained herein is true and complete to the best of my knowledge and belief.

Hugh E. Hanagan
Signature

Hugh E. Hanagan
Position

Vice President
Company

Hanagan Petroleum Corporation
Name

7/10/74
Date

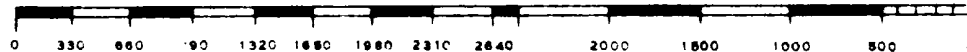
I hereby certify that the well location shown on this plat is based on field notes of actual surveys made by me or under my supervision and that the same is true and correct to the best of my knowledge.
RECEIVED
JUL 15 1974
U.S. GEOLOGICAL SURVEY
ARTESIA, NEW MEXICO

Date Surveyed

July 9, 1974

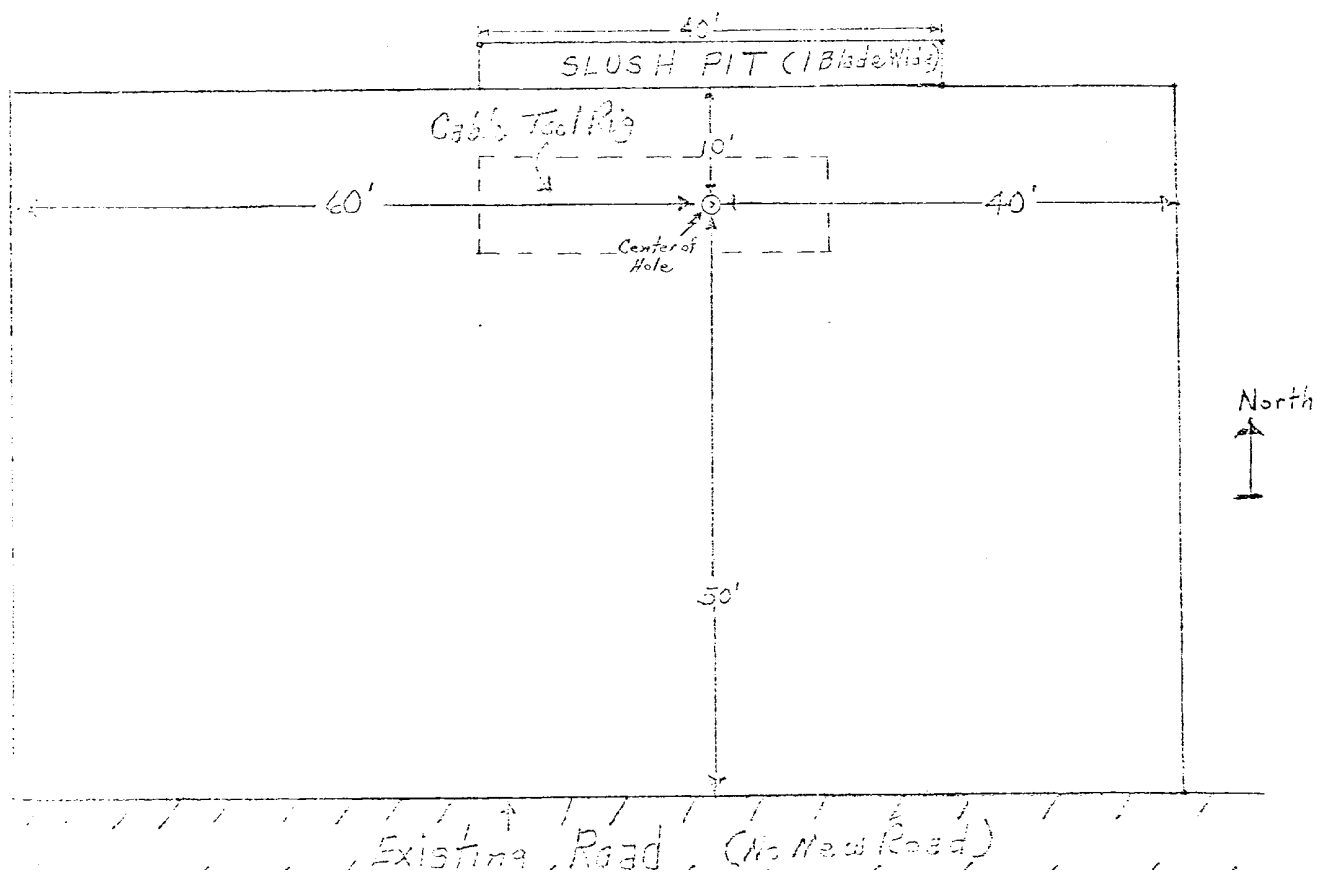
Registered Professional Engineer and/or Land Surveyor

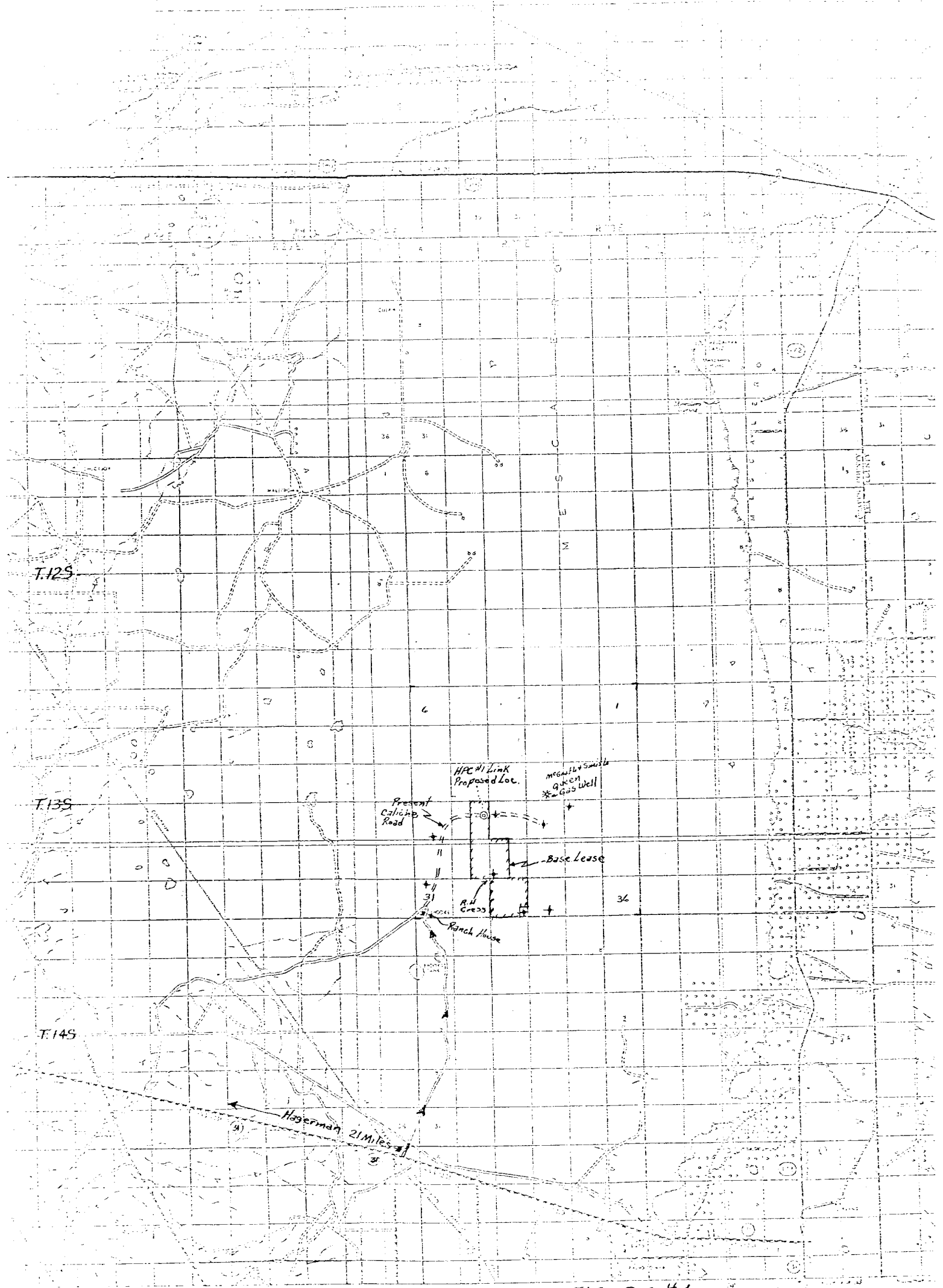
John W. West
Certificate No. **676**



DEVELOPMENT PLAN FOR SURFACE USE

1. Existing Roads - See attached Figures #1 & 2
2. Planned Access Roads - None
3. Location of Existing Roads - See Figure #1
4. Lateral Roads to Location - See Figure #1
5. Location of Tank Batteries & Flow Lines - In case production, run flow lines due east approx. 100' to heater/treater, then due south to north side of road to battery (approx. 50').
6. Water Supply - Will haul water needed.
7. Method Handling Waste - Dispose in pit, should be very little.
8. Location of Camp - None
9. Location of Airstrip - None
10. Location of Layout (Position of rig, mud tanks, reserve & burn pits, pipe racks, etc.) - See Figure #2, pad has to be caliched.
11. Topography, Vegetation, Etc. - Fairly flat country with some large sand dunes, location very sandy, area covered with mesquite bushes.
12. Plans Restoration of Surface - Fill in pit, level location & pits, clean up area.
13. Company Representative Responsible for Compliance to Development Plan - Hugh E. Hanagan, Roswell, New Mexico 88201, Phone 505/623-5053





R.22E. R.23E. R.24E. R.25E. **FIGURE #1**
 HAGERMAN QUADRANGLE
 91
 Hagerman Petroleum Corporation
 No. 1 Link - 2250 Queen C.T. Test